

PUBLIC LAND SURVEY MONUMENT RECORD

TYPE OF MONUMENT: HARRISON
 ADAMS COUNTY COORDINATES, NAD 83 (2007)

N. 154181.298

E. 547053.303

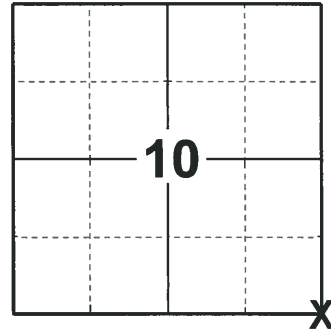
ELEVATION- - - - - DATUM - - - - -

FIELD WORK DATE: 06/18/2018

BASIS FOR MONUMENT LOCATION

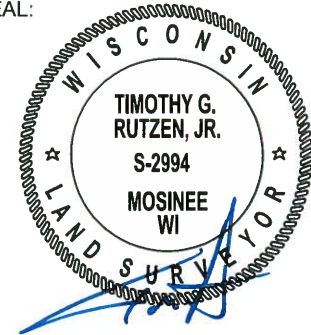
1973 - PLS 878 EXCAVATED WITH A BACKHOE AND FOUND A 5"x7"x16" SQUARE CUT SANDSTONE. SET A HARRISON MONUMENT THE SAME AND TIED OUT.

2018 - PLS 2994 FOUND A HARRISON MONUMENT 6" BELOW THE ROAD SURFACE AND 1 TIE. THE MONUMENT AGREES WITH THE EXISTING TIE. ACCEPTED THE HARRISON MONUMENT AS THE CORNER LOCATION. SET 3 NEW TIES AND MEASURED TO THE TIES.



LOCATION
 (INDICATE CORNER BY "X")

SEAL:



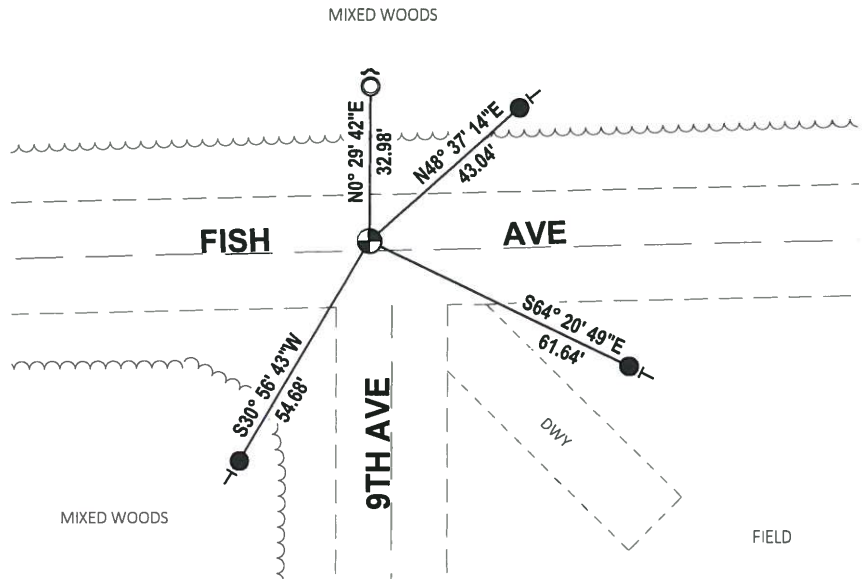
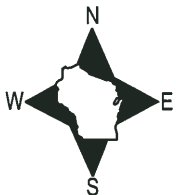
DATA SHOWN HERE ON THIS TIE SHEET IS CORRECT AND COMPLETE TO THE BEST OF MY KNOWLEDGE AND BELIEF.

PROFESSIONAL LAND SURVEYOR

DATE 7-18-18

- TIE SKETCH

NOTE: THE CORNER FALLS 2± NORTH OF THE CENTERLINE OF FISH AVE AND 5± WEST OF THE CENTERLINE OF 9TH AVE.



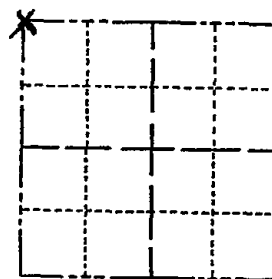
- SET 3/4" x 18" IRON REBAR, 1.50#/FT
- FOUND 1-1/4" O.D. IRON PIPE
- ⊗ FOUND HARRISON MONUMENT
- ↗ STEEL FENCE POST
- ↖ VINYL "T" POST

ADAMS COUNTY

Survey Monument Record

TYPE OF MONUMENT: Harrison standard
 STATE PLANE COORDINATES: N _____
 E _____
 ELEVATION — M.S.L. DATUM: _____
 THETA ANGLE: _____
 FIELD BOOK: 107 PAGE 49

CORNER NO. 230
 SECTION 14
 TOWN 15
 RANGE 6



LOCATION
 (Indicated by 'X')

SEAL:



BASIS FOR MONUMENT LOCATION

(Use reverse side if necessary)

Show info such as: History of corner, with reference to Vol. and pg, dates, surveyor; exact description of monument replaced; if location computed, by taped or EDM traverse; landowner remarks, etc.

Excavated with backhoe. Found
 5" x 7" x 16" square cut sandstone.
 Monumented same.

CORNER O.K. 8-6-76 SK-SS

MAINTENANCE RECORD

Date	Init.	Remarks
12-30-81	SK-RW	Corner O.K.
1-21-86	GL-SS	OK
1-14-91	KZ-JG	ALT OK
11-22-95	SS	OK
1-29-01	JG-MH	OK
3-07-06	JS-SS	1 NEW TIE
01-13-11	SS	" "

CERTIFIED CORRECT:

Anthony B. Kiedrowski
 Registered Land Surveyor

DATE: 2-22-73

TIE SKETCH

(Show at least four ties)

