

PUBLIC LAND SURVEY MONUMENT RECORD

TYPE OF MONUMENT: HARRISON
 ADAMS COUNTY COORDINATES, NAD 83 (2007)

N. 154187.948

E. 549687.743

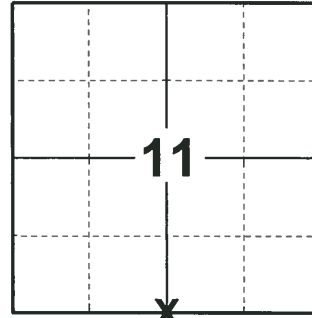
ELEVATION- DATUM

FIELD WORK DATE: 06/18/2018

BASIS FOR MONUMENT LOCATION

1972 - PLS 878 THIS POINT WAS DETERMINED BY ANALYZING A TRAVERSE OF THE ENTIRE SECTION. THE DETERMINED POINT IS NOT ON A STRAIGHT LINE BETWEEN CORNERS. DID NOT EXCAVATE. SET HARRISON AND TIED OUT.

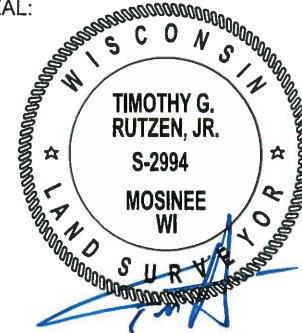
2018 - PLS 2994 FOUND A HARRISON MONUMENT 6" BELOW THE ROAD SURFACE. FOUND NO EVIDENCE OF ANY OF THE EXISTING TIES OR WITNESSES. ACCEPTED THE HARRISON MONUMENT AS THE BEST EVIDENCE OF THE CORNER LOCATION. SET 4 NEW TIES AND MEASURED TO THE TIES.



LOCATION

(INDICATE CORNER BY "X")

SEAL:



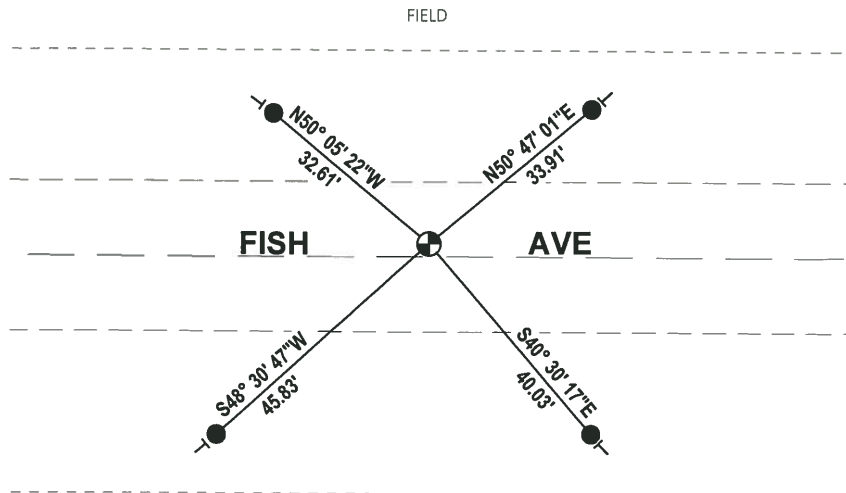
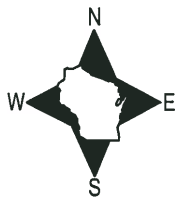
DATA SHOWN HERE ON THIS TIE SHEET IS CORRECT AND COMPLETE TO THE BEST OF MY KNOWLEDGE AND BELIEF.

PROFESSIONAL LAND SURVEYOR

DATE 7-18-18

- TIE SKETCH

NOTE: THE CORNER FALLS 2± NORTH OF THE CENTERLINE OF FISH AVE.



- SET 3/4" x 18" IRON REBAR, 1.50#/FT
- ⊕ FOUND HARRISON MONUMENT
- VINYL "T" POST

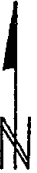
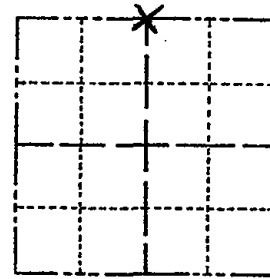
FIELD

ADAMS COUNTY

Survey Monument Record

TYPE OF MONUMENT: 30" HARRISON
 STATE PLANE COORDINATES: N _____
 E _____
 ELEVATION — M.S.L. DATUM: _____
 THETA ANGLE: _____
 FIELD BOOK: 107 PAGE 69

CORNER NO. 239
 SECTION 14
 TOWN 15
 RANGE 6



LOCATION
 (Indicated by 'X')

SEAL:

BASIS FOR MONUMENT LOCATION

(Use reverse side if necessary)

Show info such as: History of corner, with reference to Vol. and pg, dates, surveyor; exact description of monument replaced; if location computed, by taped or EDM traverse; landowner remarks, etc.

This point determined by analyzing a traverse of the entire section. Point is not on a straight line between corners.

did not excavate.

CORNER O.K. 8-6-76 SK-SS
 1-21-86 GR-SS

SEE SECTION Summary 1-14-91 - JG-KZ
 " " " 11-22-95 SS
 " " " 2-12-01 SG-MH
 " " Mon OK 3-07-06 JS-SS
 " " " 01-13-11 SS



CERTIFIED CORRECT:

Anthony B. Kiedrowski
 Registered Land Surveyor

DATE: 12/14/72

TIE SKETCH

(Show at least four ties)

1-21-86- ALL TIES GONE
 MON GOOD. SEE SECTION
 SUMMARY FOR ADJACENT CORNERS
 G.R.

