

12 SECTION 15 TOWN 06 RANGE

# ADAMS COUNTY

COUNTY CORNER NO: 53  
 ROMPORTOL ID: 41506120000

## PUBLIC LAND SURVEY MONUMENT RECORD

TYPE OF MONUMENT: HARRISON  
 ADAMS COUNTY COORDINATES, NAD 83 (2007)

N. 154042.815  
 E. 557726.555

ELEVATION-      DATUM     

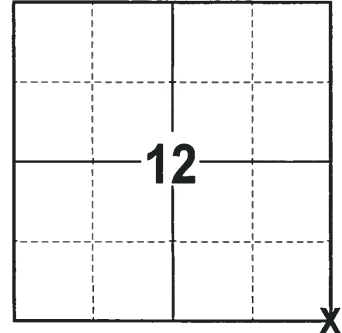
FIELD WORK DATE: 09/19/2017

### BASIS FOR MONUMENT LOCATION

1972 - PLS 981 SET THE TOP - PART OF A 30" HARRISON MONUMENT ON TOP OF BEDROCK AND TIED OUT.

1999 - PLS 2281 HARRISON MONUMENT RE-SET AFTER COMPLETION OF THE COUNTY HIGHWAY B RECONSTRUCTION PROJECT. LOCATION IS BASED ON THE EXISTING MONUMENT FOUND BEFORE CONSTRUCTION BEGAN. CORNER WAS RE-TIED.

2017 - PLS 2994 FOUND A HARRISON MONUMENT 6" BELOW THE ROAD SURFACE AND 2 TIES. THE MONUMENT AGREES WITH THE EXISTING TIES. ACCEPTED THE HARRISON MONUMENT AS THE CORNER LOCATION, SET 2 NEW TIES AND RE-MEASURED TO THE TIES.



**LOCATION**  
 (INDICATE CORNER BY "X")

SEAL:



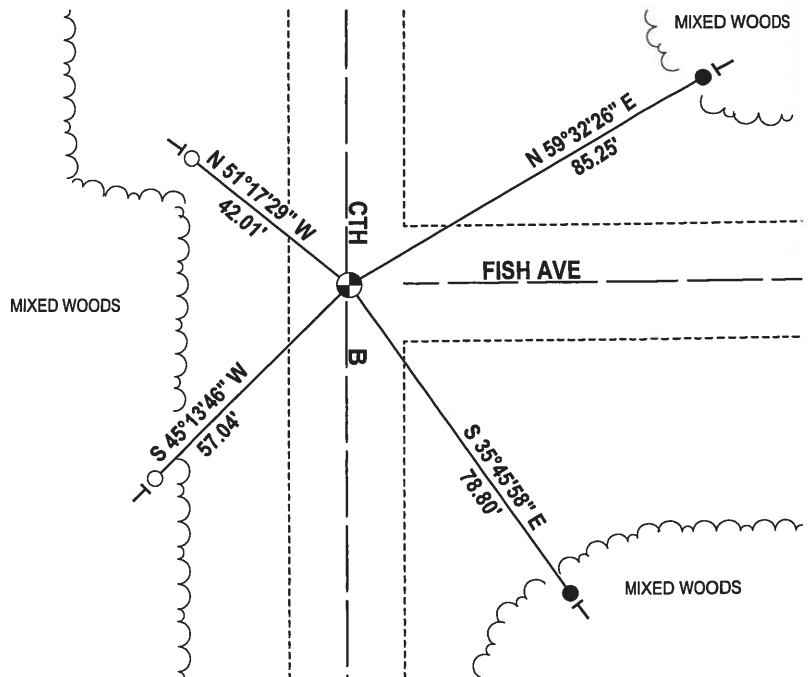
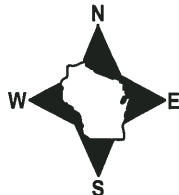
DATA SHOWN HERE ON THIS TIE SHEET IS CORRECT AND COMPLETE TO THE BEST OF MY KNOWLEDGE AND BELIEF.

PROFESSIONAL LAND SURVEYOR

DATE 11-15-17

### - TIE SKETCH -

NOTE: THE CORNER FALLS 0.5'± EAST OF THE CENTERLINE OF CTH B.



- 3/4" x 18" IRON REBAR SET, 1.50#/FT
- 1-1/4" O.D. IRON PIPE FOUND
- ⊙ HARRISON FOUND
- ⊣ VINYL "T" POST

# ADAMS COUNTY

## Survey Monument Record

TYPE OF MONUMENT: set top part of 30" Harrison

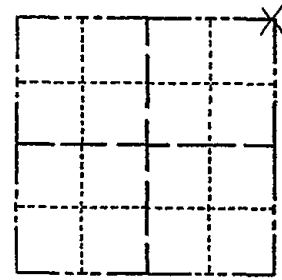
STATE PLANE COORDINATES: N \_\_\_\_\_  
E \_\_\_\_\_

ELEVATION — M.S.L. DATUM: \_\_\_\_\_

THETA ANGLE: \_\_\_\_\_

FIELD BOOK: 103 PAGE 135

CORNER NO. 135  
SECTION 13  
TOWN 15  
RANGE 6



LOCATION  
(Indicated by 'X')

SEAL: \_\_\_\_\_

### BASIS FOR MONUMENT LOCATION

(Use reverse side if necessary)

Show info such as: History of corner, with reference to Vol. and pg, dates, surveyor; exact description of monument replaced; if location computed, by taped or EDM traverse; landowner remarks, etc.

Set top-part of a 30" Harrison monument on top of bedrock on May 17, 1972 by Sam T. Mullen R.L.S. 981

*CORNER O.K. 4-23-76 RN-SS*

### MAINTENANCE RECORD

Date	Init.	Remarks
12-30-81	SK-RW	Corner O.K.
1-16-86	GR-SS	" "
1-14-91	KZ-JG	Alt OK
12-18-90	KC	SEE ATTACHED PAGE
11-22-95	SS	" " "
SEE ATTACHED SHEET GROHOLSKI 12/21/99		
2-6-01	JG	SEE ATTACHED SHEETS
3-13-04	JR-SS	" "
12-21-11	ML	" "

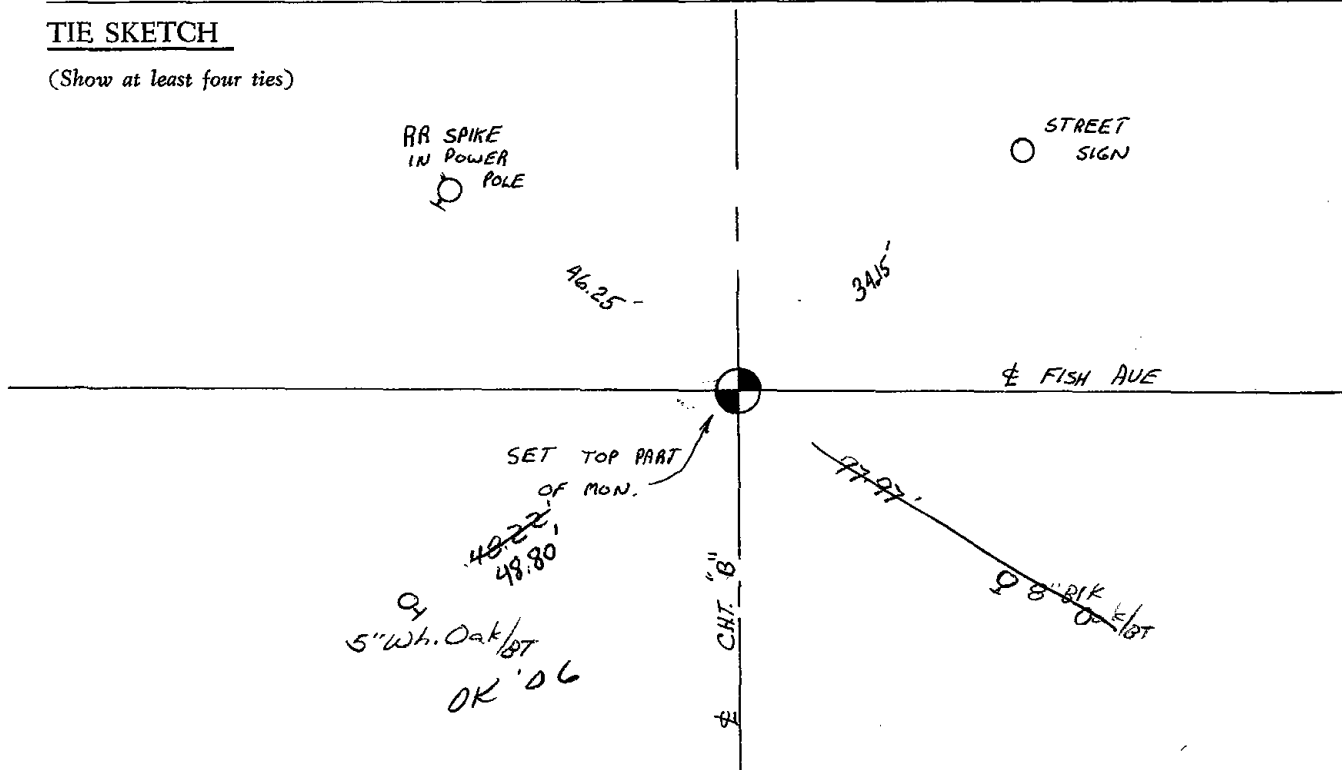
CERTIFIED CORRECT:

Registered Land Surveyor

DATE: \_\_\_\_\_

### TIE SKETCH

(Show at least four ties)

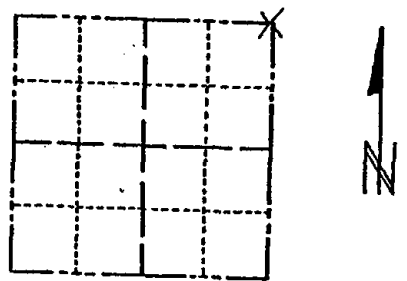


DAMS COUNTY

CORNER NO. 135  
SECTION 13  
TOWN 15  
RANGE 6

Survey Monument Record

TYPE OF MONUMENT: set top part of 30" Harrison  
STATE PLANE COORDINATES: N \_\_\_\_\_  
E \_\_\_\_\_  
ELEVATION — M.S.L. DATUM: \_\_\_\_\_  
THETA ANGLE: \_\_\_\_\_  
FIELD BOOK: 103 PAGE 135



LOCATION  
(Indicated by 'X')

BASIS FOR MONUMENT LOCATION

(Use reverse side if necessary)

Show info such as: History of corner, with reference to Vol. and pg, dates, surveyor; exact description of monument replaced; if location computed, by taped or EDM traverse; landowner remarks, etc.

SEAL:

Set top-part of a 30" Harrison monument on top of bedrock on May 17, 1972 by Sam T. Mullen R.L.S. 981

CORNER O.K. 423.76 PV SS

MAINTENANCE RECORD

Date	Init.	Remarks
12-30-81	SK-RW	Corner O.K.
1-16-86	GR-SS	" "

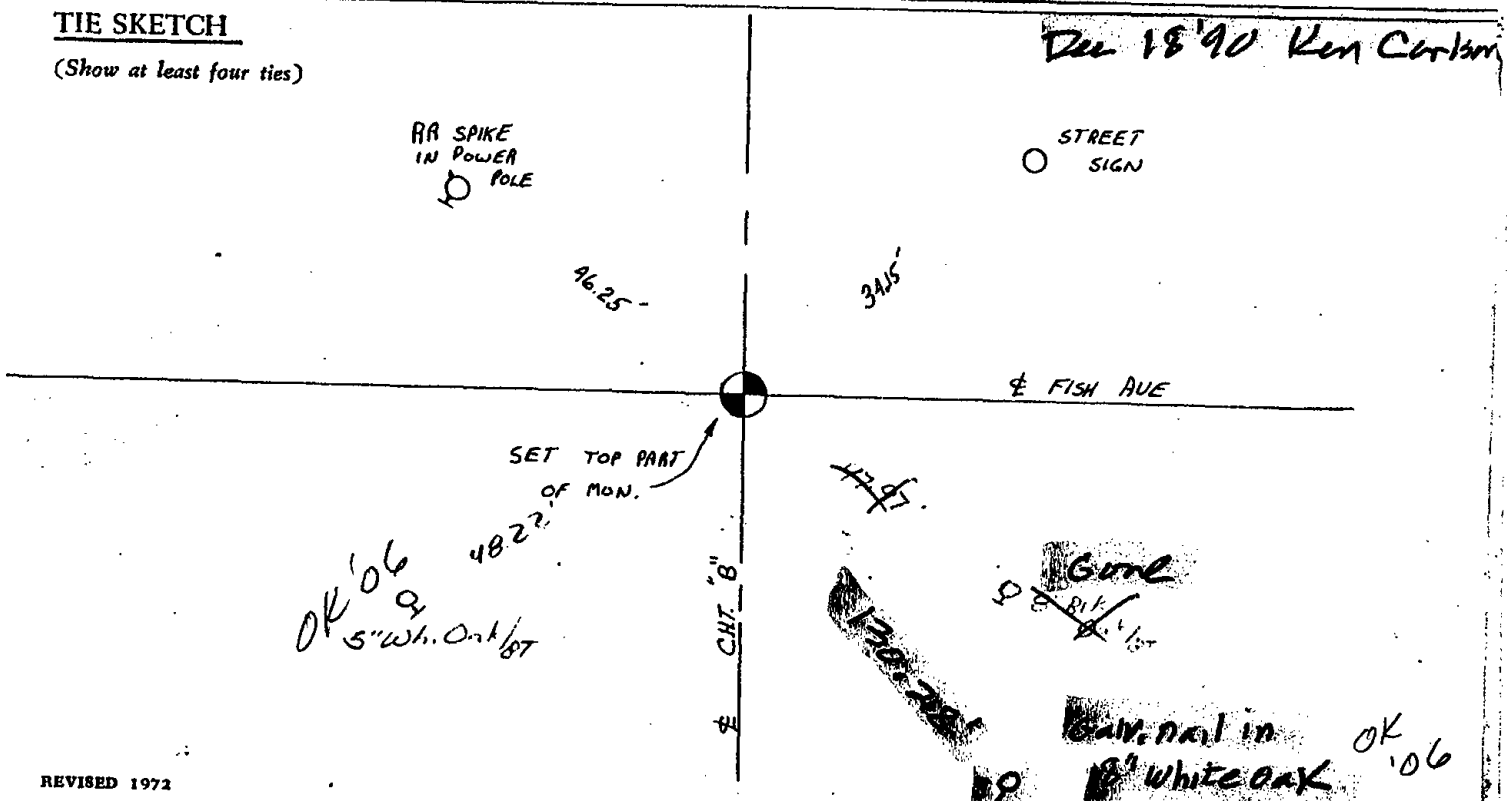
CERTIFIED CORRECT:

Registered Land Surveyor

DATE: \_\_\_\_\_

TIE SKETCH

(Show at least four ties)



Dec 18 '90 Ken Carlson

RR SPIKE  
IN POWER  
POLE

STREET  
SIGN

46.25'

34.5'

SET TOP PART  
OF MON.

OK '06  
5" wh. Oak / BT

6" wh. Oak  
OK '06

6" wh. Oak  
OK '06

