

PUBLIC LAND SURVEY MONUMENT RECORD

TYPE OF MONUMENT: HARRISON
 ADAMS COUNTY COORDINATES, NAD 83 (2007)

N. 151396.982

E. 536565.347

ELEVATION- DATUM

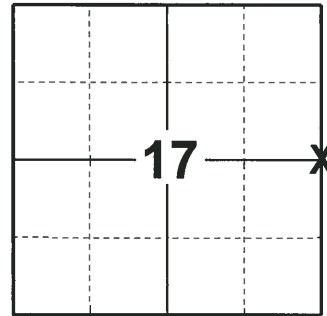
FIELD WORK DATE: 06/27/2018

BASIS FOR MONUMENT LOCATION

1976 - PLS 1103 RAN EDM/TRANSIT TRAVERSE AROUND SECTIONS 9 AND 16 TO DETERMINE SEARCH AREAS. EXCAVATION WITH A BACKHOE YIELDED NO EVIDENCE OF THE ORIGINAL CORNER OR ANY REMONUMENTATION. ESTABLISHED THE CORNER POSITION BY DOUBLING OVER DISTANCE BETWEEN THE NORTHWEST AND SOUTHWEST CORNERS OF THE NW1/4 OF SECTION 16 AND PLACING THE CORNER ON LINE BETWEEN THE SOUTHWEST AND NORTHWEST CORNERS OF SECTION 16. SET A HARRISON MONUMENT AND TIED OUT.

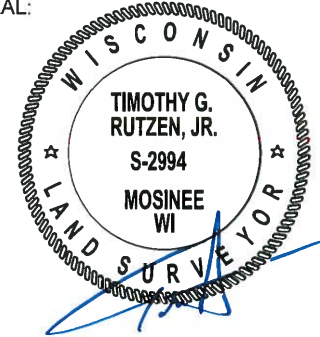
2002 - PLS 2528 FOUND THE MONUMENT INTACT. NONE OF THE TIES REMAINED, THE POWER LINE SHOWN ON HAGEN'S TIE SHEET WAS REMOVED. SET AND MEASURED TO FOUR NEW TIES.

2018 - PLS 2994 FOUND A HARRISON MONUMENT 12" BELOW THE ROAD SURFACE, 6 TIES AND 1 WITNESS. THE MONUMENT AGREES WITH THE EXISTING TIES AND WITNESS. ACCEPTED THE HARRISON MONUMENT AS THE CORNER LOCATION AND RE-MEASURED TO THE EXISTING TIES AND WITNESS.



LOCATION
 (INDICATE CORNER BY "X")

SEAL:



DATA SHOWN HERE ON THIS TIE SHEET IS CORRECT AND COMPLETE TO THE BEST OF MY KNOWLEDGE AND BELIEF.

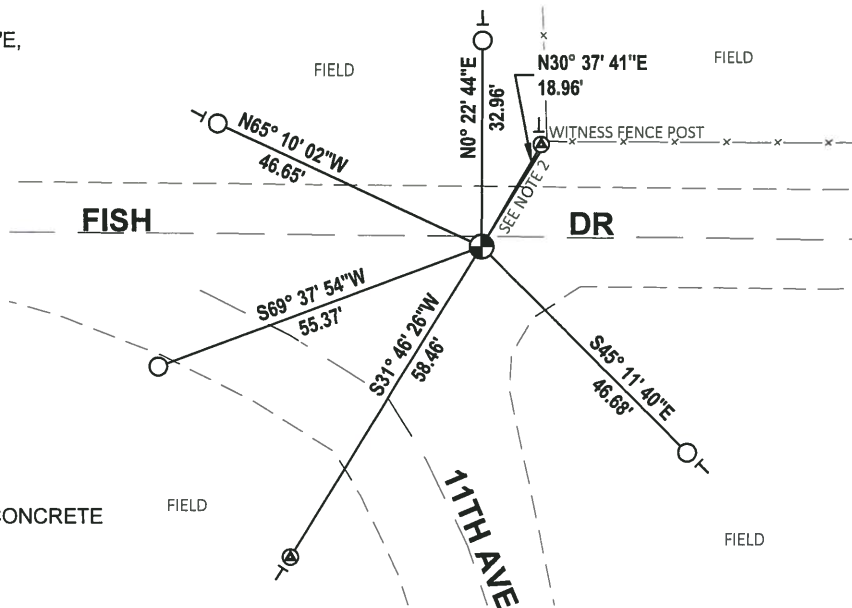
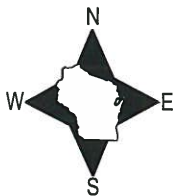
PROFESSIONAL LAND SURVEYOR

DATE 8-10-18

- TIE SKETCH

NOTE: THE CORNER FALLS 1.5± SOUTH OF THE CENTERLINE OF FISH DR.

NOTE 2: THE WITNESS POST IS N32° 00' 02"E, 19.88' FROM THE CORNER.



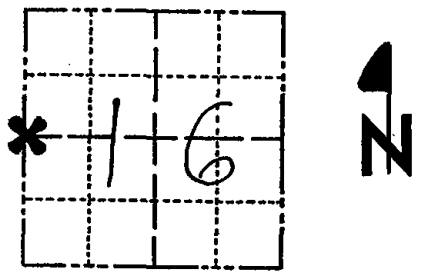
- FOUND 3/4" IRON ROD
- ⊕ FOUND ADAMS CO ALUMINUM CAP IN CONCRETE
- ⊗ FOUND HARRISON MONUMENT
- ⊥ VINYL "T" POST

ADAMS COUNTY

Survey Monument Record

TYPE OF MONUMENT: Harrison
STATE PLANE COORDINATES: N. E.
ELEVATION - M.S.L. DATUM:
THETA ANGLE:
FIELD BOOK: 37 PAGE 47

CORNER NO. 1095
SECTION 16
TOWN 15
RANGE 6



LOCATION (Indicated by 'X')

SEAL:

BASIS FOR MONUMENT LOCATION

(Use reverse side if necessary)

Show info such as: History of corner, with reference to Vol. and pg, dates, surveyor; exact description of monument replaced; if location computed, by taped or EDM traverse; landowner remarks, etc.

Ran EDM/transit traverse around Sections 9 and 16 to determine search areas.

Excavation with backhoe yielded no evidence of the original corner or any remonumentation.

Set corner by doubling over distance between the Northwest and Southwest corners of the NW 1/4 NW 1/4 of Section 16, and placing corner on line between the Southwest and Northwest corners of Section 16. (Said forty corner set by Dean Jesse of Midstate Assoc in survey dated 9-27-73).

Corner Set 6-9-76.



CERTIFIED CORRECT

Dale C. Hagen
Registered Land Surveyor

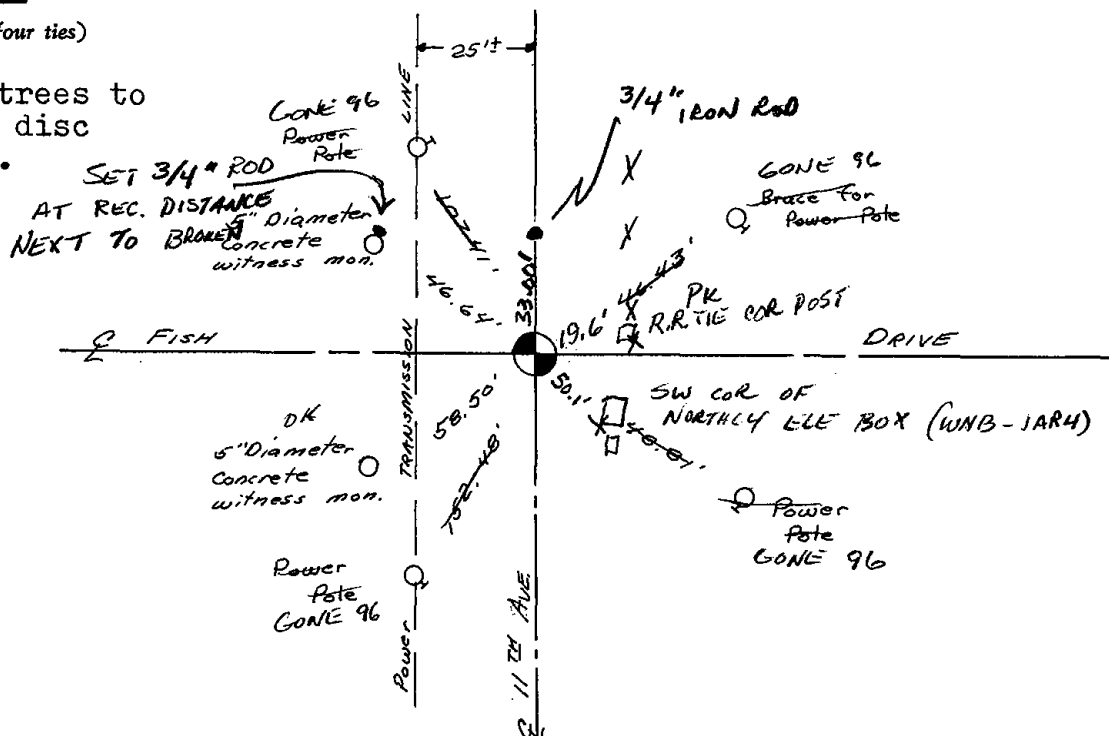
DATE: 9-20-76

* NOTE: SEE TIE SHEET 18 SEP 02 S. HIGLEY

TIE SKETCH

(Show at least four ties)

NOTE: Ties in trees to nail and disc in blaze.



MAINTENANCE RECORD

| Date | Init. | Remarks |
|----------|--------|--------------------|
| 12-28-81 | SK-RW | CORNERS O.K. |
| 1-28-85 | GIL-LS | OK |
| 1-110-91 | KE-JG | ALL OK |
| 1-16-96 | LS-SS | 4-GONE, 2 NEW TIES |
| 1-29-01 | JG-MH | OK |
| 4-27-06 | JG-EW | 2-NEW TIES |

U.S. PUBLIC LAND SURVEY MONUMENT RECORD

ADAMS COUNTY

TYPE OF MONUMENT: FOUND HARRISON

STATE PLANE COORDINATES: N _____
E _____

ELEVATION — M.S.L. DATUM: _____

THETA ANGLE: _____

FIELD BOOK: _____ PAGE _____

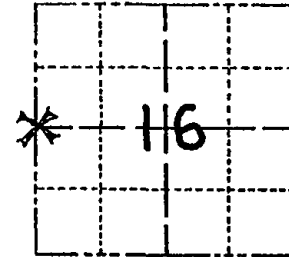
DRAWN BY: S. HIGLEY

CORNER NO. _____

SECTION 16

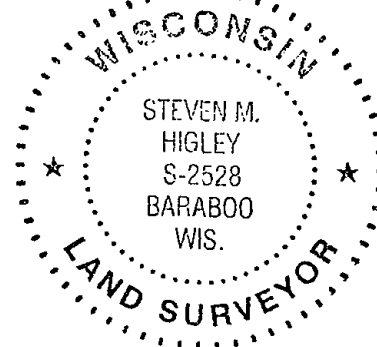
TOWN 15N

RANGE 6E



LOCATION
(Indicated by 'X')

SEAL:



BASIS FOR MONUMENT LOCATION

Show info such as: History of corner, with reference to Vol. and pg., dates, surveyor; exact description of monument replaced; if location computed, by taped or EDM traverse; landowner remarks, etc. (Use reverse side if necessary) (in conformance with Section A-E 502 of the Wisconsin Administrative Code)

MON. SET BY HAGEN - 9 JUN 76

MON. SET BY DOUBLING DISTANCE BETWEEN NW SEC. COR. AND SW COR. OF NW-NW, AND PLACING CORNER ON LINE BETWEEN NW & SW SEC. COR'S. (SW GR. OF NW-NW SET BY JESSE, 27 SEP 73).

16 SEP 02 - FOUND MON. INTACT. NO TIES REMAINED, POWER LINE SHOWN ON HAGEN TIE SHEET REMOVED. SET FOUR NEW TIES SMH-MCC

DATA SHOWN HERE ON CERTIFIED CORRECT

Registered Land Surveyor

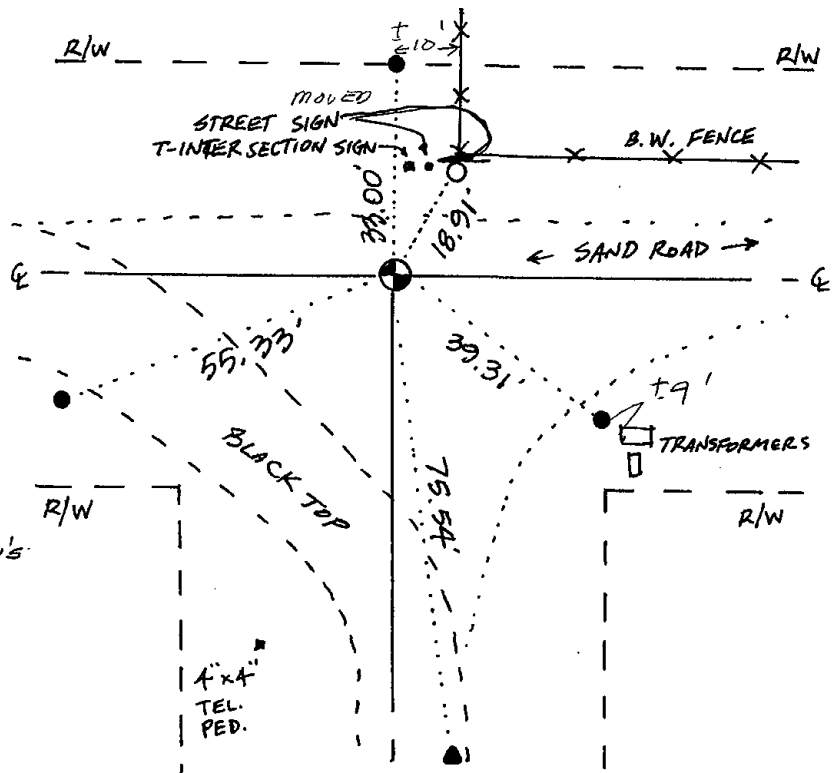
DATE: 19 SEP 02

TIE SKETCH

Show at least four ties, also fence lines, roads, topo, size and type of witness trees and if off road - best way to arrive at corner.

- - SET 3/4" ROD
- - SET CONC. MON. (5") WITH METAL CAP
- ▲ - SET PK NAIL

1" = 30'



MAINTENANCE RECORD

| Date | Init. | Remarks |
|----------|-------|---------------------------|
| 01-14-11 | SS | FD 3 MORE TIES ON HAGEN'S |
| | | |
| | | |
| | | |
| | | |

