

PUBLIC LAND SURVEY MONUMENT RECORD

TYPE OF MONUMENT: HARRISON
 ADAMS COUNTY COORDINATES, NAD 83 (2007)

N. 151366.638

E. 541833.675

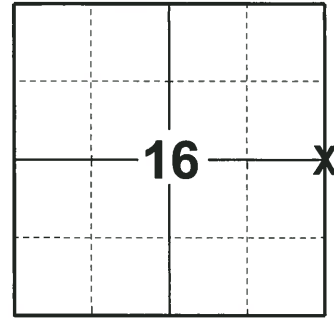
ELEVATION- DATUM

FIELD WORK DATE: 06/27/2018

BASIS FOR MONUMENT LOCATION

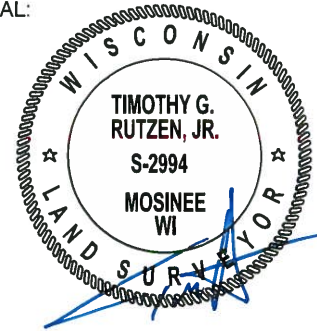
1976 - PLS 1103 RAN EDM/TRANSIT TRAVERSE AROUND SECTIONS 9 AND 16 TO DETERMINE THE SEARCH AREAS FOR INVESTIGATION. CALCULATED THE CORNER POSITION HALF WAY BETWEEN ADJACENT SECTION CORNERS AND AT A PROPORTIONATE 1320 FEET (AS RECORDED IN VOL 1, PAGE 57 OF ADAMS COUNTY SURVEY RECORDS) FROM THE SOUTHWEST CORNER OF THE SOUTHEAST QUARTER OF THE NORTHEAST QUARTER OF SECTION 16. EXCAVATION WITH A BACKHOE AT THE CALCULATED POSITION YIELDED NO EVIDENCE OF THE ORIGINAL CORNER OR ANY REMONUMENTATION. SET A HARRISON MONUMENT AT CALCULATED POSITION AND TIED OUT.

2018 - PLS 2994 FOUND A HARRISON MONUMENT 2" BELOW THE SURFACE AND 1 TIE. THE MONUMENT AGREES WITH THE EXISTING TIE. ACCEPTED THE HARRISON MONUMENT AS THE CORNER LOCATION. SET 3 NEW TIES AND MEASURED TO THE TIES.



LOCATION
 (INDICATE CORNER BY "X")

SEAL:



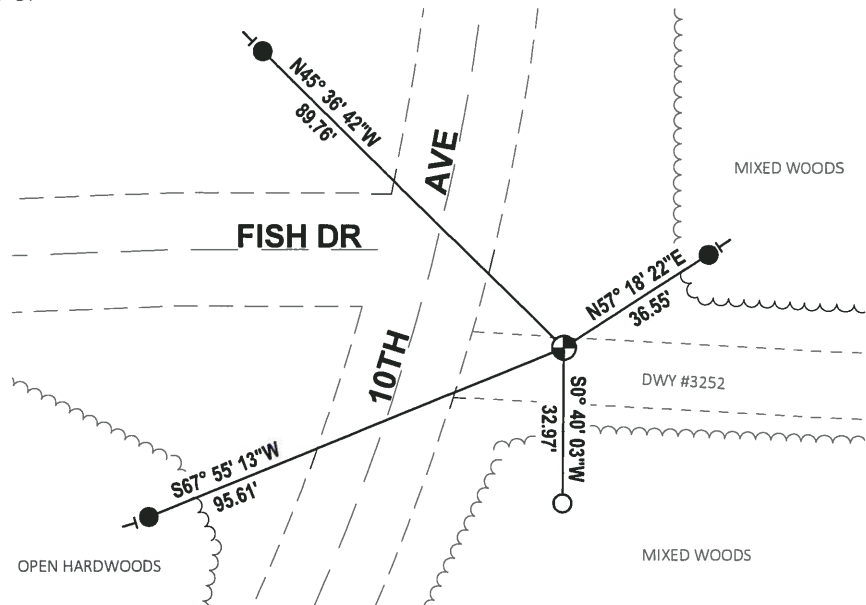
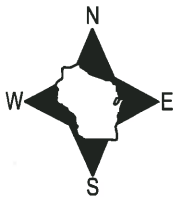
DATA SHOWN HERE ON THIS TIE SHEET IS CORRECT AND COMPLETE TO THE BEST OF MY KNOWLEDGE AND BELIEF.

PROFESSIONAL LAND SURVEYOR

DATE 8-10-18

- TIE SKETCH

NOTE: THE CORNER FALLS 5± NORTH OF THE CENTERLINE OF DWY #3252 AND 33± EAST OF THE CENTERLINE OF 10TH AVE.



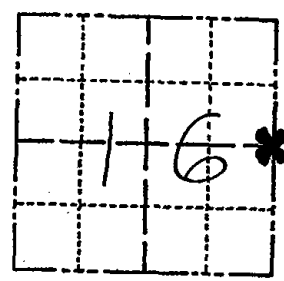
- SET 3/4" x 18" IRON REBAR, 1.50#/FT
- FOUND 3/4" IRON ROD
- ⊕ FOUND HARRISON MONUMENT
- | VINYL "T" POST

ADAMS COUNTY

Survey Monument Record

TYPE OF MONUMENT: Harrison
 STATE PLANE COORDINATES: N _____
 E _____
 ELEVATION — M.S.L. DATUM: _____
 THETA ANGLE: _____
 FIELD BOOK: 37 PAGE 47

CORNER NO. 1032
 SECTION 16
 TOWN 15
 RANGE 6



LOCATION
(Indicated by 'X')

BASIS FOR MONUMENT LOCATION

(Use reverse side if necessary)

Show info such as: History of corner, with reference to Vol. and pg, dates, surveyor; exact description of monument replaced; if location computed, by taped or EDM traverse; landowner remarks, etc.

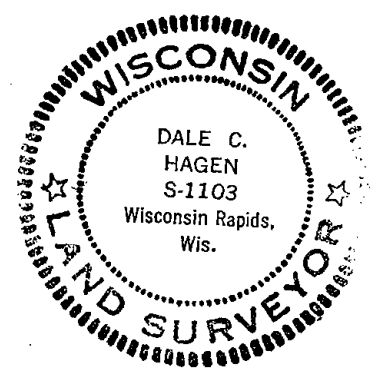
SEAL:

Ran EDM/transit traverse around Sections 9 and 16 to determine search areas for investigation.

Set corner half way between the adjacent Section corners and at a proportionate 1320 feet (as recorded in Vol 1, Page 57 of Adams County Survey Records) from the Southwest corner of the Southeast Quarter of the Northeast Quarter of Section 16.

Set 6-9-76.

Excavation w/ backhoe yielded no evidence of the original corner or any remonumentation.



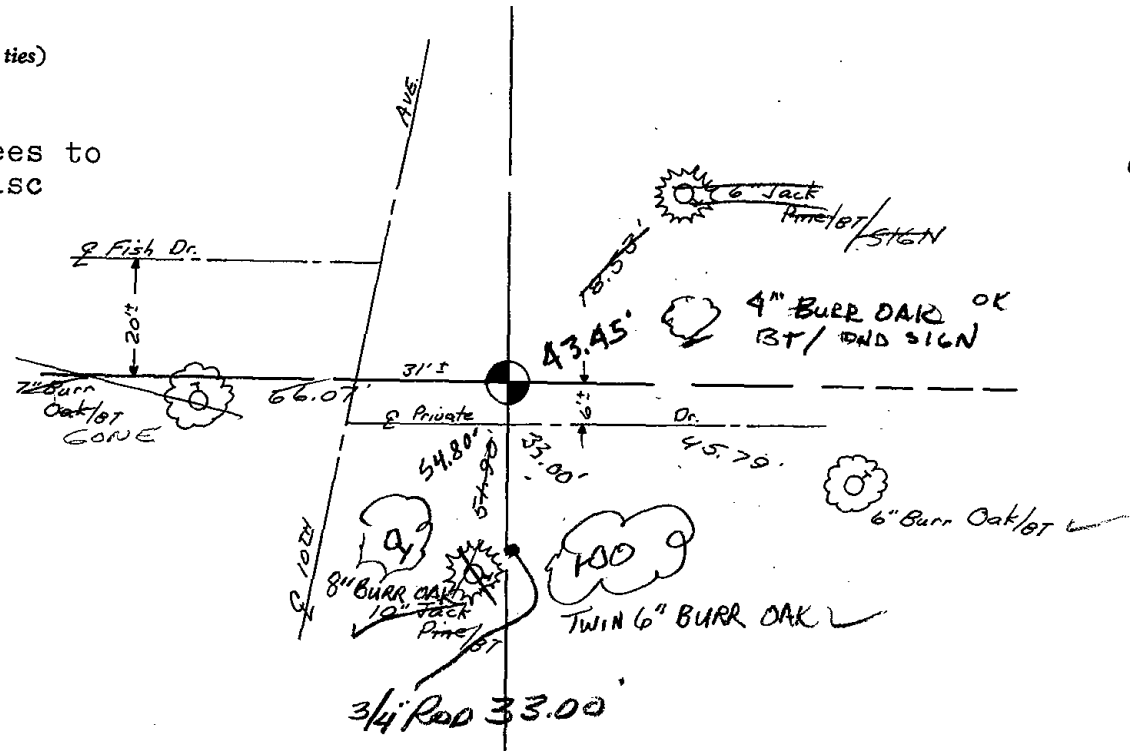
CERTIFIED CORRECT:

Dale C. Hagen
 Registered Land Surveyor
 DATE: 9-20-76

TIE SKETCH

(Show at least four ties)

NOTE:
 Ties in trees to nail and disc in blaze.



ADAMS COUNTY

Survey Monument Record

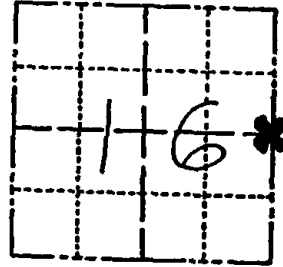
TYPE OF MONUMENT: Harrison
STATE PLANE COORDINATES: N _____
E _____

ELEVATION — M.S.L. DATUM: _____

THETA ANGLE: _____

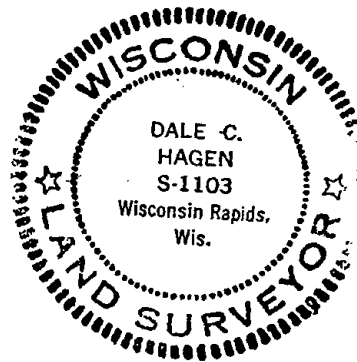
FIELD BOOK: 37 PAGE 47

CORNER NO. 1032
SECTION 16
TOWN 15
RANGE 6



LOCATION
(Indicated by 'X')

SEAL:



BASIS FOR MONUMENT LOCATION

(Use reverse side if necessary)

Show info such as: History of corner, with reference to Vol. and pg. dates, surveyor; exact description of monument replaced; if location computed, by taped or EDM traverse; landowner remarks, etc.

Ran EDM/transit traverse around Sections 9 and 16 to determine search areas for investigation.

Set corner half way between the adjacent Section corners and at a proportionate 1320 feet (as recorded in Vol 1, Page 57 of Adams County Survey Records) from the Southwest corner of the Southeast Quarter of the Northeast Quarter of Section 16.

Set 6-9-76.

Excavation w/ backhoe yielded no evidence of the original corner or any remonumentation.

CERTIFIED CORRECT:

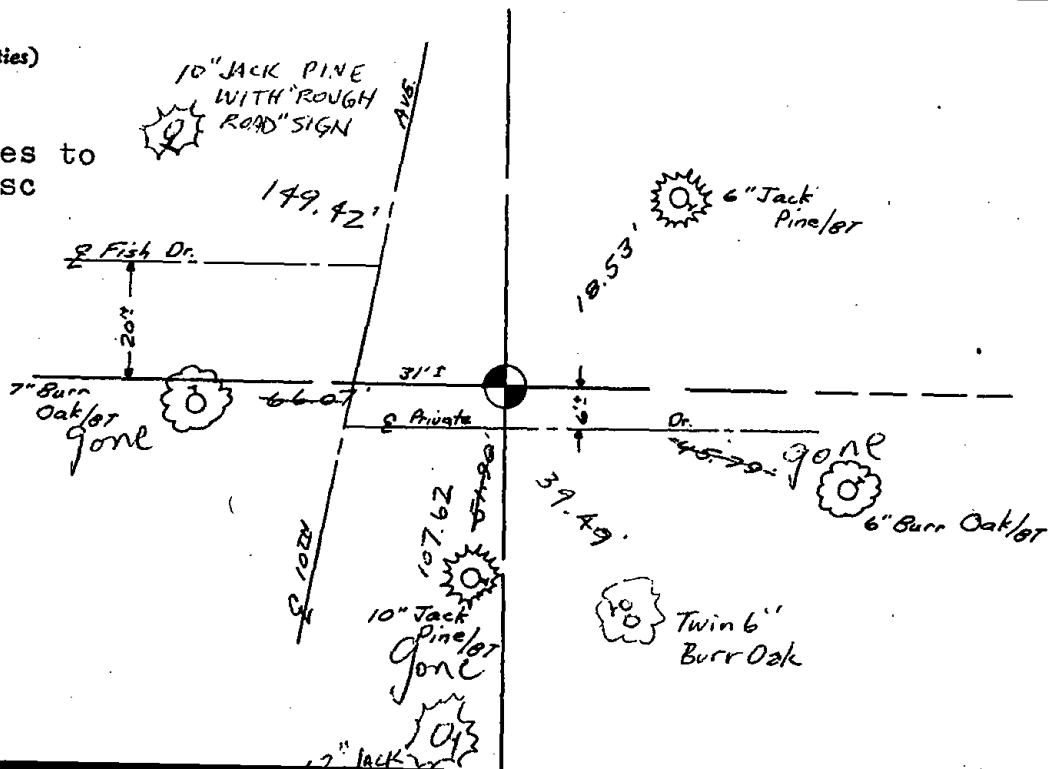
Dale C Hagen
Registered Land Surveyor
DATE: 9-20-76

NEW TIES Aug 22 '96 Steve Hagen
TIES OK May 4 '74 Ron Carlson

TIE SKETCH

(Show at least four ties)

NOTE:
Ties in trees to nail and disc in blaze.



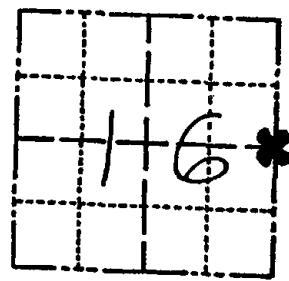
ADAMS COUNTY

Survey Monument Record

TYPE OF MONUMENT: Harrison
STATE PLANE COORDINATES: N _____
E _____

ELEVATION — M.S.L. DATUM: _____
THETA ANGLE: _____
FIELD BOOK: 37 PAGE 47

CORNER NO. 1032
SECTION 16
TOWN 15
RANGE 6



LOCATION
(Indicated by 'X')

BASIS FOR MONUMENT LOCATION

(Use reverse side if necessary)

Show info such as: History of corner, with reference to Vol. and pg. dates, surveyor; exact description of monument replaced; if location computed, by taped or EDM traverse; landowner remarks, etc.

SEAL:



Ran EDM/transit traverse around Sections 9 and 16 to determine search areas for investigation.

Set corner half way between the adjacent Section corners and at a proportionate 1320 feet (as recorded in Vol 1, Page 57 of Adams County Survey Records) from the Southwest corner of the Southeast Quarter of the Northeast Quarter of Section 16.

Set 6-9-76.

Excavation wi backhoe yielded no evidence of the original corner or any remonumentation.

CERTIFIED CORRECT:
Dale C. Hagen
Registered Land Surveyor
DATE: 9-20-76

Ties to NE 1/4 Sec 16

TIE SKETCH

(Show at least four ties)

NOTE:
Ties in trees to nail and disc in blaze.

