

## PUBLIC LAND SURVEY MONUMENT RECORD

TYPE OF MONUMENT: HARRISON  
 ADAMS COUNTY COORDINATES, NAD 83 (2007)

N. 151542.641

E. 547056.825

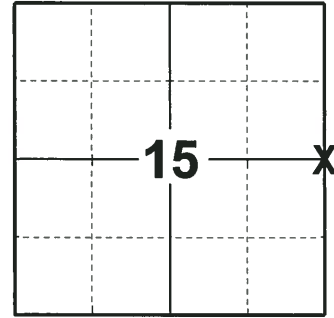
ELEVATION- - - - DATUM - - - -

FIELD WORK DATE: 06/27/2018

### BASIS FOR MONUMENT LOCATION

1972 - PLS 878 EXCAVATED AREA WITH A BACKHOE AND FOUND A 3"x24" CHARRED STAKE IN GOOD CONDITION. SET A HARRISON MONUMENT THE SAME AND TIED OUT THIS LOCATION. TRAVERSE OF SECTION 14 AGREES THIS POINT IS IN THE CORRECT LOCATION.

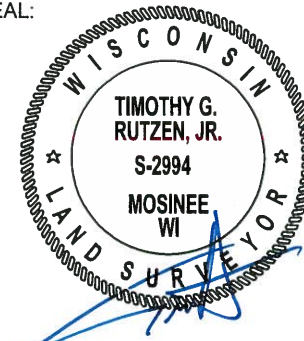
2018 - PLS 2994 FOUND A HARRISON MONUMENT 8" BELOW THE ROAD SURFACE AND 2 TIES. THE MONUMENT AGREES WITH THE EXISTING TIES. ACCEPTED THE HARRISON MONUMENT AS THE CORNER LOCATION. SET 2 NEW TIES AND MEASURED TO THE TIES.



**LOCATION**

(INDICATE CORNER BY "X")

SEAL:

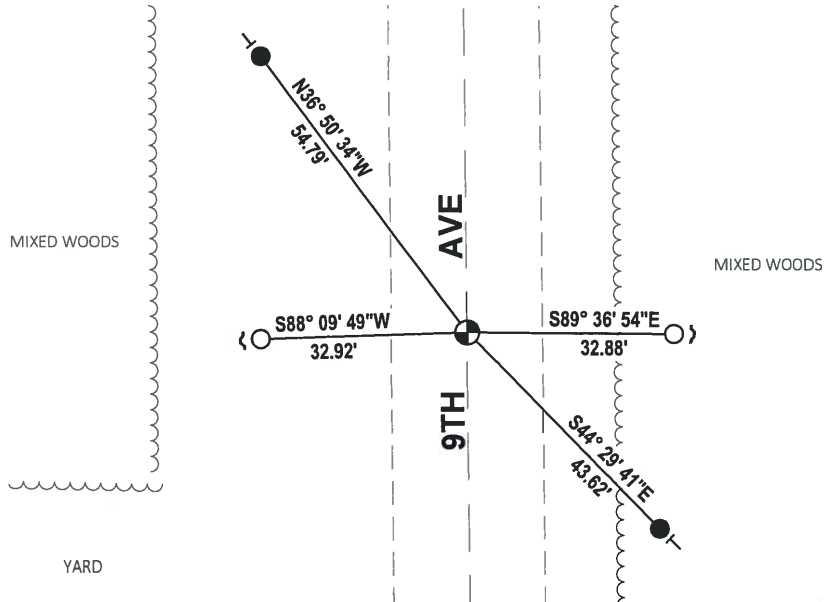
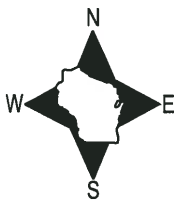


DATA SHOWN HERE ON THIS TIE SHEET IS CORRECT AND COMPLETE TO THE BEST OF MY KNOWLEDGE AND BELIEF.

PROFESSIONAL LAND SURVEYOR

DATE 8-10-18

### - TIE SKETCH



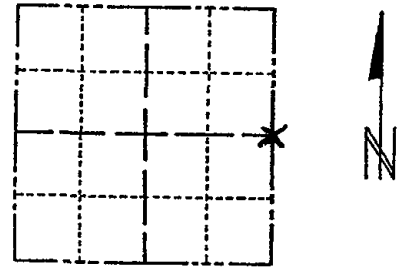
- SET 3/4" x 18" IRON REBAR, 1.50#/FT
- FOUND 3/4" IRON ROD
- ⊕ FOUND HARRISON MONUMENT
- ↘ STEEL FENCE POST
- | VINYL "T" POST

# ADAMS COUNTY

## Survey Monument Record

TYPE OF MONUMENT: Harrison standard  
 STATE PLANE COORDINATES: N \_\_\_\_\_  
 E \_\_\_\_\_  
 ELEVATION — M.S.L. DATUM: \_\_\_\_\_  
 THETA ANGLE: \_\_\_\_\_  
 FIELD BOOK: 107 PAGE 48

CORNER NO. 227  
 SECTION 15  
 TOWN 15  
 RANGE 6



LOCATION  
(Indicated by 'X')

### BASIS FOR MONUMENT LOCATION

(Use reverse side if necessary)

Show info such as: History of corner, with reference to Vol. and pg, dates, surveyor; exact description of monument replaced; if location computed, by taped or EDM traverse; landowner remarks, etc.

Excavated area with backhoe.  
 Found 3" x 24" charred stake  
 in good condition. Monumented  
 this point. Traverse of section 14  
 indicates this point correct in location.

CORNER O.K. 9-25-76 RN-55

### MAINTENANCE RECORD

Date	Init.	Remarks
12-30-81	SK-RW	Corner O.K.
1-21-86	GB-SS	OK
1-14-91	JG-KZ	ALL OK
11-22-95	SS	1606E - ADD 3/4" ROD
1-29-01	JG-MH	OK
4-27-06	JG-EW	1-NEW TIE
01-13-11	SS	OK

SEAL:



CERTIFIED CORRECT

*Anthony B. Kiedrowski*  
 Registered Land Surveyor

DATE: \_\_\_\_\_

### TIE SKETCH

(Show at least four ties)

