

PUBLIC LAND SURVEY MONUMENT RECORD

TYPE OF MONUMENT: HARRISON
 ADAMS COUNTY COORDINATES, NAD 83 (2007)

N. 151525.571

E. 552325.074

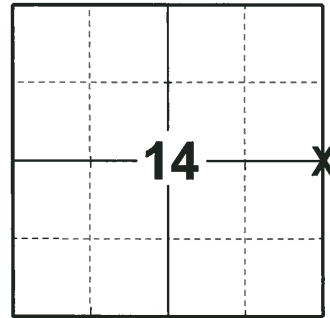
ELEVATION: DATUM

FIELD WORK DATE: 06/27/2018

BASIS FOR MONUMENT LOCATION

1972 - PLS 878 CALCULATED THE CORNER POSITION BY ANALYZING A TRAVERSE OF THE ENTIRE SECTION. SET A HARRISON MONUMENT AT CALCULATED POSITION AND TIED OUT.

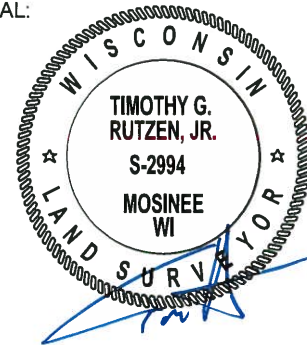
2018 - PLS 2994 FOUND A HARRISON MONUMENT 4" BELOW THE ROAD SURFACE AND 1 PROPERTY IRON. FOUND NO EVIDENCE OF ANY OF THE TIES OR WITNESSES. VERIFIED THE CORNER TO BE EQUIDISTANT WITH THE NE AND SE CORNERS BUT IS 5± WEST FROM BEING ON LINE. ACCEPTED THE HARRISON MONUMENT AS THE BEST EVIDENCE OF THE CORNER LOCATION. SET 3 NEW TIES AND MEASURED TO THE TIES AND PROPERTY IRON.



LOCATION

(INDICATE CORNER BY "X")

SEAL:

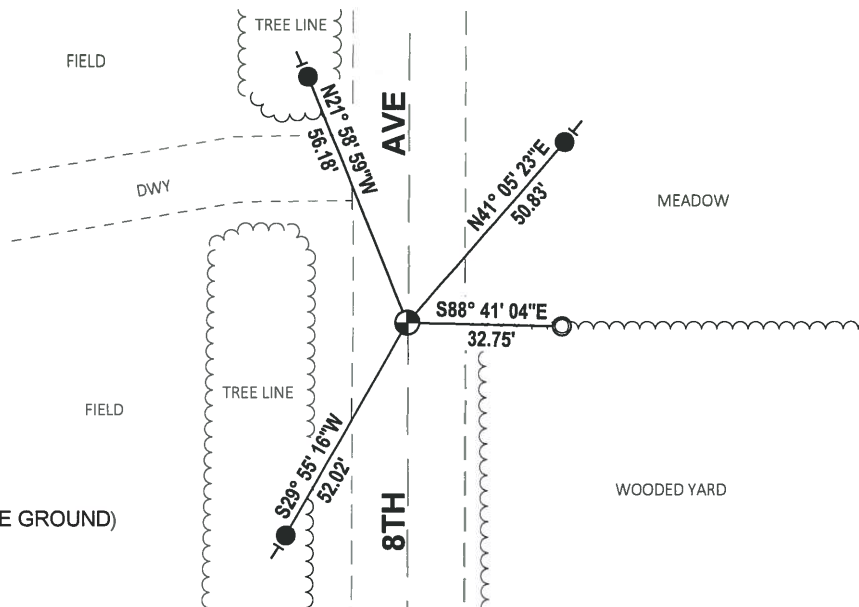
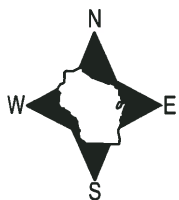


DATA SHOWN HERE ON THIS TIE SHEET IS CORRECT AND COMPLETE TO THE BEST OF MY KNOWLEDGE AND BELIEF.

PROFESSIONAL LAND SURVEYOR

DATE 8-10-18

- TIE SKETCH



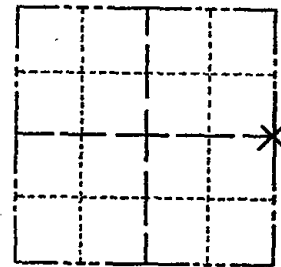
- SET 3/4" x 18" IRON REBAR, 1.50#/FT
- FOUND 1-1/4" O.D. IRON PIPE (12" ABOVE GROUND)
- ⊙ FOUND HARRISON MONUMENT
- VINYL "T" POST

ADAMS COUNTY

Survey Monument Record

TYPE OF MONUMENT: 30" HARRISON
 STATE PLANE COORDINATES: N _____
 E _____
 ELEVATION — M.S.L. DATUM: _____
 THETA ANGLE: _____
 FIELD BOOK: 107 PAGE 70

CORNER NO. 240
 SECTION 14
 TOWN 15
 RANGE 6



LOCATION
(Indicated by 'X')

SEAL:

BASIS FOR MONUMENT LOCATION

(Use reverse side if necessary)

Show info such as: History of corner, with reference to Vol. and pg, dates, surveyor; exact description of monument replaced; if location computed, by taped or EDM traverse; landowner remarks, etc.

Set by analyzing traverse of entire section.

CORNER O.K. - new ties 9-25-76 RN-SS

MAINTENANCE RECORD

Date	Ini:	Remarks
12-30-81	SK-BW	Corner O.K
1-21-66	GRSS	OK
2-14-91	JG	ALL OK
11-22-95	SS	Mon. OK
1-29-01	JG-M.H.	OK
4-27-06	JG-EW	2 NEW TIES
9-13-11	SS	OK



CERTIFIED CORRECT:

Anthony B. Kiedrowski
 Registered Land Surveyor

DATE: 12/14/12

TIE SKETCH

(Show at least four ties)

