

13 SECTION 15 TOWN 06 RANGE

# ADAMS COUNTY

COUNTY CORNER NO: 60  
ROMPORTOL ID: 41506132000

## PUBLIC LAND SURVEY MONUMENT RECORD

TYPE OF MONUMENT: HARRISON (BROKEN TOP)  
ADAMS COUNTY COORDINATES, NAD 83 (2007)

N. 151401.720

E. 557726.796

ELEVATION- --- DATUM ---

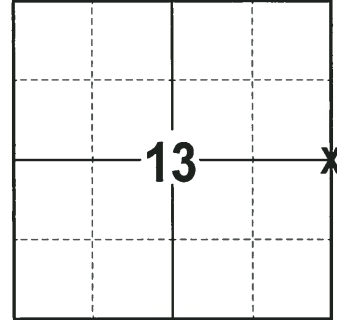
FIELD WORK DATE: 09/19/2017

### BASIS FOR MONUMENT LOCATION

1972 - PLS 981 FOUND A PK NAIL AT THE CORNER LOCATION AND SET A 30" HARRISON MONUMENT IN ITS PLACE AND TIED OUT.

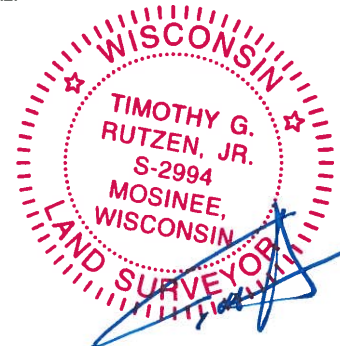
1999 - PLS 2281 HARRISON MONUMENT RE-SET AFTER COMPLETION OF THE COUNTY HIGHWAY B RECONSTRUCTION PROJECT. LOCATION IS BASED ON THE EXISTING MONUMENT FOUND BEFORE CONSTRUCTION BEGAN. CORNER WAS RE-TIED.

2017 - PLS 2994 FOUND A HARRISON MONUMENT 6" BELOW THE ROAD SURFACE, 4 TIES AND A PROPERTY IRON USED AS A TIE. THE MONUMENT AGREES WITH ALL EXISTING TIES AND THE PROPERTY IRON. ACCEPTED THE HARRISON MONUMENT AS THE CORNER LOCATION AND RE-MEASURED TO THE TIES AND PROPERTY IRON.



**LOCATION**  
(INDICATE CORNER BY "X")

SEAL:



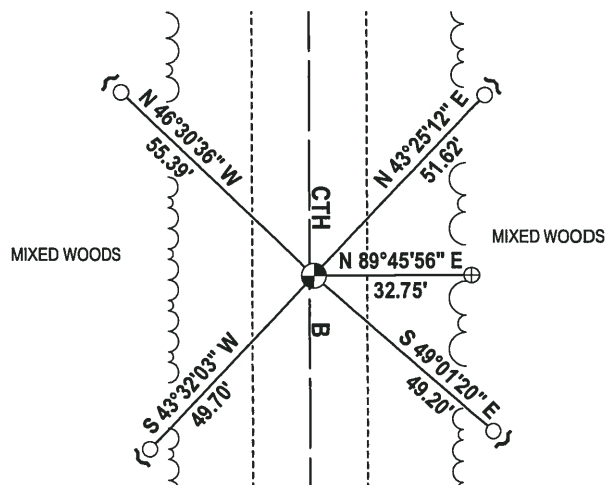
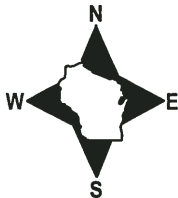
DATA SHOWN HERE ON THIS TIE SHEET IS CORRECT AND COMPLETE TO THE BEST OF MY KNOWLEDGE AND BELIEF.

PROFESSIONAL LAND SURVEYOR

DATE 11-15-17

### - TIE SKETCH -

NOTE: THE CORNER FALLS 1± EAST OF THE CENTERLINE OF CTH B.



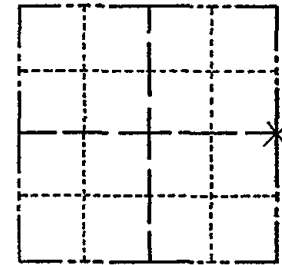
- 1-1/4" O.D. IRON PIPE FOUND
- ⊕ 2-3/8" O.D. IRON PIPE FOUND
- HARRISON (TOP-BROKEN) FOUND
- ~ STEEL FENCE POST

ADAMS COUNTY

Survey Monument Record

TYPE OF MONUMENT: 30" HARRISON
STATE PLANE COORDINATES: N
E
ELEVATION - M.S.L. DATUM:
THETA ANGLE:
FIELD BOOK: 103 PAGE 134

CORNER NO. 134
SECTION 13
TOWN 15
RANGE 6



LOCATION (Indicated by 'X')

BASIS FOR MONUMENT LOCATION

(Use reverse side if necessary)

Show info such as: History of corner, with reference to Vol. and pg, dates, surveyor; exact description of monument replaced; if location computed, by taped or EDM traverse; landowner remarks, etc.

SEAL:

Found "PK", set 30" Harrison monument on may 17, 1972.

Sam T. Mullen R.L.S. 981

CORNER O.K. 4-23-76 RN-SS
" / TIE GONE - SEE C.S.M. S.E. 1-16-86 GR-SS
ALL OK 1-14-91 KE-SG
12-18-90 KC SEE ATTACHED PAGE
11-21-95 SS " " " O.K.
SEE ATTACHED SHEET, GROHOLSKI, 12/21/99
2-6-01 JG, SEE ATTACHED SHEETS
3-13-06 JG-SS " "
12-21-11 MS " " OK

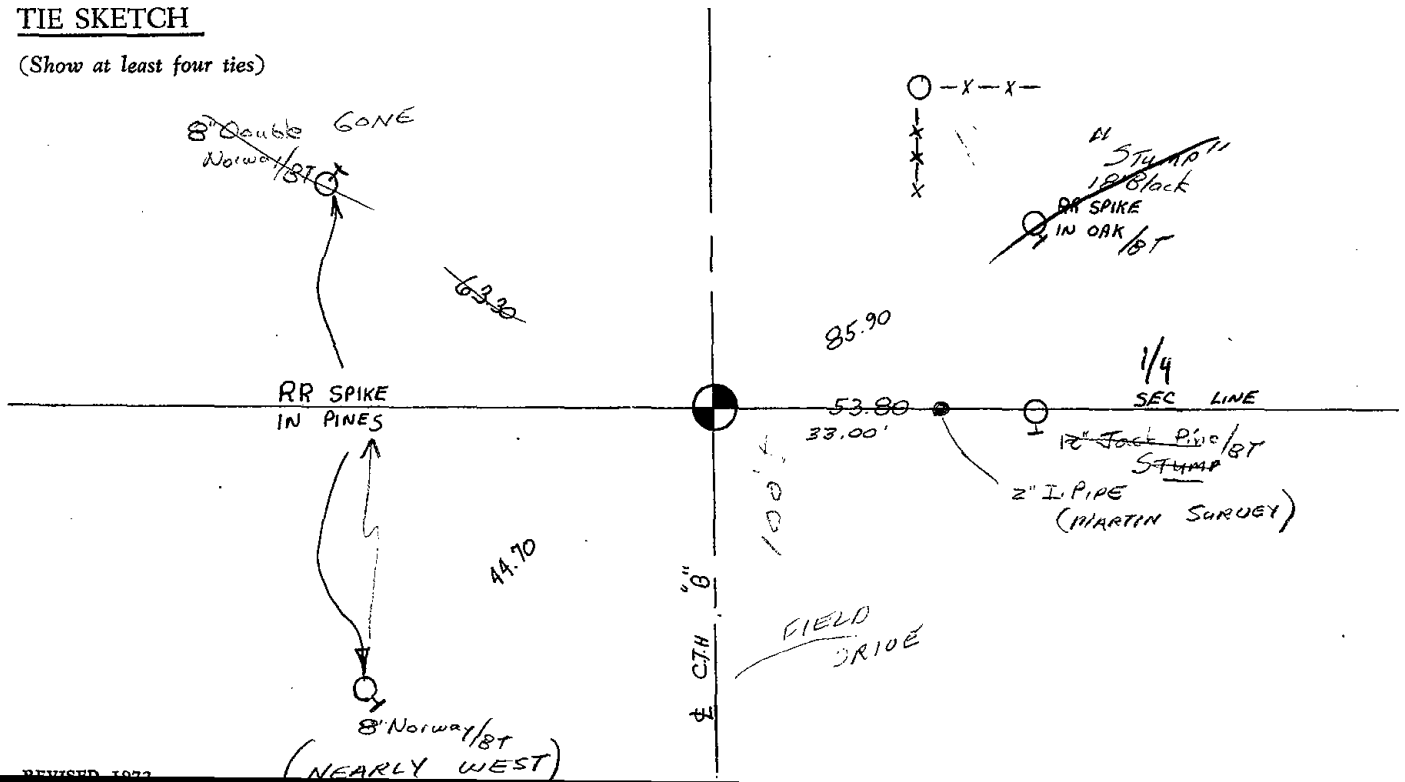
CERTIFIED CORRECT:

Registered Land Surveyor

DATE:

TIE SKETCH

(Show at least four ties)



Survey Monument Record

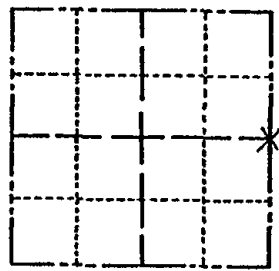
TYPE OF MONUMENT: 30" HARRISON

STATE PLANE COORDINATES: N \_\_\_\_\_ E \_\_\_\_\_

ELEVATION — M.S.L. DATUM: \_\_\_\_\_

THETA ANGLE: \_\_\_\_\_

FIELD BOOK: 103 PAGE 134



LOCATION (Indicated by 'X')

SEAL:

BASIS FOR MONUMENT LOCATION

(Use reverse side if necessary)

Show info such as: History of corner, with reference to Vol. and pg. dates, surveyor; exact description of monument replaced; if location computed, by taped or EDM traverse; landowner remarks, etc.

Found "PK"; set 30" Harrison monument on may 17, 1972.

Sam T. Mullen R.L.S. 981

CORNER O.K. 42376 R.V.S.S  
" / TIC GONE SEC CORNER 55'0" 116 86 GR 55

CERTIFIED CORRECT:

Registered Land Surveyor

DATE: \_\_\_\_\_

*Dec 18 '90 Ken Carlson*

TIE SKETCH

(Show at least four ties)

