

# U.S. PUBLIC LAND SURVEY MONUMENT RECORD

## ADAMS COUNTY



Land Surveying  
Landscape Architecture  
Engineering  
Jordan G. Brost, PLS #3009  
4941 Kilschling Court  
Stevens Point, WI 54481  
715.344.9999 (Ph) 715.344.9922 (Fax)

This record shall show the location of the corner and shall include all of the following nine elements (a through i)

TYPE OF MONUMENT: BERNTSEN SURVEY MARKER NAIL

ADAMS COUNTY COORDINATES: N: 148725.527

E: 541800.410

ELEVATION: -M.S.L. DATUM \_\_\_\_\_

ELLIP. HEIGHT: \_\_\_\_\_

LATITUDE: \_\_\_\_\_

LONGITUDE: \_\_\_\_\_

- FOUND
- SET
- RE-SET
- RE-TIED

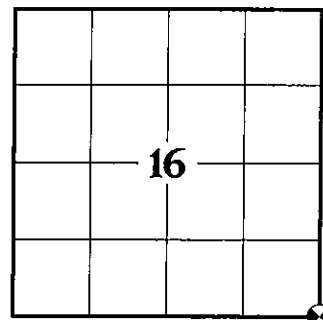
ORDER OF ACCURACY:

- FIRST \_\_\_\_\_
- SECOND \_\_\_\_\_
- THIRD X
- FOURTH \_\_\_\_\_
- UNKNOWN \_\_\_\_\_
- OTHER \_\_\_\_\_

REFERENCE DATUM: NAD 83 (2011)

(a) Identify the corner by reference to the U.S. public land survey system.

CORNER NO. 67  
ROMPORTOL ID: 41506160000  
SECTION 16  
TOWNSHIP 15 NORTH  
RANGE 06 EAST



SECTION IDENTIFICATION

(b) Describe any record evidence, monument evidence, occupational evidence, testimonial evidence, or any other material evidence considered by the professional land surveyor, and whether the monument was found or placed

**DALE C. HAGEN, PLS 1103 SET HARRISON MONUMENT BY DOUBLE PROPORTIONATE MEASURE BETWEEN ADJACENT SECTION CORNERS. PER PREVIOUS TIE SHEET DATED SEPTEMBER 20, 1976.**

**ERNEST WOORSTER, PLS 1741 LOCATED AND TIED PRIOR TO RECONSTRUCTION OF THE HIGHWAY. NEW TIES PROVIDED. TIES ARE AL. DISC SET IN CONCRETE. DISC STATES WISCONSIN DEPARTMENT OF TRANSPORTATION DO NOT DISTURB. PER PREVIOUS TIE SHEET DATED NOVEMBER 15, 2001.**

**TIMOTHY G. RUTZEN, JR., PLS 2994 FOUND 4 TIES AND NO EVIDENCE OF THE CORNER IN THE ROADWAY. CALCULATED THE CORNER POSITION WITH THE 4 TIES AND THEY ALL MATCHED WELL. "ACCEPTED" THIS METHOD TO ESTABLISH THE CORNER LOCATION. RE-SET A SURVEY NAIL IN THE ROAD SURFACE. RE-MEASURED TO THE EXISTING TIES. PER PREVIOUS TIE SHEET DATED AUGUST 10, 2018.**

**ON APRIL 6, 2021, I FOUND A SURVEY NAIL AT THE CORNER LOCATION AND FOUR EXISTING WITNESS MONUMENTS AS SHOWN ON PREVIOUS TIE SHEET DATED AUGUST 10, 2018. EXISTING MONUMENT CHECKED WELL WITH WITNESS MONUMENTS AND WAS ACCEPTED AS THE CORNER LOCATION. MONUMENT AND WITNESSES WERE TIED BEFORE RECONSTRUCTION OF STATE HWY "82".**

**ON OCTOBER 27, 2021, AFTER CONSTRUCTION WAS COMPLETE, I SET A BERNTSEN SURVEY NAIL IN CONCRETE AT THE PREVIOUS SURVEYED LOCATION AND VERIFIED 2 WITNESS MONUMENTS AS PREVIOUSLY FOUND, WHICH WERE IN GOOD CONDITION. SET 2 WITNESS CORNERS IN THE SOUTHEAST AND SOUTHWEST QUADRANTS OF THE INTERSECTION.**

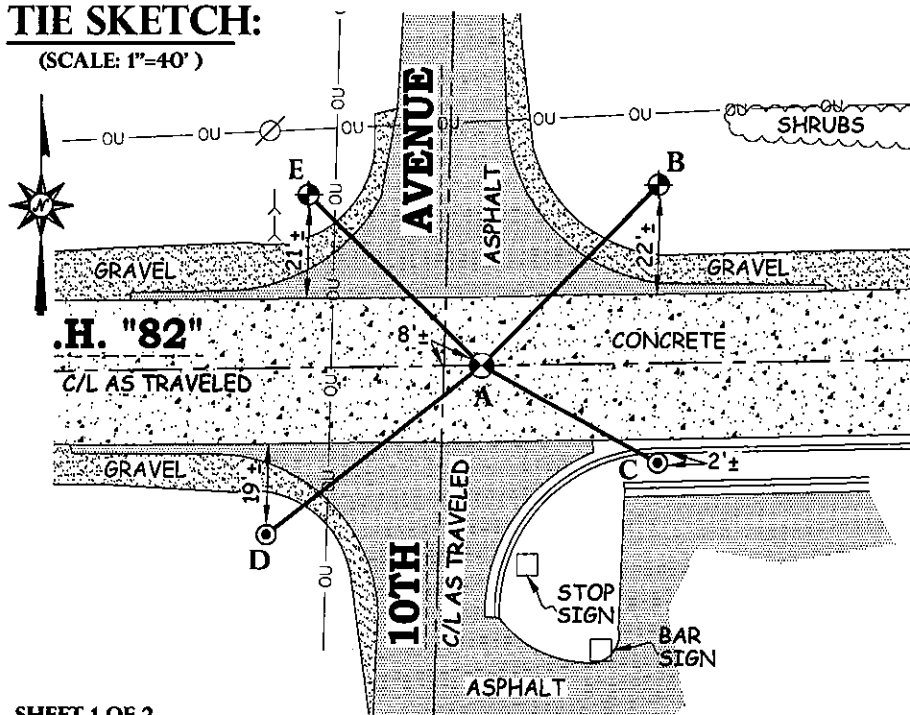
(c) In the plan view drawing below, provide reference ties to at least 4 witness monuments. Witness monuments shall be concrete, natural stone, iron, bearing trees or other equally durable material, except wood other than bearing trees.

(d) Show a plan view drawing depicting the relevant monuments and reference ties which is sufficient in detail to enable accurate relocation of the corner monument if the corner monument is disturbed.

**DRAFTED BY JORDAN G. BROST  
DRAWN BY TRAVIS PLANTICO**

### TIE SKETCH:

(SCALE: 1"=40')



### LEGEND AND NOTES:

- SET BERNTSEN SURVEY MARKER NAIL
  - DOT ALUMINUM CAP MONUMENT IN CONCRETE FOUND
  - 3/4" X 18" IRON REBAR SET WEIGHING 150 LBS/LIN. FT. (WITNESS MONUMENT)
  - OVERHEAD UTILITIES LINE
  - POWER POLE
- |     |                          |                     |
|-----|--------------------------|---------------------|
| A-B | (N 44°03'25" E) (52.72') | N 44°03'00"E 52.70' |
| A-C | S 61°13'19"E 41.97'      |                     |
| A-D | S 51°33'41"W 56.96'      |                     |
| A-E | (N 45°23'12" W) (50.91') | N 45°23'55"W 50.92' |

COORDINATES ARE REFERENCED TO THE ADAMS COUNTY COORDINATE SYSTEM AS DEVELOPED BY THE WISCONSIN DEPARTMENT OF TRANSPORTATION.

**U.S. PUBLIC LAND SURVEY MONUMENT RECORD**  
**ADAMS COUNTY**



Land Surveying  
 Landscape Architecture  
 Engineering  
**Jordan G. Brost, PLS #3009**  
 4941 Kirschling Court  
 Stevens Point, WI 54481  
 715.344.9999(PH) 715.344.9922(FX)

(e) A description of any material discrepancy between the location of the corner monument as restored and the monument location of that corner as previously established.

(a) Identify the corner by reference to the U.S. public land survey system.

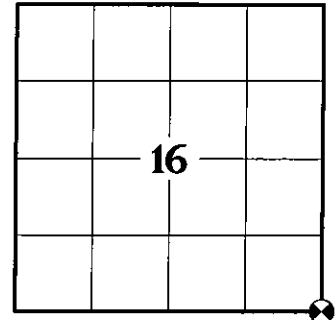
CORNER NO. 67  
 ROMPORTOL ID: 41506160000  
 SECTION 16  
 TOWNSHIP 15 NORTH  
 RANGE 06 EAST

(f) Was the corner restored through acceptance of (1) an obliterated evidence location, or (2) a found perpetuated location.

**FOUND PERPETUATED LOCATION**

(g & h) Was the corner reestablished through lost corner proportionate methods? If so, show the method, including the directions and distances to other public land survey corners used as evidence or used for proportioning in determining the corner location.

NO



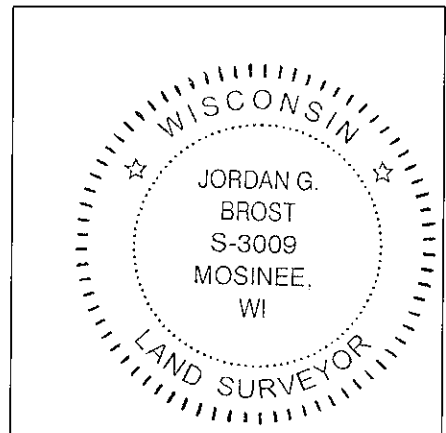
SECTION IDENTIFICATION

(i) I, Jordan G. Brost, hereby certify that the corner location shown on this record was determined by me or under my direction and control and that this U.S. Public Land Survey Monument Record is correct and complete to the best of my knowledge and belief.

Jordan G. Brost, PLS # 3009

11/24/2021  
 Date

SEAL



16  
SECTION

15  
TOWN

06  
RANGE

# ADAMS COUNTY

COUNTY CORNER NO: 67

ROMPORTOL ID: 41506160000

## PUBLIC LAND SURVEY MONUMENT RECORD

TYPE OF MONUMENT: SURVEY NAIL

ADAMS COUNTY COORDINATES, NAD 83 (2007)

N. 148725.557

E. 541800.272

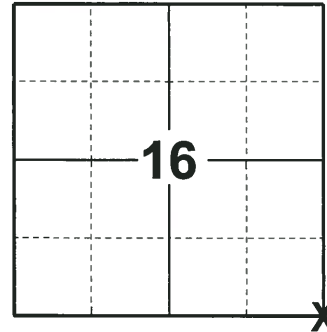
ELEVATION-      DATUM     

FIELD WORK DATE: 06/27/2018

### BASIS FOR MONUMENT LOCATION

2015 - PLS 2038 FOUND A HARRISON MONUMENT AND TIED PRIOR TO RECONSTRUCTION OF STH 82. TIES ARE FOUND DISC IN CONCRETE AND SET REBAR WITH CAP AS SHOWN. DISC AND CAP STATE "WISCONSIN DEPT. OF TRANSPORTATION DO NOT DISTURB".

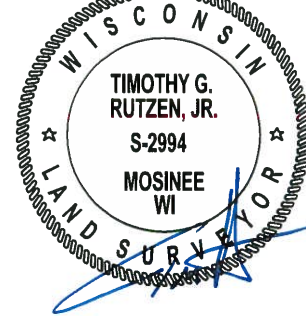
2018 - PLS 2994 FOUND 4 TIES AND NO EVIDENCE OF THE CORNER IN THE ROADWAY. CALCULATED THE CORNER POSITION WITH THE 4 TIES AND THEY ALL MATCHED WELL. "ACCEPTED" THIS METHOD TO ESTABLISH THE CORNER LOCATION. RE-SET A SURVEY NAIL IN THE ROAD SURFACE. RE-MEASURED TO THE EXISTING TIES.



**LOCATION**

(INDICATE CORNER BY "X")

SEAL:



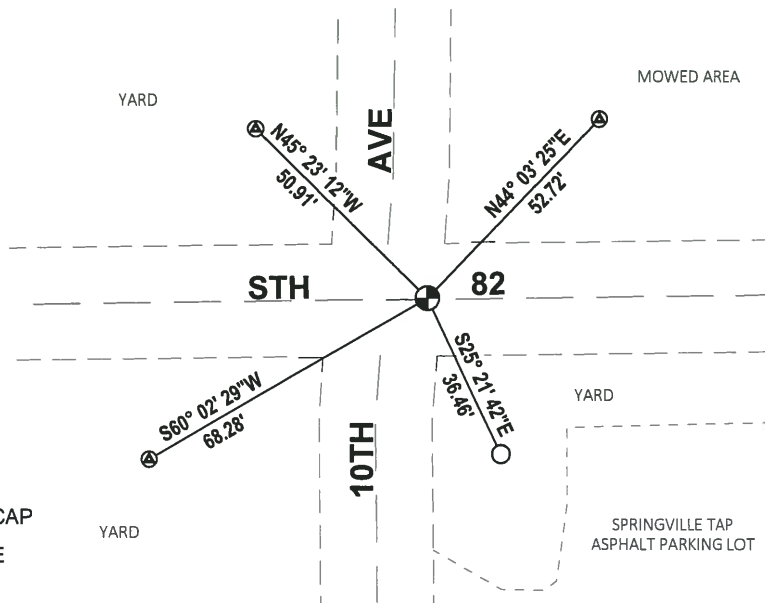
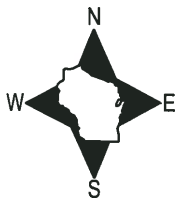
DATA SHOWN HERE ON THIS TIE SHEET IS CORRECT AND COMPLETE TO THE BEST OF MY KNOWLEDGE AND BELIEF.

PROFESSIONAL LAND SURVEYOR

DATE 8-10-18

### - TIE SKETCH

NOTE: THE CORNER FALLS 0.5'± NORTH OF THE CENTERLINE OF STH 82 AND 9'± EAST OF THE CENTERLINE OF 10TH AVE.



- FOUND 3/4" IRON ROD W/WISDOT ALUMINUM CAP
- ⊗ FOUND WISDOT ALUMINUM CAP IN CONCRETE
- ⊕ SURVEY NAIL RE-SET

**Government Land Corner Certificate**

ADAMS County  
 TYPE OF MONUMENT HARRISON

CORNER NO. 67  
 SECTION 15  
 TOWN T15N  
 RANGE R6E

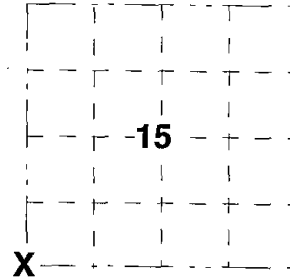
STATE PLANE COORDINATES: N. \_\_\_\_\_  
 E. \_\_\_\_\_

ELEVATION \_\_\_\_\_ M.S.L. DATUM: \_\_\_\_\_

THETA ANGLE: \_\_\_\_\_

FIELD BOOK: \_\_\_\_\_ PAGE: \_\_\_\_\_

DRAWN BY: E.W.

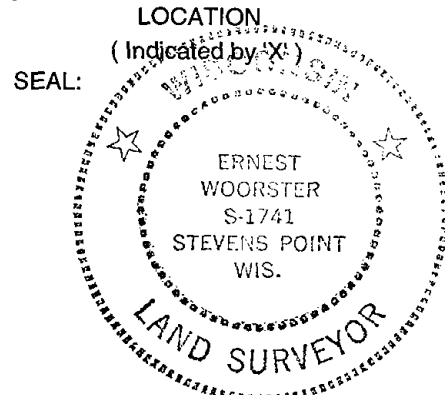


**BASIS FOR MONUMENT LOCATION**

Show info such as; History of corner, with reference to Vol. and pg., dates, surveyor, exact description of monument replaced; if location computed by taped or EDM traverse; landowner remarks, etc. ( use reverse side if necessary ).

MONUMENT LOCATED AND TIED PRIOR TO RECONSTRUCTION OF THE HIGHWAY. NEW TIES PROVIDED. TIES ARE AL. DISC SET IN CONCRETE. DISC STATES WISCONSIN DEPARTMENT OF TRANSPORTATION DO NOT DISTURB.

*ALL OK - 4-27-06 - JG-EW*  
*" 1-10-11 GR-SS*



DATA SHOWN HERE ON CERTIFIED CORRECT:

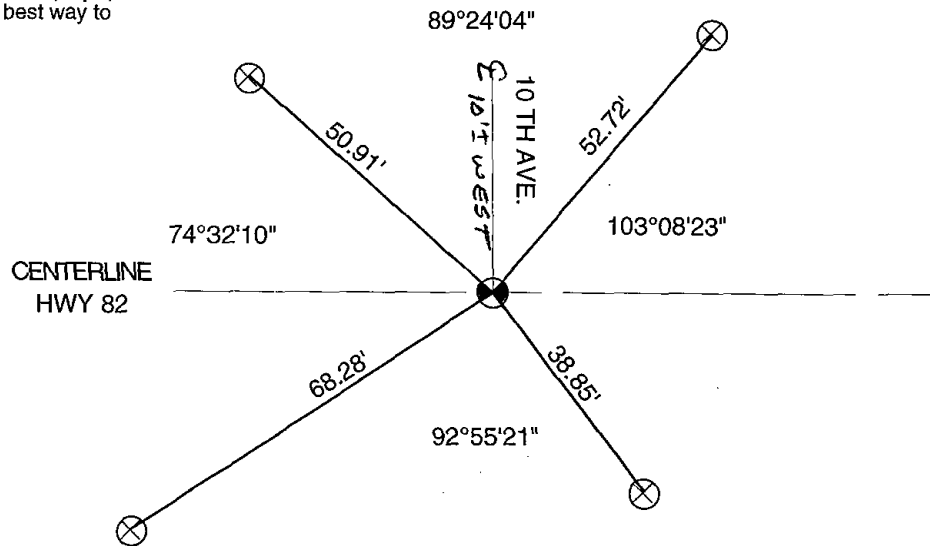
*[Handwritten Signature]*

Registered Land Surveyor

DATE 15 Nov 01

**TIE SKETCH**

Show at least four ties; also fence lines, roads, topo, size and type of witness trees' and if off road- best way to arrive at corner.



ADAMS COUNTY

Survey Monument Record

TYPE OF MONUMENT: Harrison

STATE PLANE COORDINATES: N \_\_\_\_\_

E \_\_\_\_\_

ELEVATION — M.S.L. DATUM: \_\_\_\_\_

THETA ANGLE: \_\_\_\_\_

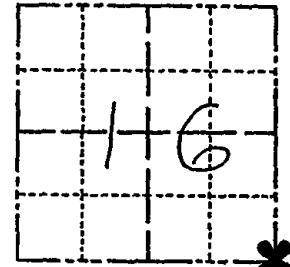
FIELD BOOK: 37 PAGE 45

CORNER NO. 1033 (67)

SECTION 16

TOWN 15

RANGE 6



LOCATION  
(Indicated by 'X')

SEAL:

BASIS FOR MONUMENT LOCATION

(Use reverse side if necessary)

Show info such as: History of corner, with reference to Vol. and pg, dates, surveyor; exact description of monument replaced; if location computed, by taped or EDM traverse; landowner remarks, etc.

Ran EDM/transit traverse around Sections 9 and 16 to determine search areas for investigation.

Did not excavate because search area falls within the construction limits of S.T.H. 82, and no corner other than post is of record.

Set corner by double proportionate measure between adjacent Section corners.

Set 6-9-76.

SEE TIE SHEET WOORSTERY 15 NOV. 01



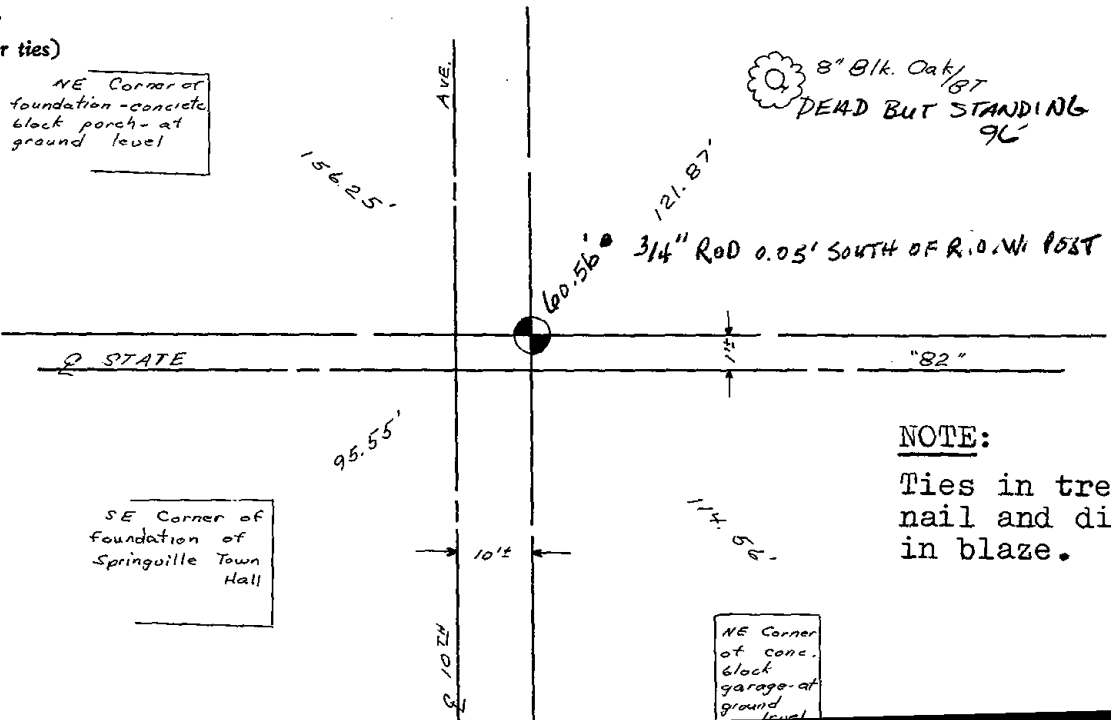
CERTIFIED CORRECT:

Dale C Hagen  
Registered Land Surveyor

DATE: 9-20-76

TIE SKETCH

(Show at least four ties)



NOTE:

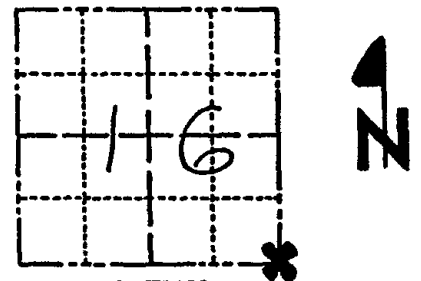
Ties in trees to nail and disc in blaze.

ADAMS COUNTY

Survey Monument Record

TYPE OF MONUMENT: Harrison  
STATE PLANE COORDINATES: N \_\_\_\_\_  
E \_\_\_\_\_  
ELEVATION — M.S.L. DATUM: \_\_\_\_\_  
THETA ANGLE: \_\_\_\_\_  
FIELD BOOK: 37 PAGE 45

CORNER NO. 1033  
SECTION 16  
TOWN 15  
RANGE 6



LOCATION  
(Indicated by 'X')

SEAL:



BASIS FOR MONUMENT LOCATION

(Use reverse side if necessary)

Show info such as: History of corner, with reference to Vol. and pg. dates, surveyor; exact description of monument replaced; if location computed, by taped or EDM traverse; landowner remarks, etc.

Ran EDM/transit traverse around Sections 9 and 16 to determine search areas for investigation.

Did not excavate because search area falls within the construction limits of S.T.H. 82, and no corner other than post is of record.

Set corner by double proportionate measure between adjacent Section corners.

Set 6-9-76.

10-3-91 New Tie *M. Carlson*

CERTIFIED CORRECT:  
*Dale C. Hagen*  
Registered Land Surveyor  
DATE: 9-20-76

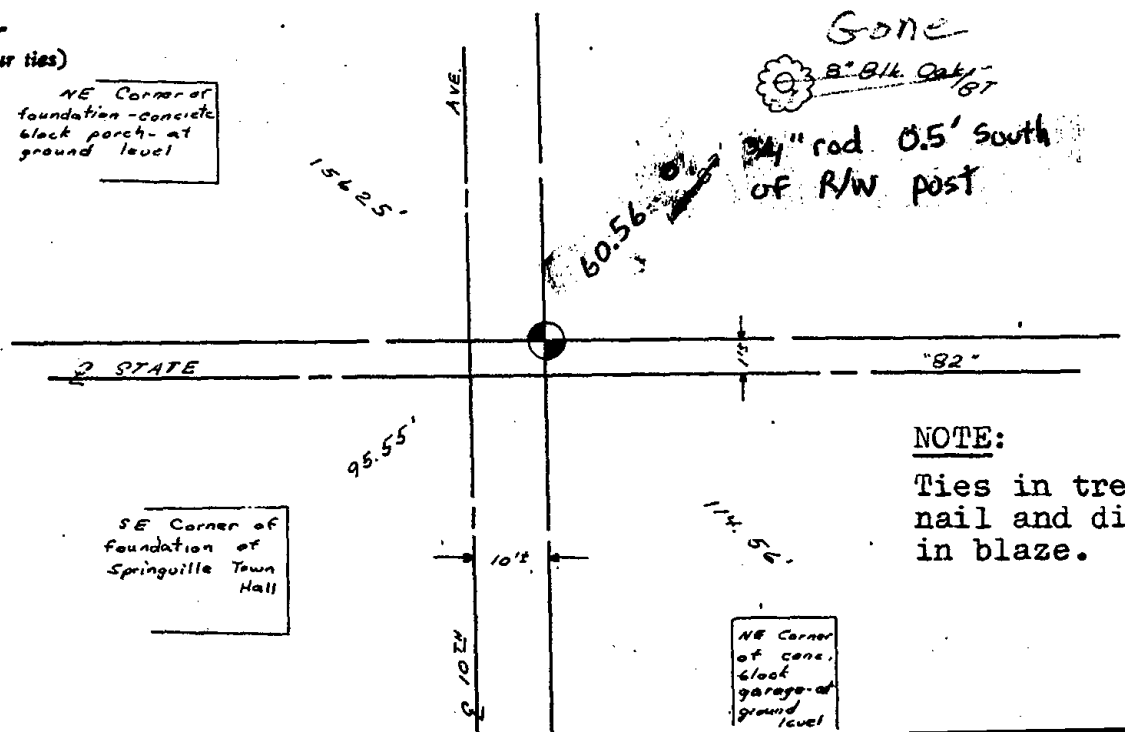
TIE SKETCH

(Show at least four ties)

NE Corner of foundation - concrete block porch - at ground level

SE Corner of foundation of Springville Town Hall

NE Corner of conc. block garage - at ground level



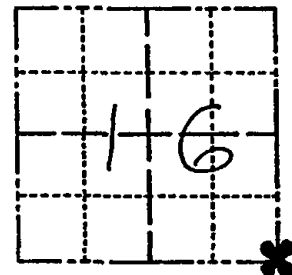
NOTE:  
Ties in trees to nail and disc in blaze.

**ADAMS COUNTY**

**Survey Monument Record**

TYPE OF MONUMENT: Harrison  
STATE PLANE COORDINATES: N \_\_\_\_\_  
E \_\_\_\_\_  
ELEVATION — M.S.L. DATUM: \_\_\_\_\_  
THETA ANGLE: \_\_\_\_\_  
FIELD BOOK: 37 PAGE 45

CORNER NO. 1033  
SECTION 16  
TOWN 15  
RANGE 6



LOCATION  
(Indicated by 'X')

SEAL:

**BASIS FOR MONUMENT LOCATION**

(Use reverse side if necessary)

Show info such as: History of corner, with reference to Vol. and pg, dates, surveyor; exact description of monument replaced; if location computed, by taped or EDM traverse; landowner remarks, etc.

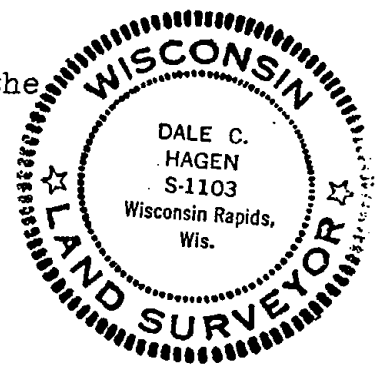
Ran EDM/transit traverse around Sections 9 and 16 to determine search areas for investigation.

Did not excavate because search area falls within the construction limits of S.T.H. 82, and no corner other than post is of record.

Set corner by double proportionate measure between adjacent Section corners.

Set 6-9-76.

10-3-91 New Tie *M. Carlson*  
8-22-96 TIES OK *J. Hiley*



CERTIFIED CORRECT:

*Dale C Hagen*  
Registered Land Surveyor  
DATE: 9-20-76

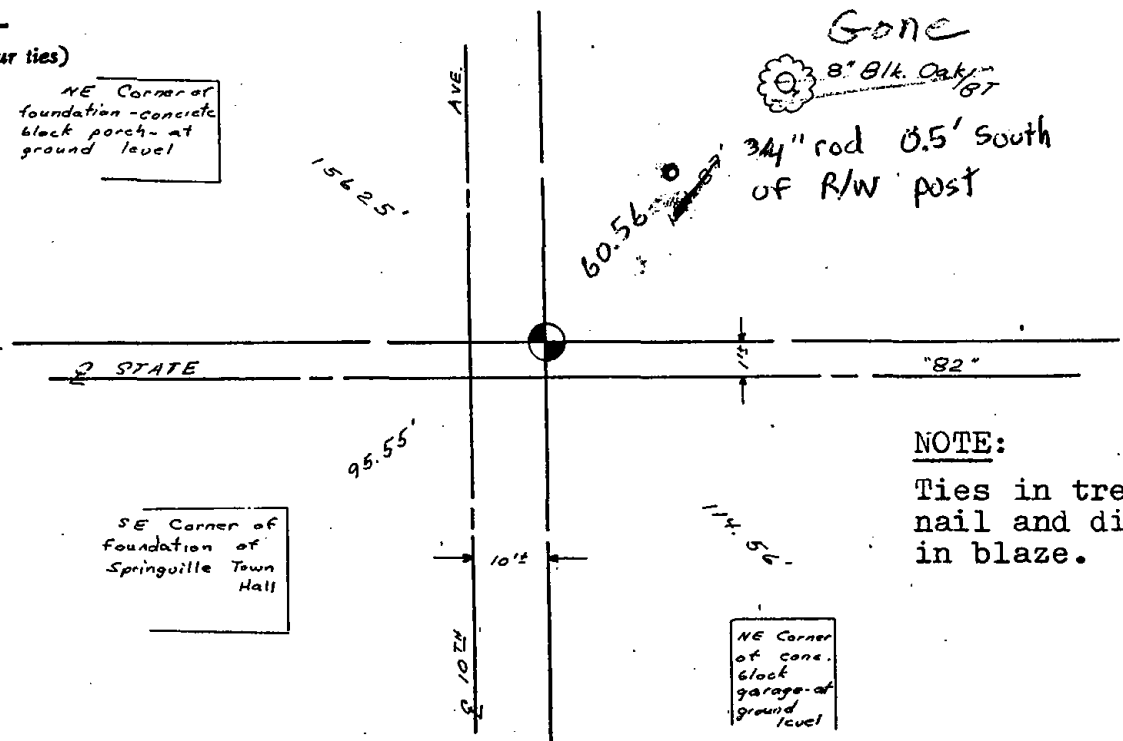
**TIE SKETCH**

(Show at least four ties)

NE Corner of foundation - concrete block porch - at ground level

SE Corner of foundation of Springville Town Hall

NE Corner of concrete block garage - at ground level



**NOTE:**

Ties in trees to nail and disc in blaze.