

U.S. PUBLIC LAND SURVEY MONUMENT RECORD

ADAMS COUNTY



Land Surveying
 Landscape Architecture
 Engineering
Jordan G. Brost, PLS #3009
 4941 Kirschling Court
 Stevens Point, WI 54481
 715.344.9999(PH) 715.344.9922(FX)

This record shall show the location of the corner and shall include all of the following nine elements (a through i)

TYPE OF MONUMENT: BERNTSEN SURVEY MARKER NAIL

ADAMS COUNTY COORDINATES: N: 148904.427
 E: 547060.534

ELEVATION: -M.S.L. DATUM

ELLIP. HEIGHT: _____

LATITUDE: _____

LONGITUDE: _____

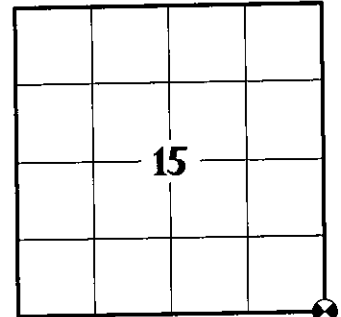
FOUND
 SET
 RE-SET
 RE-TIED

ORDER OF ACCURACY: FIRST _____
 SECOND _____
 THIRD X
 FOURTH _____
 UNKNOWN _____
 OTHER _____

REFERENCE DATUM: NAD 83 (2011)

(a) Identify the corner by reference to the U.S. public land survey system.

CORNER NO. 69
 ROMPORTOL ID: 41506150000
 SECTION 15
 TOWNSHIP 15 NORTH
 RANGE 06 EAST



SECTION IDENTIFICATION

(b) Describe any record evidence, monument evidence, occupational evidence, testimonial evidence, or any other material evidence considered by the professional land surveyor, and whether the monument was found or placed

ANTHONY B. KIEDROWSKI, PLS 878 FOUND STONE AT THE NW CORNER OF SECTION 14 AND CHARRED STAKE AT W1/4 CORNER OF SECTION 14. TOOK THAT LINE AND DOUBLED AND EXTENDED IT TO THIS POINT. SET HARRISON MONUMENT. PER PREVIOUS TIE SHEET DATED DECEMBER 27, 1973.

ERNEST WOORSTER, PLS 1741 LOCATED AND TIED PRIOR TO RECONSTRUCTION OF THE HIGHWAY. NEW TIES PROVIDED. TIES ARE AL. DISC SET IN CONCRETE. DISC STATES WISCONSIN DEPARTMENT OF TRANSPORTATION DO NOT DISTURB. PER PREVIOUS TIE SHEET DATED NOVEMBER 15, 2001.

TIMOTHY G. RUTZEN, JR., PLS 2994 FOUND A HARRISON MONUMENT 6" BELOW THE ROAD SURFACE, 3 TIES AND 1 R/W IRON. THE MONUMENT AGREES WITH THE EXISTING TIES. ACCEPTED THE HARRISON MONUMENT AS THE CORNER LOCATION AND RE-MEASURED THE EXISTING TIES AND R/W IRON. PER PREVIOUS TIE SHEET DATED AUGUST 10, 2018.

ON APRIL 6, 2021, I FOUND A HARRISON MONUMENT AT THE CORNER LOCATION AND FOUR EXISTING WITNESS MONUMENTS AS SHOWN ON PREVIOUS TIE SHEET DATED AUGUST 10, 2018. EXISTING MONUMENT CHECKED WELL WITH WITNESS MONUMENTS AND WAS ACCEPTED AS THE CORNER LOCATION. MONUMENT AND WITNESSES WERE TIED BEFORE RECONSTRUCTION OF STATE HWY "82".

ON OCTOBER 27, 2021, AFTER CONSTRUCTION WAS COMPLETE, I SET A BERNTSEN SURVEY NAIL IN CONCRETE AT THE PREVIOUS SURVEYED LOCATION AND VERIFIED ALL WITNESS MONUMENTS AS PREVIOUSLY FOUND, WHICH WERE IN GOOD CONDITION.

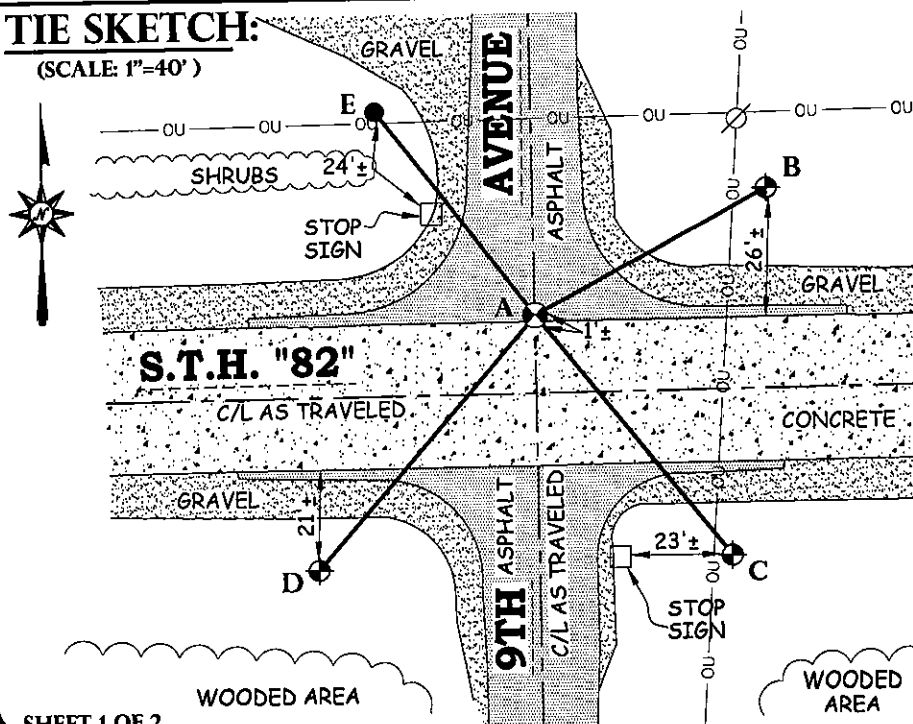
(c) In the plan view drawing below, provide reference ties to at least 4 witness monuments. Witness monuments shall be concrete, natural stone, iron, bearing trees or other equally durable material, except wood other than bearing trees.

(d) Show a plan view drawing depicting the relevant monuments and reference ties which is sufficient in detail to enable accurate relocation of the corner monument if the corner monument is disturbed.

DRAFTED BY **JORDAN G. BROST**
 DRAWN BY **TRAVIS PLANTICO**

TIE SKETCH:

(SCALE: 1"=40')



LEGEND AND NOTES:

- SET BERNTSEN SURVEY MARKER NAIL
- DOT ALUMINUM CAP MONUMENT IN CONCRETE FOUND
- 3/4" IRON BAR FOUND
- OVERHEAD UTILITIES LINE
- POWER POLE

A-B	(N 61°47'29" E) N 61°47'19" E	54.74'
A-C	(S 38°48'14" E) S 38°48'43" E	(65.03') 65.06'
A-D	(S 40°29'07" W) S 40°28'28" W	69.71'
A-E	(N 37°44'58" W) N 37°42'14" W	(54.18') 54.20'

COORDINATES ARE REFERENCED TO THE ADAMS COUNTY COORDINATE SYSTEM AS DEVELOPED BY THE WISCONSIN DEPARTMENT OF TRANSPORTATION.

U.S. PUBLIC LAND SURVEY MONUMENT RECORD
ADAMS COUNTY



Land Surveying
Landscape Architecture
Engineering
Jordan G. Brost, PLS #3009
4941 Kirsching Court
Stevens Point, WI 54481
715.344.9999 (Ph) 715.344.9922 (Fax)

(e) A description of any material discrepancy between the location of the corner monument as restored and the monument location of that corner as previously established.

(a) Identify the corner by reference to the U.S. public land survey system.

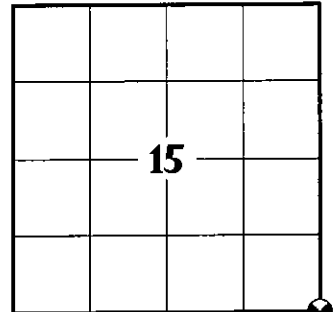
CORNER NO. 69
ROMPORTOL ID: 41506150000
SECTION 15
TOWNSHIP 15 NORTH
RANGE 06 EAST

(f) Was the corner restored through acceptance of (1) an obliterated evidence location, or (2) a found perpetuated location.

FOUND PERPETUATED LOCATION

(g & h) Was the corner reestablished through lost corner proportionate methods? If so, show the method, including the directions and distances to other public land survey corners used as evidence or used for proportioning in determining the corner location.

NO



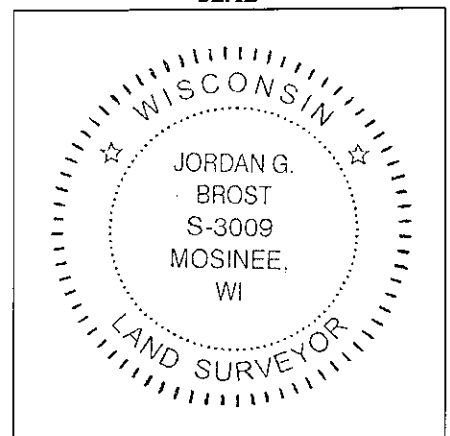
SECTION IDENTIFICATION

(i) I, Jordan G. Brost, hereby certify that the corner location shown on this record was determined by me or under my direction and control and that this U.S. Public Land Survey Monument Record is correct and complete to the best of my knowledge and belief.

Jordan G. Brost, PLS # 3009

11/24/2021
Date

SEAL



PUBLIC LAND SURVEY MONUMENT RECORD

TYPE OF MONUMENT: HARRISON
 ADAMS COUNTY COORDINATES, NAD 83 (2007)

N. 148904.449

E. 547060.447

ELEVATION- DATUM

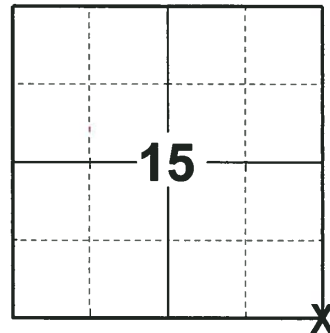
FIELD WORK DATE: 06/27/2018

BASIS FOR MONUMENT LOCATION

1973 - PLS 878 FOUND STONE AT THE NW CORNER OF SECTION 14 AND A CHARRED STAKE AT THE W1/4 CORNER OF SECTION 14. TOOK THAT LINE AND DOUBLED AND EXTENDED IT TO THIS POINT TO ESTABLISH THE CORNER POSITION. SET A HARRISON MONUMENT AND TIED OUT.

2001 - PLS 1741 MONUMENT WAS LOCATED AND TIED PRIOR TO RECONSTRUCTION OF THE HIGHWAY. NEW TIES PROVIDED. TIES ARE ALUMINUM DISC SET IN CONCRETE. DISC STATES WISCONSIN DEPARTMENT OF TRANSPORTATION DO NOT DISTURB. SET A SURVEY NAIL AT THE CORNER LOCATION.

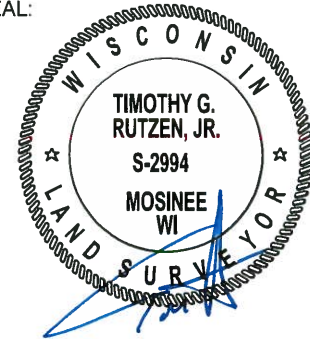
2018 - PLS 2994 FOUND A HARRISON MONUMENT 6" BELOW THE ROAD SURFACE, 3 TIES AND 1 R/W IRON. THE MONUMENT AGREES WITH THE EXISTING TIES. ACCEPTED THE HARRISON MONUMENT AS THE CORNER LOCATION AND RE-MEASURED TO THE EXISTING TIES AND R/W IRON.



LOCATION

(INDICATE CORNER BY "X")

SEAL:



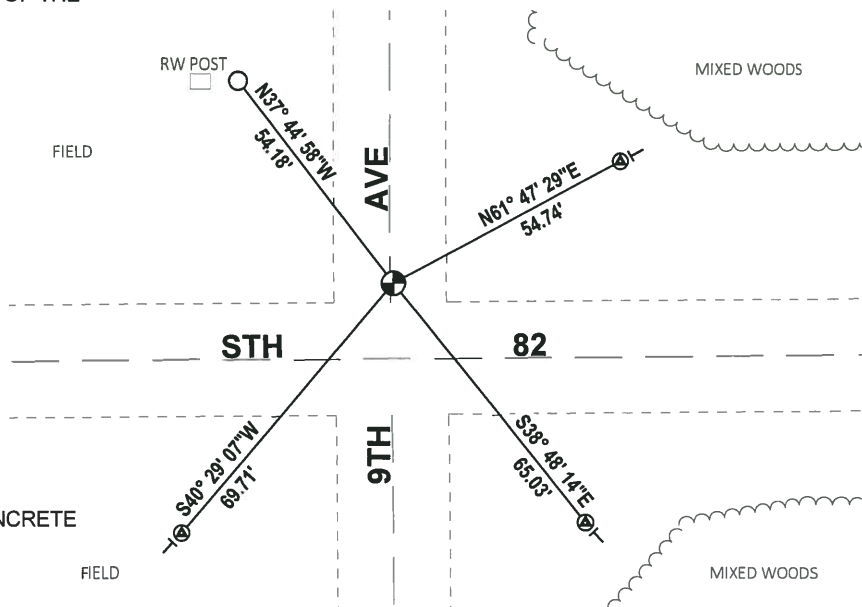
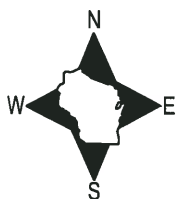
DATA SHOWN HERE ON THIS TIE SHEET IS CORRECT AND COMPLETE TO THE BEST OF MY KNOWLEDGE AND BELIEF.

PROFESSIONAL LAND SURVEYOR

DATE 8-10-18

- TIE SKETCH

NOTE: THE CORNER FALLS 0.5'± EAST OF THE CENTERLINE OF 9TH AVE AND 16'± NORTH OF THE CENTERLINE OF STH 82.

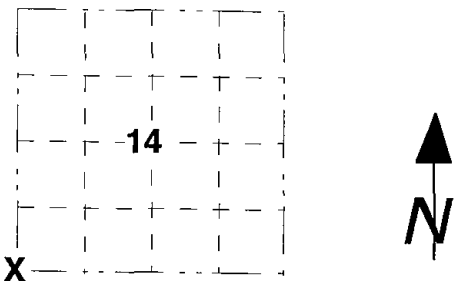


- FOUND 3/4" IRON ROD
- ⊗ FOUND WISDOT ALUMINUM CAP IN CONCRETE
- ⊕ FOUND HARRISON MONUMENT
- ⊥ VINYL "T" POST

Government Land Corner Certificate

CORNER NO. 69
 SECTION 14
 TOWN T15N
 RANGE R6E

ADAMS County
 TYPE OF MONUMENT HARRISON
 STATE PLANE COORDINATES: N. _____
 E. _____
 ELEVATION _____ M.S.L. DATUM: _____
 THETA ANGLE: _____
 FIELD BOOK: _____ PAGE: _____
 DRAWN BY: E.W.



BASIS FOR MONUMENT LOCATION

Show info such as; History of corner, with reference to Vol. and pg., dates, surveyor, exact description of monument replaced; if location computed by taped or EDM traverse; landowner remarks, etc. (use reverse side if necessary).

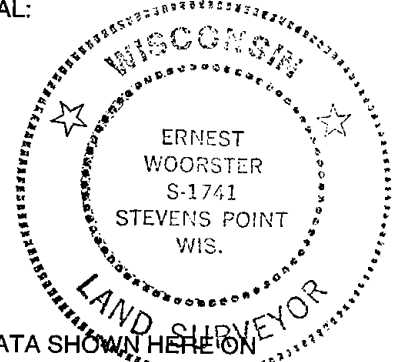
MONUMENT LOCATED AND TIED PRIOR TO RECONSTRUCTION OF THE HIGHWAY. NEW TIES PROVIDED. TIES ARE AL. DISC SET IN CONCRETE. DISC STATES WISCONSIN DEPARTMENT OF TRANSPORTATION DO NOT DISTURB.

*ALL OK, - 4-27-06, JG-ELW
 " " 1-10-11 GR-SS*

LOCATION

(Indicated by 'X')

SEAL:



DATA SHOWN HERE ON CERTIFIED CORRECT.

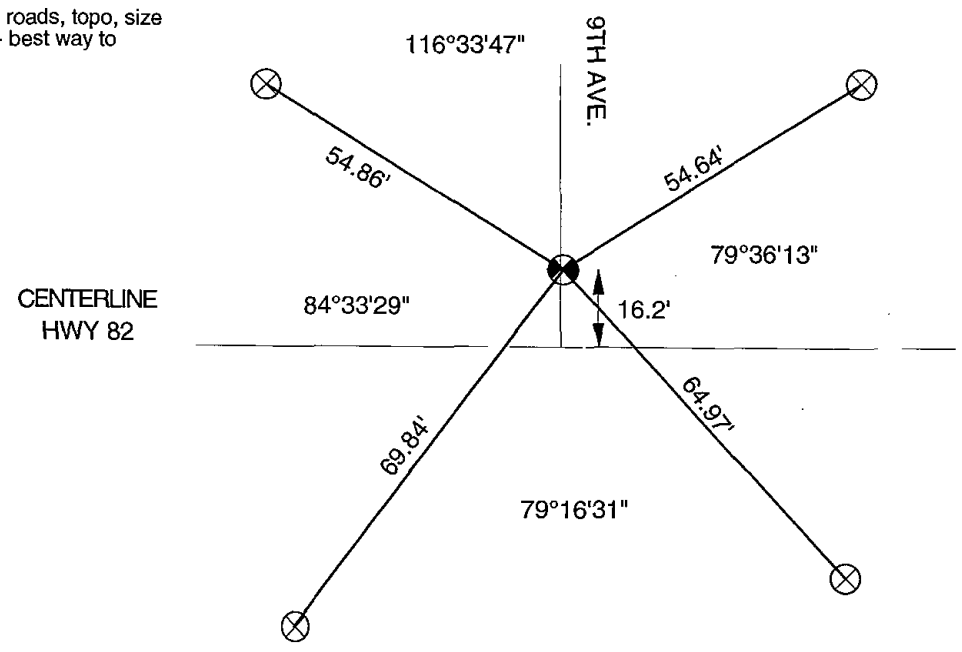
[Handwritten Signature]

Registered Land Surveyor

DATE 15 Nov 01

TIE SKETCH

Show at least four ties; also fence lines, roads, topo, size and type of witness trees' and if off road- best way to arrive at corner.

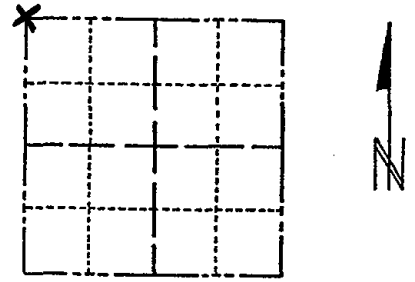


ADAMS COUNTY

Survey Monument Record

TYPE OF MONUMENT: 30" HARRISON
 STATE PLANE COORDINATES: N _____
 E _____
 ELEVATION — M.S.L. DATUM: _____
 THETA ANGLE: _____
 FIELD BOOK: 110 PAGE 31

CORNER NO. 241
 SECTION 23
 TOWN 15
 RANGE 6



LOCATION
(Indicated by 'X')

SEAL:



BASIS FOR MONUMENT LOCATION

(Use reverse side if necessary)

Show info such as: History of corner, with reference to Vol. and pg, dates, surveyor; exact description of monument replaced; if location computed, by taped or EDM traverse; landowner remarks, etc.

Found stone at the NW corner of section 14 and charred stake at W $\frac{1}{4}$ corner of section 14. Took that line and doubled and extended it to this point.

CORNER O.K. 9-25-76 RW-SS

MAINTENANCE RECORD

Date	Remarks
10-12-81	AC TH MON + TICS O.K
1-21-86	GS-S OK
1-14-91	KZJG ALL OK
2-7-96	CP-JG OK
1-29-01	JG-MH OK

SEE TIE SHEET WOODSTER 15 NOV. 01

CERTIFIED CORRECT:

Anthony B. Kiedrowski
 Registered Land Surveyor

DATE: 12/07/93

TIE SKETCH

(Show at least four ties)

