



**U.S. PUBLIC LAND SURVEY MONUMENT RECORD**  
**ADAMS COUNTY**



Land Surveying  
Landscape Architecture  
Engineering  
**Jordan G. Brost, PLS #3009**  
4941 Kirschling Court  
Stevens Point, WI 54481  
715.344.9999(Fh) 715.344.5922(Fx)

(e) A description of any material discrepancy between the location of the corner monument as restored and the monument location of that corner as previously established.

(a) Identify the corner by reference to the U.S. public land survey system.

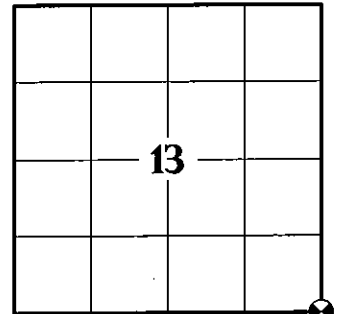
CORNER NO. 73  
ROMPORTOL ID: 41506130000  
SECTION 13  
TOWNSHIP 15 NORTH  
RANGE 06 EAST

(f) Was the corner restored through acceptance of (1) an obliterated evidence location, or (2) a found perpetuated location.

**FOUND PERPETUATED LOCATION**

(g & h) Was the corner reestablished through lost corner proportionate methods? If so, show the method, including the directions and distances to other public land survey corners used as evidence or used for proportioning in determining the corner location.

**NO**



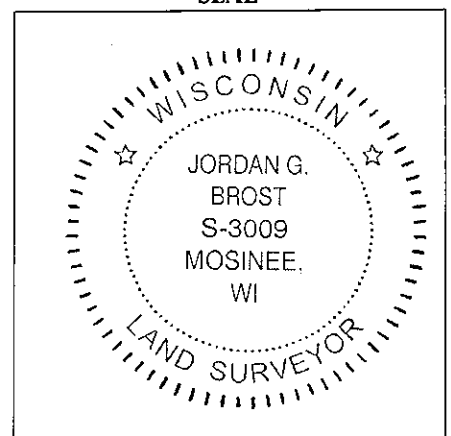
SECTION IDENTIFICATION

(i) I, *Jordan G. Brost*, hereby certify that the corner location shown on this record was determined by me or under my direction and control and that this U.S. Public Land Survey Monument Record is correct and complete to the best of my knowledge and belief.

Jordan G. Brost, PLS # 3009

11/24/2021  
Date

SEAL



13 SECTION 15 TOWN 06 RANGE

# ADAMS COUNTY

COUNTY CORNER NO: 73  
ROMPORTOL ID: 41506130000

## PUBLIC LAND SURVEY MONUMENT RECORD

TYPE OF MONUMENT: HARRISON  
ADAMS COUNTY COORDINATES, NAD 83 (2007)

N. 148760.459

E. 557727.264

ELEVATION-      DATUM     

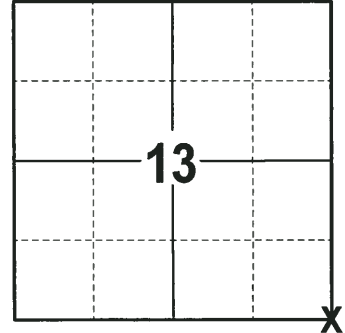
FIELD WORK DATE: 09/18/2017

### BASIS FOR MONUMENT LOCATION

1972 - PLS 981 SET A 30" HARRISON MONUMENT AT THE CORNER LOCATION AND TIED OUT.

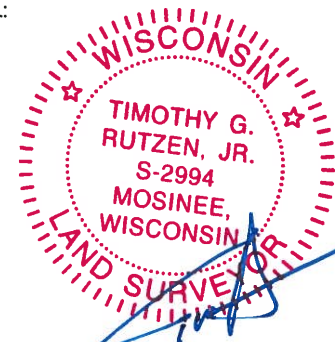
2001 - PLS 1741 MONUMENT LOCATED AND TIED PRIOR TO RECONSTRUCTION OF THE HIGHWAY. NEW TIES WERE PROVIDED AND THE TIES ARE ALUMINUM DISC SET IN CONCRETE. DISC STATES WISCONSIN DEPARTMENT OF TRANSPORTATION DO NOT DISTURB. SET A HARRISON MONUMENT AT THE CORNER LOCATION POST CONSTRUCTION AND TIED OUT.

2017 - PLS 2994 FOUND A HARRISON MONUMENT 6" BELOW THE ROAD SURFACE IN A 12" MANHOLE AND 3 TIES. THE MONUMENT AGREES WITH THE EXISTING TIES. ACCEPTED THE HARRISON MONUMENT AS THE CORNER LOCATION, SET 1 NEW TIE AND RE-MEASURED THE TIES.



**LOCATION**  
(INDICATE CORNER BY "X")

SEAL:



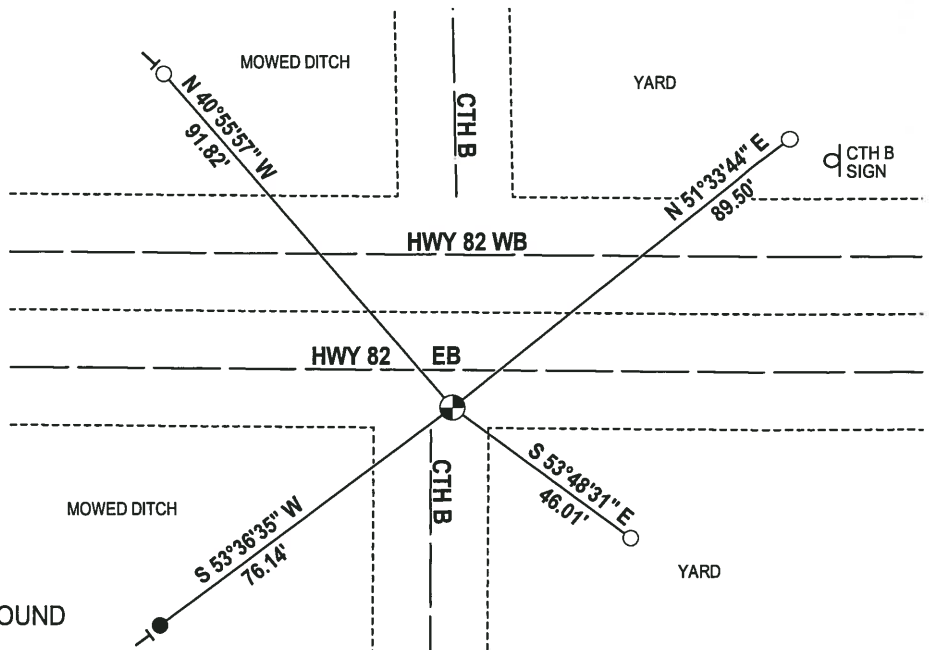
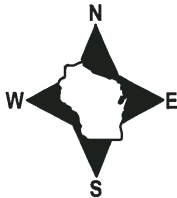
DATA SHOWN HERE ON THIS TIE SHEET IS CORRECT AND COMPLETE TO THE BEST OF MY KNOWLEDGE AND BELIEF.

PROFESSIONAL LAND SURVEYOR

DATE 11-15-17

### - TIE SKETCH -

NOTE: THE CORNER FALLS 8± SOUTH OF THE CENTERLINE OF HWY 82 EB AND 5± EAST OF THE CENTERLINE OF CTH B.

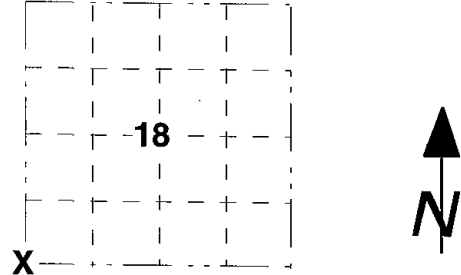


- 3/4" x 18" IRON REBAR SET, 1.50#/FT
- WISDOT ALUMINUM CAP IN CONCRETE FOUND
- ⊕ HARRISON FOUND
- ⊖ VINYL "T" POST

**Government Land Corner Certificate**

ADAMS County  
 TYPE OF MONUMENT HARRISON  
 STATE PLANE COORDINATES: N. \_\_\_\_\_  
 E. \_\_\_\_\_  
 ELEVATION \_\_\_\_\_ M.S.L. DATUM: \_\_\_\_\_  
 THETA ANGLE: \_\_\_\_\_  
 FIELD BOOK: \_\_\_\_\_ PAGE: \_\_\_\_\_  
 DRAWN BY: E.W.

CORNER NO. 73  
 SECTION 18  
 TOWN T15N  
 RANGE R7E



**BASIS FOR MONUMENT LOCATION**

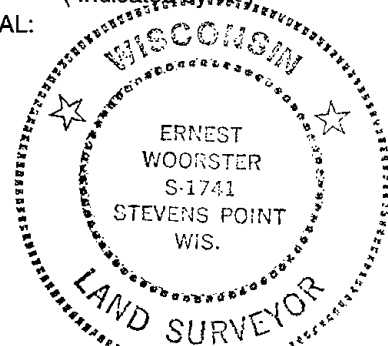
Show info such as; History of corner, with reference to Vol. and pg., dates, surveyor, exact description of monument replaced; if location computed by taped or EDM traverse; landowner remarks, etc. (use reverse side if necessary).

MONUMENT LOCATED AND TIED PRIOR TO RECONSTRUCTION OF THE HIGHWAY. NEW TIES PROVIDED. TIES ARE AL. DISC SET IN CONCRETE. DISC STATES WISCONSIN DEPARTMENT OF TRANSPORTATION DO NOT DISTURB. NEW MONUMENT SET.

OK 01-10-11 GR-SS

LOCATION  
 (Indicated by 'X')

SEAL:



DATA SHOWN HEREON  
 CERTIFIED CORRECT:

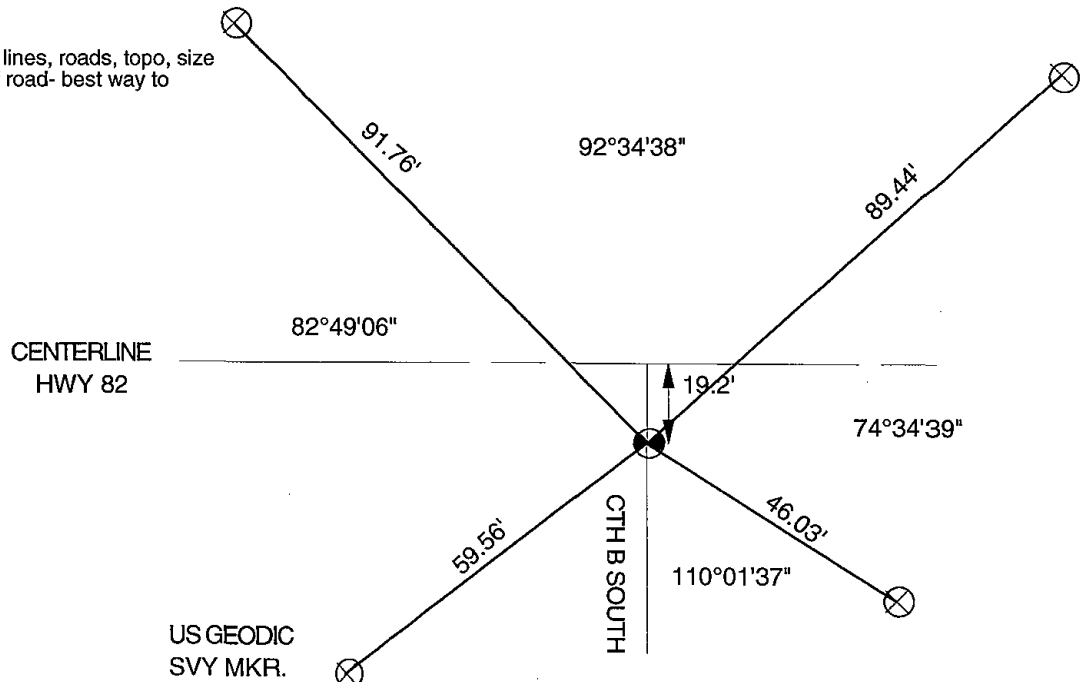
*[Handwritten signature]*

Registered Land Surveyor

DATE 15 Nov 01

**TIE SKETCH**

Show at least four ties; also fence lines, roads, topo, size and type of witness trees' and if off road- best way to arrive at corner.

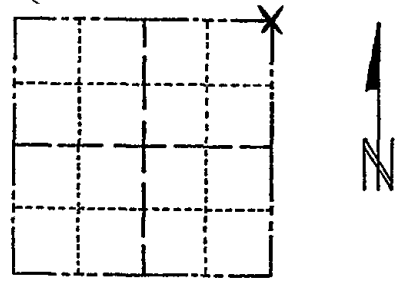


# ADAMS COUNTY

## Survey Monument Record

TYPE OF MONUMENT: "30" HARRISON  
 STATE PLANE COORDINATES: N \_\_\_\_\_  
 E \_\_\_\_\_  
 ELEVATION — M.S.L. DATUM: \_\_\_\_\_  
 THETA ANGLE: \_\_\_\_\_  
 FIELD BOOK: 106 PAGE \_\_\_\_\_

CORNER NO. 114  
 SECTION 24  
 TOWN 15  
 RANGE 6



LOCATION  
(Indicated by 'X')

SEAL: \_\_\_\_\_

### BASIS FOR MONUMENT LOCATION

(Use reverse side if necessary)

Show info such as: History of corner, with reference to Vol. and pg. dates, surveyor; exact description of monument replaced; if location computed, by taped or EDM traverse; landowner remarks, etc.

Set monument

May 4, 1972

Sam T. Mullen R.L.S. S-981

CORNER O.K. 4-23-76 RN-SS  
 MAINTENANCE RECORD

Date	Init.	Remarks
10-12-81	LC-TH	M.D.N + TIES OK
1-16-86	GR-SS	" OK - 1 NEW TIE
1-14-91	KZ-JG	ALL OK
12-18-90	KC	SEE ATTACHED PAGE
2-7-96	CR-JG	OK
2-15-01	JG-MH	2-GONE, 2-NEW

CERTIFIED CORRECT:

Registered Land Surveyor

DATE: \_\_\_\_\_

### TIE SKETCH

SEE TIE SHEET WOODSTER 15 NOV. 01  
 " " " "

(Show at least four ties)

