

PUBLIC LAND SURVEY MONUMENT RECORD

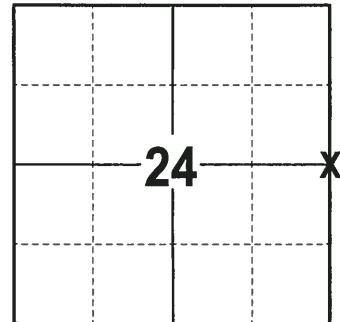
TYPE OF MONUMENT: HARRISON (BROKEN-TOP)
ADAMS COUNTY COORDINATES, NAD 83 (2007)

N. 146098.907

E. 525879.396

ELEVATION- - - DATUM - -

FIELD WORK DATE: 10/10/2017



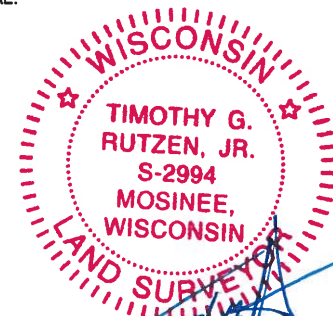
BASIS FOR MONUMENT LOCATION

2013 - PLS 1452 FOUND HARRISON MONUMENT BELOW THE SURFACE AT THE CORNER LOCATION AND CHECKED FROM A TIE SHEET FROM DEC 2, 1975. RE-SET A BERNTSEN SURVEY NAIL AT THE CORNER LOCATION ABOVE HARRISON MONUMENT AND RE-TIED.

2017 - PLS 2994 FOUND A SURVEY NAIL IN THE ROAD SURFACE, 1 PROPERTY IRON AND 4 TIES. REMOVED THE SURVEY NAIL TO SEARCH FOR A HARRISON MONUMENT BELOW. FOUND THE HARRISON MONUMENT WITH A BROKEN-TOP 12" BELOW THE ROAD SURFACE. THE MONUMENT AGREES WITH THE TIES. ACCEPTED THE HARRISON MONUMENT AS THE CORNER LOCATION AND RE-MEASURED TO THE EXISTING PROPERTY IRON AND TIES.

LOCATION
(INDICATE CORNER BY "X")

SEAL:



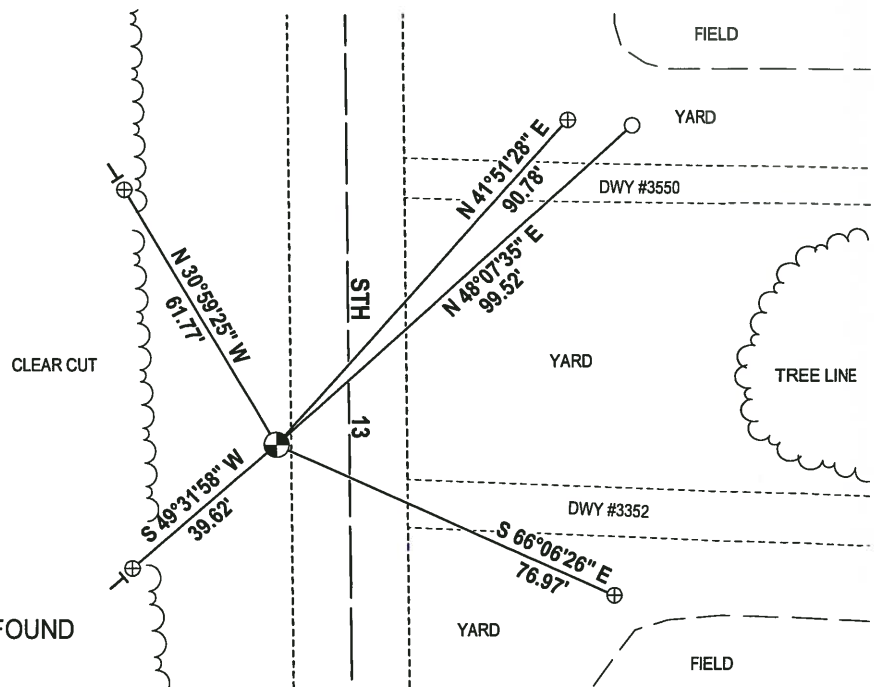
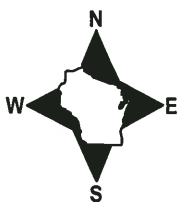
DATA SHOWN HERE ON THIS TIE SHEET IS CORRECT AND COMPLETE TO THE BEST OF MY KNOWLEDGE AND BELIEF.

PROFESSIONAL LAND SURVEYOR

DATE 12-4-17

- TIE SKETCH -

NOTE: THE CORNER FALLS 15± WEST OF THE CENTERLINE OF STH 13.



- 3/4" IRON ROD FOUND
- ⊕ WIS DOT ALUMINUM BERNTSEN MONUMENT FOUND
- ⊙ HARRISON (BROKEN-TOP) FOUND
- └ VINYL "T" POST

