

20
SECTION

15
TOWN

06
RANGE

ADAMS COUNTY

COUNTY CORNER NO.: 76

ROMPORTOL ID: 41506202000

PUBLIC LAND SURVEY MONUMENT RECORD

TYPE OF MONUMENT: HARRISON
ADAMS COUNTY COORDINATES, NAD 83 (2007)

N. 146124.658

E. 536569.675

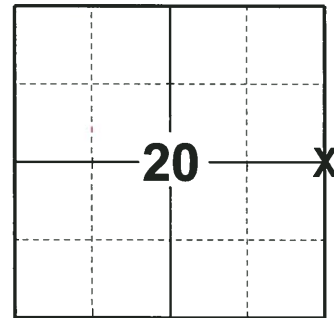
ELEVATION- DATUM

FIELD WORK DATE: 07/03/2018

BASIS FOR MONUMENT LOCATION

1974 - PLS 1103 RAN EDM/TRANSIT TRAVERSE OF SECTIONS 20 AND 29-15-6E TO DETERMINE SEARCH AREAS FOR THE CORNERS IN THIS AREA. EXCAVATED AREA WITH A BACKHOE AND FOUND NO EVIDENCE OF THE CORNER. CALCULATED THE CORNER POSITION EQUIDISTANT AND ON LINE BETWEEN ADJACENT SECTION CORNERS. SET A HARRISON MONUMENT AND TIED OUT.

2018 - PLS 2994 FOUND A HARRISON MONUMENT 12" BELOW THE SURFACE AND 1 TIE. THE MONUMENT AGREES WITH THE EXISTING TIE. ACCEPTED THE HARRISON MONUMENT AS THE CORNER LOCATION. SET 3 NEW TIES AND MEASURED TO THE TIES.



LOCATION
(INDICATE CORNER BY "X")

SEAL:



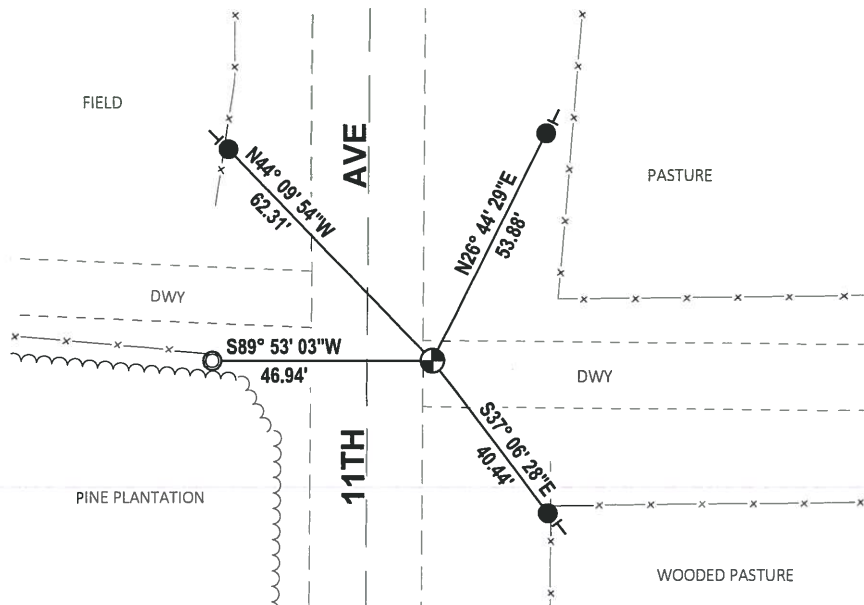
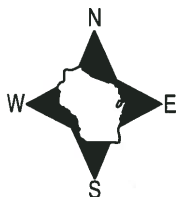
DATA SHOWN HERE ON THIS TIE SHEET IS CORRECT AND COMPLETE TO THE BEST OF MY KNOWLEDGE AND BELIEF.

PROFESSIONAL LAND SURVEYOR

DATE 8-10-18

TIE SKETCH

NOTE: THE CORNER FALLS 14'± EAST OF THE CENTERLINE OF 11TH AVE.



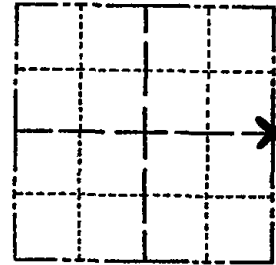
- SET 3/4" x 18" IRON REBAR, 1.50#/FT
- FOUND 1-1/4" O.D. IRON PIPE
- ⊕ FOUND HARRISON MONUMENT
- VINYL "T" POST

ADAMS COUNTY

Survey Monument Record

TYPE OF MONUMENT: 30" Harrison standard
 STATE PLANE COORDINATES: N _____
 E _____
 ELEVATION — M.S.L. DATUM: _____
 THETA ANGLE: _____
 FIELD BOOK: _____ PAGE _____

CORNER NO. 628
 SECTION 20
 TOWN 15
 RANGE 6



BASIS FOR MONUMENT LOCATION

(Use reverse side if necessary)

Show info such as: History of corner, with reference to Vol. and pg. dates, surveyor; exact description of monument replaced; if location computed, by taped or EDM traverse; landowner remarks, etc.

Ran EDM/transit traverse of Section 20 and 29-15-6E to determine search areas for the corners in this area. This corner was set equidistant and on line between adjacent section corners.

Excavated area with backhoe-found nothing.

CORNER O.K. 10-14-76 JS-SS

Date	Init.	Remarks
11-10-81	TH-DW	MON + TIES O.K.
1-16-86	GR-SS	3 GONE - 2 NEW TIES <small>MON: 8" DEEP</small>
3-4-90	SEE	CARLSON NEXT PAGE
1-14-11	SS	3 NEW TIES

LOCATION
(Indicated by 'X')

SEAL:



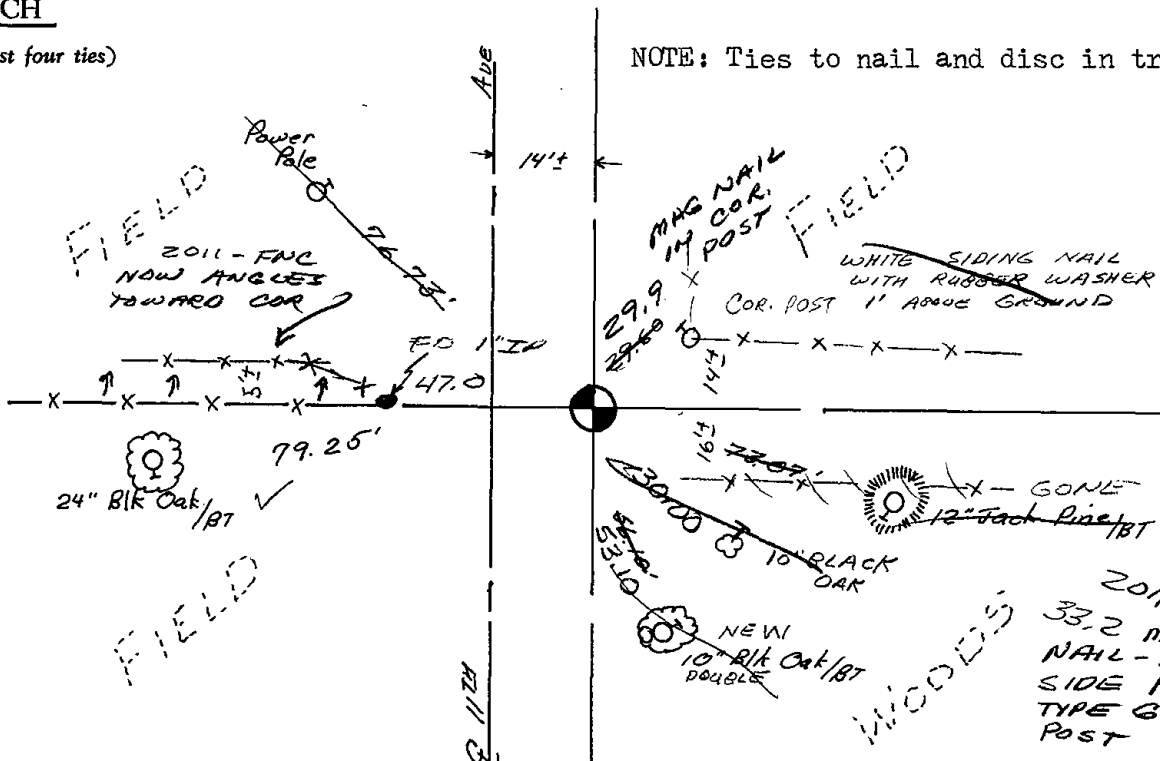
CERTIFIED CORRECT:

Dale C. Hagen
Registered Land Surveyor

DATE: 12/30/74

TIE SKETCH

(Show at least four ties)



NOTE: Ties to nail and disc in trees.

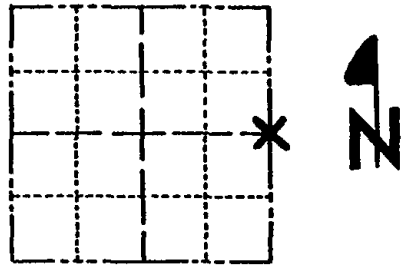


ADAMS COUNTY

Survey Monument Record

TYPE OF MONUMENT: 30" Harrison standard
 STATE PLANE COORDINATES: N _____
 E _____
 ELEVATION — M.S.L. DATUM: _____
 THETA ANGLE: _____
 FIELD BOOK: _____ PAGE _____

CORNER NO. _____
 SECTION 20
 TOWN 15
 RANGE 6



LOCATION
(Indicated by 'X')

SEAL:

BASIS FOR MONUMENT LOCATION

(Use reverse side if necessary)

Show info such as: History of corner, with reference to Vol. and pg. dates, surveyor; exact description of monument replaced; if location computed, by taped or EDM traverse; landowner remarks, etc.

Ran EDM/transit traverse of Section 20 and 29-15-6E to determine search areas for the corners in this area. This corner was set equidistant and on line between adjacent section corners.

Excavated area with backhoe-found nothing.

CORNER HISTORY RECORD JS-55

Date	By	Remarks
11-10-81	TH-DW	MON + Ties O.K.
1-16-86	SR SS	3 GONE, 2 NEW TIES
1-31-91	KZ-SG	ALL OK
1-10-96	SG-SS	1 GONE, 1-NEW TIE
2-5-01	MA-X	ALL OK
5-12-06	JG	ALL OK



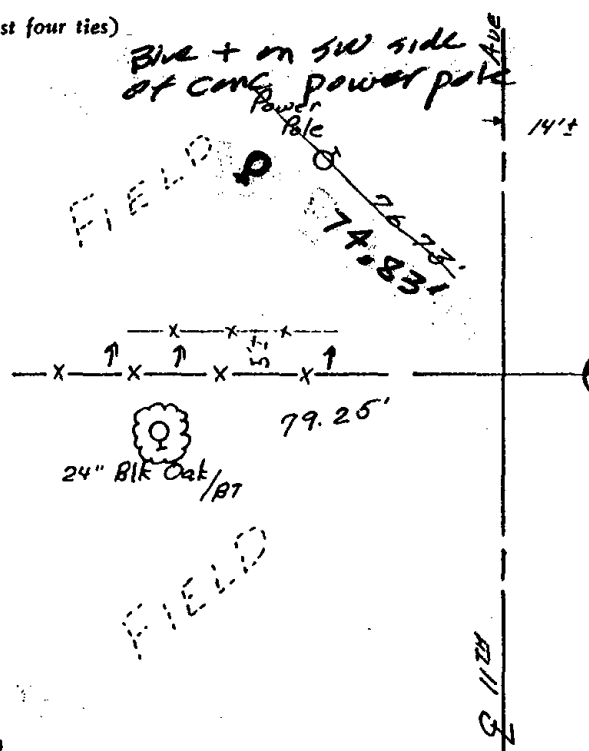
CERTIFIED CORRECT:

Dale C. Hagen
Registered Land Surveyor

DATE: 12/30/74

TIE SKETCH

(Show at least four ties)



NOTE: Ties to nail and disc in trees.

