

PUBLIC LAND SURVEY MONUMENT RECORD

TYPE OF MONUMENT: HARRISON
 ADAMS COUNTY COORDINATES, NAD 83 (2007)

N. 146213.249

E. 552330.944

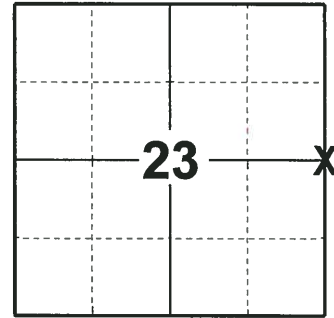
ELEVATION- _____ DATUM _____

FIELD WORK DATE: 07/02/2018

BASIS FOR MONUMENT LOCATION

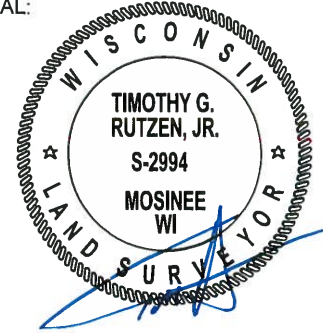
1973 - PLS 878 EXCAVATED AREA WITH A BACKHOE, FOUND NOTHING. CALCULATED THE CORNER POSITION ON LINE AND EQUIDISTANT BETWEEN SECTION CORNERS. SET A HARRISON MONUMENT AND TIED OUT. THIS CORNER MONUMENTED BY CO. SURVEYOR MULLEN IN 1971 WAS DISPUTED. AN EXTENSIVE EDM TRAVERSE OF THE FOUR SECTIONS SURROUNDING THIS CORNER AND TAKING INTO ACCOUNT ALL POSSESSION LINES AND THE STONE FOUND A 1/2 MILE SOUTH OF HERE. HARRISON BY MULLEN REMOVED AND REPLACED WITH A 2" IRON PIPE.

2018 - PLS 2994 FOUND A HARRISON MONUMENT 6" BELOW THE ROAD SURFACE AND 2 TIES. THE MONUMENT AGREES WITH THE EXISTING TIES. ACCEPTED THE HARRISON MONUMENT AS THE CORNER LOCATION. SET 2 NEW TIES AND MEASURED TO THE TIES.



LOCATION
 (INDICATE CORNER BY "X")

SEAL:



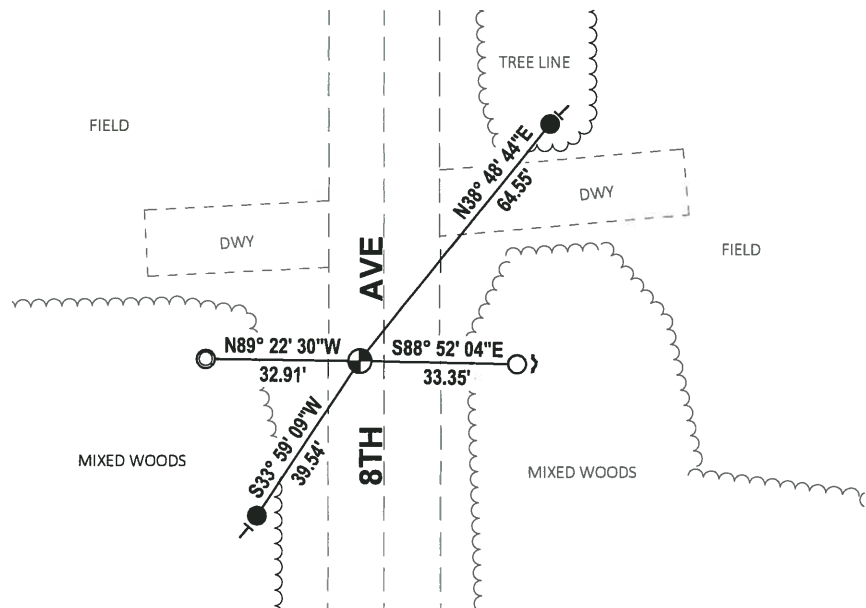
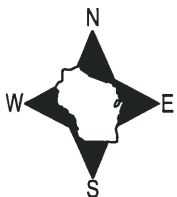
DATA SHOWN HERE ON THIS TIE SHEET IS CORRECT AND COMPLETE TO THE BEST OF MY KNOWLEDGE AND BELIEF.

PROFESSIONAL LAND SURVEYOR

DATE 8-10-18

- TIE SKETCH

NOTE: THE CORNER FALLS 5'± WEST OF THE CENTERLINE OF 8TH AVE.



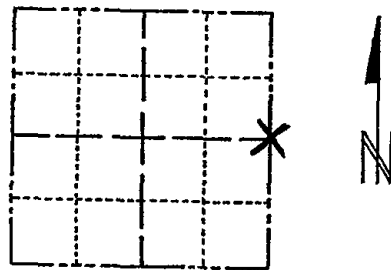
- SET 3/4" x 18" IRON REBAR, 1.50#/FT
- FOUND 3/4" IRON ROD
- FOUND 1-1/4" O.D. IRON PIPE
- ⊙ FOUND HARRISON MONUMENT
- ↙ STEEL FENCE POST
- ⊥ VINYL "T" POST

ADAMS COUNTY

Survey Monument Record

TYPE OF MONUMENT: 30" HARRISON
STATE PLANE COORDINATES: N
E
ELEVATION - M.S.L. DATUM:
THETA ANGLE:
FIELD BOOK: 109 PAGE 48

CORNER NO. 90
SECTION 23
TOWN 15
RANGE 6



LOCATION (Indicated by 'X')

BASIS FOR MONUMENT LOCATION

(Use reverse side if necessary)

Show info such as: History of corner, with reference to Vol. and pg, dates, surveyor; exact description of monument replaced; if location computed, by taped or EDM traverse; landowner remarks, etc.

Excavated area with backhoe but found nothing. Set on line equidistant between section corners.

This corner monumented by Co. Surveyor Mullen in 1971, but was disputed. An extensive EDM traverse of the four sections surrounding this corner taking into account all possession lines and the stone found 1/2 mile south of here. Harrison by Mullen removed and replaced with a 2" pipe.

SEAL:



CORNER O.K. 10-13-76 JS-SS
OK G2-SS 1-21-80

1-GONE, 1-NEW 1-31-91 KZ-JG

2-NEW, 1-16-96 JG-SS-JL

1-GONE, 4-LEFT, 5-12-06-JL

CERTIFIED CORRECT:

Anthony S. Kiedrowski
Registered Land Surveyor

DATE: 12/27/73

TIE SKETCH

FD IRONS E/W 1-10-11 SS CR

(Show at least four ties)

