

PUBLIC LAND SURVEY MONUMENT RECORD

TYPE OF MONUMENT: HARRISON
ADAMS COUNTY COORDINATES, NAD 83 (2007)

N. 143443.669

E. 541793.278

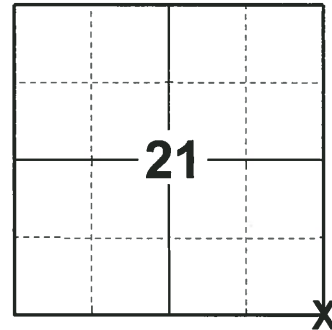
ELEVATION- - - - DATUM - - - -

FIELD WORK DATE: 07/03/2018

BASIS FOR MONUMENT LOCATION

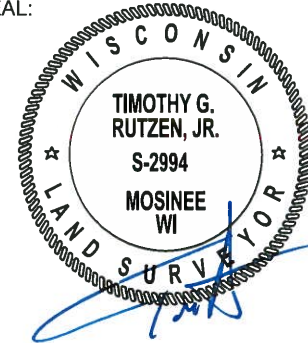
2014 -PLS 2443 THE LAST TIE SHEET ON FILE FOR THIS CORNER IS DATED SEPTEMBER 3, 1973 BY ANTHONY B. KIEDROWSKI, R.L.S. 878. KIEDROWSKI STATES HE EXCAVATED THE AREA WITH A BACKHOE AND FOUND AN OLD WOOD POST AND REPLACED THE POST WITH A 30" HARRISON MONUMENT. NUMEROUS NOTATIONS BY OTHER SURVEYORS ALSO APPEAR ON THE TIE SHEET. FOUND THE STANDARD HARRISON CAST IRON MONUMENT AS NOTED BY KIEDROWSKI AND ESTABLISHED REFERENCE TIES TO PERPETUATE THE CORNER LOCATION.

2018 - PLS 2994 FOUND A HARRISON MONUMENT 4" BELOW THE ROAD SURFACE AND 4 TIES. THE MONUMENT AGREES WITH THE EXISTING TIES. ACCEPTED THE HARRISON MONUMENT AS THE CORNER LOCATION AND RE-MEASURED TO THE EXISTING TIES.



LOCATION
(INDICATE CORNER BY "X")

SEAL:



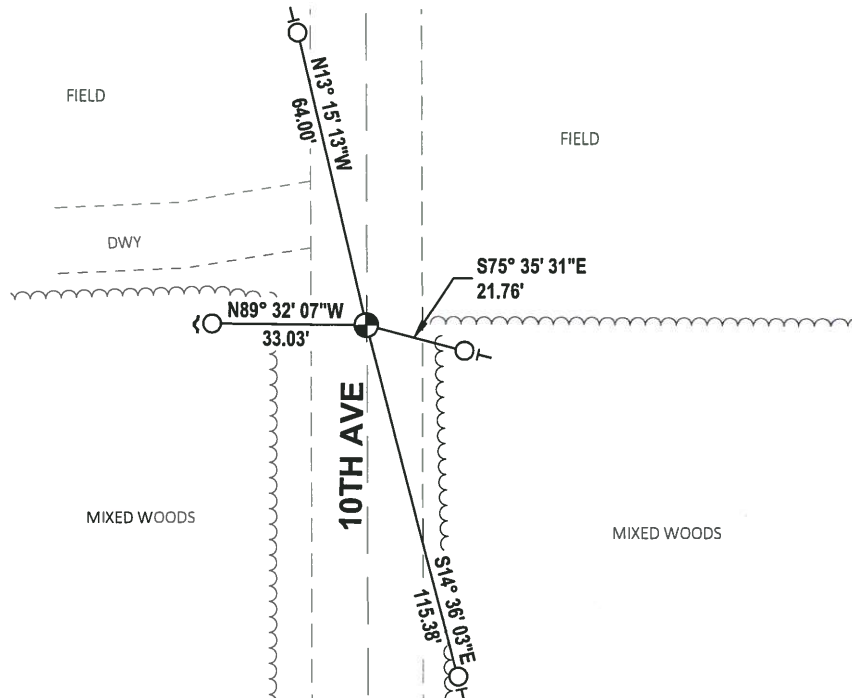
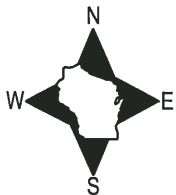
DATA SHOWN HERE ON THIS TIE SHEET IS CORRECT AND COMPLETE TO THE BEST OF MY KNOWLEDGE AND BELIEF.

PROFESSIONAL LAND SURVEYOR

DATE 8-10-18

- TIE SKETCH

NOTE: THE CORNER FALLS 20'± SOUTH OF THE CENTERLINE OF THE DWY.



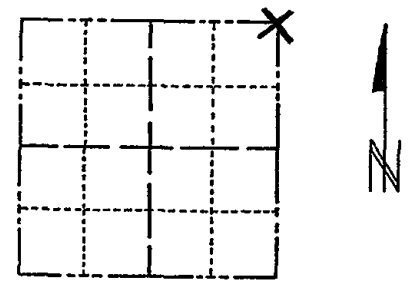
- FOUND 3/4" IRON ROD
- FOUND HARRISON MONUMENT
- ↘ STEEL FENCE POST
- ⊥ VINYL "T" POST

ADAMS COUNTY

Survey Monument Record

TYPE OF MONUMENT: 30" HARRISON
 STATE PLANE COORDINATES: N _____
 E _____
 ELEVATION — M.S.L. DATUM: _____
 THETA ANGLE: _____
 FIELD BOOK: _____ PAGE _____

CORNER NO. 342
 SECTION 28
 TOWN 15
 RANGE 6



LOCATION
(Indicated by 'X')

SEAL:



BASIS FOR MONUMENT LOCATION

(Use reverse side if necessary)

Show info such as: History of corner, with reference to Vol. and pg, dates, surveyor; exact description of monument replaced; if location computed, by taped or EDM traverse; landowner remarks, etc.

Excavated with backhoe. Found bottom of old wood post. Replaced same with Harrison.

CORNER O.K. 10-13-76 JS-SS

MAINTENANCE RECORD

Date	Init.	Remarks
11-10-8	TH-DW	MON & TIES O.K
1-16-86	GR-SS	" " "
1-31-91	KZ-SG	ALL OK
2-7-96	CR-JG	OK
2-1-01	MH-SG	1 GONE - 1 NEW
5-12-06	JG	1-GONE, 2-NEW TIE
2-8-11	SS	OK

CERTIFIED CORRECT:

Anthony B. Kiedrowski
 Registered Land Surveyor

DATE: 9/3/73

TIE SKETCH

(Show at least four ties)

