

PUBLIC LAND SURVEY MONUMENT RECORD

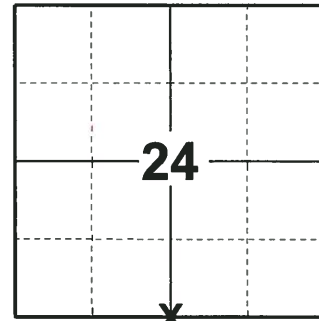
TYPE OF MONUMENT: HARRISON
 ADAMS COUNTY COORDINATES, NAD 83 (2007)

N. 143511.807

E. 555022.256

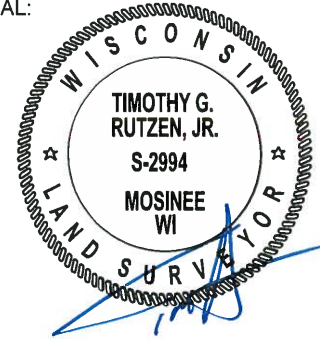
ELEVATION- DATUM

FIELD WORK DATE: 07/02/2018



LOCATION
 (INDICATE CORNER BY "X")

SEAL:



DATA SHOWN HERE ON THIS TIE SHEET IS CORRECT AND COMPLETE TO THE BEST OF MY KNOWLEDGE AND BELIEF.

PROFESSIONAL LAND SURVEYOR

DATE 8-10-18

BASIS FOR MONUMENT LOCATION

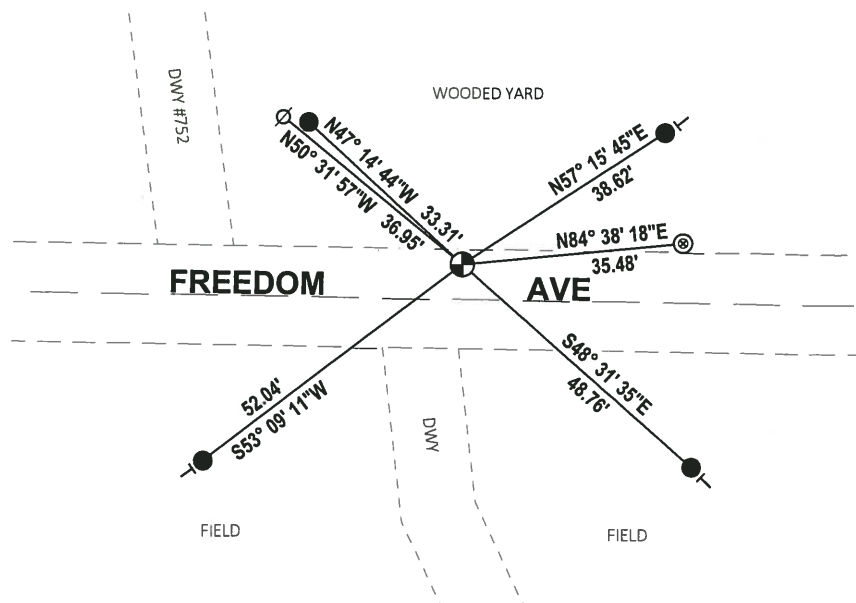
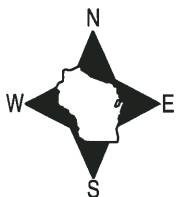
1971 - PLS 981 SET HARRISON MONUMENT AND TIED OUT.

1980 - PLS 878 EXCAVATED A LARGE AREA WITH A BACKHOE AND FOUND NOTHING. THIS CORNER WAS ORIGINALLY SET BY PREVIOUS COUNTY SURVEYOR ERRONEOUSLY 40 FEET TO THE WEST. AFTER FINDING A STONE AT THE CORNER 1/2 MILE WEST OF HERE, THIS CORNER IS NOW ESTABLISHED ON LINE AND EQUIDISTANT BETWEEN SECTION CORNERS. NO RESURVEYS ON RECORD SET A HARRISON MONUMENT AND TIED OUT.

2018 - PLS 2994 FOUND A HARRISON MONUMENT IN THE ROAD SURFACE, 1 TIE AND 1 WITNESS. THE MONUMENT AGREES WITH THE EXISTING TIE AND WITNESS. ACCEPTED THE HARRISON MONUMENT AS THE CORNER LOCATION. SET 4 NEW TIES AND MEASURED TO THE TIES AND WITNESS.

TIE SKETCH

NOTE: THE CORNER FALLS 6'± NORTH OF THE CENTERLINE OF FREEDOM AVE AND 42'± EAST OF THE CENTERLINE OF DWY #752.



- SET 3/4" x 18" IRON REBAR, 1.50#/FT
- ⊙ FOUND 2" O.D. IRON PIPE
- ⊕ FOUND HARRISON MONUMENT
- ∅ WITNESS POWER POLE
- | VINYL "T" POST

ADAMS COUNTY

Survey Monument Record

TYPE OF MONUMENT: Standard Harrison

STATE PLANE COORDINATES: N _____

E _____

ELEVATION — M.S.L. DATUM: _____

THETA ANGLE: _____

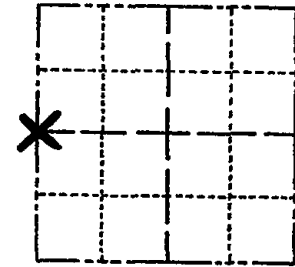
FIELD BOOK: _____ PAGE _____

CORNER NO. 844

SECTION 30

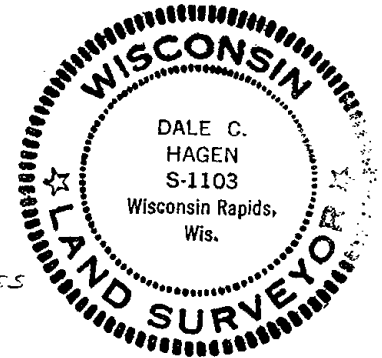
TOWN 15

RANGE 6



LOCATION
(Indicated by 'X')

SEAL:



BASIS FOR MONUMENT LOCATION

(Use reverse side if necessary)

Show info such as: History of corner, with reference to Vol. and pg, dates, surveyor; exact description of monument replaced; if location computed, by taped or EDM traverse; landowner remarks, etc.

Ran EDM/transit traverse around Sections 19 and 30 to determine search areas for investigation.

Could find no evidence of the original corner or any remonumentation.

Set corner equidistant and lon line between adjacent section corners.

Corner 8 ties in good condition 3-31-76 GR-SS
" " O.K. 1-28-86 GR-SS
" " O.K. 3-13-91 JG

1-GONE, 2-NEW TIES, 2/20/96 CR-JG

2-5-01 MA-DG ALL OK
ALL OK - 6-7-06, JG-SS
OK 12-30-11 GR-MS

CERTIFIED CORRECT:

Dale C. Hagen

Registered Land Surveyor

DATE: December 12, 1975

TIE SKETCH

(Show at least four ties)

NOTE:

Ties in trees to nail in disc.

