

## PUBLIC LAND SURVEY MONUMENT RECORD

TYPE OF MONUMENT: HARRISON  
 ADAMS COUNTY COORDINATES, NAD 83 (2007)

N. 140798.311

E. 541785.184

ELEVATION-      -      -      DATUM      -      -     

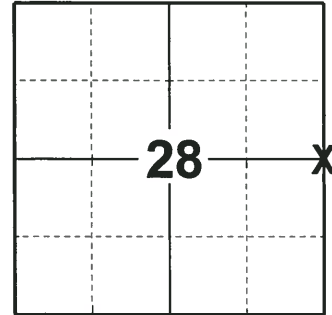
FIELD WORK DATE: 07/09/2018

### BASIS FOR MONUMENT LOCATION

1980 - PLS 1478 CALCULATED THE CORNER EQUIDISTANT AND ON LINE BETWEEN ADJACENT SECTION CORNERS. THIS LOCATION FITS ORIGINAL DISTANCE NOTES VERY WELL. NO EVIDENCE OF ANY PREVIOUS MONUMENTATION WAS FOUND. SET A HARRISON AND TIED OUT.

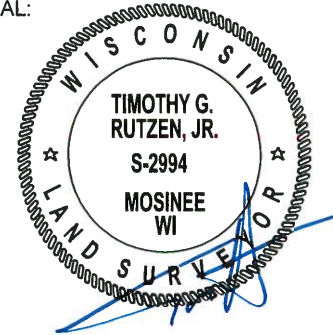
2006 - PLS (UNKNOWN) SET ALL NEW TIES.

2018 - PLS 2994 FOUND A HARRISON MONUMENT FLUSH WITH THE GROUND SURFACE. FOUND NO EVIDENCE OF ANY OF THE TIES OR WITNESSES. VERIFIED THE CORNER TO BE ON LINE AND EQUIDISTANT WITH THE NE AND SE CORNERS. ACCEPTED THE HARRISON MONUMENT AS THE BEST EVIDENCE OF THE CORNER LOCATION. SET 4 NEW TIES AND MEASURED TO THE TIES.



**LOCATION**  
 (INDICATE CORNER BY "X")

SEAL:



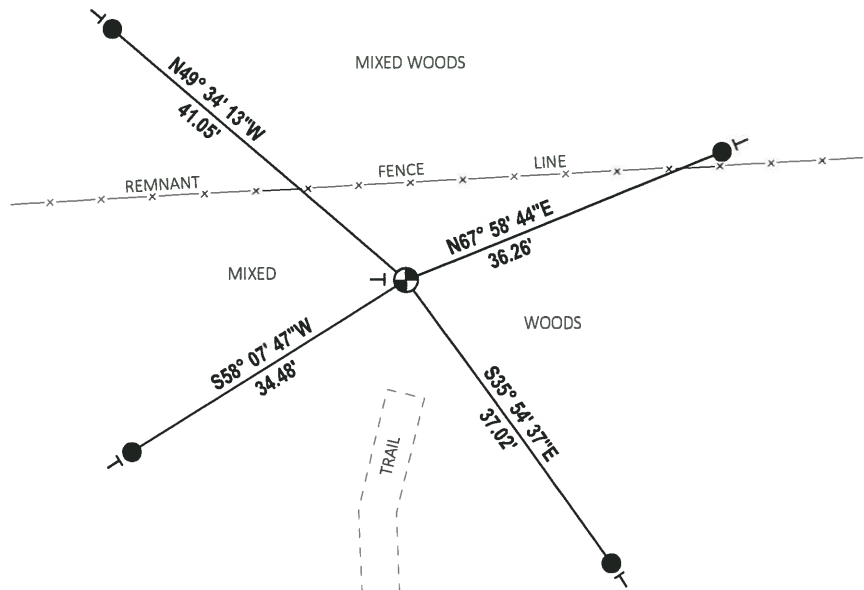
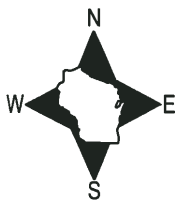
DATA SHOWN HERE ON THIS TIE SHEET IS CORRECT AND COMPLETE TO THE BEST OF MY KNOWLEDGE AND BELIEF.

PROFESSIONAL LAND SURVEYOR

DATE 8-10-18

### - TIE SKETCH

NOTE: THE CORNER FALLS 10'± SOUTH OF THE REMNANT FENCE LINE.

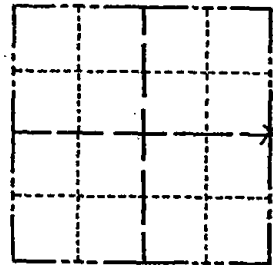


- SET 3/4" x 18" IRON REBAR, 1.50#/FT
- ⊙ FOUND HARRISON MONUMENT
- | VINYL "T" POST

# Government Land Corner Certificate

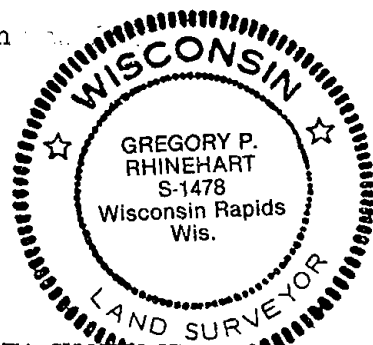
Adams County  
 TYPE OF MONUMENT: Harrison  
 STATE PLANE COORDINATES: N \_\_\_\_\_  
 E \_\_\_\_\_  
 ELEVATION — M.S.L. DATUM: \_\_\_\_\_  
 THETA ANGLE: \_\_\_\_\_  
 FIELD BOOK: 83 PAGE 81  
 DRAWN BY: G. Rhinehart

CORNER NO. 97  
 SECTION 28  
 TOWN 15  
 RANGE 6



LOCATION  
 (Indicated by 'X')

SEAL:



DATA SHOWN HERE  
 CERTIFIED CORRECT:

*Gregory P. Rhinehart*  
 Registered Land Surveyor

DATE: 7/18/80

## BASIS FOR MONUMENT LOCATION

Show info such as: History of corner, with reference to Vol. and pg., dates, surveyor; exact description of monument replaced; if location computed, by taped or EDM traverse; landowner remarks, etc. (Use reverse side if necessary)

Set Corner equidistant and on line between adjacent section corners. This location fits original distance notes very well. No evidence of any previous monumentation was found.

### MAINTENANCE RECORD

Date	Init.	Remarks
12-20-81	SK-BW	MONY TIES O.K.
3-4-86	SS	" O.K. 4 TIES IN GOOD SHAPE
2/20/96	JG-CRA	GONE, 4-LEFT MON. OK

## TIE SKETCH

Show at least four ties, also fence lines, roads, topo, size and type of witness trees and if off road - best way to arrive at corner.

SEE REVERSE  
 ALL NEW TIES  
 6-7-06

