

PUBLIC LAND SURVEY MONUMENT RECORD

TYPE OF MONUMENT: HARRISON (BROKEN-TOP)
 ADAMS COUNTY COORDINATES, NAD 83 (2007)

N. 140918.197

E. 547058.633

ELEVATION: DATUM

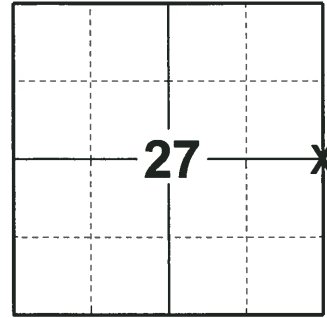
FIELD WORK DATE: 07/05/2018

BASIS FOR MONUMENT LOCATION

1973 - PLS 878 CALCULATED THE CORNER POSITION ON A STRAIGHT LINE AND EQUIDISTANT BETWEEN SECTION CORNERS. SET A HARRISON MONUMENT AND TIED OUT.

1981 - PLS 878 CORNER WAS LOST DURING ROAD CONSTRUCTION. RE-ESTABLISHED THE CORNER POSITION ON A STRAIGHT LINE AND EQUIDISTANT BETWEEN SECTION CORNERS. SET A HARRISON MONUMENT AND TIED OUT.

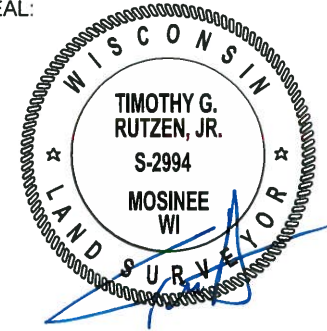
2018 - PLS 2994 FOUND A HARRISON MONUMENT WITH A BROKEN-TOP 10" BELOW THE ROAD SURFACE AND 2 WITNESSES. THE MONUMENT AGREES WITH THE EXISTING WITNESSES. ACCEPTED THE HARRISON MONUMENT WITH A BROKEN-TOP AS THE CORNER LOCATION. SET 4 NEW TIES AND MEASURED TO THE TIES AND WITNESSES.



LOCATION

(INDICATE CORNER BY "X")

SEAL:



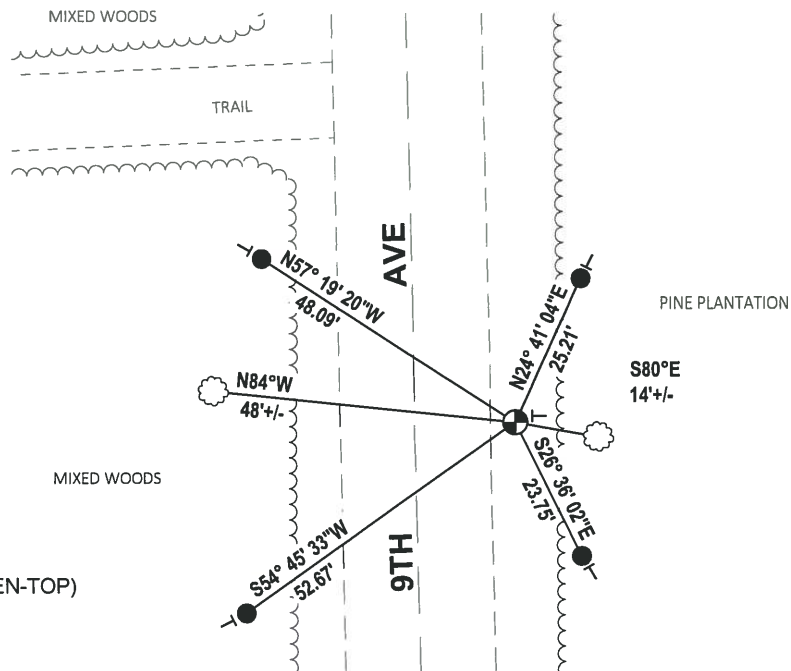
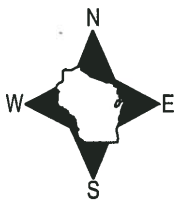
DATA SHOWN HERE ON THIS TIE SHEET IS CORRECT AND COMPLETE TO THE BEST OF MY KNOWLEDGE AND BELIEF.

PROFESSIONAL LAND SURVEYOR

DATE 8-10-18

- TIE SKETCH

NOTE: THE CORNER FALLS 16'± EAST OF THE CENTERLINE OF 9TH AVE.

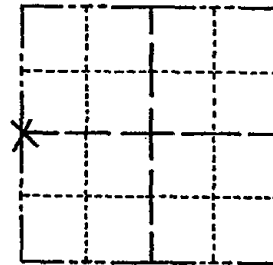


- SET 3/4" x 18" IRON REBAR, 1.50#/FT
- ⊕ FOUND HARRISON MONUMENT (BROKEN-TOP)
- VINYL "T" POST
- ☁ WITNESS TREE

Government Land Corner Certificate

ADAMS County
 TYPE OF MONUMENT: HARRISON
 STATE PLANE COORDINATES: N _____
 E _____
 ELEVATION — M.S.L. DATUM: _____
 THETA ANGLE: _____
 FIELD BOOK: 87 PAGE 133
 DRAWN BY: L.C.

CORNER NO. 98
 SECTION 26
 TOWN 15
 RANGE 6



LOCATION
(Indicated by 'X')

BASIS FOR MONUMENT LOCATION

Show info such as: History of corner, with reference to Vol. and pg., dates, surveyor; exact description of monument replaced; if location computed, by taped or EDM traverse; landowner remarks, etc. (Use reverse side if necessary)

Corner lost in road construction. Reestablished on line and equidistant between Section corners.

SEE PREVIOUS PAGE FOR
 TIE SHEET BY ARK
 12-27-73

SEAL:



DATA SHOWN HERE ON
 CERTIFIED CORRECT:

Anthony B. Kiedrowski
 Registered Land Surveyor

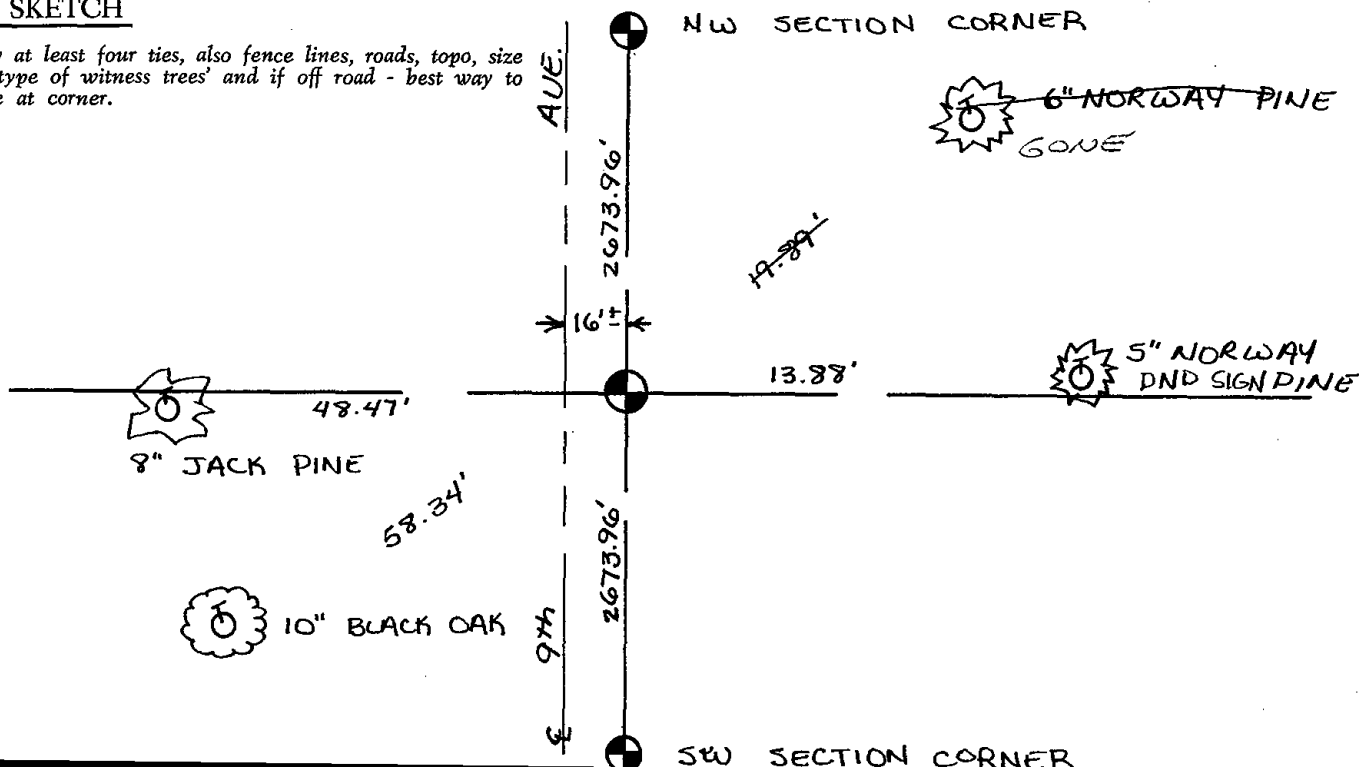
DATE: 8/24/81

1-16-96 - OK - JG-SS

OK, - 4-28-86 - JG

TIE SKETCH

Show at least four ties, also fence lines, roads, topo, size and type of witness trees and if off road - best way to arrive at corner.

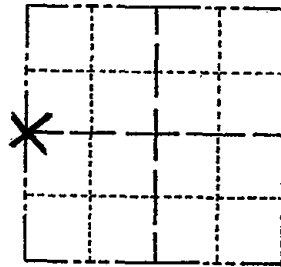


ADAMS COUNTY

Survey Monument Record

TYPE OF MONUMENT: 30" HARRISON
STATE PLANE COORDINATES: N _____
E _____
ELEVATION - M.S.L. DATUM: _____
THETA ANGLE: _____
FIELD BOOK: 109 PAGE 52

CORNER NO. 509
SECTION 26
TOWN 15
RANGE 6



LOCATION
(Indicated by 'X')

SEAL:

BASIS FOR MONUMENT LOCATION

(Use reverse side if necessary)

Show info such as: History of corner, with reference to Vol. and pg, dates, surveyor; exact description of monument replaced; if location computed, by taped or EDM traverse; landowner remarks, etc.

Set on a straight line equidistant between section corners.

CORNER O.K. 10-13-76 JS-SS
2-GONE, 3-LEFT 2-6-01 JG
Mon/TIES OK 01-13-11 SS



SEE NEXT PAGE/TIE SHEET
BY ABK 8-24-81

CERTIFIED CORRECT:

Anthony B. Kiedrowski
Registered Land Surveyor

DATE: 12/27/77

TIE SKETCH

(Show at least four ties)

