

PUBLIC LAND SURVEY MONUMENT RECORD

TYPE OF MONUMENT: HARRISON
 ADAMS COUNTY COORDINATES, NAD 83 (2007)

N. 140843.216

E. 552331.143

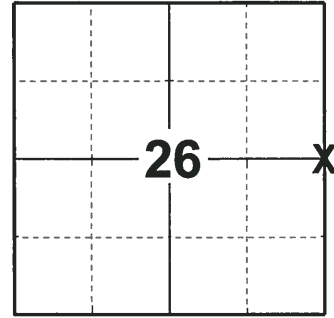
ELEVATION- DATUM

FIELD WORK DATE: 07/05/2018

BASIS FOR MONUMENT LOCATION

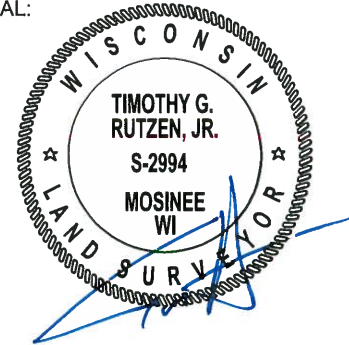
1973 - PLS 878 THIS CORNER WAS MONUMENTED BY CO. SURVEYOR MULLEN IN 1971 BUT WAS DISPUTED. THE AREA WAS EXCAVATED WITH A BACKHOE AND A DEFINITE CHARCOAL PIT WAS FOUND. THIS WAS WITNESSED BY THE TOWN OF SPRINGVILLE TOWN BOARD. THE MONUMENT SET BY MULLEN WAS REMOVED AND THE CHARCOAL PIT LOCATION WAS MONUMENTED. THIS LOCATION MATCHED POSSESSION LINES MUCH BETTER. BARRETT IN OLD FIELD NOTES VOL. 2 PAGE 195 SAID THAT THIS CORNER WAS PLAIN IN 1898. SET A HARRISON AND TIED OUT.

2018 - PLS 2994 FOUND A HARRISON MONUMENT 6" BELOW THE ROAD SURFACE AND 1 TIE. THE MONUMENT AGREES WITH THE EXISTING TIE. ACCEPTED THE HARRISON MONUMENT AS THE CORNER LOCATION. SET 4 NEW TIES AND MEASURED TO THE TIES.



LOCATION
 (INDICATE CORNER BY "X")

SEAL:



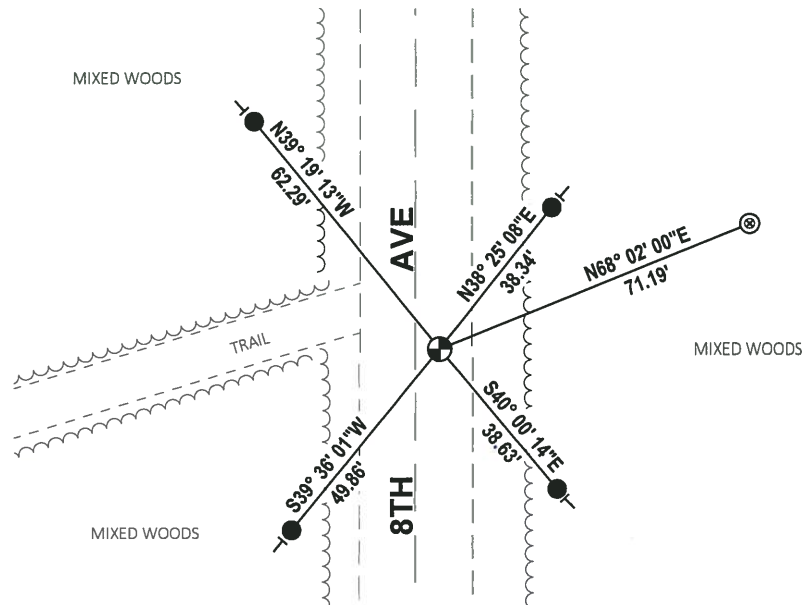
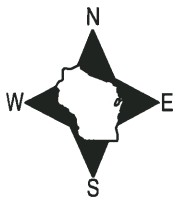
DATA SHOWN HERE ON THIS TIE SHEET IS CORRECT AND COMPLETE TO THE BEST OF MY KNOWLEDGE AND BELIEF.

PROFESSIONAL LAND SURVEYOR

DATE 8-10-18

- TIE SKETCH

NOTE: THE CORNER FALLS 5± EAST OF THE CENTERLINE OF 8TH AVE AND 82± NORTH OF THE CENTERLINE OF DWY #8450.



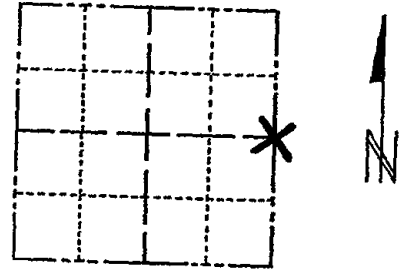
- SET 3/4" x 18" IRON REBAR, 1.50#/FT
- ⊙ FOUND 2" O.D. IRON PIPE
- ⊕ FOUND HARRISON MONUMENT
- └ VINYL "T" POST

ADAMS COUNTY

Survey Monument Record

TYPE OF MONUMENT: 30" HARRISON
 STATE PLANE COORDINATES: N _____
 E _____
 ELEVATION — M.S.L. DATUM: _____
 THETA ANGLE: _____
 FIELD BOOK: _____ PAGE _____

CORNER NO. 25
 SECTION 26
 TOWN 15
 RANGE 6



LOCATION
 (Indicated by 'X')

SEAL:

BASIS FOR MONUMENT LOCATION

(Use reverse side if necessary)

Show info such as: History of corner, with reference to Vol. and pg. dates, surveyor; exact description of monument replaced; if location computed, by taped or EDM traverse; landowner remarks, etc.

This corner was monumented in 1971 by Co. Surveyor Mullen, but was disputed. Area was excavated with a backhoe and a definite charcoal pit was found. This was witnessed by the Town of Springville Town Board. The monument set by Mullen was removed and the charcoal pit was monumented. This matched possession lines much better.

Barrett in old field notes Vol. 2 page 195 said this corner was plain in 1898.



CORNER O.K. 10-13-76 JS-SS
 OK 1-16-96 JG-SS
 OK 2-6-01 JG

CERTIFIED CORRECT:

Anthony D. Kiedrowski
 Registered Land Surveyor

DATE: 12/27/73

TIE SKETCH 2 NEW TIES 3-13-02 OK 1-10-11 SS-GR

(Show at least four ties)

