

30
SECTION

15
TOWN

06
RANGE

ADAMS COUNTY

COUNTY CORNER NO: 103

ROMPORTOL ID: 41506300000

PUBLIC LAND SURVEY MONUMENT RECORD

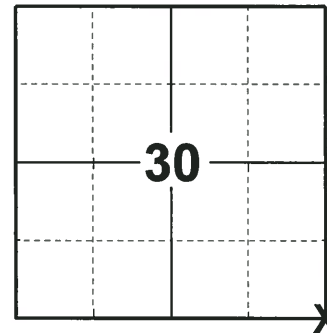
TYPE OF MONUMENT: HARRISON (BROKEN-TOP)
ADAMS COUNTY COORDINATES, NAD 83 (2007)

N. 138221.064

E. 531274.542

ELEVATION- DATUM

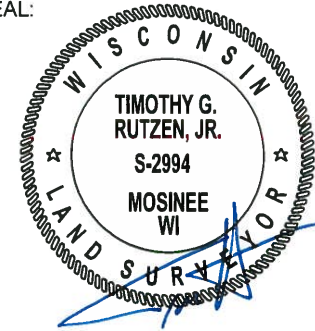
FIELD WORK DATE: 07/17/2018



LOCATION

(INDICATE CORNER BY "X")

SEAL:



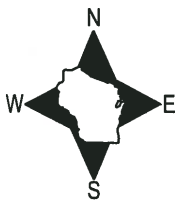
DATA SHOWN HERE ON THIS TIE SHEET IS CORRECT AND COMPLETE TO THE BEST OF MY KNOWLEDGE AND BELIEF.

PROFESSIONAL LAND SURVEYOR

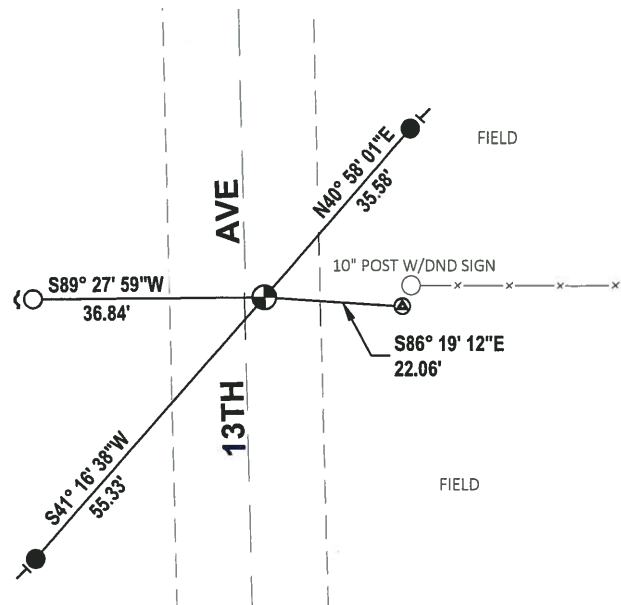
DATE 8-10-18

TIE SKETCH

NOTE: THE CORNER FALLS 3± EAST OF THE CENTERLINE OF 13TH AVE.



MIXED WOODS



- SET 3/4" x 18" IRON REBAR, 1.50#/FT
- FOUND 3/4" IRON ROD
- ⊕ FOUND ADAMS COUNTY ALUMINUM CAP IN CONCRETE
- ⊕ FOUND HARRISON MONUMENT (BROKEN-TOP)
- ↙ STEEL FENCE POST
- VINYL "T" POST

ADAMS COUNTY

Survey Monument Record

TYPE OF MONUMENT: HARRISON STD

STATE PLANE COORDINATES: N _____

E _____

ELEVATION — M.S.L. DATUM: _____

THETA ANGLE: _____

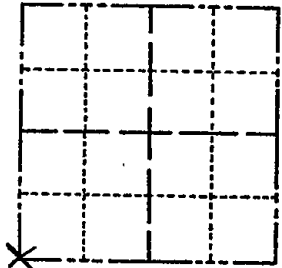
FIELD BOOK: L.L. PAGE _____

CORNER NO. 846

SECTION 29

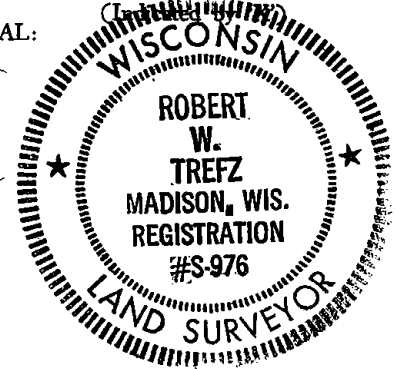
TOWN 17N

RANGE SE



LOCATION

SEAL:



BASIS FOR MONUMENT LOCATION

(Use reverse side if necessary)

Show info such as: History of corner, with reference to Vol. and pg, dates, surveyor; exact description of monument replaced; if location computed, by taped or EDM traverse; landowner remarks, etc.

FOUND HARRISON MONUMENTS AT S 1/4 COR & NW SECT COR, CONC MONUMENT W/ BRONZE TABLET AT W 1/4 COR. FOUND PLAT CORNER ALONG S SIDE DYKE RD. USED PLAT TIES & FOUND MONUMENTS TO ESTABLISH LINES OF SECTION. SET HARRISON AT INTERSECTION OF LINES AFTER INVESTIGATION OF AREA PRODUCED NO EVIDENCE OF CORNER

COR OK 4/8/80 BS-SS

1-GONE, 2-14-05-JG-DA
OK 12-16-10 SS

1 GONE 1 NEW 5/28/85 D.K.

ALL OK 6-25-90 JG

ALL OK 8-29-94 JG-SS

2 NEW 1 GONE 3/23/00 J6-MT

CERTIFIED CORRECT:

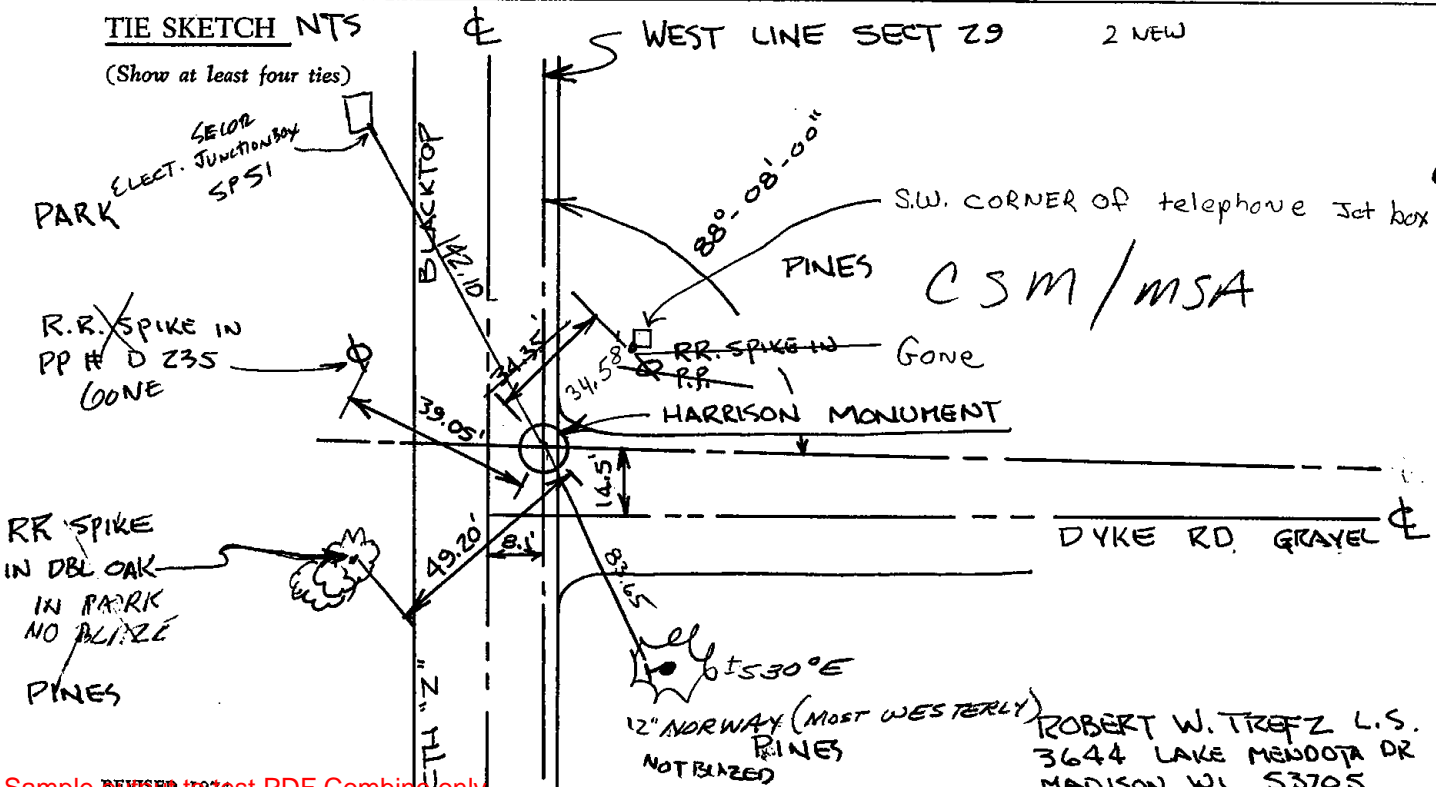
Robert W Trefz

Registered Land Surveyor

DATE: 5/17/75

TIE SKETCH NTS

(Show at least four ties)



ROBERT W. TREFZ L.S.
3644 LAKE MENOTA DR
MADISON, WI 53705

30 SECTION 17 TOWN 05 RANGE

ADAMS COUNTY

COUNTY CORNER NO: 103
 ROMPORTOL ID: 41705300000

PUBLIC LAND SURVEY MONUMENT RECORD

TYPE OF MONUMENT: HARRISON
 ADAMS COUNTY COORDINATES, NAD 83 (2007)

N. 197314.518

E. 499413.248

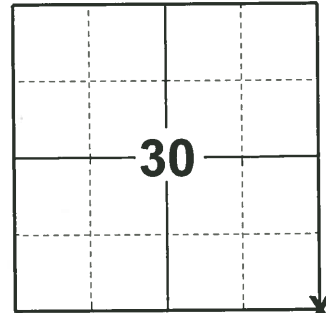
ELEVATION- DATUM

FIELD WORK DATE: 02/21/2019

BASIS FOR MONUMENT LOCATION

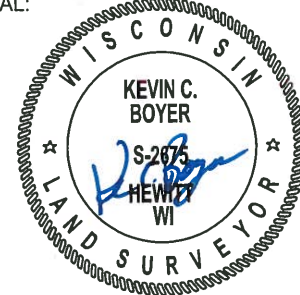
1975 - PLS-976 FOUND HARRISON MONUMENTS AT S1/4 CORNER AND NW SECTION CORNER, CONCRETE MONUMENT W/BRONZE TABLET AT W1/4 CORNER. FOUND PLAT CORNER ALONG SOUTH SIDE DYKE RD. USED PLAT TIES AND FOUND MONUMENTS TO ESTABLISH LINES OF SECTION. SET HARRISON AT INTERSECTION OF LINES AFTER INVESTIGATION OF AREA PRODUCED NO EVIDENCE OF CORNER.

2019 - PLS-2675 FOUND HARRISON MONUMENT 3" BELOW THE ROAD SURFACE AND 3 WITNESSES. THE MONUMENT AGREES WITH ALL 3 WITNESSES. ACCEPTED THE HARRISON MONUMENT AS THE CORNER. SET 4 NEW TIES AND MEASURED TO THE EXISTING WITNESSES.



LOCATION
 (INDICATE CORNER BY "X")

SEAL:



DATA SHOWN HERE ON THIS TIE SHEET IS CORRECT AND COMPLETE TO THE BEST OF MY KNOWLEDGE AND BELIEF.

PROFESSIONAL LAND SURVEYOR

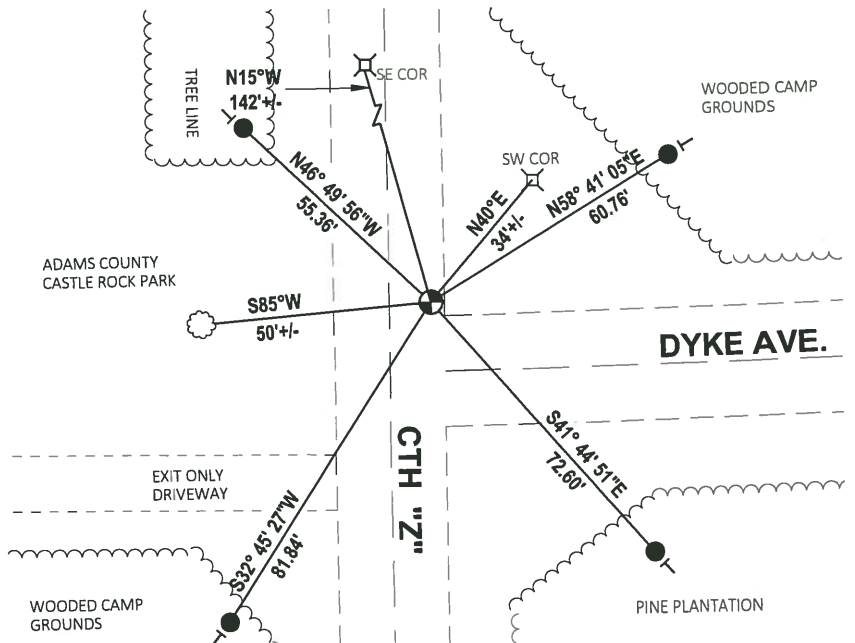
DATE 3/12/19

- TIE SKETCH

NOTE: THE CORNER LANDS 9±' EAST OF CENTERLINE OF CTH "Z" AND 13'± NORTH OF CENTERLINE DYKE AVE.



- SET 3/4" x 18" IRON REBAR, 1.50#/FT
- ⊙ FOUND HARRISON MONUMENT
- ┊ VINYL "T" POST
- ⊙ WITNESS TREE
- ⊙ UTILITY PEDESTAL



ADAMS COUNTY

Survey Monument Record

TYPE OF MONUMENT: HARRISON STANDARD MONUMENT

STATE PLANE COORDINATES: N _____

E _____

ELEVATION — M.S.L. DATUM: _____

THETA ANGLE: _____

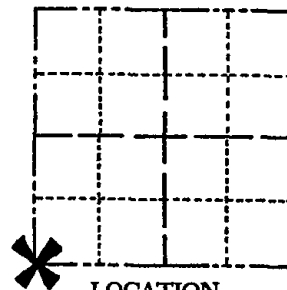
FIELD BOOK: _____ PAGE _____

CORNER NO. 626

SECTION 29

TOWN 15

RANGE 6



LOCATION
(Indicated by 'X')

SEAL:

BASIS FOR MONUMENT LOCATION

(Use reverse side if necessary)

Show info such as: History of corner, with reference to Vol. and pg. dates, surveyor; exact description of monument replaced; if location computed, by taped or EDM traverse; landowner remarks, etc.

This point was established by an EDM traverse of the section. The point matched existing evidence in the vicinity.

Harrison
Harrison MAINTENANCE RECORD - new ties 10-14-76 JS SS

Date	Init.	Remarks
10-12-81	LC-TH	MON & TICS O.K.
1-21-86	GR-SS	O.K.
1-31-91	KZ-SG	ALL O.K.
1-17-96	SG-SS	O.K.
2-5-01	MA-SG	ALL O.K.
8-26-06	SJS	O.K.

01-10-11 ER-SS O.K.



CERTIFIED CORRECT:

Dale C. Hagen
Registered Land Surveyor

DATE: 12-30-74

TIE SKETCH

(Show at least four ties)

