

## PUBLIC LAND SURVEY MONUMENT RECORD

TYPE OF MONUMENT: HARRISON (BROKEN-TOP)  
 ADAMS COUNTY COORDINATES, NAD 83 (2007)

N. 138245.384

E. 533900.836

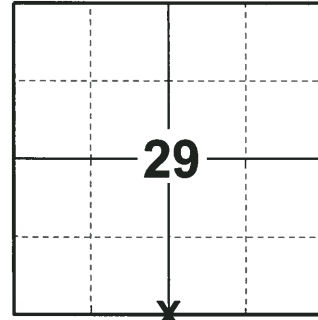
ELEVATION-      DATUM     

FIELD WORK DATE: 07/11/2018

### BASIS FOR MONUMENT LOCATION

1974 - PLS 1103 RAN EDM/TRANSIT TRAVERSE OF SECTIONS 20 AND 29-15-6E TO DETERMINE SEARCH AREAS FOR CORNERS. CALCULATED THE POSITION EQUIDISTANT AND ON LINE BETWEEN ADJACENT SECTION CORNERS. SET A HARRISON MONUMENT AT THE CALCULATED POSITION AND TIED OUT.

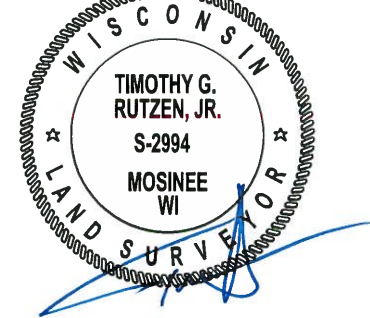
2018 - PLS 2994 FOUND A HARRISON MONUMENT WITH A BROKEN-TOP 12" BELOW THE GROUND SURFACE. FOUND NO EVIDENCE OF ANY OF THE TIES OR WITNESSES. AFTER FURTHER REVIEW, THE CORNER FALLS EQUIDISTANT BETWEEN SECTION CORNERS, HOWEVER, 32± NORTH FROM BEING ON LINE. ACCEPTED THE HARRISON MONUMENT WITH A BROKEN-TOP AS THE BEST EVIDENCE OF THE CORNER LOCATION. SET 4 NEW TIES AND MEASURED TO THE TIES.



**LOCATION**

(INDICATE CORNER BY "X")

SEAL:



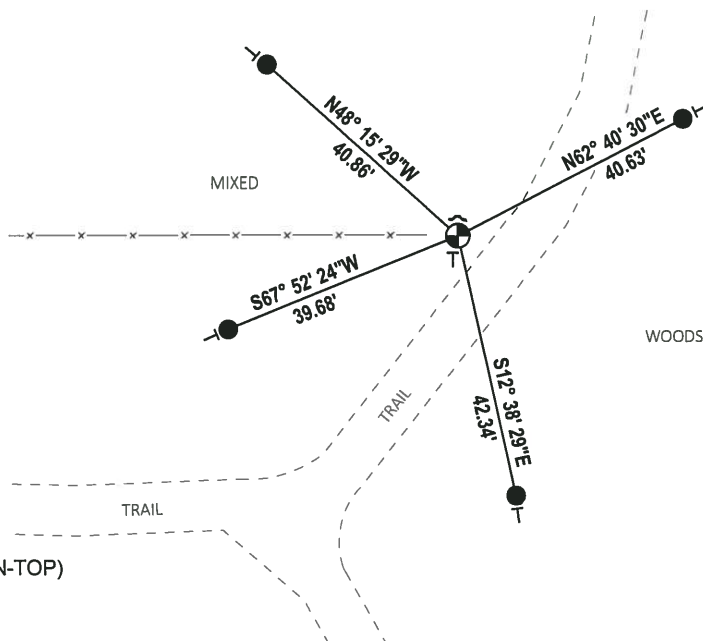
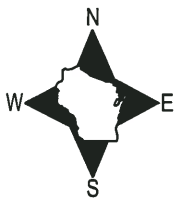
DATA SHOWN HERE ON THIS TIE SHEET IS CORRECT AND COMPLETE TO THE BEST OF MY KNOWLEDGE AND BELIEF.

PROFESSIONAL LAND SURVEYOR

DATE 8-10-18

### - TIE SKETCH

NOTE: THE CORNER FALLS 5'± WEST OF THE TRAIL



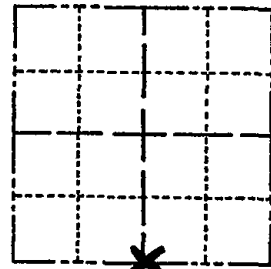
- SET 3/4" x 18" IRON REBAR, 1.50#/FT
- ⊕ FOUND HARRISON MONUMENT (BROKEN-TOP)
- ~ STEEL FENCE POST
- ⊗ VINYL "T" POST

# ADAMS COUNTY

## Survey Monument Record

TYPE OF MONUMENT: 30" Harrison standard  
 STATE PLANE COORDINATES: N \_\_\_\_\_  
 E \_\_\_\_\_  
 ELEVATION — M.S.L. DATUM: \_\_\_\_\_  
 THETA ANGLE: \_\_\_\_\_  
 FIELD BOOK: \_\_\_\_\_ PAGE \_\_\_\_\_

CORNER NO. 623  
 SECTION 29  
 TOWN 15  
 RANGE 6



LOCATION  
 (Indicated by 'X')

SEAL:

### BASIS FOR MONUMENT LOCATION

(Use reverse side if necessary)

Show info such as: History of corner, with reference to Vol. and pg, dates, surveyor; exact description of monument replaced; if location computed, by taped or EDM traverse; landowner remarks, etc.

Ran EDM/transit traverse of Sections 20 and 29-15-6E to determine search areas for corners in the area. This corner was set equidistant and on line between adjacent Section corners.

CORNER O.K. 10-14-76 JS-SS

### MAINTENANCE RECORD

Date	Init.	Remarks
12-8-81	SK-BW	Mon & Ties O.K.
3-5-86	CR-SS	OK
1-12-91	SS-JG	ALL OK
2-12-01	JG-MH	1-GONE, 2-NEW, TOP BROKEN OFF, 1'DEEP
6-7-06	JG-SS	OK-
12-21-11	ML	OK



CERTIFIED CORRECT:

*Dale C. Hagen*  
 Registered Land Surveyor

DATE: 12-30-74

### TIE SKETCH

(Show at least four ties)

NOTE: Ties to nail and disc in trees.

