

PUBLIC LAND SURVEY MONUMENT RECORD

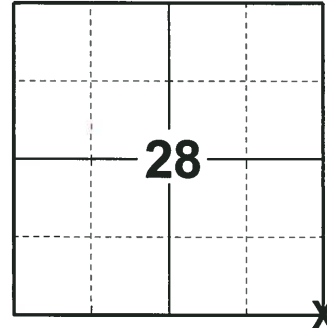
TYPE OF MONUMENT: HARRISON
 ADAMS COUNTY COORDINATES, NAD 83 (2007)

N. 138152.858

E. 541776.516

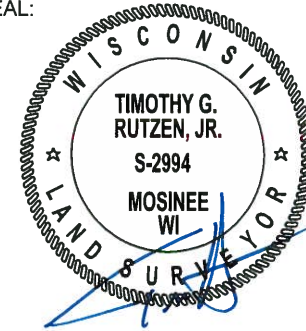
ELEVATION- - - DATUM - -

FIELD WORK DATE: 07/09/2018



LOCATION
 (INDICATE CORNER BY "X")

SEAL:



DATA SHOWN HERE ON THIS TIE SHEET IS CORRECT AND COMPLETE TO THE BEST OF MY KNOWLEDGE AND BELIEF.

PROFESSIONAL LAND SURVEYOR

DATE 8-10-18

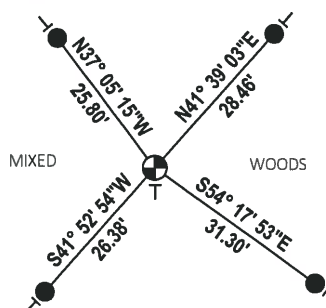
BASIS FOR MONUMENT LOCATION

1980 - PLS 1478 THIS CORNER WAS CALCULATED BY THE DOUBLE PROPORTIONATE MEASUREMENT METHOD USING THE NW AND SE CORNERS OF SECTION 27, AND THE NW AND SE CORNERS OF SECTION 33. A.B.K. EXCAVATED ON THE CENTERLINE AT THIS LOCATION AND FOUND NOTHING. THIS LOCATION FIT ORIGINAL DISTANCE NOTES FOR THE FOUR SECTIONS VERY WELL. NO RECORD OF ANY MONUMENTATION SUBSEQUENT TO THE ORIGINAL WAS FOUND. SET A HARRISON AT THE CORNER POSITION AND TIED OUT.

2018 - PLS 2994 FOUND A HARRISON MONUMENT FLUSH WITH THE GROUND SURFACE. FOUND NO EVIDENCE OF ANY OF THE TIES OR WITNESSES. HOWEVER, THE LOCATION FIT THE DISTANCE TO THE CENTERLINE OF FUR AVE. ACCEPTED THE HARRISON MONUMENT AS THE BEST EVIDENCE OF THE CORNER LOCATION. SET 4 NEW TIES AND MEASURED TO THE TIES.

TIE SKETCH

NOTE: THE CORNER FALLS 40'± SOUTH OF THE CENTERLINE OF FUR AVE.

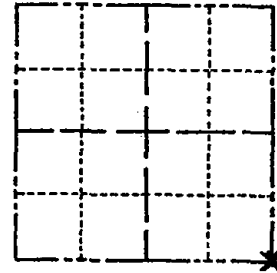


- SET 3/4" x 18" IRON REBAR, 1.50#/FT
- ⊕ FOUND HARRISON MONUMENT
- ⊖ VINYL "T" POST

Government Land Corner Certificate

Adams County
 TYPE OF MONUMENT: Harrison
 STATE PLANE COORDINATES: N _____
 E _____
 ELEVATION — M.S.L. DATUM: _____
 THETA ANGLE: _____
 FIELD BOOK: 93 PAGE 93
 DRAWN BY: G. Rhinehart

CORNER NO. 107
 SECTION 28
 TOWN 15
 RANGE 6



LOCATION
 (Indicated by 'X')

BASIS FOR MONUMENT LOCATION

Show info such as: History of corner, with reference to Vol. and pg., dates, surveyor; exact description of monument replaced; if location computed, by taped or EDM traverse; landowner remarks, etc. (Use reverse side if necessary)

This corner set by the double proportionate measurement method using the NW AND SE Corners of Section 27, and the NW and SE Corners of Section 33 all of T15 N, R6E. A.B. K. excavated on the centerline at this location and found nothing. This location fit original distance notes for the four sections very well. No record of any monumentation subsequent to the original was found.

SEAL:



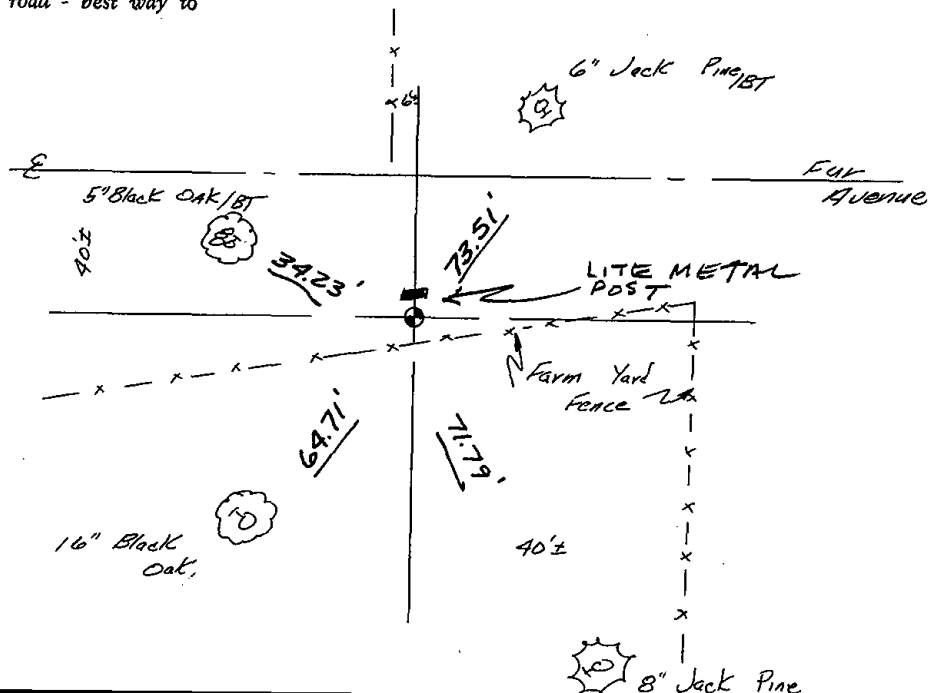
DATA SHOWN HERE ON
 CERTIFIED CORRECT:

Gregory P. Rhinehart
 Registered Land Surveyor

DATE: 4/18/80

TIE SKETCH

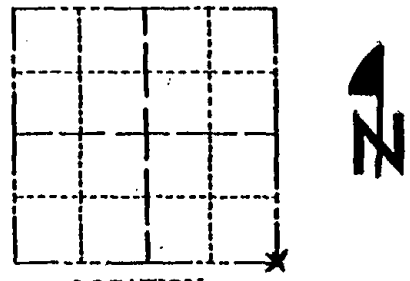
Show at least four ties, also fence lines, roads, topo, size and type of witness trees and if off road - best way to arrive at corner.



Government Land Corner Certificate

Adams County
 TYPE OF MONUMENT: Harrison
 STATE PLANE COORDINATES: N _____
 E _____
 ELEVATION — M.S.L. DATUM: _____
 THETA ANGLE: _____
 FIELD BOOK: 03 PAGE 03
 DRAWN BY: G. Rhinehart

CORNER NO. 107
 SECTION 28
 TOWN 15
 RANGE 6



LOCATION
(Indicated by 'X')

BASIS FOR MONUMENT LOCATION

Show info such as: History of corner, with reference to Vol. and pg.; dates, surveyor; exact description of monument replaced; if location computed, by taped or EDM traverse; landowner remarks, etc. (Use reverse side if necessary)

This corner set by the double proportionate measurement method using the NW AND SE Corners of Section 27; and the NW and SE Corners of Section 33 all of T15 N, R6E, A:B: K. excavated on the center-line at this location and found nothing. This location fit original distance notes for the four sections very well; No record of any monumentation subsequent to the original was found.

SEAL:



DATA SHOWN HERE ON
CERTIFIED CORRECT:

Gregory P. Rhinehart
Registered Land Surveyor

DATE: 4/18/80

9 SEP 02 - TIES OK SMM SMLC

TIE SKETCH

Show at least four ties, also fence lines, roads, topo, size and type of witness trees and if off road - best way to arrive at corner.

