

PUBLIC LAND SURVEY MONUMENT RECORD

TYPE OF MONUMENT: HARRISON
ADAMS COUNTY COORDINATES, NAD 83 (2007)

N. 138244.206

E. 547070.955

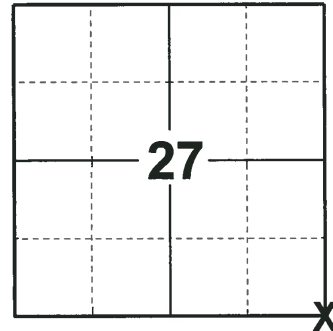
ELEVATION- DATUM

FIELD WORK DATE: 07/09/2018

BASIS FOR MONUMENT LOCATION

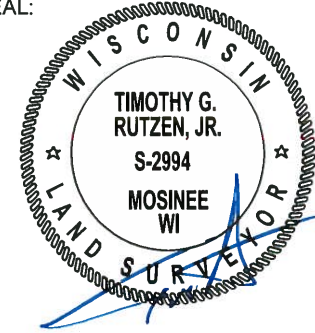
1973 - PLS 878 THIS CORNER WAS MONUMENTED BY CO. SURVEYOR MULLEN IN 171 BUT WAS DISPUTED. ACCORDING TO OLD COUNTY SURVEYOR RECORDS, VOL. 2, PAGE 195, THIS CORNER WAS OBLITERATED IN 1898, PER CO. SURVEYOR BARRETT, WHO ALSO SAID HE DID NOT RESET IT. THE ENTIRE INTERSECTION WAS CAREFULLY EXCAVATED WITH A BACKHOE. THREE RAILROAD SPIKES WERE FOUND AT VARIOUS LOCATIONS. ONE OF THE SPIKES MATCHED SURVEYS DONE BY MIDSTATES IN THE AREA. MONUMENTED THAT POINT WITH A HARRISON MONUMENT AND TIED OUT. AFTER AN EXTENSIVE EDM TRAVERSE OF THE AREA. THE HARRISON SET BY MULLEN WAS REMOVED AND REPLACED WITH A 2" IRON PIPE. BARRETT ALSO NOTED AT THE TIME THAT OTHER CORNERS OF THIS SECTION WERE "PLAIN".

2018 - PLS 2994 FOUND A HARRISON MONUMENT 4" BELOW THE ROAD SURFACE, 2 TIES, 3 PROPERTY IRONS AND 1 WITNESS. THE MONUMENT AGREES WITH THE EXISTING TIES AND WITNESS. ACCEPTED THE HARRISON MONUMENT AS THE CORNER LOCATION. MEASURED TO THE TIES, PROPERTY IRONS AND WITNESS.



LOCATION
(INDICATE CORNER BY "X")

SEAL:



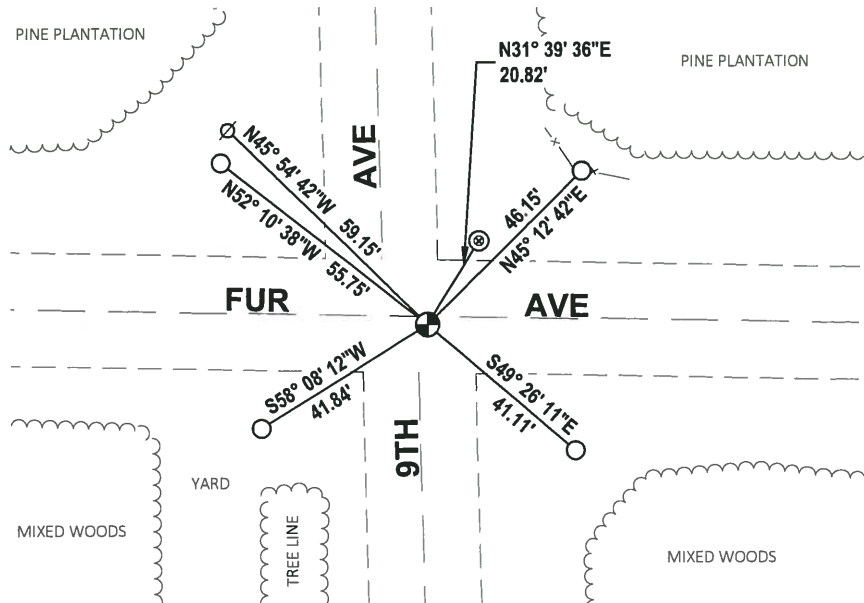
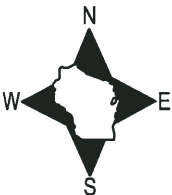
DATA SHOWN HERE ON THIS TIE SHEET IS CORRECT AND COMPLETE TO THE BEST OF MY KNOWLEDGE AND BELIEF.

PROFESSIONAL LAND SURVEYOR

DATE 8-10-18

TIE SKETCH

NOTE: THE CORNER FALLS 2± SOUTH OF THE CENTERLINE OF FUR AVE AND 6± EAST OF THE CENTERLINE OF 9TH AVE TO THE SOUTH.



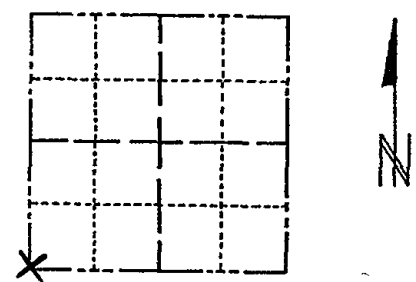
- SET 3/4" x 18" IRON REBAR, 1.50#/FT
- FOUND 3/4" IRON ROD
- ⊙ FOUND 2" O.D. IRON PIPE
- ⊕ FOUND HARRISON MONUMENT
- ∅ WITNESS POWER POLE

ADAMS COUNTY

Survey Monument Record

TYPE OF MONUMENT: 30" HARRISON
 STATE PLANE COORDINATES: N _____
 E _____
 ELEVATION — M.S.L. DATUM: _____
 THETA ANGLE: _____
 FIELD BOOK: 110 PAGE 10

CORNER NO. 84
 SECTION 26
 TOWN 15
 RANGE 6



LOCATION
(Indicated by 'X')

SEAL:



BASIS FOR MONUMENT LOCATION

(Use reverse side if necessary)

Show info such as: History of corner, with reference to Vol. and pg, dates, surveyor; exact description of monument replaced; if location computed, by taped or EDM traverse; landowner remarks, etc.

This corner was monumented by Co. Surveyor Mullen in 1971 but was disputed. According to old county surveyor records, Vol. 2, page 195, this corner was obliterated in 1898, per then Co. Surveyor Barrett, who also said he did not reset it. The entire intersection was carefully excavated with a backhoe. Three railroad spikes were found at various locations. One of the spikes matched surveys done by Midstates in the area and that point was monumented, after an extensive EDM traverse of the area. The Harrison set by Mullen removed and replaced with a 2" iron pipe. Barret also noted at the time that other corners of this section were "plain".

CERTIFIED CORRECT:

Anthony B. Kiedrowski
 Registered Land Surveyor

DATE: 12/27/77

CORNER O.K. 10-13-76 JS-SS

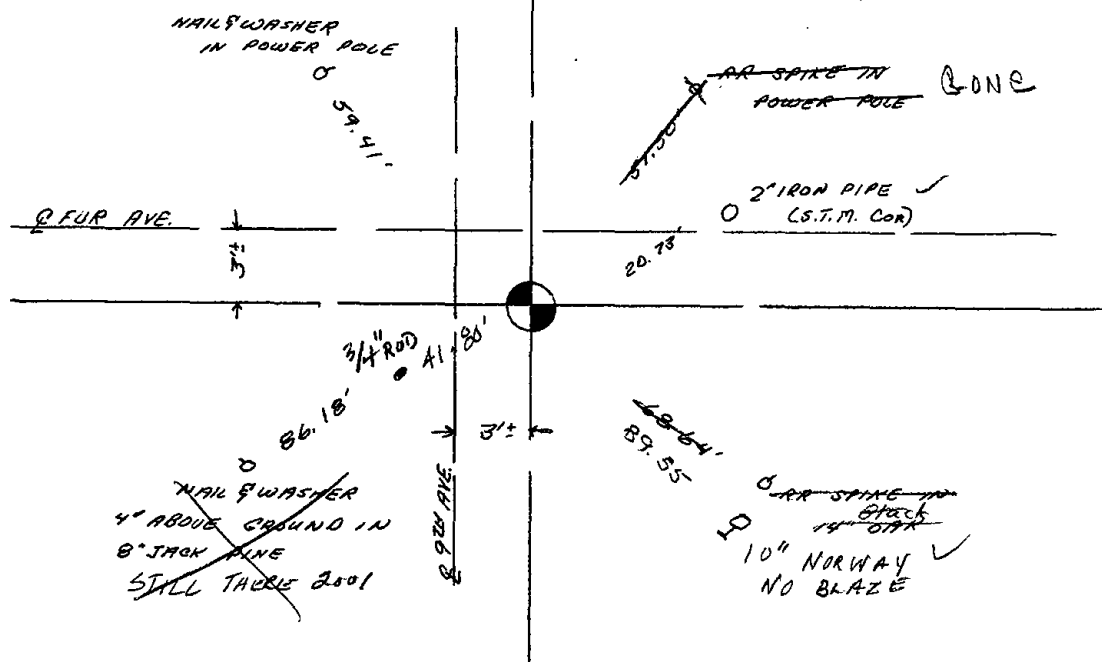
1-GONE, 1-NEW 1-31-91 KZ-JG 6-24-94 CARLSON
 SEE ATTACHED PAGE

TIE SKETCH

(Show at least four ties)

1-16-96 JG-SS - OK
 2-6-01 - JG OK
 01-10-11 GR-SS OK

OK - 4-28-06 - JG

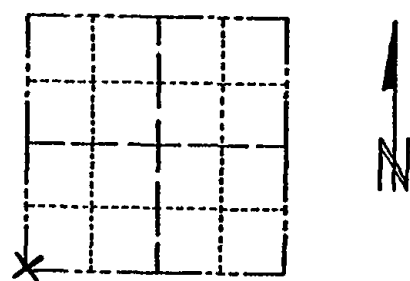


ADAMS COUNTY

Survey Monument Record

TYPE OF MONUMENT: 30" HARRISON
 STATE PLANE COORDINATES: N _____
 E _____
 ELEVATION — M.S.L. DATUM: _____
 THETA ANGLE: _____
 FIELD BOOK: 110 PAGE 10

CORNER NO. 84
 SECTION 26
 TOWN 15
 RANGE 6



LOCATION
(Indicated by 'X')

BASIS FOR MONUMENT LOCATION

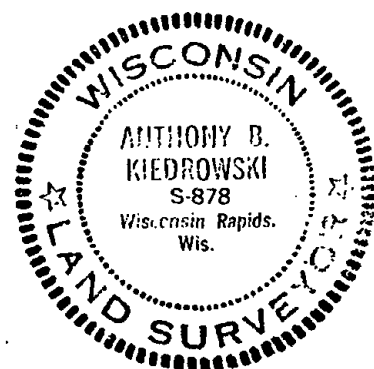
(Use reverse side if necessary)

Show info such as: History of corner, with reference to Vol. and pg. dates, surveyor; exact description of monument replaced; if location computed, by taped or EDM traverse; landowner remarks, etc.

This corner was monumented by Co. Surveyor Mullen in 1971 but was disputed. According to old county surveyor records, Vol. 2, page 195, this corner was obliterated in 1898, per then Co. Surveyor Barrett, who also said he did not reset it. The entire intersection was carefully excavated with a backhoe. Three railroad spikes were found at various locations. One of the spikes matched surveys done by Midstates in the area and that point was monumented, after an extensive EDM traverse of the area. The Harrison set by Mullen removed and replaced with a 2" iron pipe. Barret also noted at the time that other corners of this section were "plain".

CORNER O.K. 10-13-76 JS-55
 1-GONE, 1-NEW 1-31-91 KZ-56

SEAL:



CERTIFIED CORRECT:

Anthony B. Kiedrowski
 Registered Land Surveyor
 DATE: 12/27/77

TIE SKETCH

(Show at least four ties)

