

PUBLIC LAND SURVEY MONUMENT RECORD

TYPE OF MONUMENT: HARRISON
 ADAMS COUNTY COORDINATES, NAD 83 (2007)

N. 138181.449

E. 552334.299

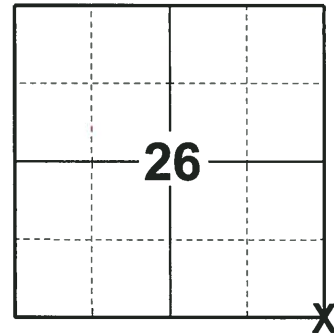
ELEVATION- DATUM

FIELD WORK DATE: 07/05/2018

BASIS FOR MONUMENT LOCATION

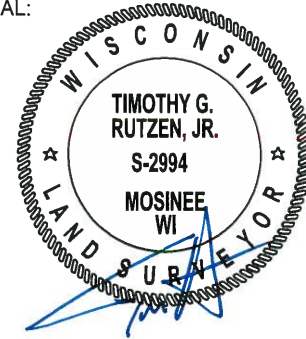
1973 - PLS 878 EXCAVATED THE AREA WITH A BACKHOE AND FOUND A STONE MONUMENT. WITNESSED BY THE TOWN SPRINGVILLE BOARD. THE STONE WAS REPLACED WITH A HARRISON AND TIED OUT. CO. SURVEYOR MULLEN MONUMENTED THIS CORNER SOME DISTANCE EAST OF THIS STONE'S LOCATION, AND IT WAS DISPUTED. AN EXTENSIVE EDM TRAVERSE OF THE AREA INDICATES THE STONE TO BE THE CORRECT LOCATION. THE HARRISON SET BY MULLEN WAS REMOVED AND REPLACED WITH A 2" PIPE.

2018 - PLS 2994 FOUND A HARRISON MONUMENT 4" BELOW THE ROAD SURFACE, 2 TIES AND 2 WITNESSES. THE MONUMENT AGREES WITH THE EXISTING TIES AND WITNESSES. ACCEPTED THE HARRISON MONUMENT AS THE CORNER LOCATION. SET 3 NEW TIES AND MEASURED TO THE TIES AND WITNESSES.



LOCATION
 (INDICATE CORNER BY "X")

SEAL:



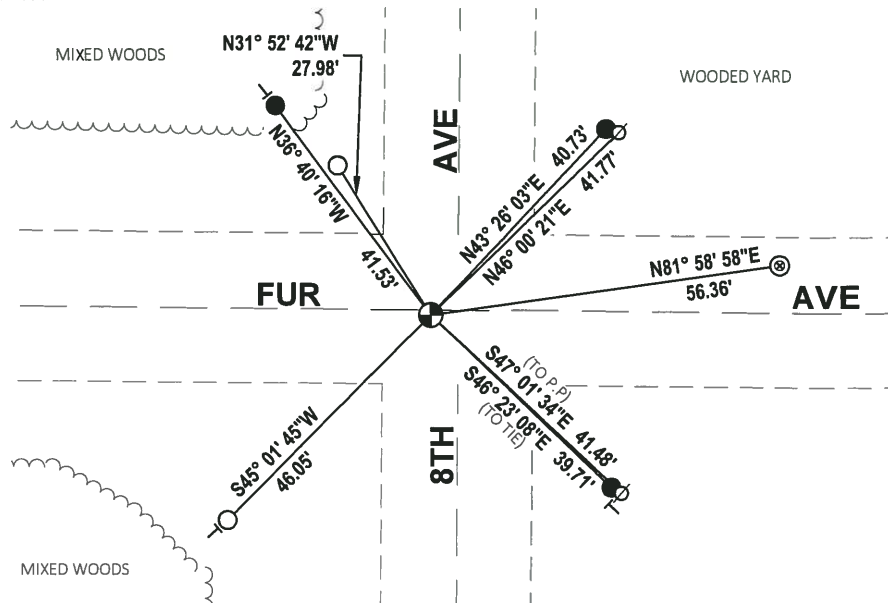
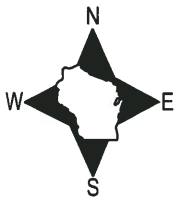
DATA SHOWN HERE ON THIS TIE SHEET IS CORRECT AND COMPLETE TO THE BEST OF MY KNOWLEDGE AND BELIEF.

PROFESSIONAL LAND SURVEYOR

DATE 8-10-18

- TIE SKETCH

NOTE: THE CORNER FALLS 1± SOUTH OF THE CENTERLINE OF FUR AVE AND 4± WEST OF THE CENTERLINE PF 8TH AVE.



- SET 3/4" x 18" IRON REBAR, 1.50#/FT
- FOUND 3/4" IRON ROD
- ⊙ FOUND 2" O.D. IRON PIPE
- ⊕ FOUND HARRISON MONUMENT
- ⊘ WITNESS POWER POLE
- ⊥ VINYL "T" POST

ADAMS COUNTY

CORNER NO. 82

Survey Monument Record

SECTION 26

TYPE OF MONUMENT: Harrison standard

TOWN 15

STATE PLANE COORDINATES: N _____

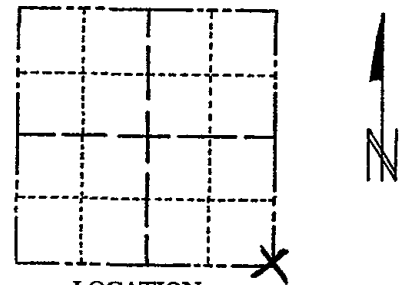
RANGE 6

E _____

ELEVATION — M.S.L. DATUM: _____

THETA ANGLE: _____

FIELD BOOK: _____ PAGE _____



LOCATION
(Indicated by 'X')

SEAL:



BASIS FOR MONUMENT LOCATION

(Use reverse side if necessary)

Show info such as: History of corner, with reference to Vol. and pg, dates, surveyor; exact description of monument replaced; if location computed, by taped or EDM traverse; landowner remarks, etc.

Excavated area with backhoe and found stone monument. Witnessed by the Town of Springville Board. Stone was replaced with Harrison. Co. Surveyor Mullen monumented this corner some distance east of this stone's location, and it was disputed. An extensive EDM traverse of the area indicates stone to be correct in location. Harrison set by Mullen removed and replaced with a 2" pipe.

CORNER O.K. 10-13-76 JS-SS

ALL OK 1-31-91 KE-JG

OK 1-16-96 JG-SS

OK 2-6-01 JG SEE ATTACHED SHEET DTD 8-3-05 DATE: 12/27/73

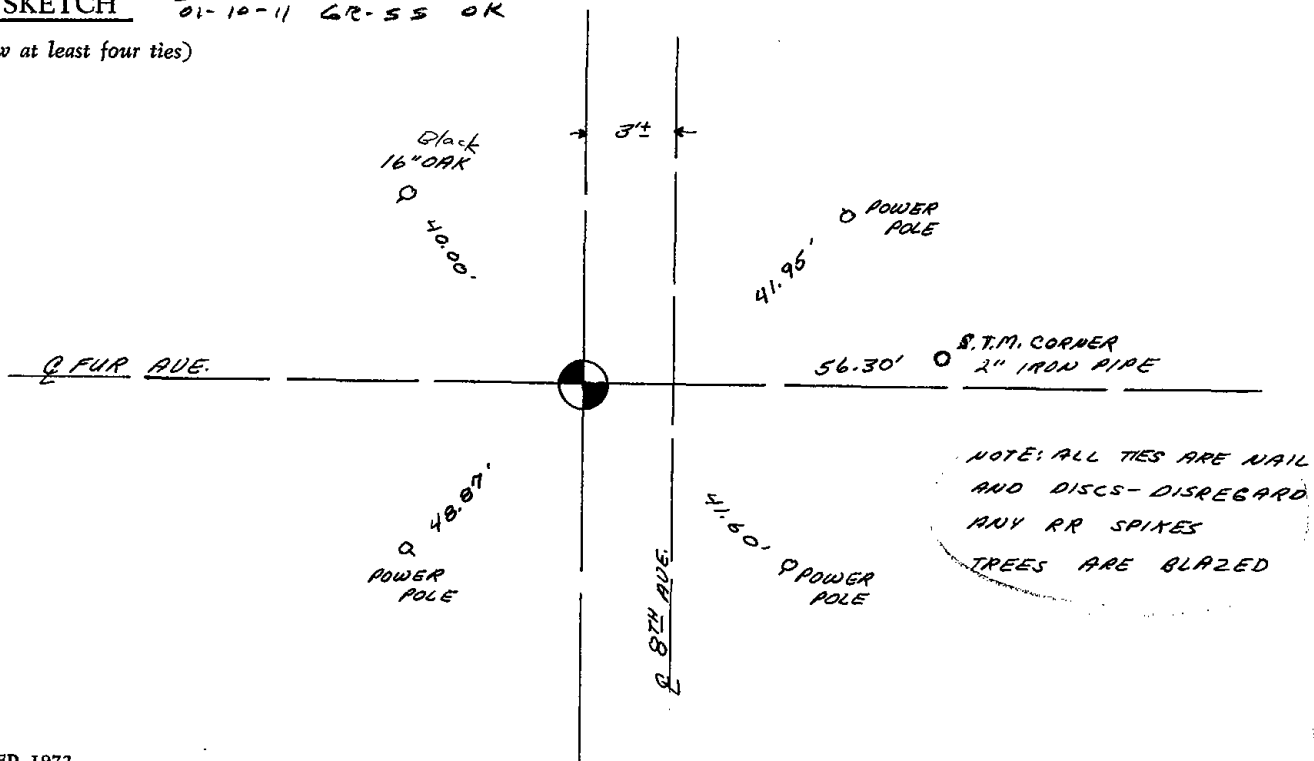
CERTIFIED CORRECT:

Anthony S. Kiedrowski
Registered Land Surveyor

TIE SKETCH

3-13-06 JG-SS OK
01-10-11 GR-SS OK

(Show at least four ties)



ADAMS COUNTY

Survey Monument Record

TYPE OF MONUMENT: Harrison standard

STATE PLANE COORDINATES: N _____

E _____

ELEVATION — M.S.L. DATUM: _____

THETA ANGLE: _____

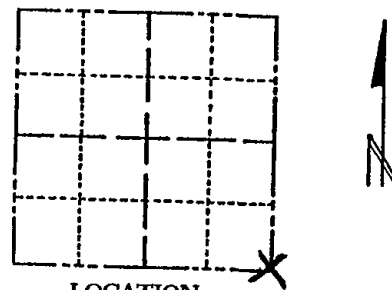
FIELD BOOK: _____ PAGE _____

CORNER NO. 82

SECTION 26

TOWN 15

RANGE 6



LOCATION
(Indicated by 'X')

SEAL:



BASIS FOR MONUMENT LOCATION

(Use reverse side if necessary)

Show info such as: History of corner, with reference to Vol. and pg, dates, surveyor; exact description of monument replaced; if location computed, by taped or EDM traverse; landowner remarks, etc.

Excavated area with backhoe and found stone monument. Witnessed by the Town of Springville Board. Stone was replaced with Harrison. Co. Surveyor Mullen monumented this corner some distance east of this stone's location, and it was disputed. An extensive EDM traverse of the area indicates stone to be correct in location. Harrison set by Mullen removed and replaced with a 2" pipe.

CORNER O.K. 10-13-76 JS-SS
COR/TIES O.K. 11-13-03 SH-MC

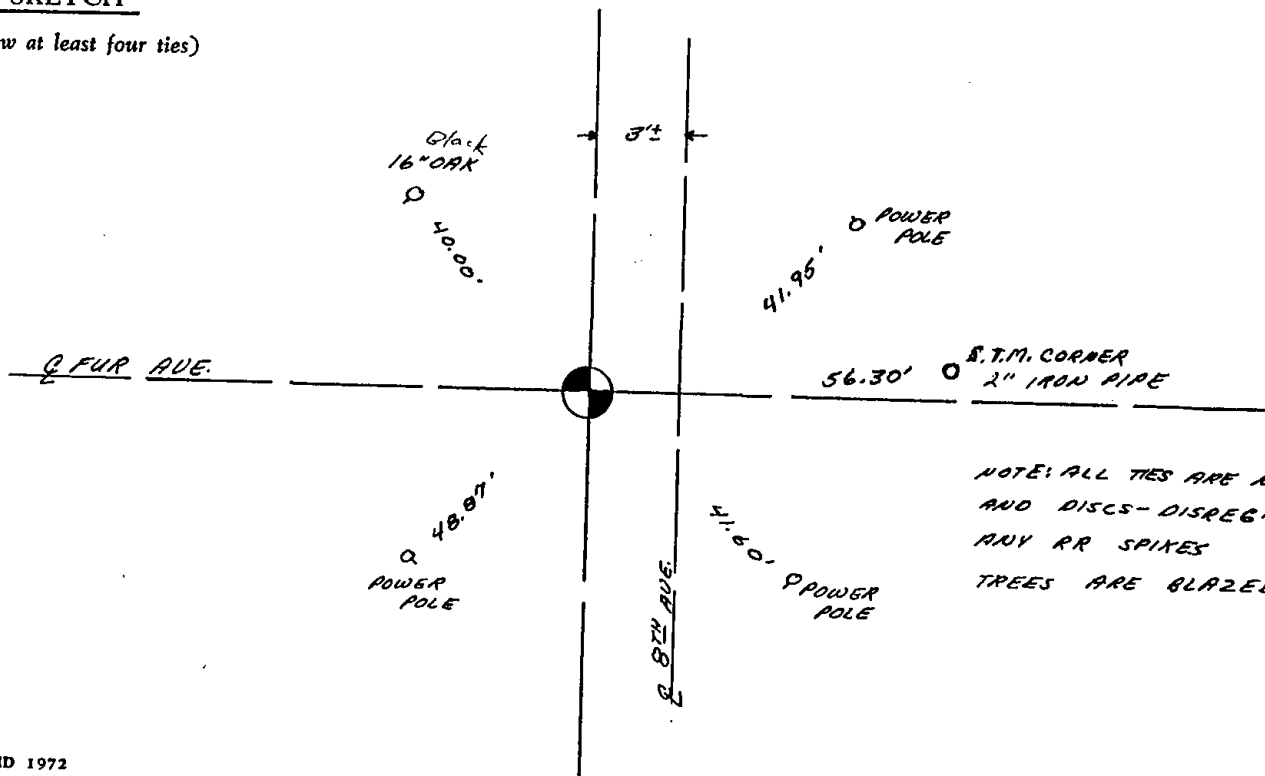
CERTIFIED CORRECT:

Anthony B. Kiedrowski
Registered Land Surveyor

DATE: 12/27/73

TIE SKETCH

(Show at least four ties)

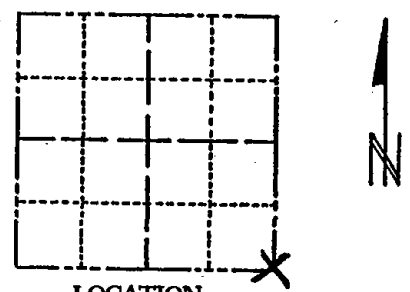


NOTE: ALL TIES ARE NAIL AND DISCS - DISREGARD ANY RR SPIKES TREES ARE BLAZED

CORNER NO. 82
SECTION 26
TOWN 15
RANGE 6

Survey Monument Record

TYPE OF MONUMENT: Harrison standard
STATE PLANE COORDINATES: N _____
E _____
ELEVATION -- M.S.L. DATUM: _____
THETA ANGLE: _____
FIELD BOOK: _____ PAGE _____



LOCATION
(Indicated by 'X')

SEAL:

BASIS FOR MONUMENT LOCATION

(Use reverse side if necessary)

Show info such as: History of corner, with reference to Vol. and pg, dates, surveyor; exact description of monument replaced; if location computed, by taped or EDM traverse; landowner remarks, etc.

Excavated area with backhoe and found stone monument. Witnessed by the Town of Springville Board. Stone was replaced with Harrison. Co. Surveyor Mullen monumented this corner some distance east of this stone's location, and it was disputed. An extensive EDM traverse of the area indicates stone to be correct in location. Harrison set by Mullen removed and replaced with a 2" pipe.



CORNER O.K. 10-13-76 JS-SS
COR/TIES O.K. 11-13-03 SH-MC
COR. OK / NEW TIE 8-3-55 SH-PC

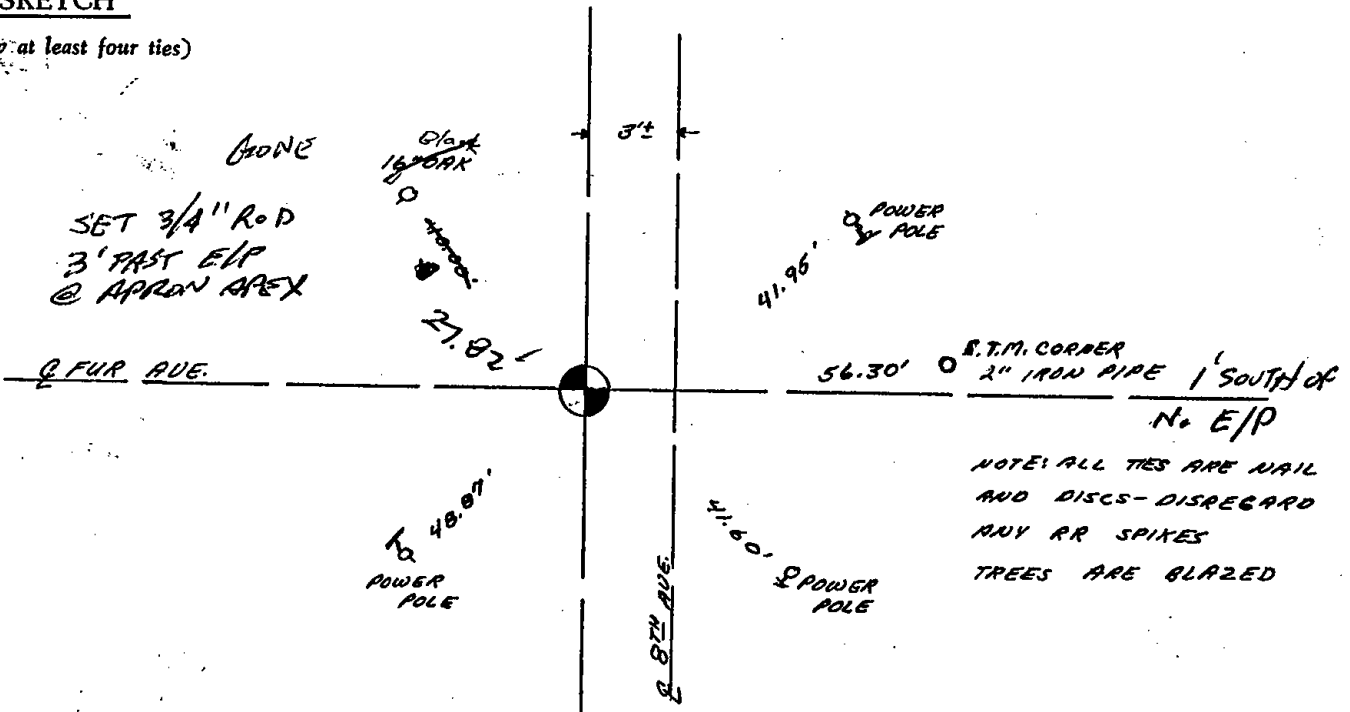
CERTIFIED CORRECT:

Anthony B. Kiedrowski
Registered Land Surveyor

DATE: 12/27/77

TIE SKETCH

(Show at least four ties)



NOTE: ALL TIES ARE NAIL AND DISCS - DISREGARD ANY RR SPIKES
TREES ARE BLAZED