

## PUBLIC LAND SURVEY MONUMENT RECORD

TYPE OF MONUMENT: HARRISON (BROKEN-TOP)  
 ADAMS COUNTY COORDINATES, NAD 83 (2007)

N. 138190.506

E. 555018.633

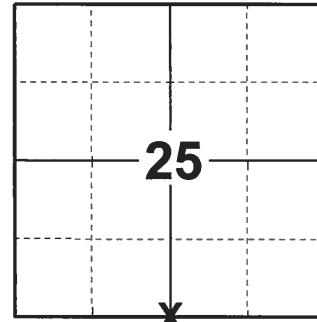
ELEVATION:      DATUM     

FIELD WORK DATE: 05/09/2018

### BASIS FOR MONUMENT LOCATION

1973 - PLS 878 THIS CORNER WAS MONUMENTED BY CO. SURVEYOR MULLEN IN 1971 BUT WAS DISPUTED. THE RAILROAD SPIKE THAT WAS SET HERE BY MIDSTATES WAS ACCEPTED AS CORRECT AND MONUMENTED AFTER ANALYZING AN EDM TRAVERSE OF THE SOUTHEAST QUARTER OF THE ENTIRE TOWN. ALL POSSESSION LINES, ORIGINAL NOTES, MONUMENTS FOUND, AND OLD FIELD NOTES WERE TAKEN INTO CONSIDERATION. HARRISON SET BY MULLEN WAS REMOVED AND REPLACED WITH A 2" PIPE. THIS POINT FALLS IN A ROAD CUT, SO NO EXCAVATION WAS ATTEMPTED. SET A NEW HARRISON AND TIED OUT.

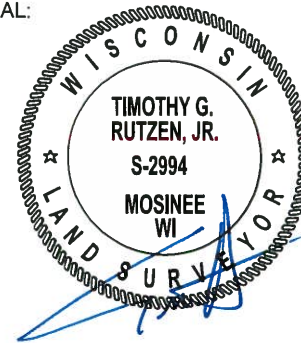
2018 - PLS 2994 FOUND A HARRISON MONUMENT WITH A BROKEN-TOP 3" BELOW THE ROAD SURFACE AND 3 TIES. THE MONUMENT AGREES WITH THE 3 EXISTING TIES. ACCEPTED THE HARRISON MONUMENT WITH A BROKEN-TOP AS THE CORNER LOCATION. SET 2 NEW TIES AND MEASURED TO THE TIES.



**LOCATION**

(INDICATE CORNER BY "X")

SEAL:



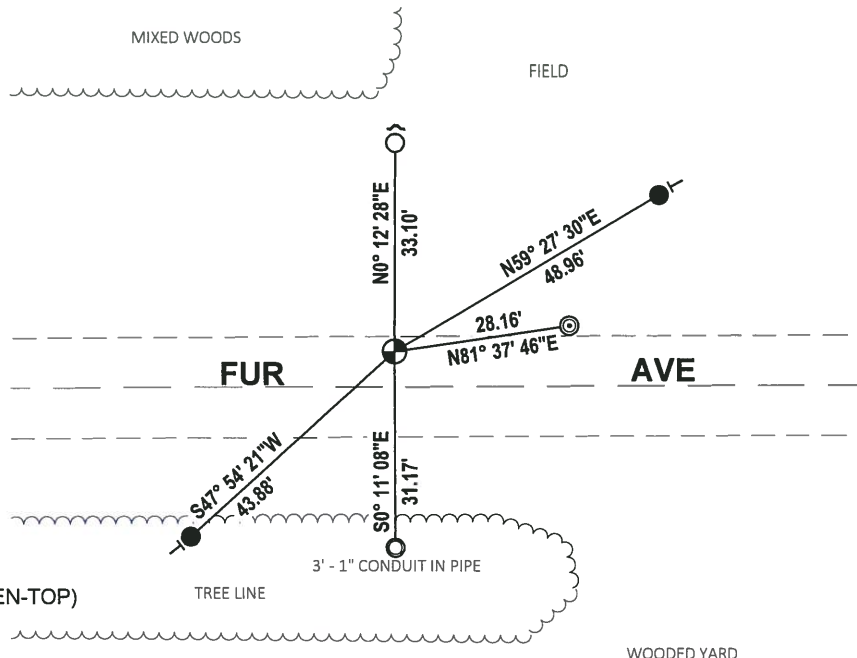
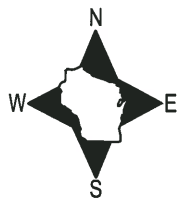
DATA SHOWN HERE ON THIS TIE SHEET IS CORRECT AND COMPLETE TO THE BEST OF MY KNOWLEDGE AND BELIEF.

PROFESSIONAL LAND SURVEYOR

DATE 8-10-18

### TIE SKETCH

NOTE: THE CORNER FALLS 6'± NORTH OF THE CENTERLINE OF FUR AVE.



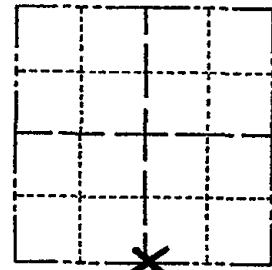
- SET 3/4" x 18" IRON REBAR, 1.50#/FT
- FOUND 3/4" IRON ROD
- FOUND 1-1/4" O.D. IRON PIPE
- ◎ FOUND 2-3/8" O.D. IRON PIPE
- ⊕ FOUND HARRISON MONUMENT (BROKEN-TOP)
- ↗ STEEL FENCE POST
- ↖ VINYL "T" POST

ADAMS COUNTY

Survey Monument Record

TYPE OF MONUMENT: 20" HARRISON
STATE PLANE COORDINATES: N
E
ELEVATION - M.S.L. DATUM:
THETA ANGLE:
FIELD BOOK: 109 PAGE 54

CORNER NO. 115
SECTION 25
TOWN 15
RANGE 6



LOCATION (Indicated by 'X')

SEAL:



BASIS FOR MONUMENT LOCATION

(Use reverse side if necessary)

Show info such as: History of corner, with reference to Vol. and pg, dates, surveyor; exact description of monument replaced; if location computed, by taped or EDM traverse; landowner remarks, etc.

This corner monumented by Co. Surveyor Mullen in 1971 but was disputed. Railroad spike set here by Midstates was accepted as correct and monumented after analyzing an EDM traverse of the southeast quarter of the entire town. All possession lines, original notes, monuments found, and old field notes taken into consideration. Harrison set by Mullen removed and replaced with a 2" pipe. This point falls in a road cut, so no excavation was attempted.

CORNER O.K. 10-13-76 JS-SS
" " 1-16-86 GR-SS

ALL OK 1-31-91 KE-JG
ADD 2 TIES 1-16-96 JC-SS

CERTIFIED CORRECT:

Signature of Anthony B. Kiedrowski, Registered Land Surveyor

DATE: 12/27/73

TIE SKETCH 2-6-01 JG OK 3-13-06 1 CORNER - 4 REMAIN
01-10-11 GR-SS GK

(Show at least four ties)

