

33  
SECTION

15  
TOWN

06  
RANGE

# ADAMS COUNTY

COUNTY CORNER NO: 117

ROMPORTOL ID: 41506332000

## PUBLIC LAND SURVEY MONUMENT RECORD

TYPE OF MONUMENT: HARRISON  
ADAMS COUNTY COORDINATES, NAD 83 (2007)

N. 135554.168

E. 541850.862

ELEVATION-      DATUM     

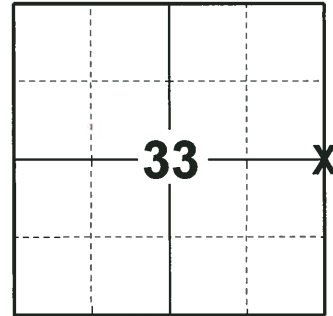
FIELD WORK DATE: 07/17/2018

### BASIS FOR MONUMENT LOCATION

1980 - PLS 1478 CALCULATED POSITION EQUIDISTANT AND ON LINE BETWEEN ADJACENT SECTION CORNERS. NO PREVIOUS MONUMENTATION WAS FOUND. NO RECORD OF ANY MONUMENTATION SUBSEQUENT TO THE ORIGINAL WAS FOUND. SET HARRISON AT CALCULATED POSITION AND TIED OUT.

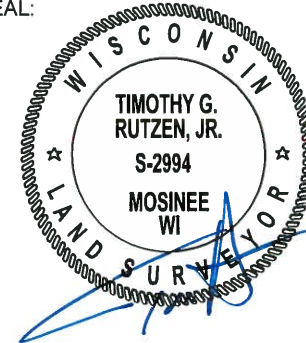
1999 - PLS 1274 FOUND HARRISON MONUMENT AND ALL TIES.

2018 - PLS 2994 FOUND A HARRISON MONUMENT 4" ABOVE THE GROUND SURFACE. FOUND NO EVIDENCE OF ANY OF THE TIES OR WITNESSES. AFTER FURTHER REVIEW, THE CORNER FALLS 25± NORTH FROM BEING EQUIDISTANT AND 23± EAST FROM BEING ON LINE. ACCEPTED THE HARRISON MONUMENT AS THE BEST EVIDENCE OF THE CORNER LOCATION. SET 4 NEW TIES AND MEASURED TO THE TIES.



LOCATION  
(INDICATE CORNER BY "X")

SEAL:

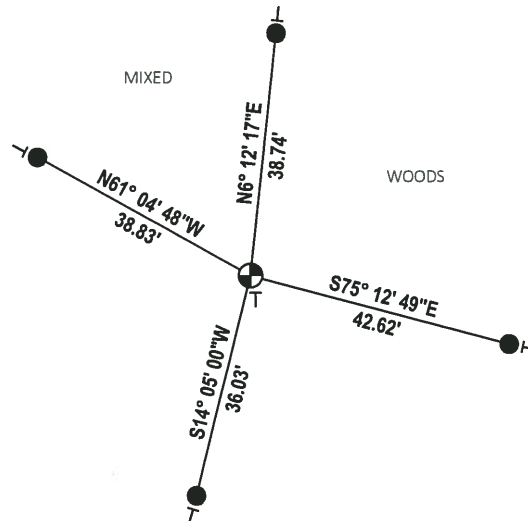
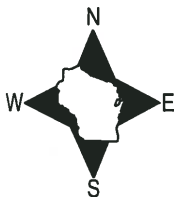


DATA SHOWN HERE ON THIS TIE SHEET IS CORRECT AND COMPLETE TO THE BEST OF MY KNOWLEDGE AND BELIEF.

PROFESSIONAL LAND SURVEYOR

DATE 8-10-18

### - TIE SKETCH

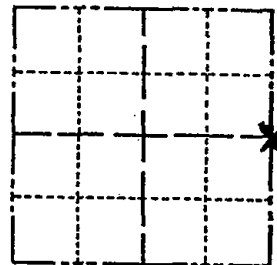


- SET 3/4" x 18" IRON REBAR, 1.50#/FT
- ⊕ FOUND HARRISON MONUMENT
- VINYL "T" POST

# Government Land Corner Certificate

ADAMS County  
 TYPE OF MONUMENT: Harrison  
 STATE PLANE COORDINATES: N \_\_\_\_\_  
 E \_\_\_\_\_  
 ELEVATION — M.S.L. DATUM: \_\_\_\_\_  
 THETA ANGLE: \_\_\_\_\_  
 FIELD BOOK: 54 PAGE 64  
 DRAWN BY: G. Rhinehart

CORNER NO. 117  
 SECTION 33  
 TOWN 15  
 RANGE 6



LOCATION  
 (Indicated by 'X')

## BASIS FOR MONUMENT LOCATION

Show info such as: History of corner, with reference to Vol. and pg., dates, surveyor; exact description of monument replaced; if location computed, by taped or EDM traverse; landowner remarks, etc. (Use reverse side if necessary)

Set corner equidistant and on line between adjacent section corners. No evidence of any previous monumentation was found. No record of any monumentation subsequent to the original was found.

SEAL:



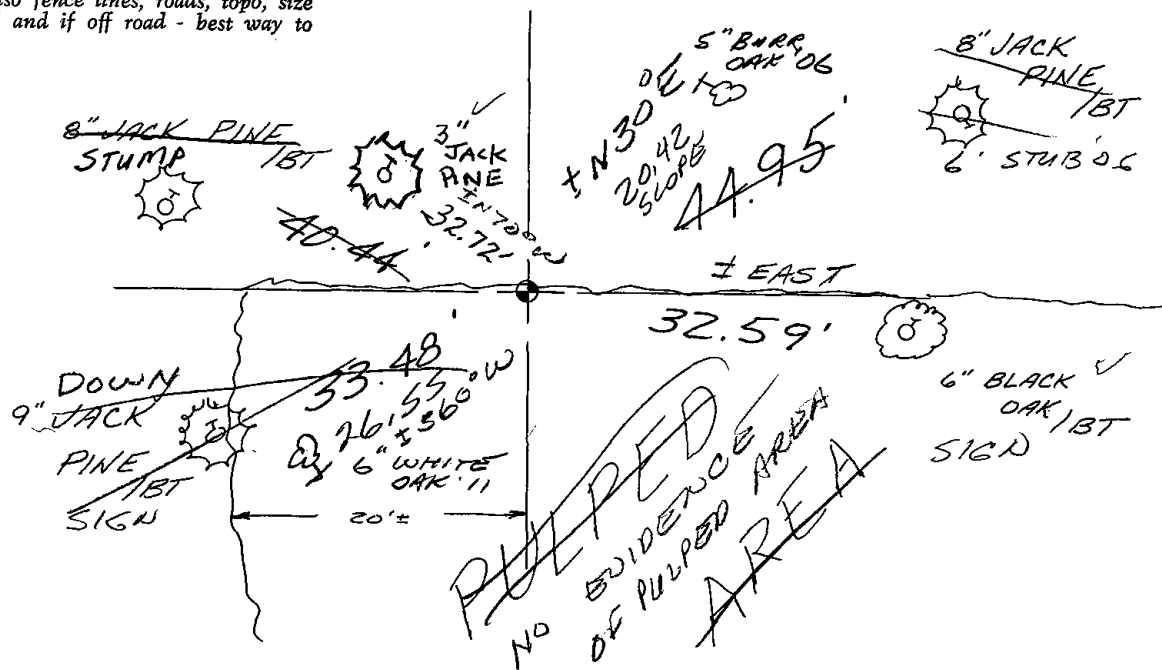
DATA SHOWN HERE ON  
 CERTIFIED CORRECT:

*Gregory P. Rhinehart*  
 Registered Land Surveyor

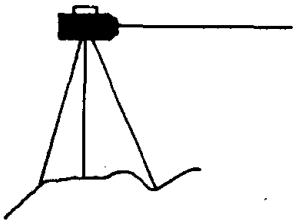
DATE: 4/2/80

## TIE SKETCH

Show at least four ties, also fence lines, roads, topo, size and type of witness trees and if off road - best way to arrive at corner.







# BRENEMAN'S BLUFFVIEW LAND SURVEYING SERVICES



E 12865 C. T. H. W  
BARABOO, WISCONSIN, 53913  
PHONE 608-356-8780

I hereby certify that I have found the cast iron Harrison monument, and  
ties, representing the E.  $\frac{1}{4}$  corner, of Section 33,  
Township 15 North, Range 6 East, Town of Springville,  
County of Adams, State of Wisconsin, as established  
by Gregory P. Rhinehart, dated 4-2-1980, and all  
points are still intact.

  
JOHN A. BRENEMAN - R.L.S #1274

08-26-1999  
Date

