

34 SECTION 15 TOWN 06 RANGE

ADAMS COUNTY

COUNTY CORNER NO: 129
ROMPORTOL ID: 41506340000

PUBLIC LAND SURVEY MONUMENT RECORD

TYPE OF MONUMENT: HARRISON
ADAMS COUNTY COORDINATES, NAD 83 (2007)

N. 132898.064

E. 547148.364

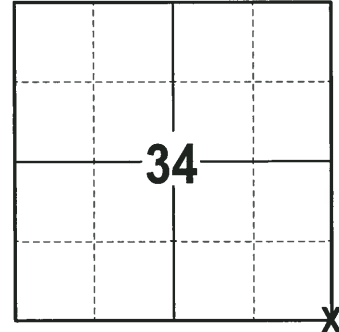
ELEVATION- - - DATUM - -

FIELD WORK DATE: 09/20/2017

BASIS FOR MONUMENT LOCATION

1974 - PLS 1103 RE-TIED EXISTING HARRISON MONUMENT IN MIDDLE OF CONSTRUCTION AREA. ALL OF THE TIES THAT ARE ON THE ORIGINAL TIE SHEET HAVE BEEN DESTROYED FROM THE WIDENING OF THE INTERSECTION OF GALE AVENUE AND 9TH AVENUE. HARRISON WAS ORIGINALLY SET AT A 3/4"X24" IRON ROD FOUND WHEN EXCAVATING WITH A BACKHOE.

2017 - PLS 2994 FOUND A HARRISON MONUMENT 1" BELOW THE ROAD SURFACE, 3 TIES AND 1 WITNESS. THE MONUMENT AGREES WITH THE EXISTING TIES AND WITNESS. ACCEPTED THE HARRISON MONUMENT AS THE CORNER LOCATION. SET 2 NEW TIES AND MEASURED TO THE TIES AND WITNESS.



LOCATION
(INDICATE CORNER BY "X")

SEAL:



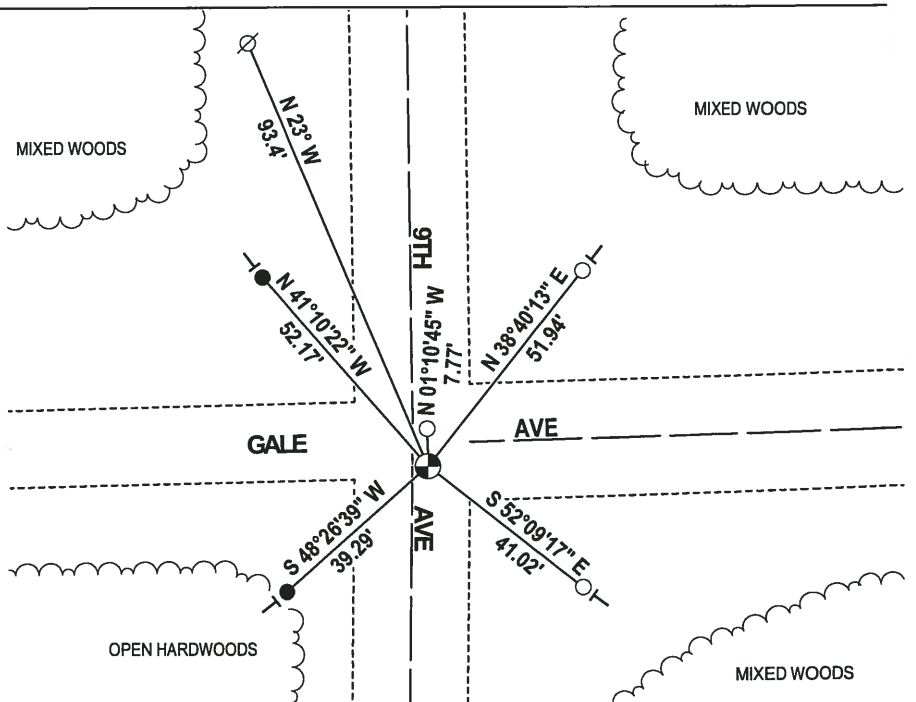
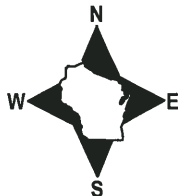
DATA SHOWN HERE ON THIS TIE SHEET IS CORRECT AND COMPLETE TO THE BEST OF MY KNOWLEDGE AND BELIEF.

PROFESSIONAL LAND SURVEYOR

DATE 11-15-17

- TIE SKETCH

NOTE: THE CORNER FALLS 3± EAST OF THE CENTERLINE OF 9TH AVE AND 5± SOUTH OF THE CENTERLINE OF GALE AVE.



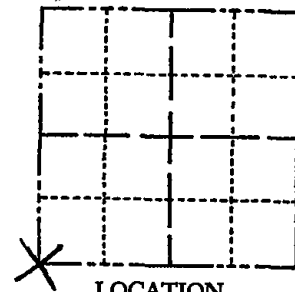
- 3/4" x 18" IRON REBAR SET, 1.50#/FT
- 3/4" IRON ROD FOUND
- ⊙ HARRISON FOUND
- ⊗ WITNESS POWER POLE
- VINYL "T" POST

ADAMS COUNTY

Survey Monument Record

TYPE OF MONUMENT: Harrison Monument
 STATE PLANE COORDINATES: N _____
 E _____
 ELEVATION — M.S.L. DATUM: _____
 THETA ANGLE: _____
 FIELD BOOK: _____ PAGE _____

CORNER NO. 343
 SECTION 35
 TOWN 15
 RANGE 6



LOCATION
(Indicated by 'X')

SEAL:

BASIS FOR MONUMENT LOCATION

(Use reverse side if necessary)

Show info such as: History of corner, with reference to Vol. and pg, dates, surveyor; exact description of monument replaced; if location computed, by taped or EDM traverse; landowner remarks, etc.

Re-tied existing Harrison Monument in middle of construction area. All ties on original tie sheet are destroyed from the widening of the intersection of Gale Avenue and 9th Avenue.

Harrison originally set at a 3/4" x 24" iron rod found when excavating with a backhoe.

OWNER O.K. 10-19-76 JS-SS



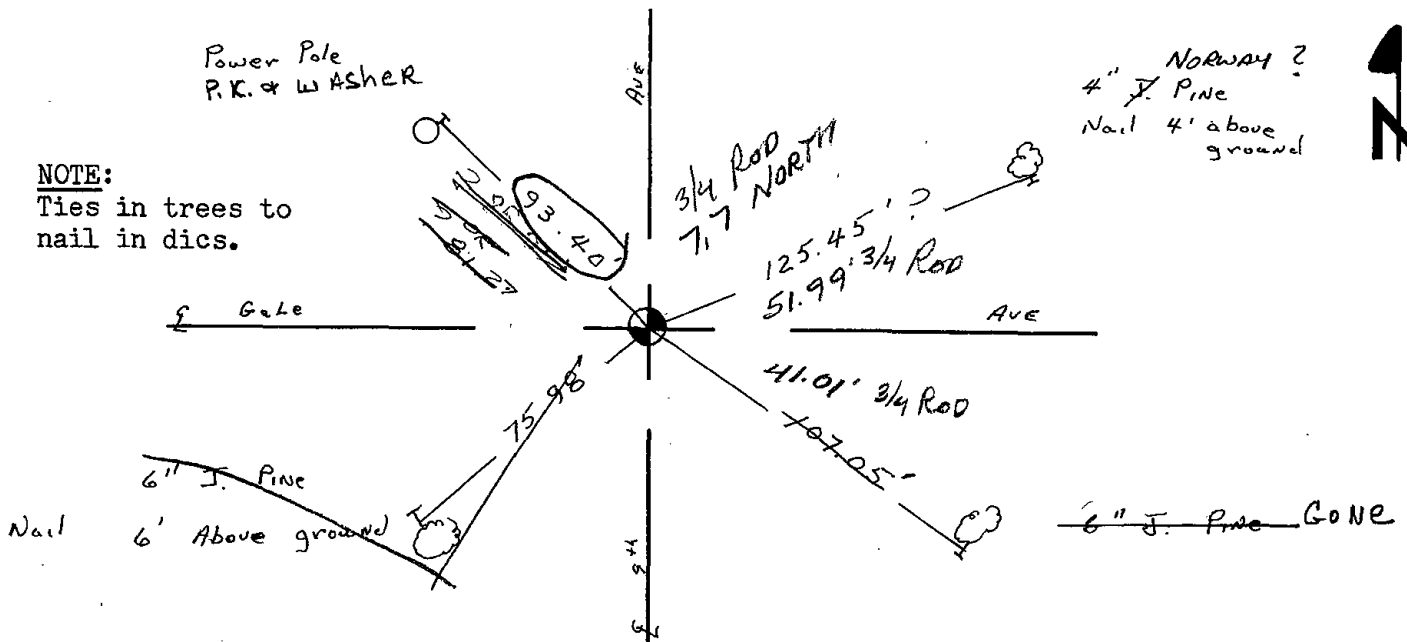
CERTIFIED CORRECT:

Dale C. Hagen
Registered Land Surveyor

DATE: July 30, 1974

TIE SKETCH

(Show at least four ties)



NOTE:

Ties in trees to nail in dics.