

PUBLIC LAND SURVEY MONUMENT RECORD

TYPE OF MONUMENT: HARRISON
 ADAMS COUNTY COORDINATES, NAD 83 (2007)

N. 164727.322

E. 560108.431

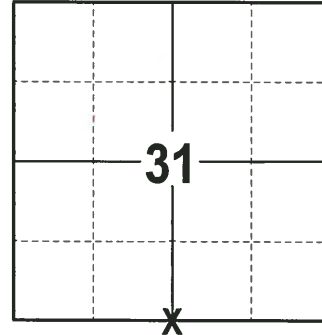
ELEVATION- DATUM

FIELD WORK DATE: 12/13/2017

BASIS FOR MONUMENT LOCATION

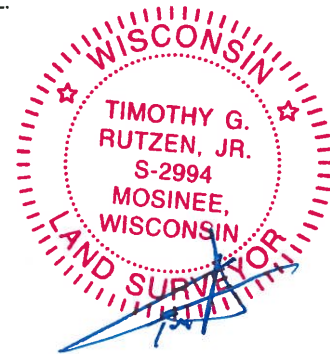
1974 - PLS 878 REPLACED A 2" IRON PIPE WITH THE TOP 20" OF A HARRISON MONUMENT AND TIED OUT. NOTE THIS POINT WAS USED IN A SURVEY OF ROCKRIDGE MEADOWS SUBDIVISION.

2017 - PLS 2994 FOUND A HARRISON MONUMENT 2" BELOW THE GROUND SURFACE AND 3 PROPERTY IRONS (1 USED AS A TIE). THE MONUMENT AGREES WITH THE EXISTING PROPERTY IRON. ACCEPTED THE HARRISON MONUMENT AS THE CORNER LOCATION. SET 2 NEW TIES AND MEASURED TO THE TIES AND PROPERTY IRONS.



LOCATION
 (INDICATE CORNER BY "X")

SEAL:



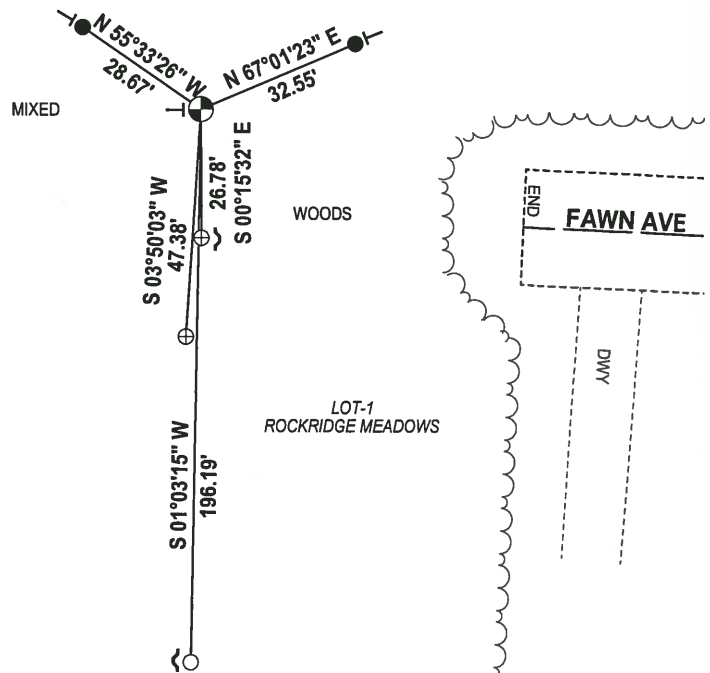
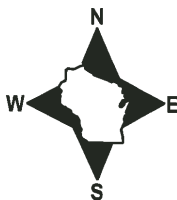
DATA SHOWN HERE ON THIS TIE SHEET IS CORRECT AND COMPLETE TO THE BEST OF MY KNOWLEDGE AND BELIEF.

PROFESSIONAL LAND SURVEYOR

DATE 1-4-18

- TIE SKETCH

NOTE: THE CORNER FALLS 21'± NORTH OF THE CENTERLINE OF FAWN AVE AND 69'± WEST OF THE END OF FAWN AVE.



- 3/4" x 18" IRON REBAR SET, 1.50#/FT
- 1-1/4" O.D. IRON PIPE FOUND
- ⊕ 2" O.D. IRON PIPE FOUND
- ⊙ HARRISON FOUND
- ~ STEEL FENCE POST
- ⊖ VINYL "T" POST

ADAMS COUNTY

Survey Monument Record

TYPE OF MONUMENT: Top 20" of Harrison

STATE PLANE COORDINATES: N _____

E _____

ELEVATION — M.S.L. DATUM: _____

THETA ANGLE: _____

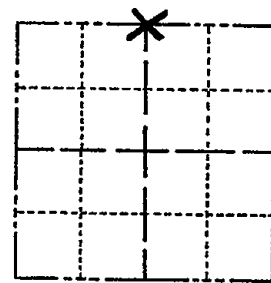
FIELD BOOK: _____ PAGE _____

CORNER NO. 406 (2)

SECTION 6

TOWN 15

RANGE 7



LOCATION (Indicated by 'X')

BASIS FOR MONUMENT LOCATION

(Use reverse side if necessary)

Show info such as: History of corner, with reference to Vol. and pg, dates, surveyor; exact description of monument replaced; if location computed, by taped or EDM traverse; landowner remarks, etc.

Replaced 2" iron pipe with Harrison monument. This point used in survey of Rockridge Meadows Subd.

CORNER O.K. 10-28-76 RD-SS
" " 2-3-86 GR-SS

ALL OK 4-1-91 GR-JG

1 NEW TIE 3-7-96 JG-SS

MON. IS 14" BELOW SURFACE

(TIES OK, 20" BLK OAK HAS FALLEN OVER MONUMENT, NEED TO BE CUT UP, METAL POST W/ DND SIGN AT CORNER 2-16-01, JG)

TREE STILL NEED TO BE CUT UP THE REST IS STILL OK, 6-8-06-JG

SEAL:



CERTIFIED CORRECT:

Anthony B. Kiedrowski
Registered Land Surveyor

DATE: 6/6/74

TIE SKETCH

(Show at least four ties)

