

PUBLIC LAND SURVEY MONUMENT RECORD

TYPE OF MONUMENT: HARRISON
 ADAMS COUNTY COORDINATES, NAD 83 (2007)

N. 164770.666

E. 583807.657

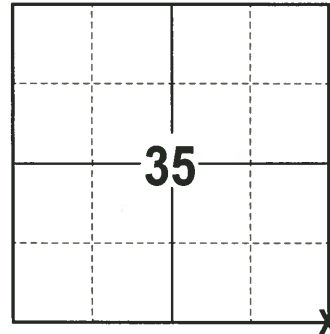
ELEVATION- DATUM

FIELD WORK DATE: 12/13/2017

BASIS FOR MONUMENT LOCATION

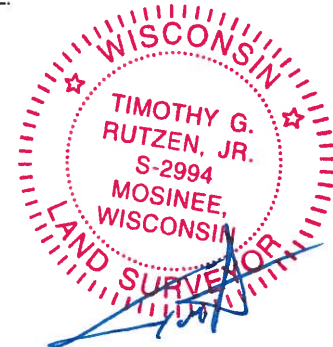
1974 - PLS 970 CORNER SET AT THE INTERSECTION OF AN EAST-WEST FENCE LINE AND WHAT APPEARED TO BE THE REMAINS OF AN OLD NORTH-SOUTH FENCE LINE. DIGGING AT THIS LOCATION RECOVERED WHAT APPEARED TO BE AN OLD WOODEN FENCE POST. THIS CORNER WAS INCLUDED IN AN EXTENSIVE E.D.M. TRAVERSE. SET A HARRISON MONUMENT AT THE OLD WOODEN POST LOCATION AND TIED OUT.

2017 - PLS 2994 FOUND A HARRISON MONUMENT FLUSH WITH THE GROUND SURFACE AND 3 PROPERTY IRONS (1 PROPERTY IRON WAS USED AS A TIE). THE MONUMENT AGREES WITH THE EXISTING TIE. ACCEPTED THE HARRISON MONUMENT AS THE CORNER LOCATION. SET 3 NEW TIES AND MEASURED TO THE TIES AND PROPERTY IRONS.



LOCATION
 (INDICATE CORNER BY "X")

SEAL:



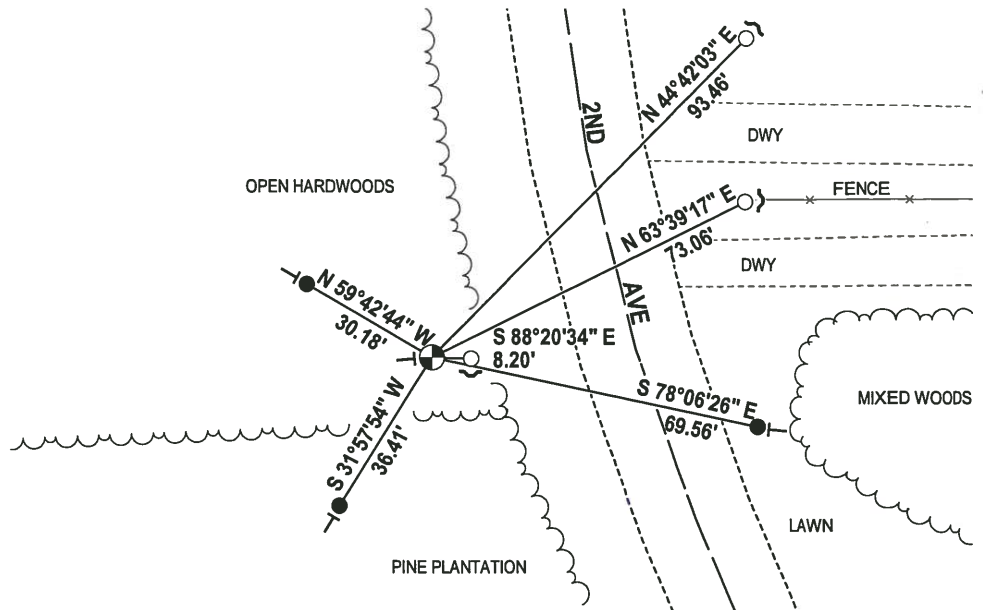
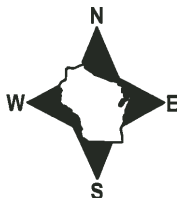
DATA SHOWN HERE ON THIS TIE SHEET IS CORRECT AND COMPLETE TO THE BEST OF MY KNOWLEDGE AND BELIEF.

PROFESSIONAL LAND SURVEYOR

DATE 1-4-18

- TIE SKETCH

NOTE: THE CORNER FALLS 42± WEST OF THE CENTERLINE OF 2ND AVE.



- 3/4" x 18" IRON REBAR SET, 1.50#/FT
- 3/4" IRON ROD FOUND
- ⊕ HARRISON FOUND
- ~ STEEL FENCE POST
- ⊥ VINYL "T" POST

ADAMS COUNTY

Survey Monument Record

TYPE OF MONUMENT: Harrison

STATE PLANE COORDINATES: N _____

E _____

ELEVATION — M.S.L. DATUM: _____

THETA ANGLE: _____

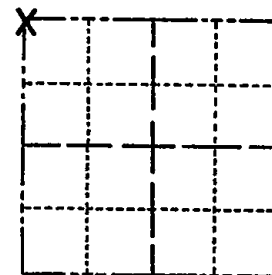
FIELD BOOK: S-1063 PAGE _____

CORNER NO. 513

SECTION 1

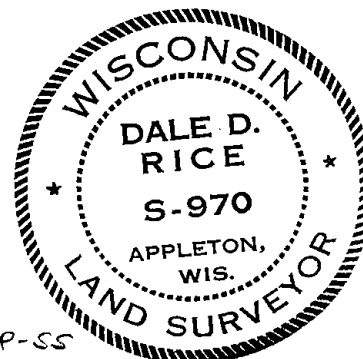
TOWN 15

RANGE 7



LOCATION
(Indicated by 'X')

SEAL:



BASIS FOR MONUMENT LOCATION

(Use reverse side if necessary)

Show info such as: History of corner, with reference to Vol. and pg, dates, surveyor; exact description of monument replaced; if location computed, by taped or EDM traverse; landowner remarks, etc.

CORNER SET AT INTERSECTIONS OF AN EAST-WEST FENCE LINE AND WHAT APPEARED TO BE THE REMAINS OF AN OLD NORTH-SOUTH FENCE LINE.

DIGGING AT THIS LOCATION RECOVERED WHAT APPEARED TO BE AN OLD WOODEN FENCE POST.

THIS CORNER WAS INCLUDED IN AN EXTENSIVE E.D.M. TRAVERSE.

Corner & ties O.K. - trees scribed BT - 4-1-76 GR-SS
" " " " 2-19-86 GR-SS
" " " " 4-1-91 GR-JG

1 NEW TIE 3-11-96 SS

1-NEW TIE 3-8-06 - JG

3-15-11 SS OK

CERTIFIED CORRECT:

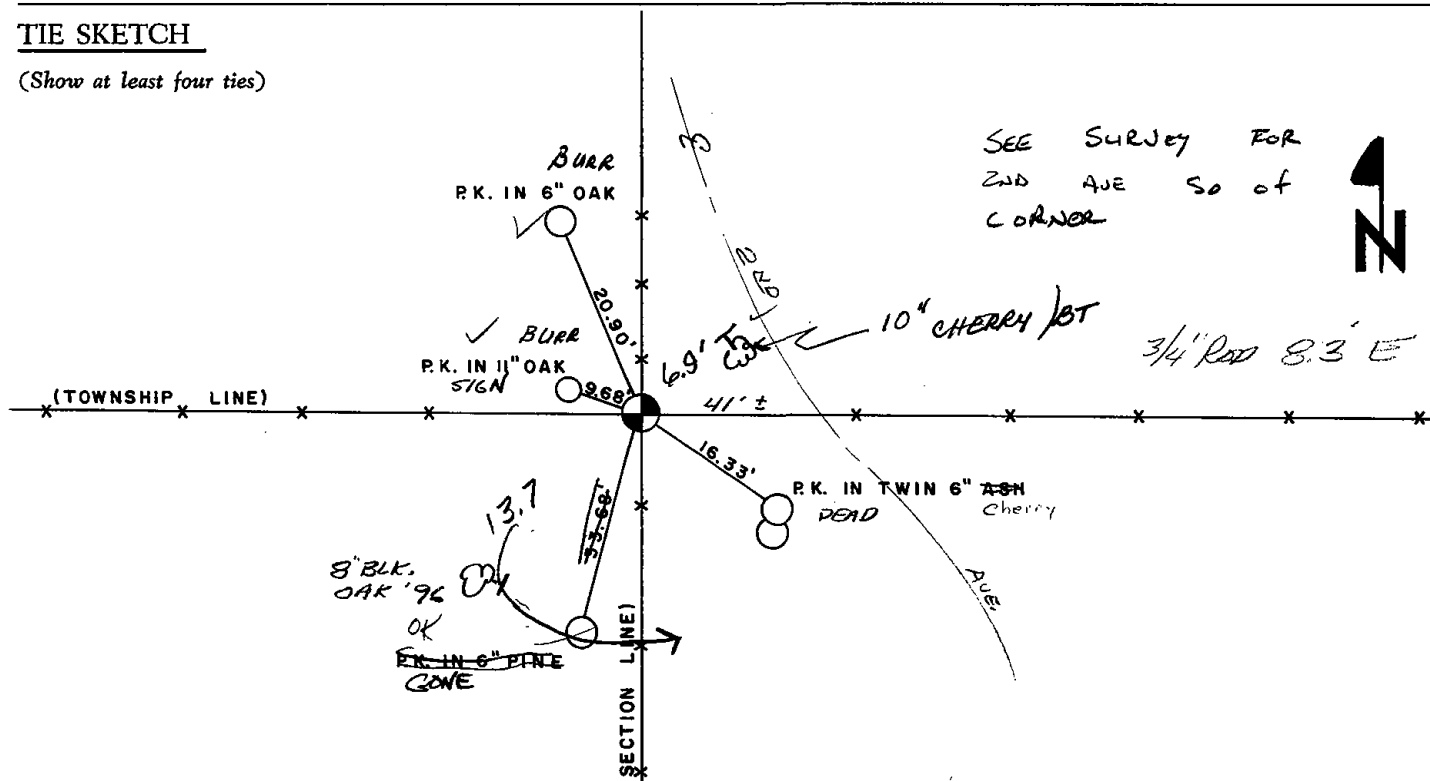
Dale D. Rice

Registered Land Surveyor

DATE: 12/13/74

TIE SKETCH

(Show at least four ties)



SEE SURVEY FOR
2ND AVE SO OF
CORNER



ADAMS COUNTY

Survey Monument Record

TYPE OF MONUMENT: Harrison

STATE PLANE COORDINATES: N _____

E _____

ELEVATION — M.S.L. DATUM: _____

THETA ANGLE: _____

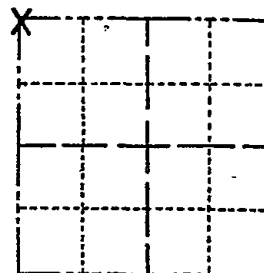
FIELD BOOK: S-1063 PAGE _____

CORNER NO. 513

SECTION 1

TOWN 15

RANGE 7



LOCATION
(Indicated by 'X')

SEAL:



BASIS FOR MONUMENT LOCATION

(Use reverse side if necessary)

Show info such as: History of corner, with reference to Vol. and pg, dates, surveyor; exact description of monument replaced; if location computed, by taped or EDM traverse; landowner remarks, etc.

CORNER SET AT INTERSECTIONS OF AN EAST-WEST FENCE LINE AND WHAT APPEARED TO BE THE REMAINS OF AN OLD NORTH-SOUTH FENCE LINE.

DIGGING AT THIS LOCATION RECOVERED WHAT APPEARED TO BE AN OLD WOODEN FENCE POST.

THIS CORNER WAS INCLUDED IN AN EXTENSIVE E.D.M. TRAVERSE.

- 1 NEW TIE 3-11-96 SS
- 1 NEW TIE 3-8-96 - Jo
- TWO ON 3-24-08 - MC
- 4-1-70 64-55
- 2-19-86 64-55
- 4-1-91 64-55

CERTIFIED CORRECT:

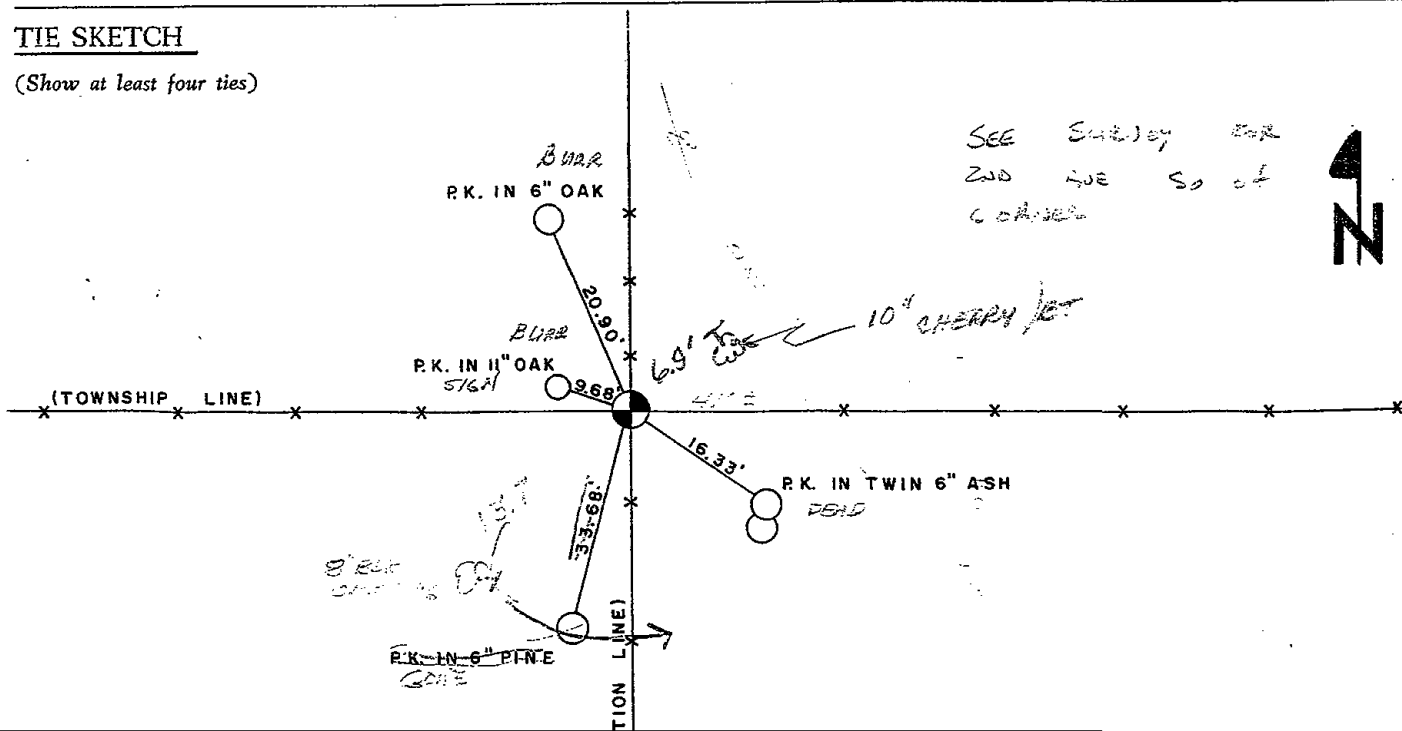
Dale D. Rice

Registered Land Surveyor

DATE: 12/13/74

TIE SKETCH

(Show at least four ties)



SEE Survey FOR
2ND TIE So of
CORNER

