

04
SECTION

15
TOWN

07
RANGE

ADAMS COUNTY

COUNTY CORNER NO: 17

ROMPORTOL ID: 41406042000

PUBLIC LAND SURVEY MONUMENT RECORD

TYPE OF MONUMENT: HARRISON (BROKEN-TOP)
ADAMS COUNTY COORDINATES, NAD 83 (2007)

N. 162000.827

E. 573216.435

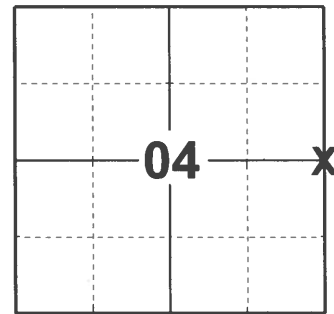
ELEVATION- _____ DATUM _____

FIELD WORK DATE: 03/02/2021

BASIS FOR MONUMENT LOCATION

1980 - PLS 584 DUG FOR CORNER, FOUND EVIDENCE OF IRON PIN. SET CORNER AT THE PIN AND WITNESSED THE SAME.

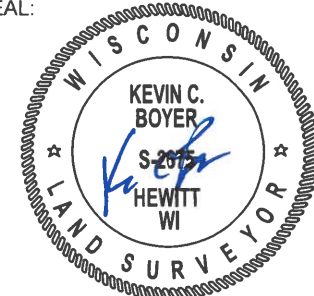
2021 - PLS 2675 FOUND A HARRISON (BROKEN-TOP) MONUMENT IN THE ROAD SURFACE AND DID NOT RECOVER ANY EXISTING TIES OR WITNESSES. ACCEPTED THE HARRISON (BROKEN-TOP) AS THE CORNER LOCATION AND SET 4 NEW TIES.



LOCATION

(INDICATE CORNER BY "X")

SEAL:

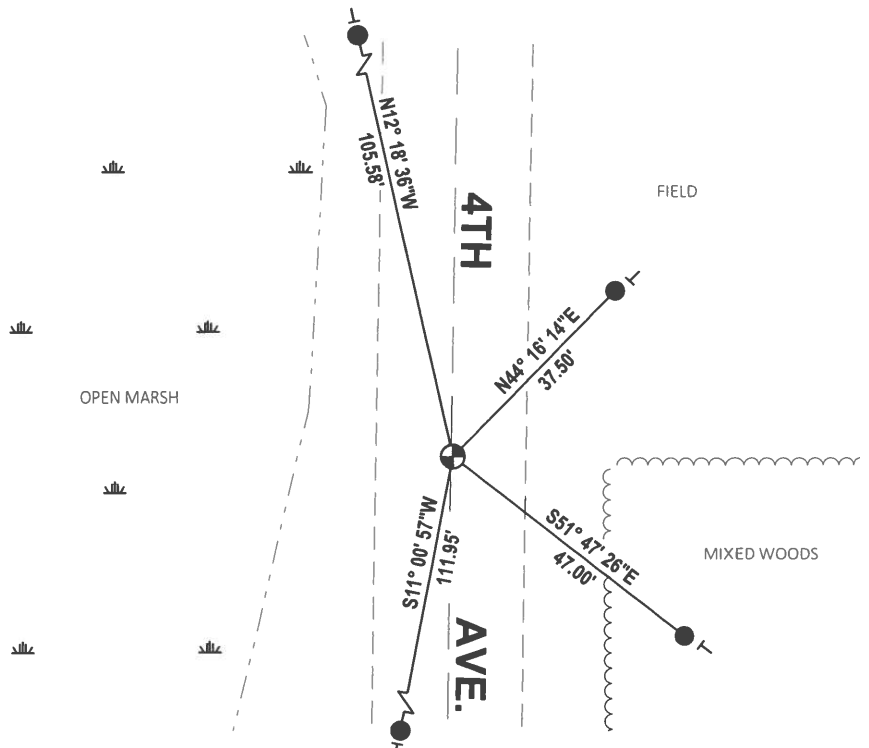
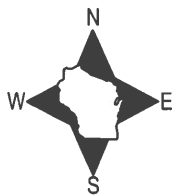


DATA SHOWN HERE ON THIS TIE SHEET IS CORRECT AND COMPLETE TO THE BEST OF MY KNOWLEDGE AND BELIEF.

PROFESSIONAL LAND SURVEYOR

DATE 5/20/21

- TIE SKETCH

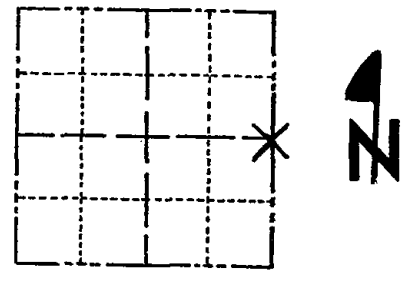


- SET 3/4" x 18" IRON REBAR, 1.50#/FT
- ⊕ FOUND HARRISON (BROKEN-TOP) MONUMENT
- ┆ VINYL "T" POST

Government Land Corner Certificate

ADAMS County
 TYPE OF MONUMENT: Harrison
 STATE PLANE COORDINATES: N _____
 E _____
 ELEVATION — M.S.L. DATUM: _____
 THETA ANGLE: _____
 FIELD BOOK: 57 PAGE 116
 DRAWN BY: S. Haumschild

CORNER NO. 17
 SECTION 4
 TOWN 15
 RANGE 7



LOCATION
(Indicated by 'X')

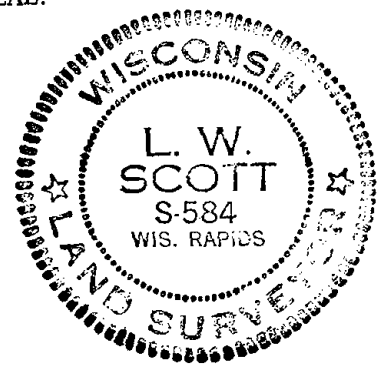
BASIS FOR MONUMENT LOCATION

Show info such as: History of corner, with reference to Vol. and pg., dates, surveyor; exact description of monument replaced; if location computed, by taped or EDM traverse; landowner remarks, etc. (Use reverse side if necessary)

with backhoe

Dug for corner, evidence found, iron pin.
Set corner at the pin and witnessed the same.

SEAL:



DATA SHOWN HERE ON
CERTIFIED CORRECT:

L. W. Scott
Registered Land Surveyor

DATE: 8/25/80

TIE SKETCH

Show at least four ties, also fence lines, roads, topo, size and type of witness trees and if off road - best way to arrive at corner.

