

03
SECTION

15
TOWN

07
RANGE

ADAMS COUNTY

COUNTY CORNER NO.: 18

ROMPORTOL ID: 41507032000

PUBLIC LAND SURVEY MONUMENT RECORD

TYPE OF MONUMENT: 2" ANGLE IRON

ADAMS COUNTY COORDINATES, NAD 83 (2007)

N. 161947.518

E. 578480.486

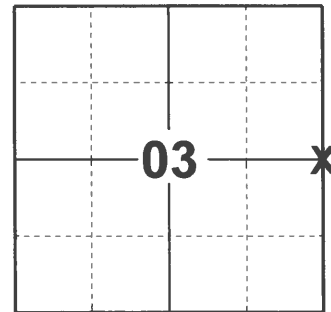
ELEVATION- _____ DATUM _____

FIELD WORK DATE: 03/02/2021

BASIS FOR MONUMENT LOCATION

1980 - PLS 1478 ACCEPTED FENCE CORNER POST AS BEST EVIDENCE FOR LOCATION OF THIS CORNER. THIS POINT FALLS 2.11 FEET NORTH AND 10.55 FEET EAST OF THE PROPORTIONATE LOCATION. DUE TO THE CLOSENESS OF MEASURED DISTANCES TO ADJACENT CORNERS TO THE RECORDED ORIGINAL DISTANCES AND THE OBVIOUS CONTINUAL MAINTENANCE OF FENCES IN THE AREA THIS POINT WAS ACCEPTED OVER THE PROPORTIONATE LOCATION AS THE CORNER. NO RECORD OF MONUMENTATION SUBSEQUENT TO THE ORIGINAL WAS FOUND AND NO EVIDENCE OF ANY OTHER MONUMENTATION WAS FOUND.

2021 - PLS 2675 FOUND 2" ANGLE IRON FENCE CORNER AND 2 WITNESS TREES. THE MONUMENT AGREES WITH BOTH WITNESS TREES. ACCEPTED THE 2" ANGLE IRON AS THE CORNER LOCATION. SET 4 NEW TIES AND MEASURED TO THE EXISTING WITNESS TREES.



LOCATION

(INDICATE CORNER BY "X")

SEAL:

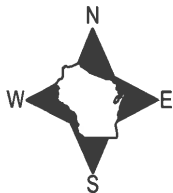


DATA SHOWN HERE ON THIS TIE SHEET IS CORRECT AND COMPLETE TO THE BEST OF MY KNOWLEDGE AND BELIEF.

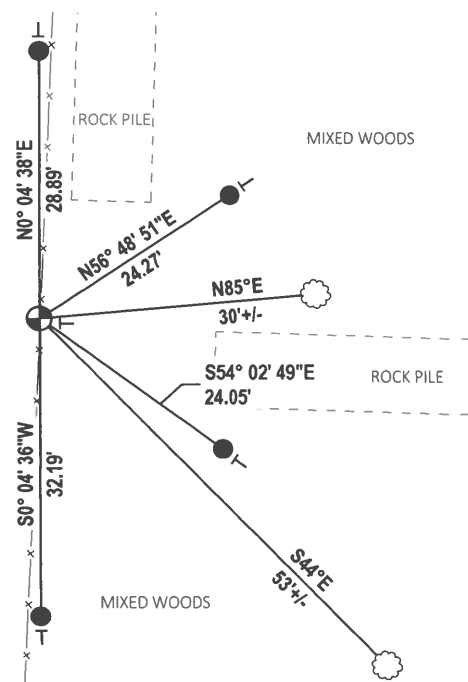
PROFESSIONAL LAND SURVEYOR

DATE 5/20/21

- TIE SKETCH



FIELD

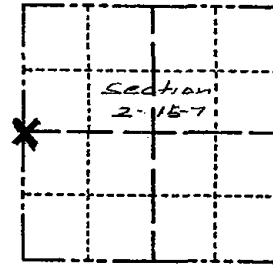


- SET 3/4" x 18" IRON REBAR, 1.50#/FT
- ⊙ FOUND 2" ANGLE IRON
- ┆ VINYL "T" POST
- ⊗ WITNESS TREE

Government Land Corner Certificate

ADAMS County
 TYPE OF MONUMENT: Existing steel Angle, set in concrete
 STATE PLANE COORDINATES: N _____
 E _____
 ELEVATION — M.S.L. DATUM: _____
 THETA ANGLE: _____
 FIELD BOOK: A-F 2 PAGE 79
 DRAWN BY: Gregory P. Rhinehart

CORNER NO. 18
 SECTION 2
 TOWN 15
 RANGE 7



LOCATION
 (Indicated by 'X')

SEAL:



BASIS FOR MONUMENT LOCATION

Show info such as: History of corner, with reference to Vol. and pg., dates, surveyor; exact description of monument replaced; if location computed, by taped or EDM traverse; landowner remarks, etc. (Use reverse side if necessary)

Accepted Fence corner post as best evidence for location of this corner. This point falls 2.11 feet north and 10.55 feet east of the proportionate location. Due to the closeness of measured distances to adjacent corners to the recorded original distances and the obvious continual maintenance of fences in the area this point was accepted over the proportionate location as the corner.

No record of monumentation subsequent of the original was found and no evidence of any other monumentation was found.

DATA SHOWN HERE ON
 CERTIFIED CORRECT:

Gregory P. Rhinehart
 Registered Land Surveyor

DATE: 10-4-80

TIE SKETCH

Show at least four ties, also fence lines, roads, topo, size and type of witness trees and if off road - best way to arrive at corner.

Note: Ties are to nail & disc.
 in blazed trees.

