

02
SECTION

15
TOWN

07
RANGE

ADAMS COUNTY

COUNTY CORNER NO: 19A

ROMPORTOL ID: 41507022020

PUBLIC LAND SURVEY MONUMENT RECORD

TYPE OF MONUMENT: 3/4" IRON ROD
ADAMS COUNTY COORDINATES, NAD 83 (2007)

N. 161948.541

E. 581118.723

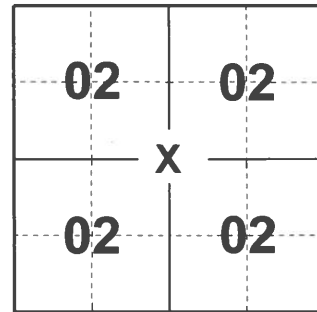
ELEVATION- DATUM

FIELD WORK DATE: 03/01/2021

BASIS FOR MONUMENT LOCATION

2006 - PLS 2357 LOCATED AND TIED TO THIS CORNER, WHICH WAS THEN TAKEN OUT DUE TO ROAD CONSTRUCTION. THEN REPLACED CORNER WITH A 3/4"X18" REBAR AFTER COMPLETION OF ROAD AND SET NEW TIES AS SHOWN.

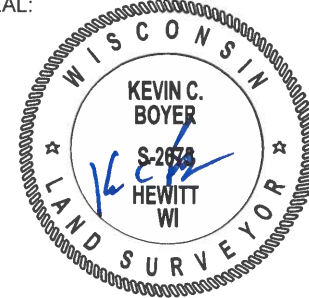
2021 - PLS 2675 FOUND A 3/4" IRON ROD 2'± BELOW THE ROAD SURFACE, 2 TIES, AND 1 WITNESS. THE MONUMENT AGREES WITH THE TIES AND WITNESS. ACCEPTED THE 3/4" IRON ROD AS THE CENTER OF SECTION. SET 4 NEW TIES AND MEASURED TO THE EXISTING TIES AND WITNESS TREES.



LOCATION

(INDICATE CORNER BY "X")

SEAL:



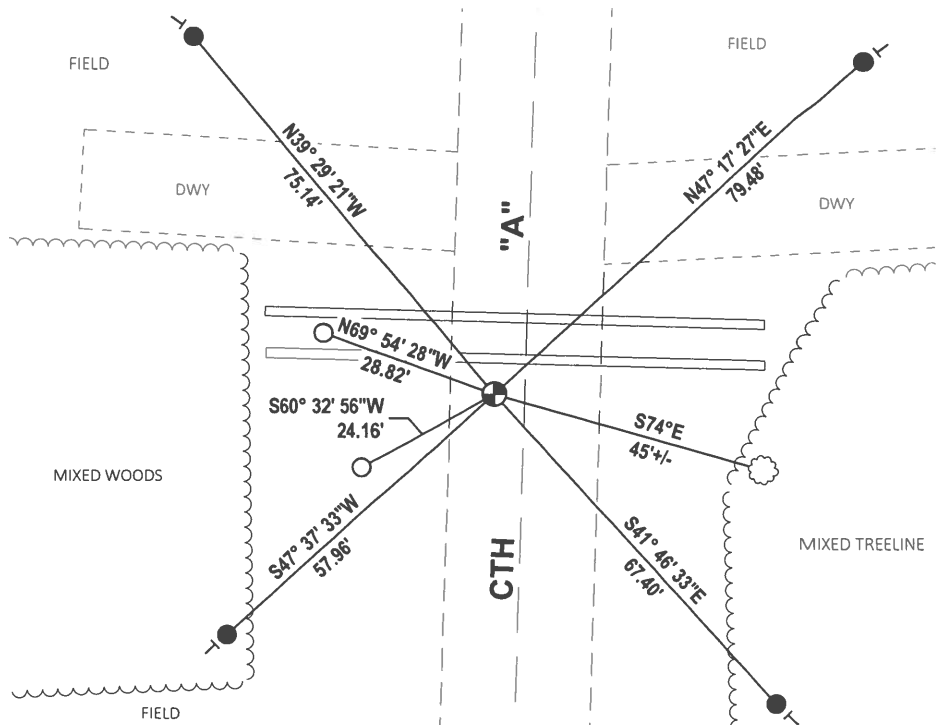
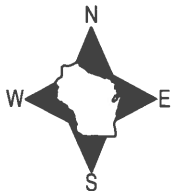
DATA SHOWN HERE ON THIS TIE SHEET IS CORRECT AND COMPLETE TO THE BEST OF MY KNOWLEDGE AND BELIEF.

PROFESSIONAL LAND SURVEYOR

DATE 5/20/21

- TIE SKETCH

NOTE: THE CORNER LANDS 5'± WEST OF CENTERLINE OF CTH "A".



- SET 3/4" x 18" IRON REBAR, 1.50#/FT
- FOUND 3/4" IRON ROD
- ⊕ FOUND 3/4" IRON ROD
- VINYL "T" POST
- ☼ WITNESS TREE