

ADAMS COUNTY

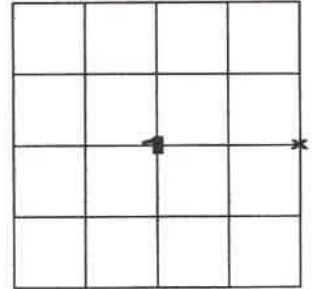
PUBLIC LAND SURVEY MONUMENT RECORD

Type of Monument Broken Harrison

Adams County Coordinates (NAD 83, 2011)

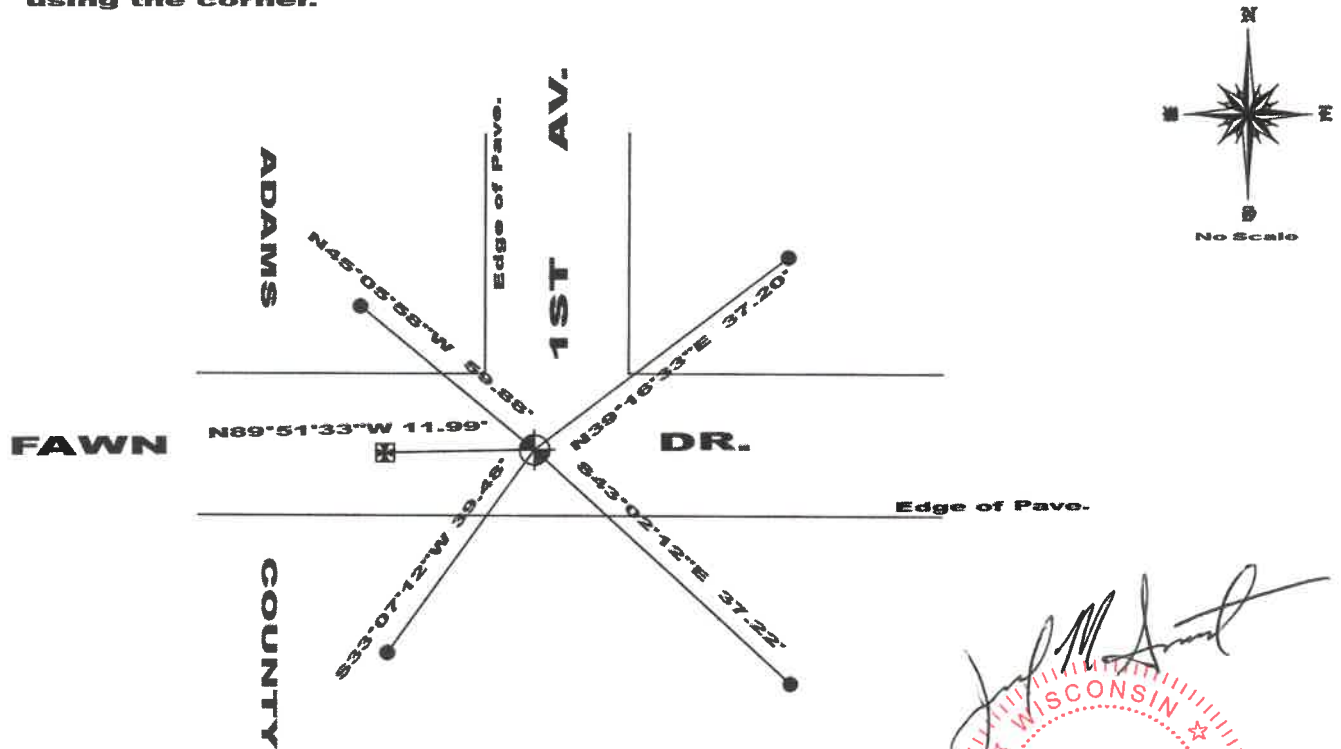
Northing 161970.432

Easting 589082.847



Corner History and Basis for Location

- 1974 - PLS 970 found no evidence of previous monumentation. Set Harrison on extension of N-S fence and 24.75 feet north of R/W fence.
- 1978 - PLS 1478 found Harrison monument with broken top 12.05 feet east of existing Harrison monument. Accepted found broken Harrison as it fit centerlines and a 1901 survey by A.J.Barrett County Surveyor.
- 2022 - PLS 1739 found both Harrison monuments. Accepted broken Harrison monument as correct for the reasons stated by PLS 1478 in 1978 and in consideration of multiple surveys in Adams and Marquette Counties using the corner.



Jerol M. Smart
 WISCONSIN
 Jerol M. Smart
 S-1739
 Montello
 WI
 LAND SURVEYOR
 APRIL 3, 2023

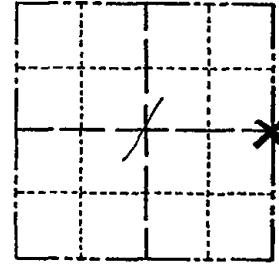
- Found broken Harrison monument
- Found Harrison monument
- Found 3/4" Iron rod

I, Jerol M. Smart, P.L.S., Adams County Surveyor, do hereby certify that the information shown hereon is correct and that I have fully complied with Wisconsin Statutes and Admin. code to the best of my knowledge and belief.

Government Land Corner Certificate

ADAMS County
 TYPE OF MONUMENT: HARRISON
 STATE PLANE COORDINATES: N _____
 E _____
 ELEVATION — M.S.L. DATUM: _____
 THETA ANGLE: _____
 FIELD BOOK: 66 PAGE 59
 DRAWN BY: JOHN S. KEDROWSKI

CORNER NO. 20
 SECTION 1
 TOWN 15 N.
 RANGE 7 E.



LOCATION
(Indicated by 'X')

BASIS FOR MONUMENT LOCATION

Show info such as: History of corner, with reference to Vol. and pg., dates, surveyor; exact description of monument replaced; if location computed, by taped or EDM traverse; landowner remarks, etc. (Use reverse side if necessary)

Found existing Harrison Monument, with top broken off, 12.05 feet east of a Harrison Monument set by Dale Rice, S-970. The monument found matches center-lines of the traveled ways and dimensions recorded in Adams County Surveyor Records, Vol. 1, pg. 2, by A. J. Barrett on June 6, 1901, and is more nearly on a straight line between adjacent section corners.

SEAL:



DATA SHOWN HERE ON
CERTIFIED CORRECT:

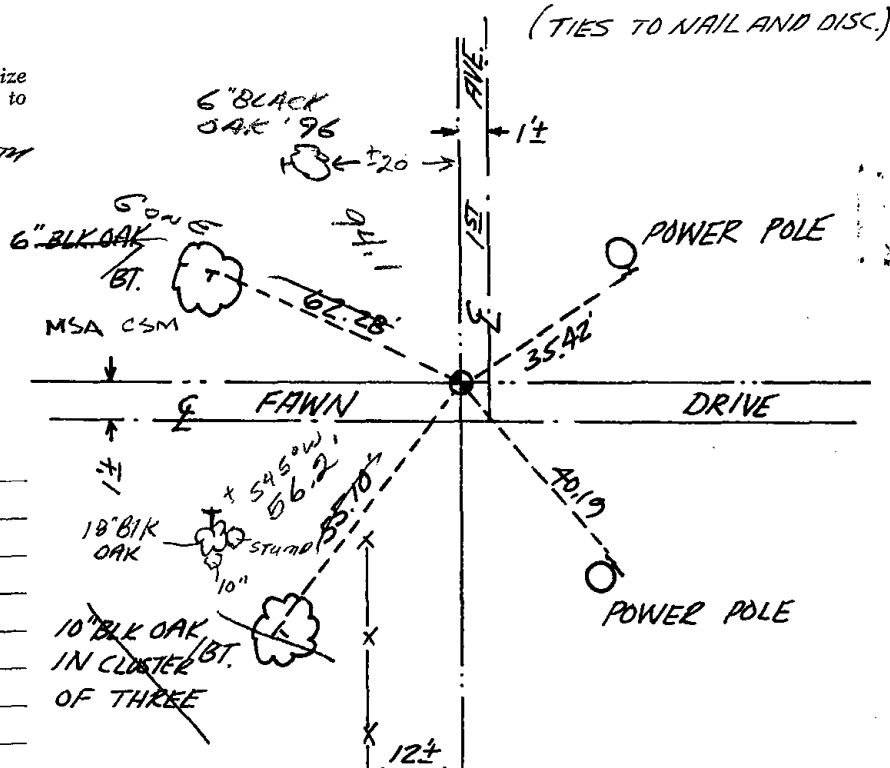
Gregory P Rhinehart
Registered Land Surveyor

DATE: Nov 17, 1978
for 21, 79

TIE SKETCH

Show at least four ties, also fence lines, roads, topo, size and type of witness trees' and if off road - best way to arrive at corner.

FOUND R.R. SPIKE FLUSH WITH ROAD SURFACE - MATCHES EXISTING TIES. 196



MAINTENANCE RECORD

Date	Init.	Remarks
9-15-81	NJ-LC	MON & TIES O.K
2-19-86	GR-SS	OK
4-1-91	GR-JG	ALL OK
3-11-96	SS	1 NEW TIE
2-21-01	MH-JG	ALL OK
3-8-06	JG	OK
3-15-11	SS	1 NEW TIE