

03
SECTION

15
TOWN

07
RANGE

ADAMS COUNTY

COUNTY CORNER NO: 29

ROMPORTOL ID: 41507030000

PUBLIC LAND SURVEY MONUMENT RECORD

TYPE OF MONUMENT: HARRISON
ADAMS COUNTY COORDINATES, NAD 83 (2007)

N. 159304.399

E. 578404.631

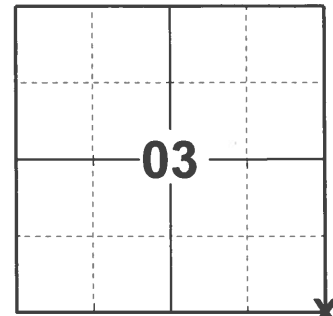
ELEVATION- _____ DATUM _____

FIELD WORK DATE: 03/02/2021

BASIS FOR MONUMENT LOCATION

1976 - PLS 922 CHECKED COUNTY SURVEY RECORDS FOR RESURVEYS AND FOUND THAT M.C. SMITH SET A STONE AT A FENCE CORNER. WE COULD NOT FIND THE STONE, SO WE ACCEPTED THE FENCE CORNER AS IT FIT EDM TRAVERSE OF SECTION GOOD.

2021 - PLS 2675 FOUND A HARRISON MONUMENT FLUSH WITH THE GROUND AND 1 TIE. THE MONUMENT AGREES WITH THE EXISTING TIE. ACCEPTED THE HARRISON AS THE CORNER LOCATION. SET 3 NEW TIES AND MEASURED TO THE EXISTING TIE.



LOCATION

(INDICATE CORNER BY "X")

SEAL:

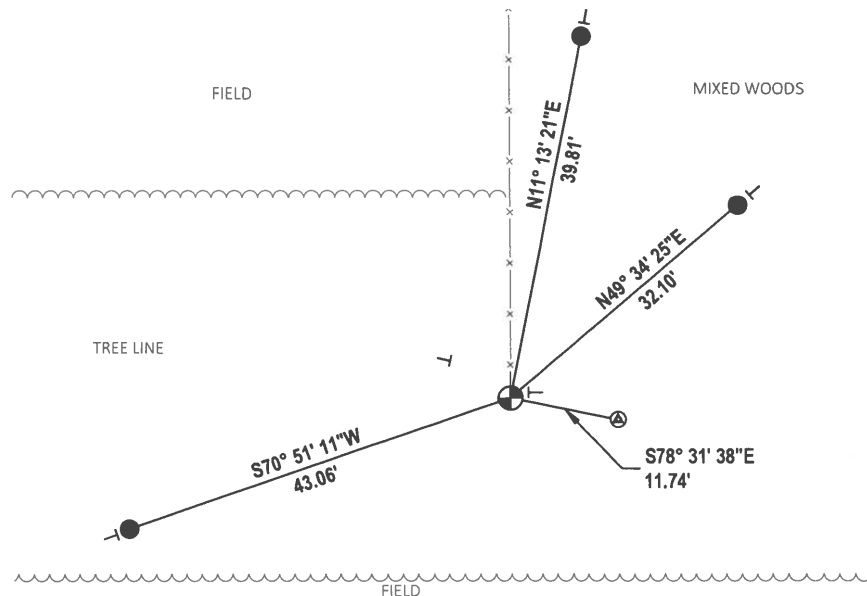
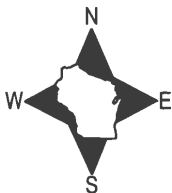


DATA SHOWN HERE ON THIS TIE SHEET IS CORRECT AND COMPLETE TO THE BEST OF MY KNOWLEDGE AND BELIEF.

PROFESSIONAL LAND SURVEYOR

DATE 5/20/21

- TIE SKETCH



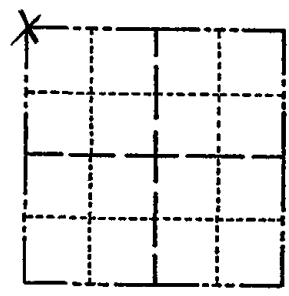
- SET 3/4" x 18" IRON REBAR, 1.50#/FT
- ⊙ FOUND RED BOULDER CHISEL "X"
- ⊕ FOUND HARRISON MONUMENT
- | VINYL "T" POST
- ⊙ WITNESS TREE

ADAMS COUNTY

Survey Monument Record

TYPE OF MONUMENT: 30' HARRISON
 STATE PLANE COORDINATES: N _____
 E _____
 ELEVATION — M.S.L. DATUM: _____
 THETA ANGLE: _____
 FIELD BOOK: _____ PAGE _____

CORNER NO. 925
 SECTION 11
 TOWN 15N
 RANGE 7E



LOCATION
(Indicated by 'X')

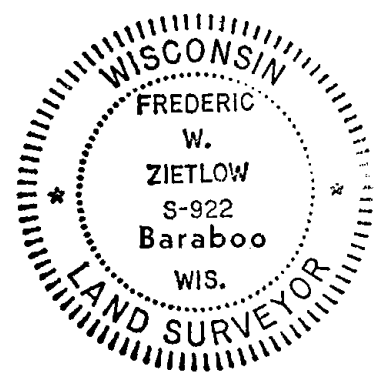
BASIS FOR MONUMENT LOCATION

(Use reverse side if necessary)

Show info such as: History of corner, with reference to Vol. and pg. dates, surveyor; exact description of monument replaced; if location computed, by taped or EDM traverse; landowner remarks, etc.

CHECKED COUNTY SURVEY RECORDS FOR RESURVEYS & FOUND THAT M.C. SMITH SET A STONE AT A FENCE CORNER. WE COULD NOT FIND THE STONE, SO WE ACCEPTED THE FENCE CORNER AS IT FIT EDM TRAVERSE OF SECTION GOOD MAINTENANCE RECORD

SEAL:



CERTIFIED CORRECT:
Frederic W. Zietlow
 Registered Land Surveyor
 DATE: MARCH 16, 1976

Date	Unit	Remarks
12-21-81	TH-NJ	MON O.K. NO TIES DIST.
3-27-86	SR-SS	" "
4-1-91	JG-GR	ALL OK
2-28-01	SS	1 NEW TIE
6-8-06	SL	OK
3-17-11	SS	2 NEW TIES

TIE SKETCH

(Show at least four ties)

