

PUBLIC LAND SURVEY MONUMENT RECORD

TYPE OF MONUMENT: HARRISON
 ADAMS COUNTY COORDINATES, NAD 83 (2007)

N. 159286.609

E. 581060.985

ELEVATION- DATUM

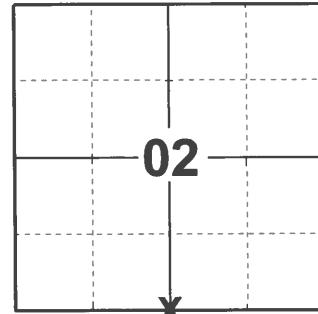
FIELD WORK DATE: 03/01/2021

BASIS FOR MONUMENT LOCATION

1976 - PLS 922 FOUND 4"X4"X10" STONE NOT ON RECORD. BELIEVED THIS STONE WAS SET BY M.C.SMITH OR H.C. AMUNDSON AS IN REVIEWING OLD SURVEY NOTES. THEY BOTH VISITED THIS CORNER ON DIFFERENT OCCASIONS. FITS THEIR DISTANCES ALONG NORTH-SOUTH 1/4 LINE WHEN DISTANCES ARE PRORATED.

2006 - PLS 2357 LOCATED AND TIED TO THIS CORNER WHICH WAS THEN TAKEN OUT DUE TO ROAD CONSTRUCTION. THEN REPLACED CORNER WITH A HARRISON MONUMENT AFTER COMPLETION OF ROAD AND SET NEW TIES AS SHOWN.

2021 - PLS 2675 FOUND A HARRISON MONUMENT 3" BELOW THE ROAD SURFACE, 1 TIE, AND 1 WITNESS. THE MONUMENT AGREES WITH BOTH THE TIE AND WITNESS. ACCEPTED THE HARRISON AS THE CORNER LOCATION. SET 3 NEW TIES AND MEASURED TO THE EXISTING TIE AND WITNESS.



LOCATION

(INDICATE CORNER BY "X")

SEAL:



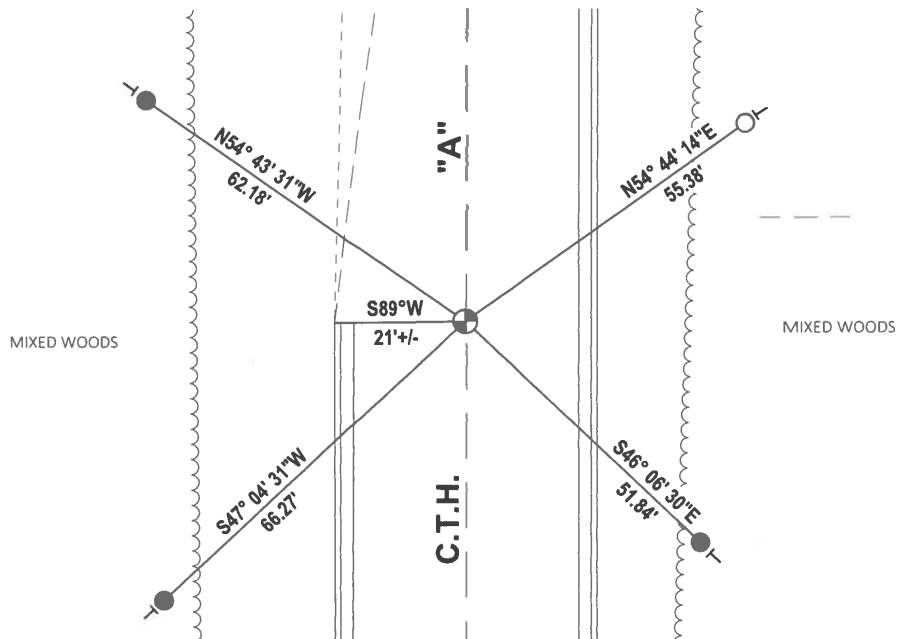
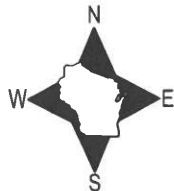
DATA SHOWN HERE ON THIS TIE SHEET IS CORRECT AND COMPLETE TO THE BEST OF MY KNOWLEDGE AND BELIEF.

PROFESSIONAL LAND SURVEYOR

DATE 5/20/21

- TIE SKETCH

NOTE: WITNESS IS OUTSIDE CORNER END OF CURB AND GUTTER.



- SET 3/4" x 18" IRON REBAR, 1.50#/FT
- FOUND 3/4" IRON ROD
- ⊕ FOUND HARRISON MONUMENT
- VINYL "T" POST

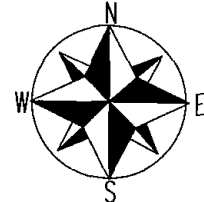
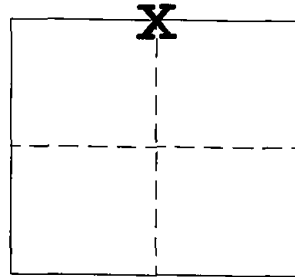
**ADAMS COUNTY
GOVERNMENT LAND CORNER CERTIFICATE**

TYPE OF MONUMENT: STANDARD HARRISON
A.C.C.S COORDINATES N: 159286.52
E: 581061.30

ELEV. M.S.L. DATUM:
THETA ANGLE:
FIELD BOOK: PAGE:
DRAWN BY: KELLY D. CALLAWAY

CORNER NO. 30

SECTION 11
TOWN 15 NORTH
RANGE 7 EAST



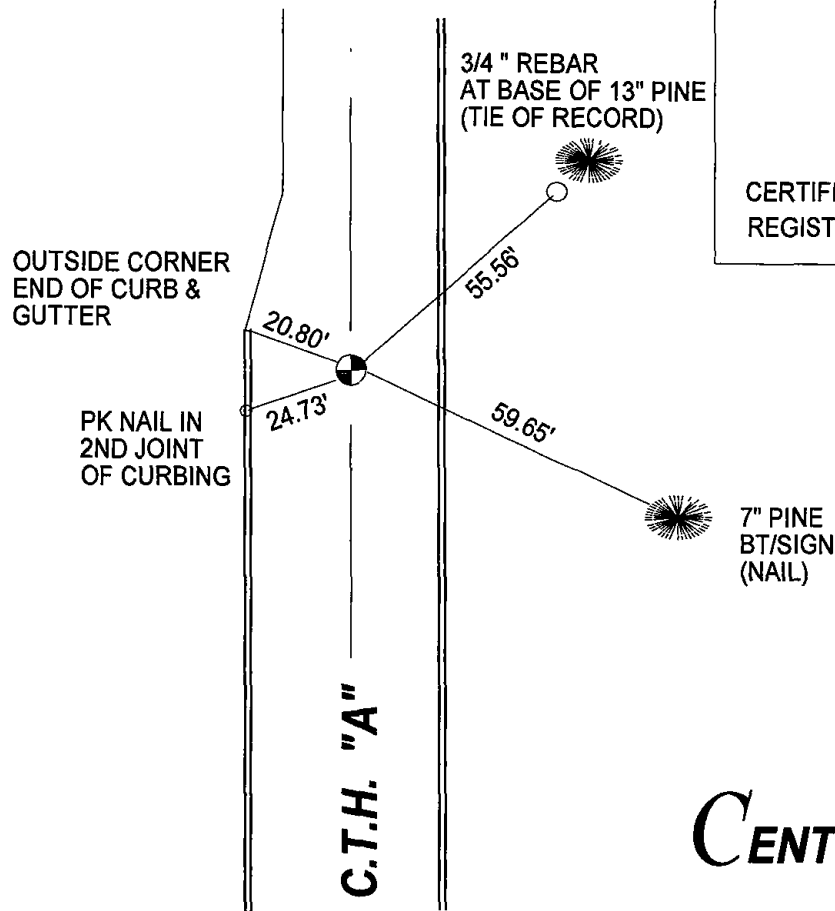
BASIS FOR CORNER LOCATION

FRED ZIETLOW: Found a 4"x4"x10" Stone and replaced it with a harrison in March of 1976

July of 2006 I located and tied to this corner which was then taken out due to road construction. I then replaced corner with a Harrison monument after completion of road and set new ties as shown.

SEAL

CERTIFIED CORRECT
REGISTERED LAND SURVEYOR



CENTRAL STAKING Inc

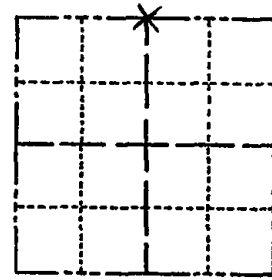
2523 Post Road
Stevens Point, WI 54481
Office: 715-345-6904 Fax: 715-345-7728

ADAMS COUNTY

Survey Monument Record

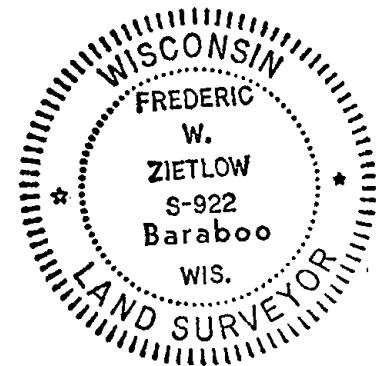
TYPE OF MONUMENT: 30" HARRISON
 STATE PLANE COORDINATES: N _____
 E _____
 ELEVATION — M.S.L. DATUM: _____
 THETA ANGLE: _____
 FIELD BOOK: _____ PAGE _____

CORNER NO. 922
 SECTION 11
 TOWN 15N
 RANGE 7E



LOCATION
(Indicated by 'X')

SEAL:



BASIS FOR MONUMENT LOCATION

(Use reverse side if necessary)

Show info such as: History of corner, with reference to Vol. and pg. dates, surveyor; exact description of monument replaced; if location computed, by taped or EDM traverse; landowner remarks, etc.

FOUND 4"X4"X10" STONE NOT ON RECORD.
 I BELIEVE THIS STONE WAS SET BY
 M.C. SMITH OR H.C. AMUNDSON AS IN
 REVIEWING OLD SURVEY NOTES THEY BOTH
 VISITED THIS CORNER ON DIFFERENT
 OCCASSIONS. FITS THEIR DISTANCES
 ALONG N-S 1/4 LINE WHEN DISTANCES
 ARE PROPORTED.

MAINTENANCE RECORD

Date	Init.	Remarks
9-15-81	NJ-LC	MON. & TIES O.K.
6-15-85	OK	KEN CARLSON
2-17-86	OK	GR-SS
4-1-91	OK	GR-JG
4-19-96	OK	JG-SS

CERTIFIED CORRECT:

Frederic W. Zietlow

Registered Land Surveyor

DATE: MARCH 16, 1976

TIE SKETCH

1-GONE, 1-NEW, MON, OK 3-B-06-JG / ALSO SEE TIE SHEET BY CENTRAL STAKING INC. (JULY OF 2006 ON BACK SIDE)

(Show at least four ties)

