

SECTION 01 TOWN 15 RANGE 07

ADAMS COUNTY

COUNTY CORNER NO: 33
 ROMPORTOL ID: 41507010000

PUBLIC LAND SURVEY MONUMENT RECORD

TYPE OF MONUMENT: HARRISON
 ADAMS COUNTY COORDINATES, NAD 83 (2007)

N. 159333.896

E. 589050.297

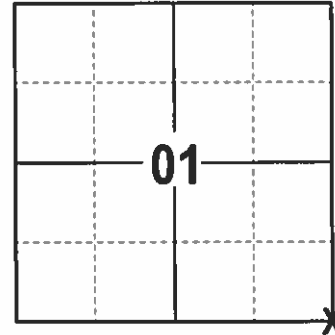
ELEVATION- --- DATUM ---

FIELD WORK DATE: 1/31/2017

BASIS FOR MONUMENT LOCATION

1974- PLS 417 DETERMINED A LOCATION BY COMPUTED COORDINATES FROM AN EXTENSIVE TRAVERSE CONNECTING ALL EXISTING MONUMENTS AND EVIDENCE IN ALL OF SECTIONS 12 AND 13. PROBED AND DUG, REPLACE A 3/4 INCH IRON ROD WITH A HARRISON.

2017 - PLS 2994 FOUND EXISTING HARRISON AT GROUND SURFACE AND 2 EXISTING WITNESSES. THE HARRISON AGREES WITH THE EXISTING WITNESSES. ACCEPTED THE HARRISON AND SET 4 NEW TIES.



LOCATION
(INDICATE CORNER BY "X")

SEAL:

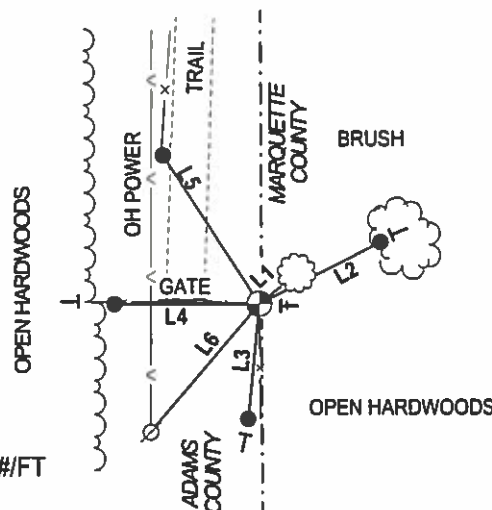
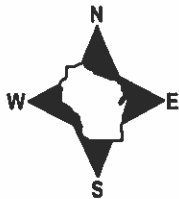


DATA SHOWN HERE ON THIS TIE SHEET IS CORRECT AND COMPLETE TO THE BEST OF MY KNOWLEDGE AND BELIEF.

PROFESSIONAL LAND SURVEYOR

DATE 3/7/17

- TIE SKETCH -



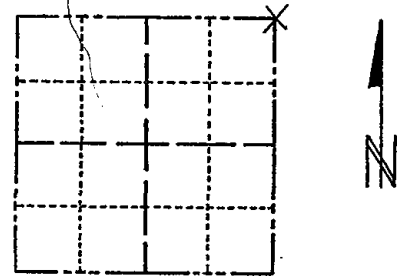
- 3/4" x 18" IRON REBAR SET, 1.50#/FT
- ⊙ FOUND HARRISON
- ⊙ FOUND WITNESS POWER POLE
- VINYL "T" POST
- STEEL "T" POST
- ⊙ FOUND WITNESS TREE

LINE	BEARING	DISTANCE
L1	N 51°29' E	12.5'±
L2	N 63°12'15" E	35.41'
L3	S 05°52'26" W	29.98'
L4	N 89°59'38" W	37.67'
L5	N 32°52'44" W	45.84'
L6	S 40°31' W	44.0'±

CORNER NO. 361
 SECTION 12
 TOWN 15
 RANGE 7

Survey Monument Record

TYPE OF MONUMENT: HARRISON
 STATE PLANE COORDINATES: N _____
 E _____
 ELEVATION — M.S.L. DATUM: _____
 THETA ANGLE: _____
 FIELD BOOK: 28 PAGE 14-17



LOCATION
(Indicated by 'X')

SEAL:

BASIS FOR MONUMENT LOCATION

(Use reverse side if necessary)

Show info such as: History of corner, with reference to Vol. and pg, dates; surveyor; exact description of monument replaced; if location computed, by taped or EDM traverse; landowner remarks, etc.

Location determined by computed coordinates from an extensive traverse connecting all existing monuments and evidence in all of sections 12-13.

Probed and dug.

Replaced 3/4" iron rod with Harrison monument.

Corner & ties OK. trees scrubbed BT 4-1-16 GR-SS
 Enter from North thru Boy Scout camp
 & along power line
 3-28-86 OK GR
 4-1-91 ALL OK GR-JG
 4-93 KC OK 3-11-95 - OK - SS



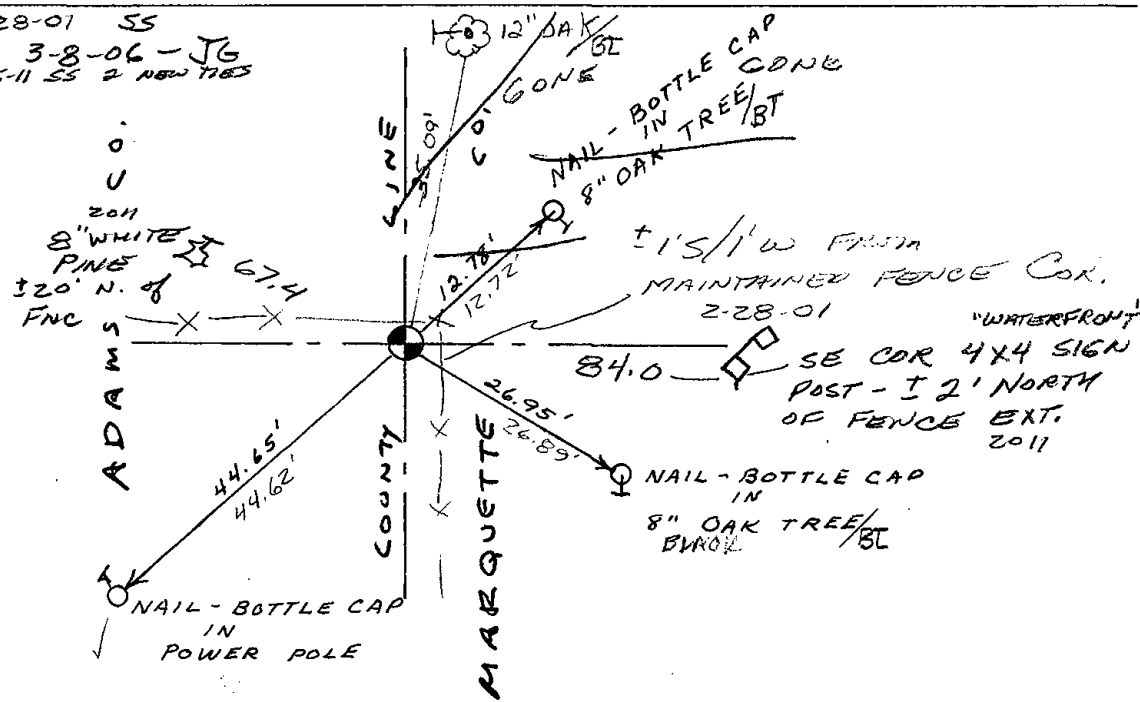
CERTIFIED CORRECT:

R. K. Saylor
 Registered Land Surveyor

DATE: 11/15/74

TIE SKETCH

OK 2-28-01 SS
 OK 3-8-06 - JG
 (Show at least four ties) 3-15-11 SS 2 NEW TIES



Handwritten notes or scribbles, possibly including the number '6'.

MAINTENANCE RECORD

Date	Item	Remarks
9-15-81	LC-NJ	MON. OK.