

PUBLIC LAND SURVEY MONUMENT RECORD

TYPE OF MONUMENT: HARRISON
 ADAMS COUNTY COORDINATES, NAD 83 (2007)

N. 156696.772
 E. 567884.284

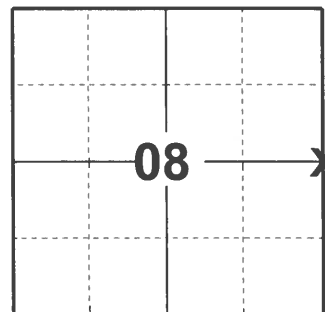
ELEVATION- _____ DATUM _____

FIELD WORK DATE: 03/09/2021

BASIS FOR MONUMENT LOCATION

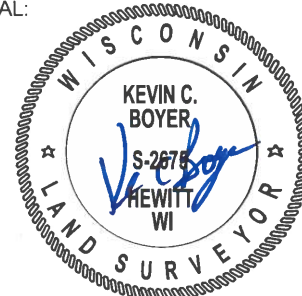
1976 - PLS 1103 RAN EDM/T2 TRAVERSE AROUND SECTION 8 AND ADJOINING SECTIONS TO DETERMINE SEARCH AREAS. FOUND NO EVIDENCE OF ORIGINAL CORNER OR ANY REMONUMENTATION. SET HARRISON MONUMENT PROPORTIONATE TO ORIGINAL NOTES AND ON LINE BETWEEN ADJACENT SECTION CORNERS. SET 4 NEW TIES AND MEASURED.

2021 - PLS 2675 FOUND HARRISON MONUMENT 4" ABOVE GROUND AND NO EVIDENCE OF EXISTING TIES OR WITNESSES. HARRISON MONUMENT WAS FOUND TO BE ONLINE AND EQUIDISTANT WITH ADJACENT SECTION CORNERS. ACCEPTED THE HARRISON MONUMENT AS THE CORNER LOCATION, SET 4 NEW TIES AND MEASURED.



LOCATION
 (INDICATE CORNER BY "X")

SEAL:



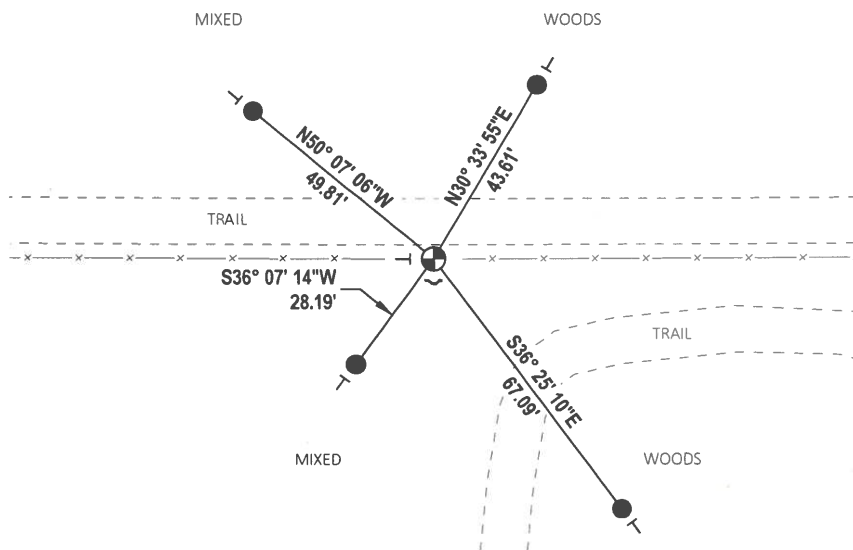
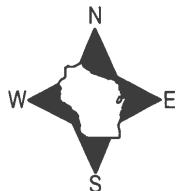
DATA SHOWN HERE ON THIS TIE SHEET IS CORRECT AND COMPLETE TO THE BEST OF MY KNOWLEDGE AND BELIEF.

PROFESSIONAL LAND SURVEYOR

DATE 5/19/21

TIE SKETCH

NOTE: CORNER LANDS 3± SOUTH OF THE OF SOUTHERN TRAIL EDGE.



- SET 3/4" x 18" IRON REBAR, 1.50#/FT
- ⊕ FOUND HARRISON MONUMENT
- ⊖ VINYL "T" POST

ADAMS COUNTY

Survey Monument Record

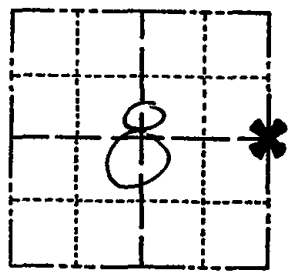
TYPE OF MONUMENT: Harrison
STATE PLANE COORDINATES: N _____
E _____

ELEVATION — M.S.L. DATUM: _____

THETA ANGLE: _____

FIELD BOOK: 37 PAGE 36

CORNER NO. 1049
SECTION 8
TOWN 15
RANGE 7



LOCATION
(Indicated by 'X')

SEAL:



BASIS FOR MONUMENT LOCATION

(Use reverse side if necessary)

Show info such as: History of corner, with reference to Vol. and pg, dates, surveyor; exact description of monument replaced; if location computed, by taped or EDM traverse; landowner remarks, etc.

Ran EDM/T2 traverse around Section 8 and parts of adjoining sections to determine search areas for investigation.

Could find no evidence of the original corner or any remonumentation.

Set corner proportionate to original notes and ~~for~~ line between adjacent section corners.

Set 5-27-76.

CERTIFIED CORRECT:

Dale C. Hagen
Registered Land Surveyor

DATE: 9-21-76

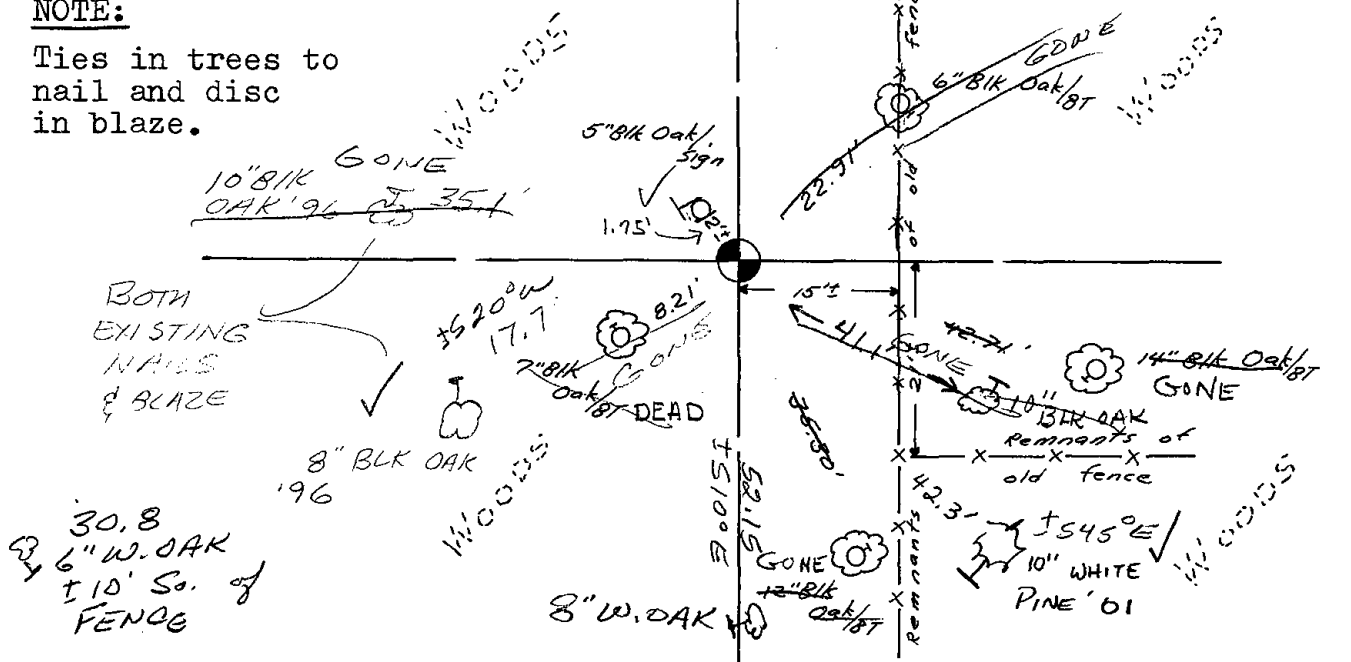
TIE SKETCH

(Show at least four ties)

E-W MAINTAINED FENCE 1' N. OF HARRISON
STEEL POST S. EDGE OF HARRISON

NOTE:

Ties in trees to nail and disc in blaze.



MAINTENANCE RECORD

Date	Init.	Remarks
12-21-81	TH-NJ	MON + TIES o.k.
3-28-06	GX	OK
6-14-91	SG-CR	1-NEW, 2-GONE, MON OK
10-19-01	SS	1-NEW TIE
3-27-06	GPR	OK
7-15-11	SS	2 NEW TIES