

11  
SECTION

15  
TOWN

07  
RANGE

# ADAMS COUNTY

COUNTY CORNER NO: 39

ROMPORTOL ID: 41507112000

## PUBLIC LAND SURVEY MONUMENT RECORD

TYPE OF MONUMENT: HARRISON  
ADAMS COUNTY COORDINATES, NAD 83 (2007)

N. 156684.836

E. 583679.441

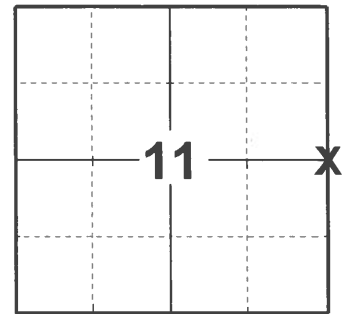
ELEVATION- \_\_\_\_\_ DATUM \_\_\_\_\_

FIELD WORK DATE: 03/04/2021

### BASIS FOR MONUMENT LOCATION

1976 - PLS 922 SET HARRISON MONUMENT ON LINE BETWEEN NORTHEAST CORNER AND SOUTHEAST CORNER OF SECTION 11, ON THE EAST-WEST EXTENSION OF OLD SURVEY MONUMENTATION OF M.C. SMITH, H. AMUNDSON AND R. PHILLIPS TO FIT CONDITIONS.

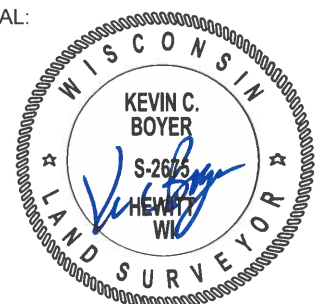
2021 - PLS 2675 FOUND HARRISON MONUMENT FLUSH WITH GROUND AND DID NOT RECOVER ANY TIES OR WITNESSES. FOUND HARRISON MONUMENT TO BE ONLINE AND EQUIDISTANT BETWEEN ADJACENT SECTION CORNERS. ACCEPTED THE HARRISON MONUMENT AS THE CORNER LOCATION, SET 4 NEW TIES AND MEASURED.



**LOCATION**

(INDICATE CORNER BY "X")

SEAL:



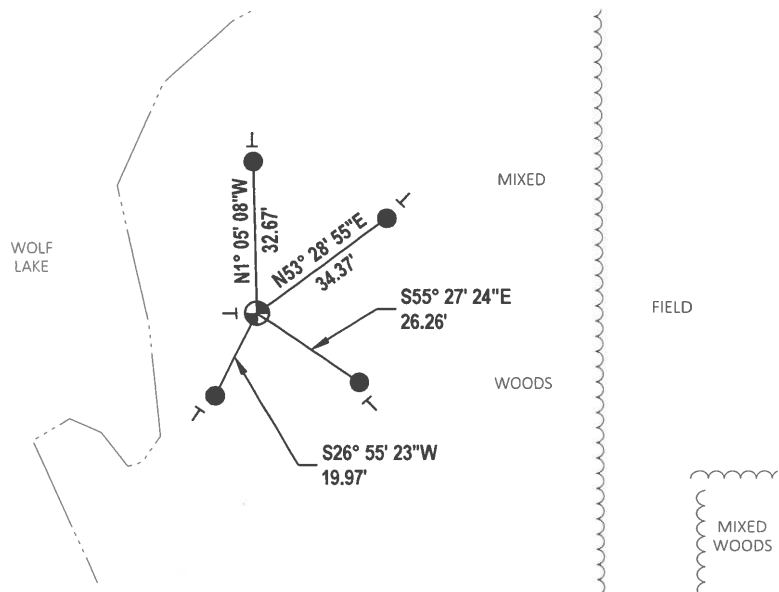
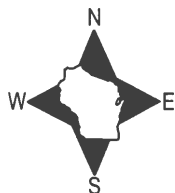
DATA SHOWN HERE ON THIS TIE SHEET IS CORRECT AND COMPLETE TO THE BEST OF MY KNOWLEDGE AND BELIEF.

PROFESSIONAL LAND SURVEYOR

DATE 5/1/21

### - TIE SKETCH

NOTE: CORNER LANDS 72'± WEST OF FIELD AND 23'± EAST OF WOLF LAKE.



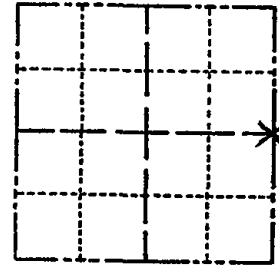
- SET 3/4" x 18" IRON REBAR, 1.50#/FT
- ⊕ FOUND HARRISON MONUMENT
- ⊥ VINYL "T" POST

# ADAMS COUNTY

## Survey Monument Record

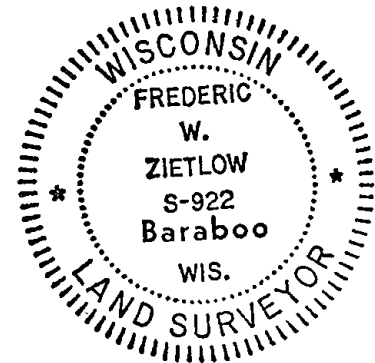
TYPE OF MONUMENT: 30" HARRISON  
 STATE PLANE COORDINATES: N \_\_\_\_\_  
 E \_\_\_\_\_  
 ELEVATION — M.S.L. DATUM: \_\_\_\_\_  
 THETA ANGLE: \_\_\_\_\_  
 FIELD BOOK: \_\_\_\_\_ PAGE \_\_\_\_\_

CORNER NO. 923 (39)  
 SECTION 11  
 TOWN 15N  
 RANGE 7E



LOCATION  
(Indicated by 'X')

SEAL:



### BASIS FOR MONUMENT LOCATION

(Use reverse side if necessary)

Show info such as: History of corner, with reference to Vol. and pg, dates, surveyor; exact description of monument replaced; if location computed, by taped or EDM traverse; landowner remarks, etc.

CHECKED COUNTY RECORDS FOR RESURVEYS  
 & NONE WERE ON FILE FOR THIS CORNER.  
 SET CORNER ON LINE BETWEEN NE COR. &  
 SE COR. OF SEC. 11, ON THE E-W EXTENSION  
 OF OLD SURVEY MONUMENTATION BY M.C. SMITH,  
 H. AMUNDSON & R. PHILIPPS TO FIT CONDITIONS.  
 (EDM. TRAVERSE OF SECTION)

### MAINTENANCE RECORD

Date	Init.	Remarks
9-15-81	LC-NJ	Mon. & Tie o.k.
3-27-86	GR-SS	" " "
4-1-91	GR-JC	ALL OK
4-19-96	JG-SS	OK
2-28-01	JG-SS	OK

CERTIFIED CORRECT:

*Frederic W. Zietlow*

Registered Land Surveyor

DATE: MARCH 16, 1976

### TIE SKETCH

8-7-06 JG, ALL OK

(Show at least four ties)

