

12 SECTION    15 TOWN    07 RANGE

# ADAMS COUNTY

COUNTY CORNER NO: 40  
 ROMPORTOL ID: 41507122000

## PUBLIC LAND SURVEY MONUMENT RECORD

TYPE OF MONUMENT: HARRISON  
 ADAMS COUNTY COORDINATES, NAD 83 (2007)

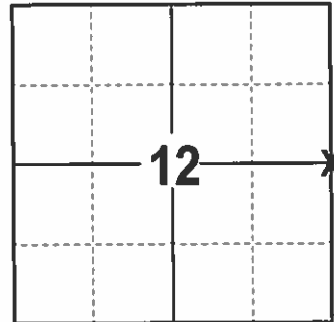
N. 156669.018

E. 589022.460

ELEVATION-      DATUM     

FIELD WORK DATE: 2/1/2017

### BASIS FOR MONUMENT LOCATION



**LOCATION**  
 (INDICATE CORNER BY "X")

1974- PLS 417 SET HARRISON ON A STRAIGHT LINE EQUIDISTANT BETWEEN SECTION CORNERS ON THE BASIS OF COMPUTED COORDINATES. THIS POINT USED EXTENSIVELY IN CERTIFIED SURVEYS IN THE AREA. REPLACED 6 INCH LONG "H" IRON WITH HARRISON.

2017 - PLS 2994 FOUND EXISTING HARRISON AT GROUND SURFACE AND 2 EXISTING WITNESSES. THE HARRISON AGREES WITH THE EXISTING WITNESSES. ACCEPTED THE HARRISON AND SET 4 NEW TIES.

SEAL:

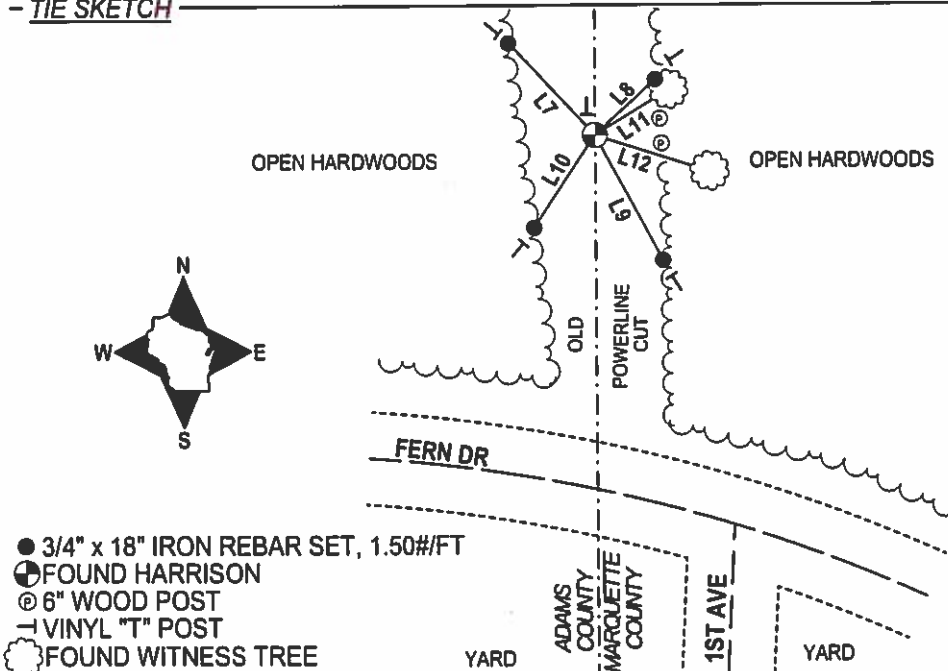


DATA SHOWN HERE ON THIS TIE SHEET IS CORRECT AND COMPLETE TO THE BEST OF MY KNOWLEDGE AND BELIEF.

PROFESSIONAL LAND SURVEYOR

DATE 3/7/17

### - TIE SKETCH



NOTE: THE CORNER FALLS 50'± NORTH OF THE CENTERLINE OF FERN DR.

- 3/4" x 18" IRON REBAR SET, 1.50#/FT
- ⊕ FOUND HARRISON
- ⊙ 6" WOOD POST
- VINYL "T" POST
- ⊙ FOUND WITNESS TREE

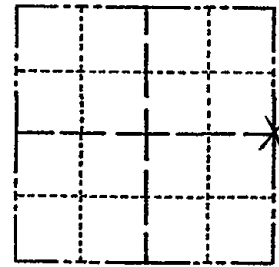
LINE	BEARING	DISTANCE
L7	N 43°07'06" W	32.75'
L8	N 47°36'37" E	21.33'
L9	S 28°25'35" E	37.00'
L10	S 33°41'46" W	28.88'
L11	N 58°41' E	22.5'±
L12	S 72°20' E	31.5'±

# ADAMS COUNTY

## Survey Monument Record

TYPE OF MONUMENT: HARRISON  
 STATE PLANE COORDINATES: N \_\_\_\_\_  
 E \_\_\_\_\_  
 ELEVATION — M.S.L. DATUM: \_\_\_\_\_  
 THETA ANGLE: \_\_\_\_\_  
 FIELD BOOK: 28 PAGE 14-16

CORNER NO. 358 40  
 SECTION 12  
 TOWN 15  
 RANGE 7



LOCATION  
(Indicated by 'X')

SEAL:

### BASIS FOR MONUMENT LOCATION

(Use reverse side if necessary)

Show info such as: History of corner, with reference to Vol. and pg, dates, surveyor; exact description of monument replaced; if location computed, by taped or EDM traverse; landowner remarks, etc.

Set on a straight line equidistant between section corners on the basis of computed coordinates.

This point used extensively in certified surveys in area.

Replaced existing 6" long "H" iron with Harrison monument.

Probed and dug.

Corner & ties O.K. 4-1-76 GR-SS  
 3-16-11 SS OK



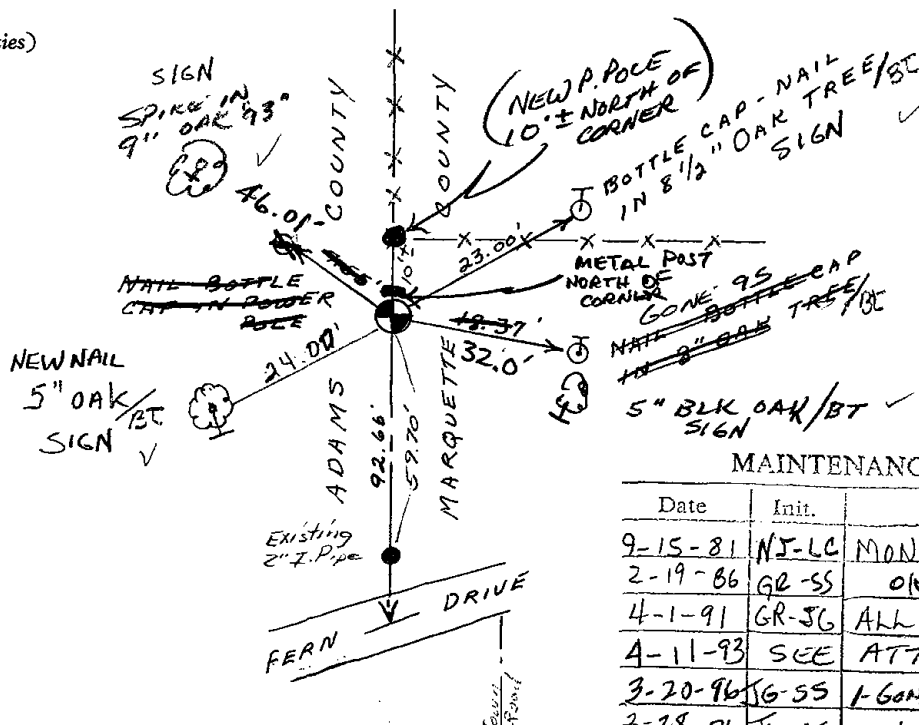
CERTIFIED CORRECT:

R. K. Saylor  
 Registered Land Surveyor

DATE: 1/15/74

### TIE SKETCH

(Show at least four ties)



### MAINTENANCE RECORD

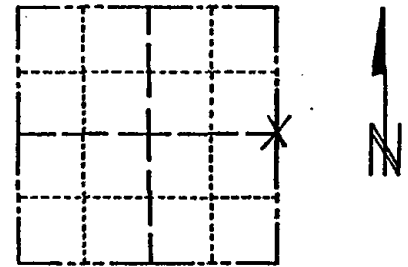
Date	Init.	Remarks
9-15-81	NJ-LC	MONETIES O.K
2-19-86	GR-SS	OK
4-1-91	GR-JG	ALL OK
4-11-93	SEE	ATTACHED SHEET
3-20-96	SG-SS	1-GONE, OK
2-28-01	GR-SS	OK

# ADAMS COUNTY

## Survey Monument Record

TYPE OF MONUMENT: HARRISON  
 STATE PLANE COORDINATES: N \_\_\_\_\_  
 E \_\_\_\_\_  
 ELEVATION — M.S.L. DATUM: \_\_\_\_\_  
 THETA ANGLE: \_\_\_\_\_  
 FIELD BOOK: 28 PAGE 14-16

CORNER NO. 358  
 SECTION 12  
 TOWN 15  
 RANGE 7



LOCATION  
(Indicated by 'X')

### BASIS FOR MONUMENT LOCATION

(Use reverse side if necessary)

Show info such as: History of corner, with reference to Vol. and pg, dates, surveyor; exact description of monument replaced; if location computed, by taped or EDM traverse; landowner remarks, etc.

SEAL:

Set on a straight line equidistant between section corners on the basis of computed coordinates.

This point used extensively in certified surveys in area.

Replaced existing 6" long "H" iron with Harrison monument.

Probed and dug.

*Count 8 for 24 4076 0555*

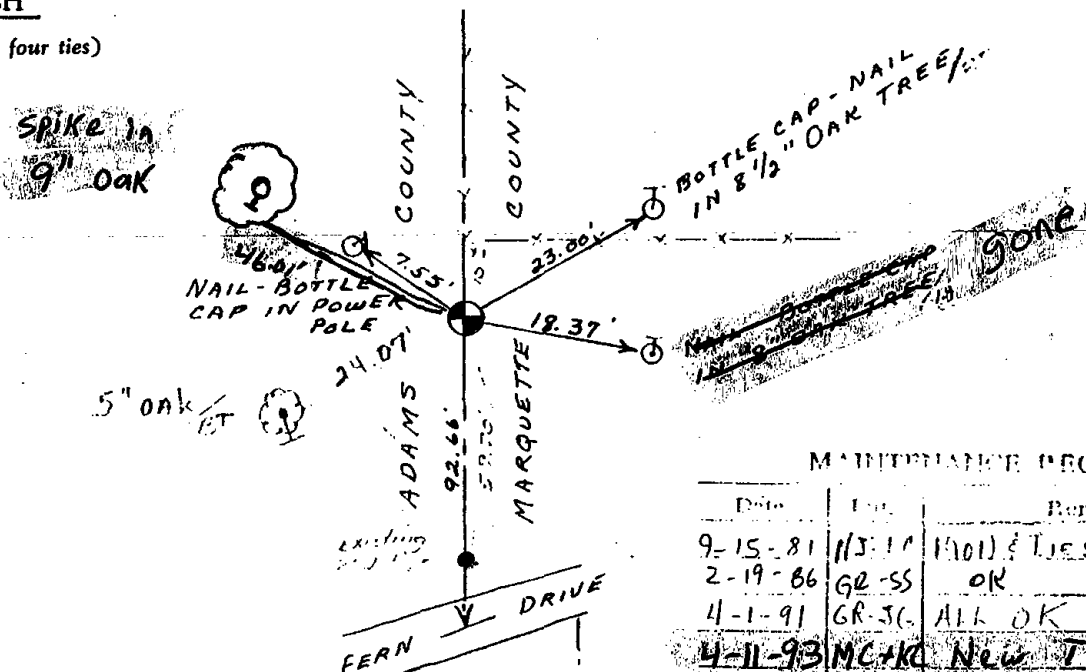


CERTIFIED CORRECT:

R. K. Saylor  
 Registered Land Surveyor  
 DATE: 1/15/74

### TIE SKETCH

(Show at least four ties)



### MAINTENANCE RECORD

Date	By	Remarks
9-15-81	MS-11	(101) TIES O.K.
2-19-86	GR-SS	OK
4-1-91	GR-JC	ALL OK
4-11-93	MCAK	New TIE