

07
SECTION

15
TOWN

07
RANGE

ADAMS COUNTY

COUNTY CORNER NO: 43

ROMPORTOL ID: 41507070000

PUBLIC LAND SURVEY MONUMENT RECORD

TYPE OF MONUMENT: HARRISON
ADAMS COUNTY COORDINATES, NAD 83 (2007)

N. 154065.756

E. 562623.105

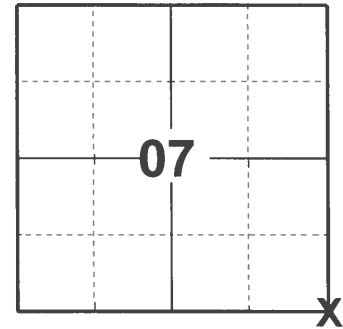
ELEVATION- _____ DATUM _____

FIELD WORK DATE: 03/09/2021

BASIS FOR MONUMENT LOCATION

1974 - PLS 878 EXCAVATED CORNER LOCATION WITH BACKHOE. FOUND RAILROAD SPIKE ALSO USED IN SURVEYS NORTH AND WEST OF CORNER LOCATION. RAILROAD SPIKE FIT POSSESSION LINES WELL. NO RESURVEYS OF RECORD CONCERNING THIS POINT. PLS 878 REPLACED RAILROAD SPIKE WITH HARRISON MONUMENT.

2021 - PLS 2675 FOUND HARRISON MONUMENT 2" BELOW ROAD SURFACE. HARRISON MONUMENT AGREES WITH FOUND TIE AND WITNESS. ACCEPTED THE HARRISON MONUMENT AS THE CORNER LOCATION. SET 3 NEW TIES AND MEASURED TO THE EXISTING TIE AND WITNESS.



LOCATION

(INDICATE CORNER BY "X")

SEAL:



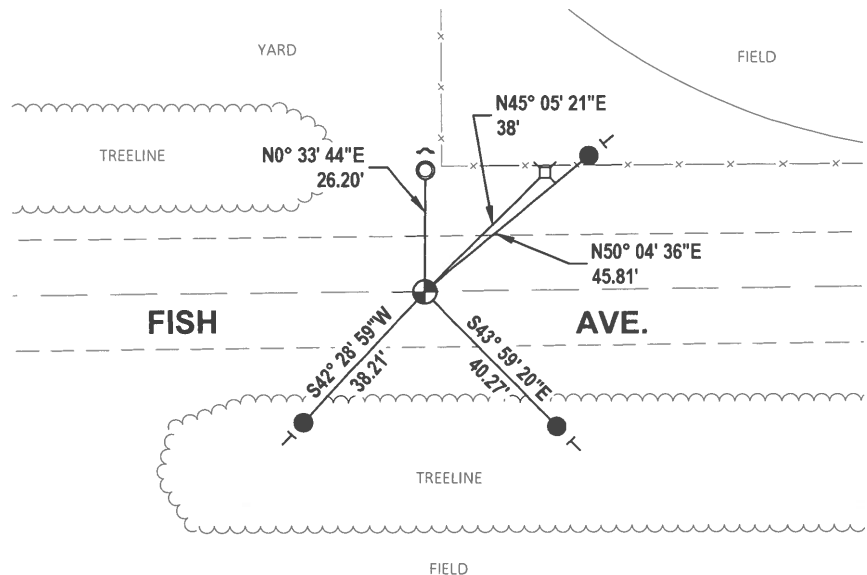
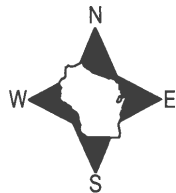
DATA SHOWN HERE ON THIS TIE SHEET IS CORRECT AND COMPLETE TO THE BEST OF MY KNOWLEDGE AND BELIEF.

PROFESSIONAL LAND SURVEYOR

DATE 5/19/21

- TIE SKETCH

NOTE: CORNER LANDS ON THE CENTERLINE OF FISH AVE.



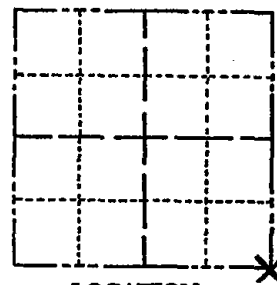
- SET 3/4" x 18" IRON REBAR, 1.50#/FT
- FOUND 1-1/4" O.D. IRON PIPE
- ⊕ FOUND HARRISON MONUMENT
- ↘ STEEL FENCE POST
- ⊖ VINYL "T" POST

ADAMS COUNTY

Survey Monument Record

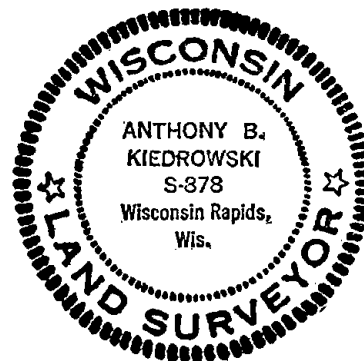
TYPE OF MONUMENT: HARRISON
 STATE PLANE COORDINATES: N _____
 E _____
 ELEVATION — M.S.L. DATUM: _____
 THETA ANGLE: _____
 FIELD BOOK: _____ PAGE _____

CORNER NO. 650⁷³
 SECTION 7
 TOWN 15
 RANGE 7



LOCATION
(Indicated by 'X')

SEAL:



BASIS FOR MONUMENT LOCATION

(Use reverse side if necessary)

Show info such as: History of corner, with reference to Vol. and pg, dates, surveyor; exact description of monument replaced; if location computed, by taped or EDM traverse; landowner remarks, etc.

Excavated with backhoe. Found railroad spike and nothing else. Spike fit possession lines and was apparently used in surveys north and west of here. Replaced spike with Harrison monument.

No resurveys of record for this point.

CORNER O.K. 10-28-76 RP-SS
 MAINTENANCE RECORD

Date	Init.	Remarks
12-30-81	TH-NJ	Mon. O.K.
2-3-86	GR	OK
3-26-91	JG	ALL OK
11-21-95	SS	3 NEW TIES
2-16-01	JG	OK
6-8-06	JG	OK
2-18-11	SS	"

CERTIFIED CORRECT:

Anthony B. Kiedrowski
 Registered Land Surveyor

DATE: Oct., '74

TIE SKETCH

(Show at least four ties)

Ties are to nail and disc.

