

08
SECTION

15
TOWN

07
RANGE

ADAMS COUNTY

COUNTY CORNER NO: 45

ROMPORTOL ID: 41507080000

PUBLIC LAND SURVEY MONUMENT RECORD

TYPE OF MONUMENT: 3/4" IRON ROD
ADAMS COUNTY COORDINATES, NAD 83 (2007)

N. 154081.793

E. 567856.173

ELEVATION- - - - - DATUM - - - - -

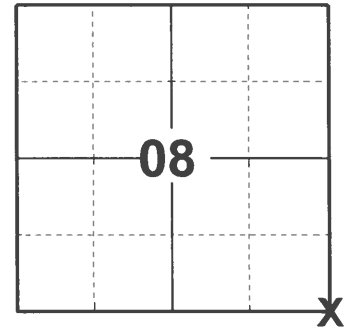
FIELD WORK DATE: 03/09/2021

BASIS FOR MONUMENT LOCATION

1976 - PLS 878 EXCAVATED CORNER LOCATION WITH BACKHOE. FOUND 4" X 5" X 9" SQUARED OFF UPRIGHT RED GRANITE STONE. LOWERED RED GRANITE STONE AND SET HARRISON ON TOP. NO RECORD OF THE RED GRANITE STONE. ACCEPTED AS CORNER AFTER EDM TRAVERSE OF SECTION 8.

1986 - PLS (UNKNOWN) FOUND HARRISON MONUMENT AND REMOVED FOR ROADWORK. SET 3/4" IRON ROD AT CORNER LOCATION.

2021 - PLS 2675 FOUND 3/4" IRON ROD 3" BELOW ROAD SURFACE AND 2 TIES. MONUMENT AGREES WITH WITH EXISTING TIES. ACCEPTED THE 3/4" IRON ROD AS CORNER LOCATION. SET 2 NEW TIES AND MEASURED TO THE EXISTING TIES.



LOCATION

(INDICATE CORNER BY "X")

SEAL:



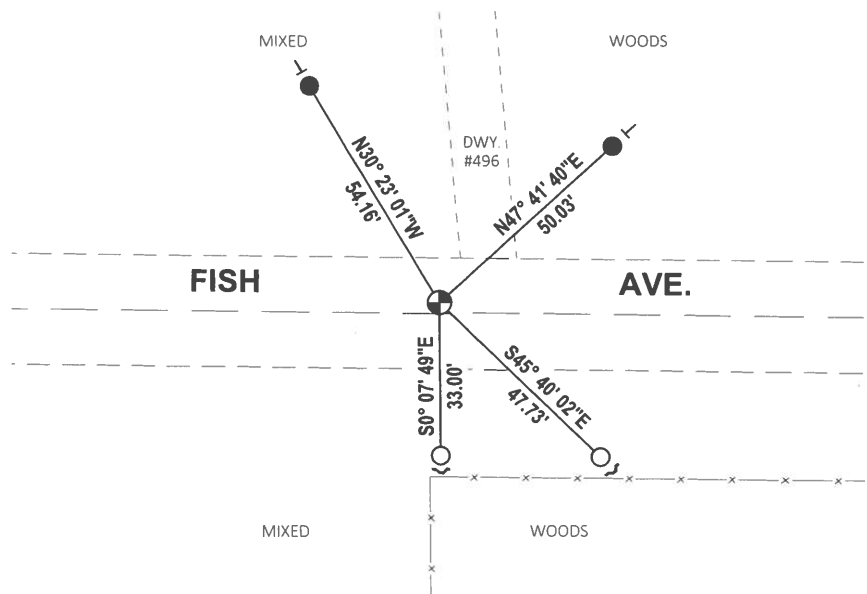
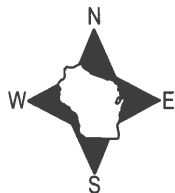
DATA SHOWN HERE ON THIS TIE SHEET IS CORRECT AND COMPLETE TO THE BEST OF MY KNOWLEDGE AND BELIEF.

PROFESSIONAL LAND SURVEYOR

DATE 5/11/21

- TIE SKETCH

NOTE: CORNER LANDS 2.5'± NORTH OF THE CENTERLINE OF FISH AVE.



- SET 3/4" x 18" IRON REBAR, 1.50#/FT
- FOUND 3/4" IRON ROD
- ⊕ FOUND 3/4" IRON ROD
- ↙ STEEL FENCE POST
- ┌ VINYL "T" POST

Government Land Corner Certificate

ADAMS

County

TYPE OF MONUMENT: HARRISON 3/4" ROD

STATE PLANE COORDINATES: N _____
E _____

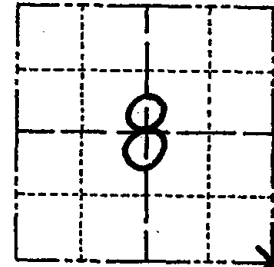
ELEVATION — M.S.L. DATUM: _____

THETA ANGLE: _____

FIELD BOOK: 76 PAGE 12

DRAWN BY: B. SULLIVAN

CORNER NO. 45
SECTION 8
TOWN 15
RANGE 7



LOCATION
(Indicated by 'X')

BASIS FOR MONUMENT LOCATION

Show info such as: History of corner, with reference to Vol. and pg., dates, surveyor; exact description of monument replaced; if location computed, by taped or EDM traverse; landowner remarks, etc. (Use reverse side if necessary)

Retired from Harrison

SEAL: _____

DATA SHOWN HERE ON
CERTIFIED CORRECT:

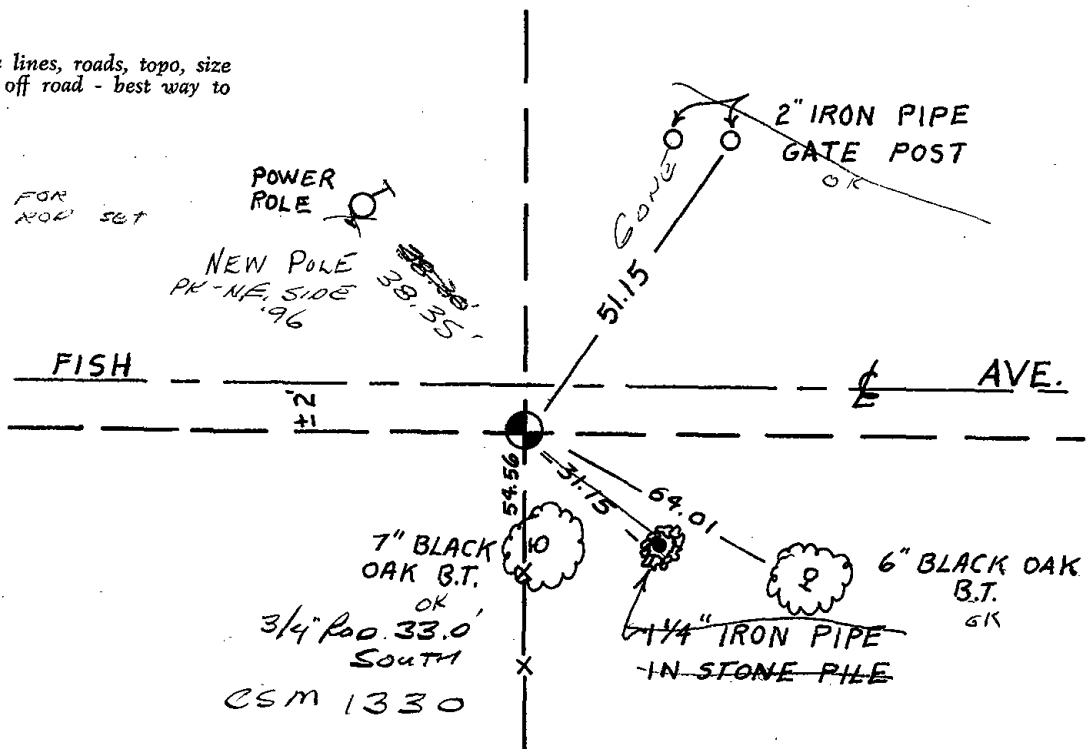
Registered Land Surveyor

DATE: _____

TIE SKETCH

Show at least four ties, also fence lines, roads, topo, size and type of witness trees and if off road - best way to arrive at corner.

HARRISON REMOVED FOR
ROADWORK - 3/4" IRON ROD SET
AT CORNER



7" BLACK OAK B.T. OK
3/4" Rod 33.0' SOUTH
CSM 1330

6" BLACK OAK B.T. OK

ADAMS COUNTY

Survey Monument Record

TYPE OF MONUMENT: Harrison standard

STATE PLANE COORDINATES: N _____

E _____

ELEVATION — M.S.L. DATUM: _____

THETA ANGLE: _____

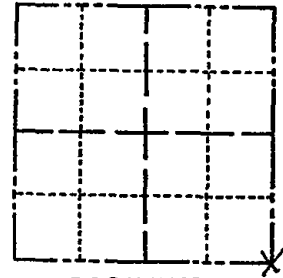
FIELD BOOK: 41 PAGE 16

CORNER NO. 1050

SECTION 8

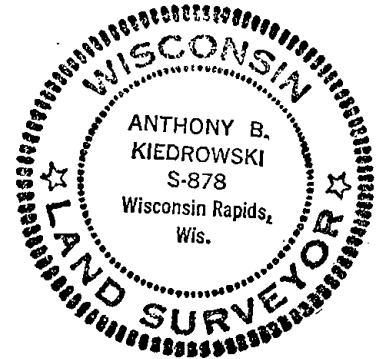
TOWN 15

RANGE 7



LOCATION
(Indicated by 'X')

SEAL:



BASIS FOR MONUMENT LOCATION

(Use reverse side if necessary)

Show info such as: History of corner, with reference to Vol. and pg, dates, surveyor; exact description of monument replaced; if location computed, by taped or EDM traverse; landowner remarks, etc.

Excavated with backhoe, found 4"x5"x9" squared off upright granite (red) stone. Lowered stone and set Harrison on top. No record of stone. Accepted as corner after an EDM traverse of the section.

CERTIFIED CORRECT:

Anthony B. Kiedrowski
Registered Land Surveyor

DATE: 5/18/76

TIE SKETCH

(Show at least four ties)

