

10  
SECTION

15  
TOWN

07  
RANGE

# ADAMS COUNTY

COUNTY CORNER NO: 48

ROMPORTOL ID: 41507100020

## PUBLIC LAND SURVEY MONUMENT RECORD

TYPE OF MONUMENT: CALCULATED POSITION  
ADAMS COUNTY COORDINATES, NAD 83 (2007)

N. 154037.691

E. 575733.915

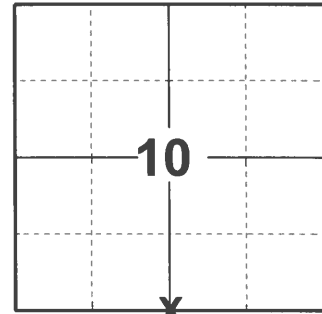
ELEVATION- \_\_\_\_\_ DATUM \_\_\_\_\_

FIELD WORK DATE: 03/08/2021

### BASIS FOR MONUMENT LOCATION

1977 - PLS 1274 RAN EDM TRAVERSE OF SECTION 10 AND THE EAST 1/2 OF SECTION 9. FOUND NO EXISTING EVIDENCE OF CORNER. DID SINGLE PROPORTIONATE MEASURE FROM THE SOUTHWEST AND SOUTHWEST CORNERS OF SECTION 10 TO ESTABLISH CORNER LOCATION. CORNER LOCATION LANDS IN PEPPERMILL LAKE. SET MEANDER CORNER 100' NORTH ALONG THE NORTH-SOUTH 1/4 LINE.

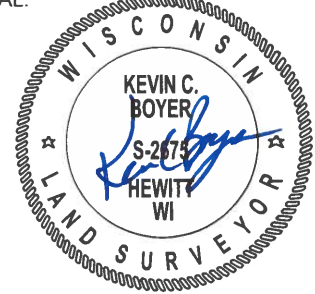
2021 - PLS 2675 FOUND HARRISON (BROKEN TOP) MEANDER CORNER FLUSH WITH GROUND AND 2 TIES. MONUMENT AGREES WITH BOTH TIES. ACCEPTED THE HARRISON (BROKEN TOP) MEANDER CORNER. CALCULATED THE SOUTH 1/4 POSITION BY HOLDING A STRAIGHT LINE BETWEEN THE MEANDER CORNER AND THE NORTH 1/4 OF SECTION 10 AND GOING SOUTH 100'. THIS LOCATION PLACES THE SOUTH 1/4 CORNER ON A NEAR STRAIGHT LINE AND EQUIDISTANT SPLIT BETWEEN THE SOUTHWEST AND SOUTHWEST CORNERS OF SECTION 10. SET 2 NEW TIES TO MEANDER CORNER AND MEASURED TO THE EXISTING TIES.



LOCATION

(INDICATE CORNER BY "X")

SEAL:



DATA SHOWN HERE ON THIS TIE SHEET IS CORRECT AND COMPLETE TO THE BEST OF MY KNOWLEDGE AND BELIEF.

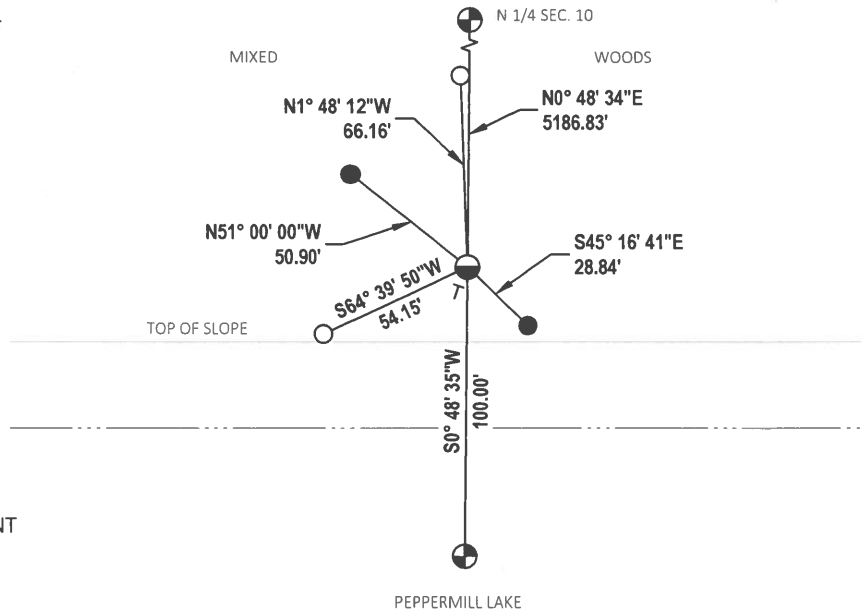
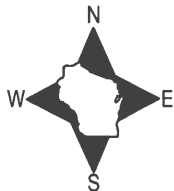
PROFESSIONAL LAND SURVEYOR

DATE 5/19/21

### TIE SKETCH

NOTE1: ACTUAL CORNER LANDS IN PEPPERMILL LAKE.

NOTE2: 3/4" REBAR LOCATED 1.9' WEST OF MEANDER CORNER.



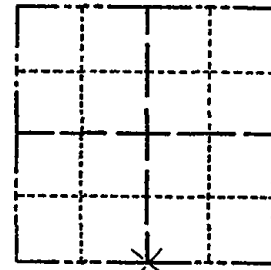
- SET 3/4" x 18" IRON REBAR, 1.50#/FT
- FOUND 3/4" IRON ROD
- ⊕ CALCULATED POSITION OF CORNER
- ⊙ FOUND HARRISON (BROKEN-TOP) MONUMENT MEANDER CORNER
- VINYL "T" POST

# ADAMS COUNTY

CORNER NO. 48  
 SECTION 10  
 TOWN 15 N.  
 RANGE 7 E.

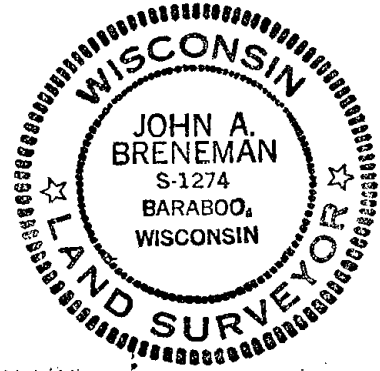
## Survey Monument Record

TYPE OF MONUMENT: 30" SLIMLINE HARRISON MEANDER CORNER  
 STATE PLANE COORDINATES: N. \_\_\_\_\_  
 E. \_\_\_\_\_  
 ELEVATION — M.S.L. DATUM: \_\_\_\_\_  
 THETA ANGLE: \_\_\_\_\_  
 FIELD BOOK: \_\_\_\_\_ PAGE \_\_\_\_\_



LOCATION  
(Indicated by 'X')

SEAL:



### BASIS FOR MONUMENT LOCATION

(Use reverse side if necessary)

Show info such as: History of corner, with reference to Vol. and pg. dates, surveyor; exact description of monument replaced; if location computed, by taped or EDM traverse; landowner remarks, etc.

Checked County Survey Records - No record of any retirement notes. Ran extensive E.O.M. traverse of section 10 and the east 1/2 section 9. Actual location of this corner falls 35' ± into Peppermill Lake. There is no available physical evidence of the position of this corner. I single proportioned this corner in from the established southeast and southwest corners of section 10. I then placed a meander corner at 100.00' feet N. 00°-37'-22" W. from the actual location of this corner on the north-south one-quarter line.

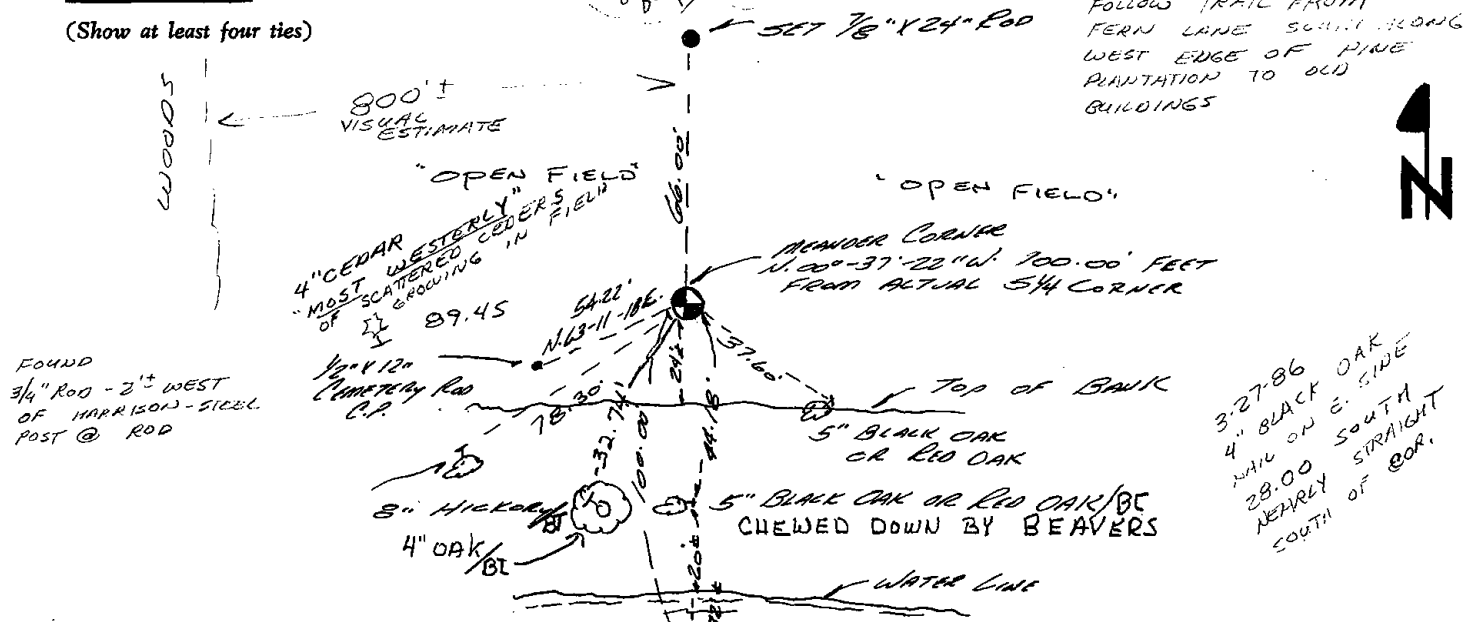
CERTIFIED CORRECT:

*John A. Breneman*  
Registered Land Surveyor

DATE: July 19, 1977

### TIE SKETCH

(Show at least four ties)



NOTE: ALL TIES TO TREES ARE TO P.K. NAILS & SHIMMERS

MAINTENANCE RECORD

Date	I.D.	Remarks
12-30-81	TH-NJ	MON. TOP BROKEN - TIES O.K
3-27-86	SS	" " "   new TIE
5-9-91	JG-SS	" " TIES OK
4-3-96	JG-SS	" " " "
8-7-06	JG	ALL OK