

11
SECTION

15
TOWN

07
RANGE

ADAMS COUNTY

COUNTY CORNER NO: 50

ROMPORTOL ID: 41507110020

PUBLIC LAND SURVEY MONUMENT RECORD

TYPE OF MONUMENT: HARRISON
ADAMS COUNTY COORDINATES, NAD 83 (2007)

N. 154032.380

E. 581016.250

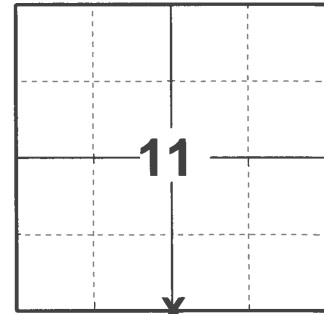
ELEVATION- DATUM

FIELD WORK DATE: 03/04/2021

BASIS FOR MONUMENT LOCATION

1976 - PLS 922 FOUND A 10"X10"X16" HARD HEAD STONE BELIEVED TO BE PLACED BY M.C. SMITH OR H. AMUNDSON IN THE 1920'S. MONUMENT FITS THEIR DISTANCES ALONG THE NORTH-SOUTH 1/4 LINE WHEN PRORATED TO EDM TRAVERSE.

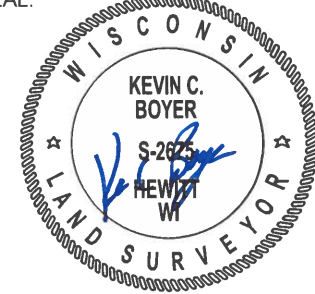
2021 - PLS 2675 FOUND HARRISON MONUMENT 6" BELOW GROUND SURFACE, 2 TIES AND 1 WITNESS. MONUMENT AGREES WITH TIES AND WITNESS. ACCEPTED THE HARRISON MONUMENT AS CORNER LOCATION. SET 2 NEW TIES AND MEASURED TO THE EXISTING TIES AND WITNESS.



LOCATION

(INDICATE CORNER BY "X")

SEAL:



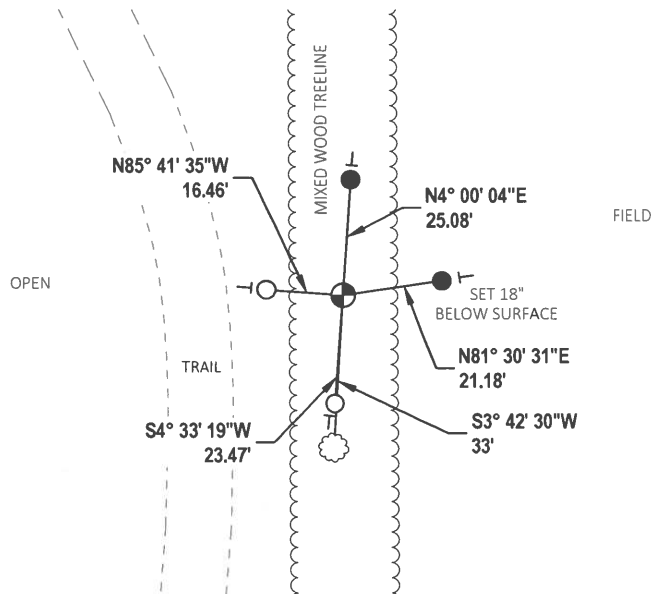
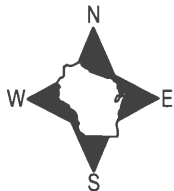
DATA SHOWN HERE ON THIS TIE SHEET IS CORRECT AND COMPLETE TO THE BEST OF MY KNOWLEDGE AND BELIEF.

PROFESSIONAL LAND SURVEYOR

DATE 5/17/21

TIE SKETCH

NOTE: CORNER LANDS 32'± EAST OF THE CENTERLINE OF THE TRAIL.



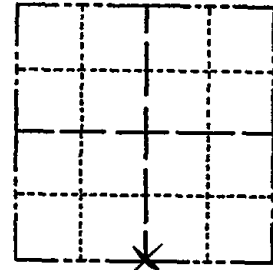
- SET 3/4" x 18" IRON REBAR, 1.50#/FT
- FOUND 3/4" IRON ROD
- ⊕ FOUND HARRISON MONUMENT
- ┊ VINYL "T" POST
- ☼ WITNESS TREE

ADAMS COUNTY

Survey Monument Record

TYPE OF MONUMENT: 30" HARRISON
 STATE PLANE COORDINATES: N _____
 E _____
 ELEVATION — M.S.L. DATUM: _____
 THETA ANGLE: _____
 FIELD BOOK: _____ PAGE _____

CORNER NO. 924
 SECTION 11
 TOWN 15N
 RANGE 7E



LOCATION
 (Indicated by 'X')

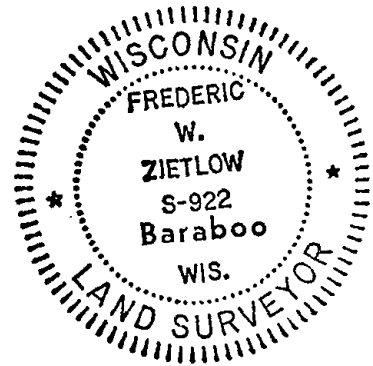
SEAL:

BASIS FOR MONUMENT LOCATION

(Use reverse side if necessary)

Show info such as: History of corner, with reference to Vol. and pg, dates, surveyor; exact description of monument replaced; if location computed, by taped or EDM traverse; landowner remarks, etc.

CHECKED COUNTY RECORDS FOR RESURVEYS ON FILE & NO MENTION WAS MADE OF A MONUMENT OR WITNESS OBJECTS. FOUND A 10"X10"X16" HARD HEAD STONE WHICH I BELIEVE WAS SET BY EITHER MC. SMITH OR H. AMUNDSON AS THEY BOTH VISITED THIS CORNER IN THE 1920'S. FITS THEIR DISTANCES ALONG THE NORTH-SOUTH Y LINE WHEN PRORATED TO OUR E.D.M. TRAVERSE OF SECTION 11.



CERTIFIED CORRECT:

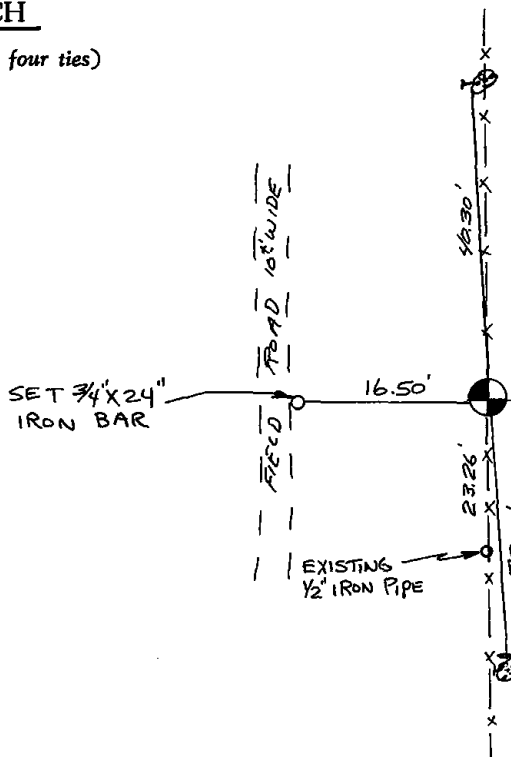
Frederic W. Zietlow

Registered Land Surveyor

DATE: MARCH 16, 1976

TIE SKETCH

(Show at least four ties)



P.K. NAIL & SHINER IN 10" WHITE PINE

CORNER IS 320' ± NORTH OF E. C.T.M. "EE"

DND SIGN

NAIL & SHINER IN 8" WHITE PINE

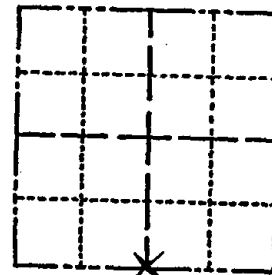
MAINTENANCE RECORD

Date	Init.	Remarks
12-30-81	TH-NJ	MON. LIES OK
3-27-86	GR-SS	" " "
2-21-01	MA-SB	ALL OK
3-17-11	SS	OK

CORNER NO. 924
 SECTION 11
 TOWN 15N
 RANGE 7E

Survey Monument Record

TYPE OF MONUMENT: 30" HARRISON
 STATE PLANE COORDINATES: N _____
 E _____
 ELEVATION — M.S.L. DATUM: _____
 THETA ANGLE: _____
 FIELD BOOK: _____ PAGE _____



LOCATION
(Indicated by 'X')

SEAL:



BASIS FOR MONUMENT LOCATION

(Use reverse side if necessary)

Show info such as: History of corner, with reference to Vol. and pg. dates, surveyor; exact description of monument replaced; if location computed, by taped or EDM traverse; landowner remarks, etc.

CHECKED COUNTY RECORDS FOR RESURVEYS ON FILE & NO MENTION WAS MADE OF A MONUMENT OR WITNESS OBJECTS. FOUND A 10" X 10" X 16" HARD HEAD STONE WHICH I BELIEVE WAS SET BY EITHER MC. SMITH OR H. AMUNDSON AS THEY BOTH VISITED THIS CORNER IN THE 1920'S. FITS THEIR DISTANCES ALONG THE NORTH-SOUTH 1/4 LINE WHEN PROPORTED TO OUR E.D.M. TRAVERSE OF SECTION 11.

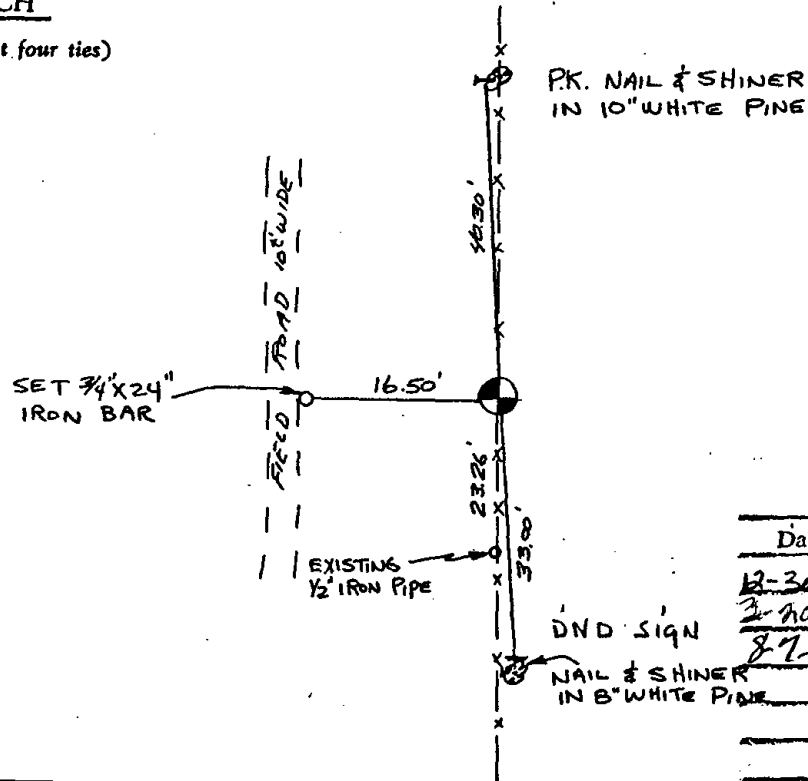
CERTIFIED CORRECT:

Frederic W. Zietlow
 Registered Land Surveyor

DATE: MARCH 16, 1976

TIE SKETCH

(Show at least four ties)



Ties OK Oct 19 '87
 Ken Carlson

Ties OK 12-9-87
 M. Carlson



MAINTENANCE RECORD

Date	Init.	Remarks
12-30-81	TH-NJ	MON. TIES OK
3-20-96	JG SS	OK
87-06	JG	OK

ADAMS COUNTY

Survey Monument Record

TYPE OF MONUMENT: 30" HARRISON

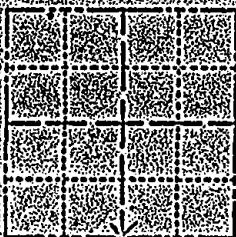
STATE PLANE COORDINATES: N

ELEVATION — M.S.L. DATUM: _____

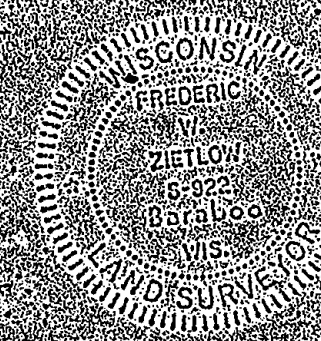
THETA ANGLE: _____

FIELD BOOK: _____ PAGE: _____

CORNER NO. 924
 SECTION 11
 TOWN 15N
 RANGE 7E



LOCATION
 (Indicated by 'X')



CERTIFIED CORRECT
Frederic W. Zietlow
 Registered Land Surveyor
 DATE: MARCH 16 1976

BASIS FOR MONUMENT LOCATION

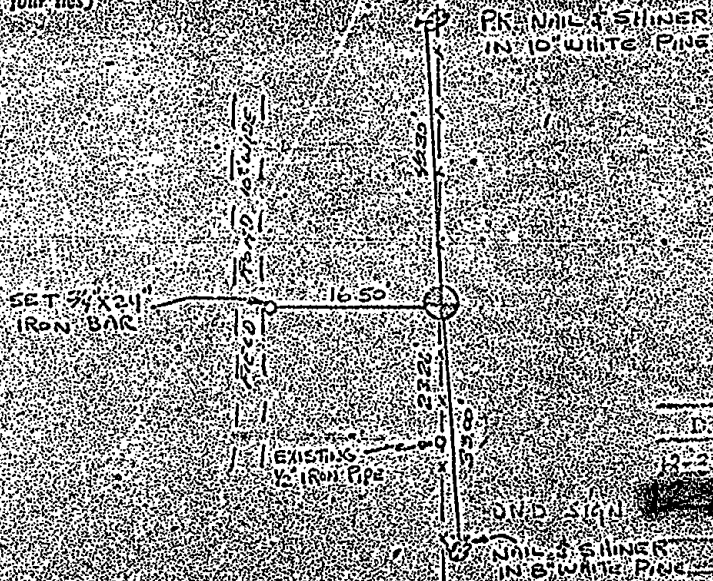
(Use reverse side if necessary)

Show info such as: History of corner, with reference to Vol. and pg. dates, surveyor; exact description of monument replaced; if location computed, by taped or EDM traverse; landowner remarks, etc.

CHECKED COUNTY RECORDS FOR RESURVEYS ON FILE. NO MENTION WAS MADE OF A MONUMENT OR WITNESS OBJECTS FOUND. A 10" X 10" X 16" HARD HEAD STONE WHICH I BELIEVE WAS SET BY EITHER MC SMITH OR H. AMUNDSON AS THEY BOTH VISITED THIS CORNER IN THE 1920'S. FITS THEIR DISTANCES ALONG THE NORTH-SOUTH W. LINE WHEN PROMPTED TO CURVE D.M. TRAVERSE OF SECTION 11.

TIE SKETCH

(Show at least four ties)



MAINTENANCE RECORD

Date	Time	Remarks
12-26-75	11:00 AM	Checked monument