

18
SECTION

15
TOWN

07
RANGE

ADAMS COUNTY

COUNTY CORNER NO: 55

ROMPORTOL ID: 41507182000

PUBLIC LAND SURVEY MONUMENT RECORD

TYPE OF MONUMENT: HARRISON
ADAMS COUNTY COORDINATES, NAD 83 (2007)

N. 151422.852

E. 562616.062

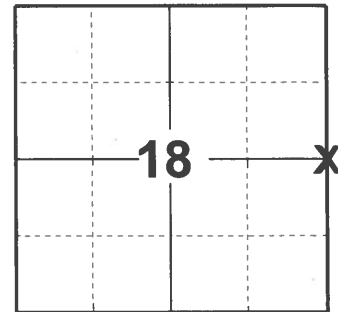
ELEVATION- DATUM

FIELD WORK DATE: 04/01/2021

BASIS FOR MONUMENT LOCATION

1976 - PLS 1103 RAN EDM/T2 TRAVERSE AROUND SECTIONS 18 AND 19 TO DETERMINE SEARCH AREAS. FOUND STANDING BEARING TREE AS PER RAYMOND PHILLIPS NOTES ON MAY 8, 1939 (VOLUME 2, PAGE 135 OF ADAMS COUNTY SURVEY RECORD) AND REMAINS OF POST AT PRESCRIBED DISTANCE AND DIRECTION. REMONUMENTED POST WITH HARRISON MONUMENT.

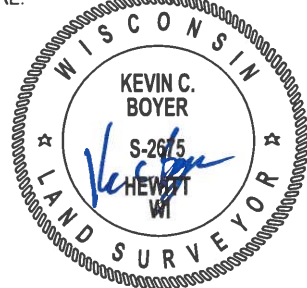
2021 - PLS 2675 FOUND HARRISON MONUMENT 4' UNDER A DIRT PILE. DID NOT RECOVER ANY EXISTING TIES OR WITNESSES. ACCEPTED HARRISON MONUMENT AS THE CORNER LOCATION AND SET 4 NEW TIES.



LOCATION

(INDICATE CORNER BY "X")

SEAL:



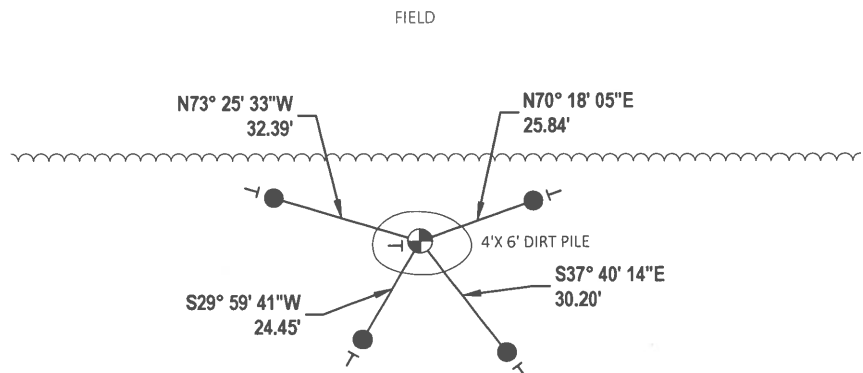
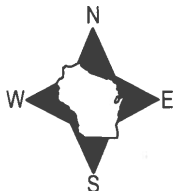
DATA SHOWN HERE ON THIS TIE SHEET IS CORRECT AND COMPLETE TO THE BEST OF MY KNOWLEDGE AND BELIEF.

PROFESSIONAL LAND SURVEYOR

DATE 5/19/21

- TIE SKETCH

NOTE: MONUMENT IS 4' BENEATH DIRT PILE.



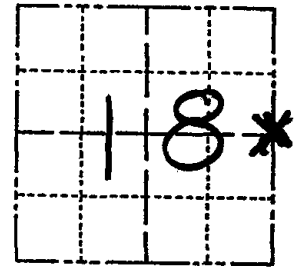
- SET 3/4" x 18" IRON REBAR, 1.50#/FT
- ⊕ FOUND HARRISON MONUMENT
- | VINYL "T" POST

ADAMS COUNTY

Survey Monument Record

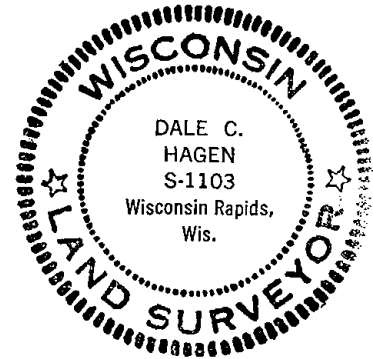
TYPE OF MONUMENT: Harrison
STATE PLANE COORDINATES: N
E
ELEVATION - M.S.L. DATUM:
THETA ANGLE:
FIELD BOOK: PAGE

CORNER NO. 1052
SECTION 18
TOWN 15
RANGE 7



LOCATION (Indicated by 'X')

SEAL:



BASIS FOR MONUMENT LOCATION

(Use reverse side if necessary)

Show info such as: History of corner, with reference to Vol. and pg, dates, surveyor; exact description of monument replaced; if location computed, by taped or EDM traverse; landowner remarks, etc.

Ran EDM/T-2 traverse around Sections 18 and 19 to determine search areas for investigation.

Found standing bearing tree as per notes of Raymond Phillips on May 8, 1939 (Vol 2 Page 135 of Adams County Survey Records) at (S 87° W 10" Black Oak 63 3/4 links) and remains of post at prescribed distance and direction.

Remonumented Post with Harrison Monument, on May 27, 1976.

CERTIFIED CORRECT:

Dale C. Hagen
Registered Land Surveyor

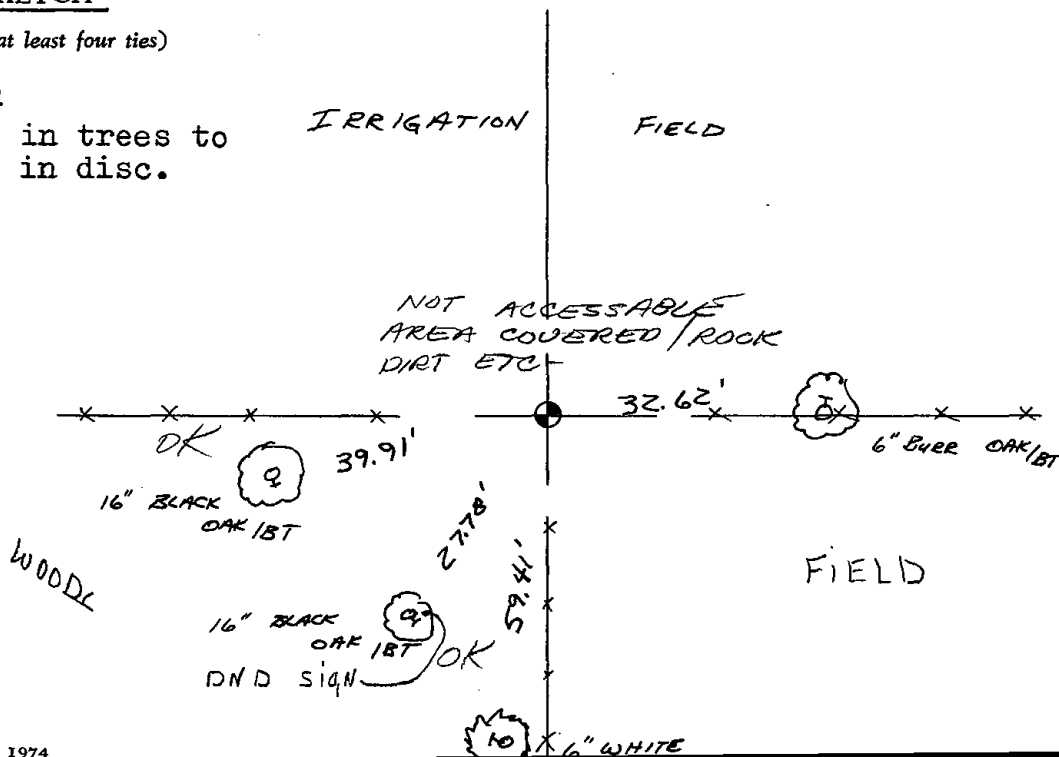
DATE: July 21, 1976

TIE SKETCH

(Show at least four ties)

NOTE

Ties in trees to nail in disc.



MAINTENANCE OF RECORD

Date	Location	Remarks
12-30-81	TH-NJ	Mon & Tues a.s.
2-3-86	GR-SS	OK
5-8-91	IG-SS	PIES OK
11-21-95	SS	" "
2-21-01	IG-MH	ALL OK
8-8-06	IG	ALL OK (CORNER SEEMS TO FALL UNDER PILE OF FIELD STONE)
5-16-11	SS	-NOT