

## PUBLIC LAND SURVEY MONUMENT RECORD

TYPE OF MONUMENT: HARRISON  
 ADAMS COUNTY COORDINATES, NAD 83 (2007)

N. 151413.057

E. 567867.666

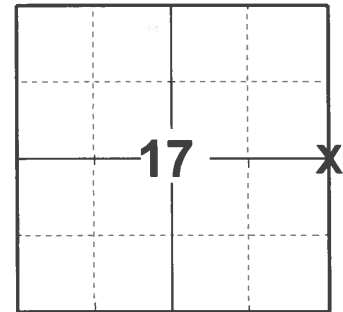
ELEVATION- \_\_\_\_\_ DATUM \_\_\_\_\_

FIELD WORK DATE: 03/31/2021

### BASIS FOR MONUMENT LOCATION

1981 - PLS 878 SET HARRISON MONUMENT FROM BEARING TREE CALLED FOR IN VOLUME 2, PAGE 135, COUNTY SURVEY RECORDS. RAY PHILLIPS, 1939, CALLED FOR 8" RED OAK N49°E, .01 LINKS. BEARING TREE STILL STANDING. FOUND 1" IRON PIPE DRIVEN TIGHT TO TREE. REPLACED PIPE WITH HARRISON MONUMENT.

2021 - PLS 2675 FOUND HARRISON MONUMENT FLUSH WITH GROUND SURFACE. DID NOT RECOVER ANY EXISTING TIES OR WITNESSES. ACCEPTED THE HARRISON MONUMENT AS THE CORNER LOCATION AND SET 4 NEW TIES.



**LOCATION**  
 (INDICATE CORNER BY "X")

SEAL:



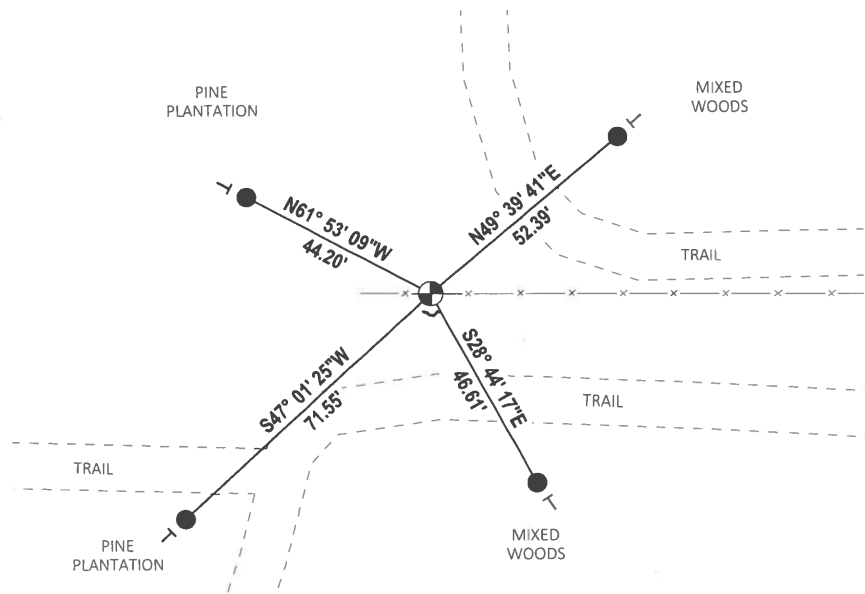
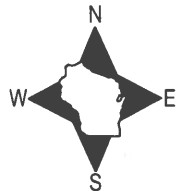
DATA SHOWN HERE ON THIS TIE SHEET IS CORRECT AND COMPLETE TO THE BEST OF MY KNOWLEDGE AND BELIEF.

PROFESSIONAL LAND SURVEYOR

DATE 5/19/21

### TIE SKETCH

NOTE: CORNER LANDS 15'± EAST OF THE END OF FENCE AND 22.5'± NORTH OF THE CENTERLINE OF THE SOUTHERN TRAIL.

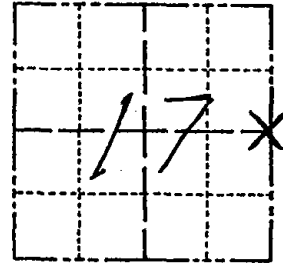


- SET 3/4" x 18" IRON REBAR, 1.50#/FT
- ⊕ FOUND HARRISON MONUMENT
- ┌ STEEL FENCE POST
- └ VINYL "T" POST

# Government Land Corner Certificate

Adams County  
 TYPE OF MONUMENT: Harrison  
 STATE PLANE COORDINATES: N \_\_\_\_\_  
 E \_\_\_\_\_  
 ELEVATION — M.S.L. DATUM: \_\_\_\_\_  
 THETA ANGLE: \_\_\_\_\_  
 FIELD BOOK: 76 PAGE 64  
 DRAWN BY: NJ

CORNER NO. 56  
 SECTION 17  
 TOWN 15  
 RANGE 7



LOCATION  
 (Indicated by 'X')

## BASIS FOR MONUMENT LOCATION

Show info such as: History of corner, with reference to Vol. and pg., dates, surveyor; exact description of monument replaced; if location computed, by taped or EDM traverse; landowner remarks, etc. (Use reverse side if necessary)

Corner set from bearing tree called for in Volume 2, Page 135, County Surveyor records. Ray Phillips, 1939, called for a 8" red oak N49 E, .01 links. Bearing tree still standing. Found a 1" iron pipe driven right against the tree. Replaced this pipe with Harrison Monument.

SEAL:



DATA SHOWN HERE ON  
 CERTIFIED CORRECT:

*Anthony B. Kiedrowski*  
 Registered Land Surveyor

DATE: 3/19/81

## TIE SKETCH

Show at least four ties, also fence lines, roads, topo, size and type of witness trees' and if off road - best way to arrive at corner.

