

16
SECTION

15
TOWN

07
RANGE

ADAMS COUNTY

COUNTY CORNER NO: 57

ROMPORTOL ID: 41507162000

PUBLIC LAND SURVEY MONUMENT RECORD

TYPE OF MONUMENT: HARRISON
ADAMS COUNTY COORDINATES, NAD 83 (2007)

N. 151396.732

E. 573098.123

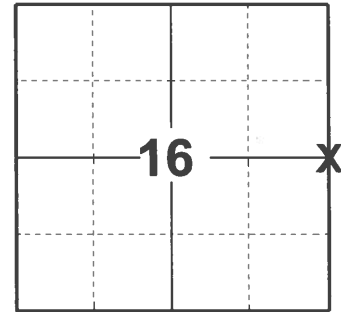
ELEVATION- _____ DATUM _____

FIELD WORK DATE: 03/11/2021

BASIS FOR MONUMENT LOCATION

1979 - PLS 1321 RAN EDM/T16 TRAVERSE OF SECTION 15 AND FOUND NO EVIDENCE OF RECORD. SET HARRISON MONUMENT ON LINE AND EQUIDISTANT BETWEEN SECTION CORNERS.

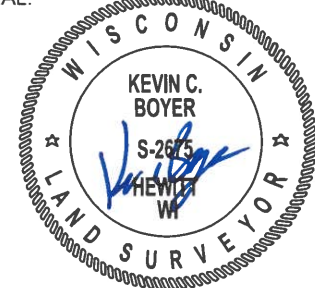
2021 - PLS 2675 FOUND HARRISON MONUMENT FLUSH WITH GROUND SURFACE AND DID NOT RECOVER ANY EVIDENCE OF EXISTING TIES OR WITNESSES. ACCEPTED HARRISON MONUMENT AS CORNER LOCATION AND SET 4 NEW TIES.



LOCATION

(INDICATE CORNER BY "X")

SEAL:



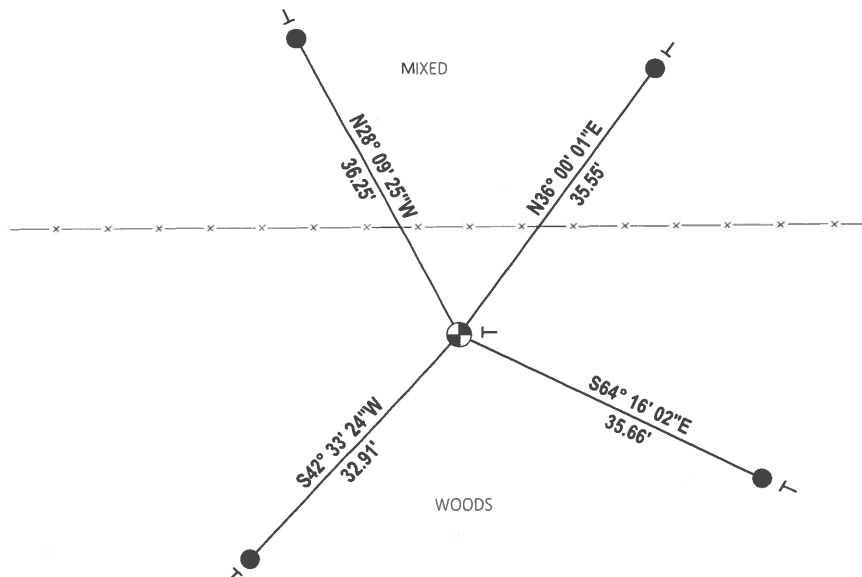
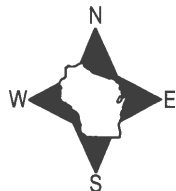
DATA SHOWN HERE ON THIS TIE SHEET IS CORRECT AND COMPLETE TO THE BEST OF MY KNOWLEDGE AND BELIEF.

PROFESSIONAL LAND SURVEYOR

DATE 5/19/21

- TIE SKETCH

NOTE: CORNER LANDS 11.6'± SOUTH OF FENCE LINE AND 200'± EAST OF 4TH AVE.

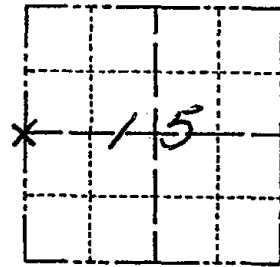


- SET 3/4" x 18" IRON REBAR, 1.50#/FT
- ⊕ FOUND HARRISON MONUMENT
- ⊣ VINYL "T" POST

Government Land Corner Certificate

Adams County
 TYPE OF MONUMENT: 30" Harrison Mon.
 STATE PLANE COORDINATES: N _____
 E _____
 ELEVATION — M.S.L. DATUM: _____
 THETA ANGLE: _____
 FIELD BOOK: _____ PAGE _____
 DRAWN BY: _____

CORNER NO. 57
 SECTION 15
 TOWN 15
 RANGE 7



LOCATION
 (Indicated by 'X')

SEAL:



BASIS FOR MONUMENT LOCATION

Show info such as: History of corner, with reference to Vol. and pg., dates, surveyor; exact description of monument replaced; if location computed, by taped or EDM traverse; landowner remarks, etc. (Use reverse side if necessary)

Ran EDM/T16 Traverse of Section 15, T15N, R7E.

Could not find any evidence of record. Set corner on line equidistant between section corners.

No excavation was made at this corner.

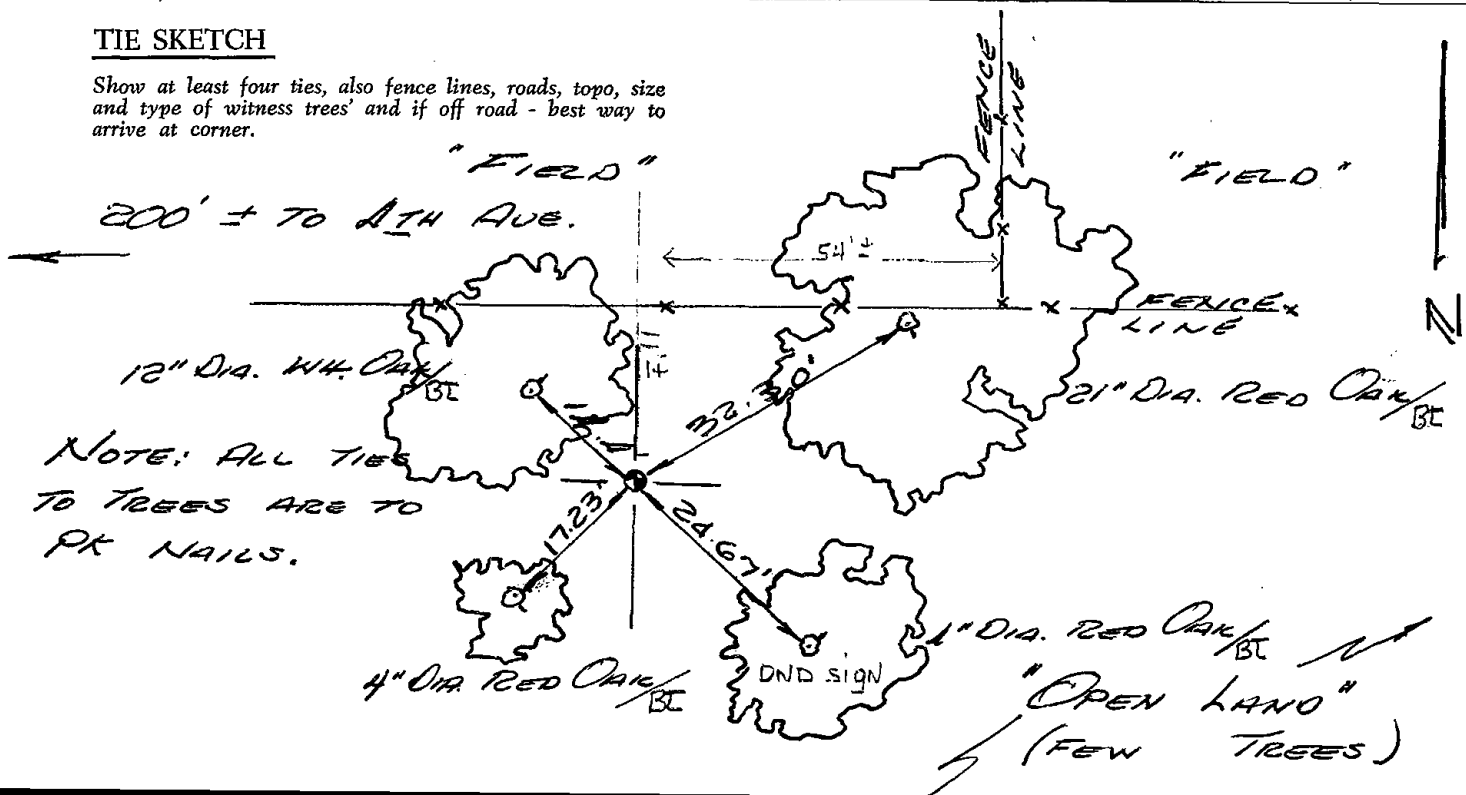
Set Harrison December 12, 1979.

DATA SHOWN HERE ON
 CERTIFIED CORRECT:

James R. Grothman
 Registered Land Surveyor
 DATE: Dec. 17, 1979

TIE SKETCH

Show at least four ties, also fence lines, roads, topo, size and type of witness trees and if off road - best way to arrive at corner.



NOTE: ALL TIES
 TO TREES ARE TO
 PK NAILS.

