

16  
SECTION

15  
TOWN

07  
RANGE

# ADAMS COUNTY

COUNTY CORNER NO: 66

ROMPORTOL ID: 41507160020

## PUBLIC LAND SURVEY MONUMENT RECORD

TYPE OF MONUMENT: HARRISON  
ADAMS COUNTY COORDINATES, NAD 83 (2007)

N. 148760.486

E. 570482.100

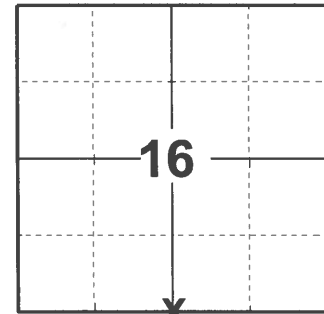
ELEVATION- \_\_\_\_\_ DATUM \_\_\_\_\_

FIELD WORK DATE: 03/31/2021

### BASIS FOR MONUMENT LOCATION

1979 - PLS 1478 SET HARRISON MONUMENT OPPOSITE FENCES AND ON LINE BETWEEN THE ADJACENT SECTION CORNERS. CORNER LOCATION MATCHED THE POSSESSION TO THE EAST AND WEST. ALSO FIT THE PROPORTION OF M.C. SMITH NOTE IN ACSR VOLUME 2 PAGE 50 VERY WELL.

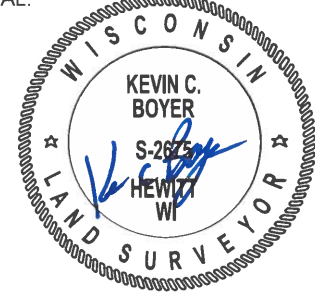
2021 - PLS 2675 FOUND HARRISON MONUMENT FLUSH WITH GROUND SURFACE. DID NOT RECOVER ANY EXISTING TIES OR WITNESSES. ACCEPTED THE HARRISON MONUMENT AS THE CORNER LOCATION AND SET 4 NEW TIES.



LOCATION

(INDICATE CORNER BY "X")

SEAL:



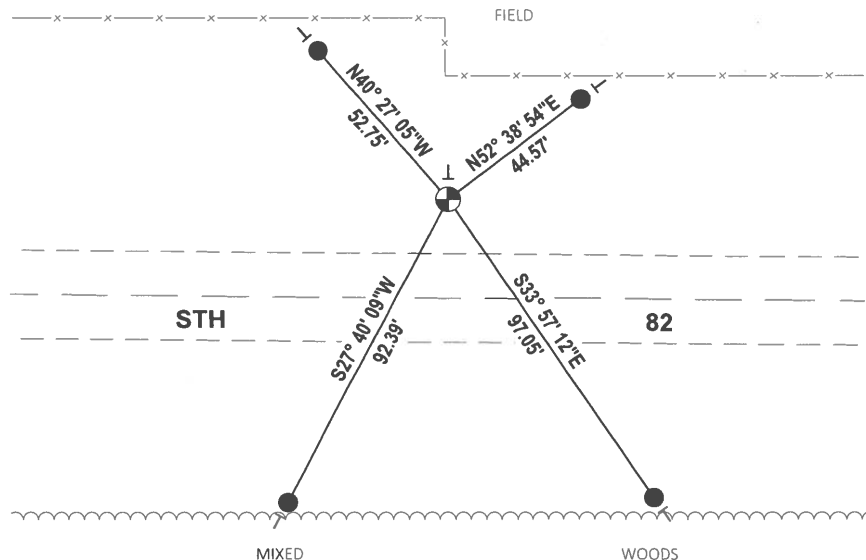
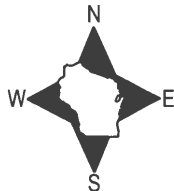
DATA SHOWN HERE ON THIS TIE SHEET IS CORRECT AND COMPLETE TO THE BEST OF MY KNOWLEDGE AND BELIEF.

PROFESSIONAL LAND SURVEYOR

DATE 5/19/21

### TIE SKETCH

NOTE: CORNER LANDS 26.6'± NORTH OF THE CENTERLINE OF STH 82.



- SET 3/4" x 18" IRON REBAR, 1.50#/FT
- ⊕ FOUND HARRISON MONUMENT
- VINYL "T" POST

# Government Land Corner Certificate

**ADAMS** County

TYPE OF MONUMENT: HARRISON

STATE PLANE COORDINATES: N \_\_\_\_\_  
E \_\_\_\_\_

ELEVATION — M.S.L. DATUM: \_\_\_\_\_

THETA ANGLE: \_\_\_\_\_

FIELD BOOK: 76 PAGE 18

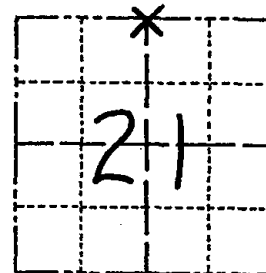
DRAWN BY: B. SULLIVAN

CORNER NO. 66

SECTION 21

TOWN 15

RANGE 7



LOCATION  
(Indicated by 'X')

## BASIS FOR MONUMENT LOCATION

Show info such as: History of corner, with reference to Vol. and pg., dates, surveyor; exact description of monument replaced; if location computed, by taped or EDM traverse; landowner remarks, etc. (Use reverse side if necessary)

Set corner opposite fences and on line between the adjacent section corners. this location matched the possession to the east and west and also fit the proportion of M.C. Smith note in ACSR Vol. 2 page 50 very well.

Excavation was not attempted at this location.

SEAL:



DATA SHOWN HERE ON  
CERTIFIED CORRECT:

*Gregory P Rhinehart*  
Registered Land Surveyor

DATE: 7/3/79

## TIE SKETCH

Show at least four ties, also fence lines, roads, topo, size and type of witness trees and if off road - best way to arrive at corner.

