

U.S. PUBLIC LAND SURVEY MONUMENT RECORD

ADAMS COUNTY



Land Surveying
 Landscape Architecture
 Engineering
Jordan G. Brost, PLS #3009
 4941 Kirschling Court
 Stevens Point, WI 54481
 715.344.9999(PH) 715.344.9922(FX)

This record shall show the location of the corner and shall include all of the following nine elements (a through i)

TYPE OF MONUMENT: BERNTSEN SURVEY MARKER NAIL

ADAMS COUNTY COORDINATES: N: 148746.406
 E: 573081.594

ELEVATION: -M.S.L. DATUM

ELLIP. HEIGHT: _____

LATITUDE: _____

LONGITUDE: _____

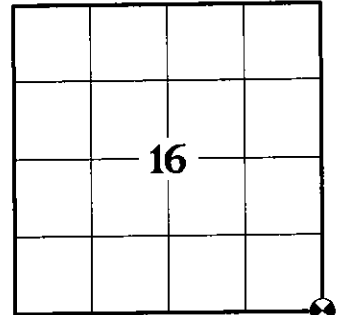
FOUND
 SET
 RE-SET
 RE-TIED

ORDER OF ACCURACY: _____
 FIRST _____
 SECOND _____
 THIRD X
 FOURTH _____
 UNKNOWN _____
 OTHER _____

REFERENCE DATUM: NAD 83 (2011)

(a) Identify the corner by reference to the U.S. public land survey system.

CORNER NO. 67
 ROMPORTOL ID: 41507160000
 SECTION 16
 TOWNSHIP 15 NORTH
 RANGE 07 EAST



SECTION IDENTIFICATION

(b) Describe any record evidence, monument evidence, occupational evidence, testimonial evidence, or any other material evidence considered by the professional land surveyor, and whether the monument was found or placed

ANTHONY B. KIEDROWSKI, PLS 878 FOUND 8 X 13 X 10" DEEP BLACK GRANITE, DUG IN STONE. STONE CALLED FOR BY M.C. SMITH, 2/52, APRIL, 1918. HE LOWERED STONE AND SET HARRISON ON TOP. PER PREVIOUS TIE SHEET DATED JUNE 13, 1979.

ERNEST WOORSTER, PLS 1741 LOCATED MONUMENT AND TIED PRIOR TO RECONSTRUCTION OF THE HIGHWAY. NEW TIES PROVIDED. TIES ARE AL. DISC SET IN CONCRETE. DISC STATES WISCONSIN DEPARTMENT OF TRANSPORTATION DO NOT DISTURB. PER PREVIOUS TIE SHEET DATED ON NOVEMBER 15, 2001.

KEVIN C. BOYER, PLS 2675 FOUND NO MONUMENT DUE TO HIGHWAY CONSTRUCTION BUT FOUND 4 TIES AND 1 WITNESS. HE CALCULATED POSITION BY DISTANCE - DISTANCE INTERSECTION FROM THE NORTHWEST, NORTHEAST, SOUTHEAST AND SOUTHWEST TIES AND AVERAGED THE SOLUTIONS. AVERAGED SOLUTION AGREES BEST WITH THE EXISTING WITNESS. HE ACCEPTED THE CALCULATED POSITION AS THE CORNER LOCATION. NO MONUMENT WAS SET AT THE TIME OF SURVEY. PER PREVIOUS TIE SHEET DATED MAY 19, 2021.

ON JULY 22, 2020, I FOUND HARRISON MONUMENT AT THE CORNER LOCATION AND FOUR EXISTING WITNESS MONUMENTS AS SHOWN ON PREVIOUS TIE SHEET BY E. WOORSTER DATED NOV. 1, 2015. EXISTING MONUMENT CHECKED WELL WITH WITNESS MONUMENTS AND WAS ACCEPTED AS THE CORNER LOCATION. MONUMENT AND WITNESSES WERE TIED BEFORE RECONSTRUCTION OF STATE HWY "82".

ON MAY 20, 2021, AFTER CONSTRUCTION WAS COMPLETE, I SET A BERNTSEN SURVEY NAIL IN CONCRETE AT THE PREVIOUS SURVEYED LOCATION AND VERIFIED WITNESS MONUMENTS AS PREVIOUSLY FOUND, WHICH WERE IN GOOD CONDITION.

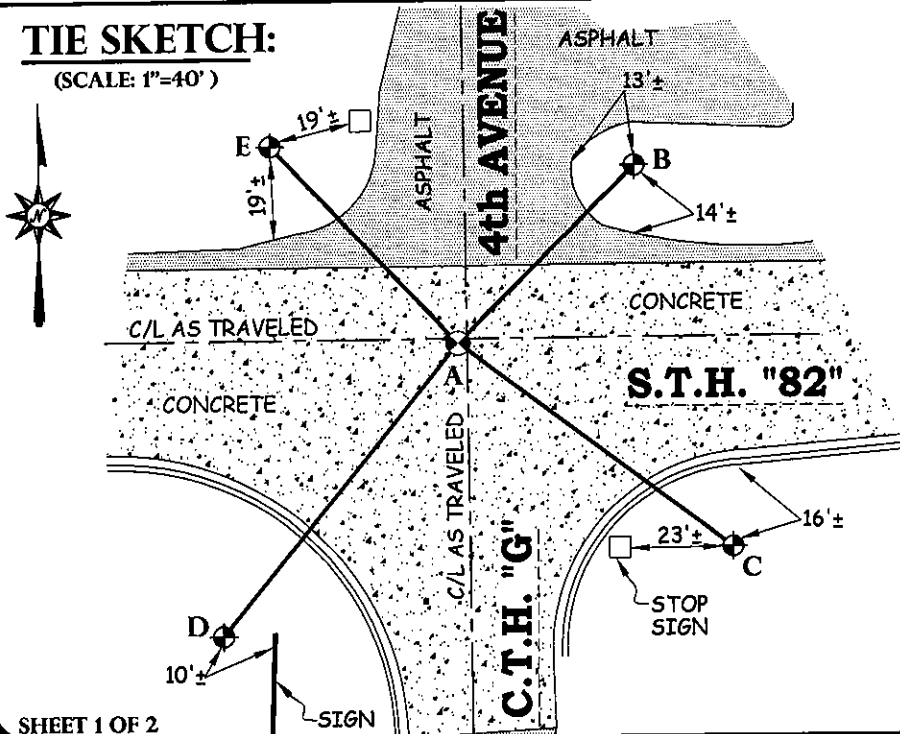
(c) In the plan view drawing below, provide reference ties to at least 4 witness monuments. Witness monuments shall be concrete, natural stone, iron, bearing trees or other equally durable material, except wood other than bearing trees.

(d) Show a plan view drawing depicting the relevant monuments and reference ties which is sufficient in detail to enable accurate relocation of the corner monument if the corner monument is disturbed.

DRAFTED BY JORDAN G. BROST
 DRAWN BY TRAVIS PLANTICO

TIE SKETCH:

(SCALE: 1"=40')



LEGEND AND NOTES:

- SET BERNTSEN SURVEY MARKER NAIL
- DOT ALUMINUM CAP MONUMENT IN CONCRETE FOUND

A-B	(N 44°56'53" E)	(52.26')
	N 44°52'51"E	52.03'
A-C	(S 53°21'47" E)	(71.53')
	S 53°07'30"E	71.43'
A-D	(S 38°34'12" W)	(77.98')
	S 38°37'22"W	78.30'
A-E	(N 43°06'14" W)	(56.68')
	N 43°22'39"W	56.76'

COORDINATES ARE REFERENCED TO THE ADAMS COUNTY COORDINATE SYSTEM AS DEVELOPED BY THE WISCONSIN DEPARTMENT OF TRANSPORTATION.

U.S. PUBLIC LAND SURVEY MONUMENT RECORD
ADAMS COUNTY



Land Surveying
Landscape Architecture
Engineering
Jordan G. Brost, PLS #3009
4941 Kirschling Court
Stevens Point, WI 54481
715.344.9999(Ph) 715.344.9922(Fx)

(e) A description of any material discrepancy between the location of the corner monument as restored and the monument location of that corner as previously established.

(a) Identify the corner by reference to the U.S. public land survey system.

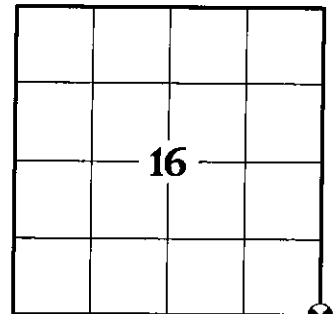
CORNER NO. 67
ROMPORTOL ID: 41507160000
SECTION 16
TOWNSHIP 15 NORTH
RANGE 07 EAST

(f) Was the corner restored through acceptance of (1) an obliterated evidence location, or (2) a found perpetuated location.

FOUND PERPETUATED LOCATION

(g & h) Was the corner reestablished through lost corner proportionate methods? If so, show the method, including the directions and distances to other public land survey corners used as evidence or used for proportioning in determining the corner location.

NO

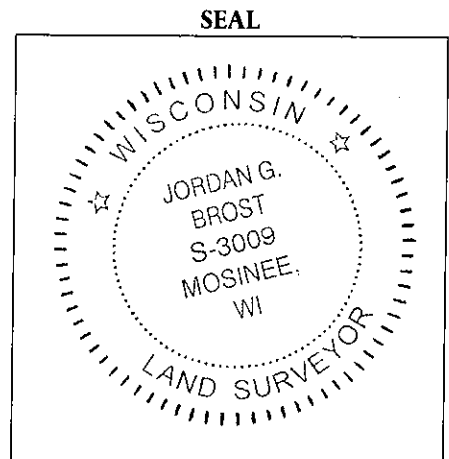


SECTION IDENTIFICATION

(i) I, Jordan G. Brost, hereby certify that the corner location shown on this record was determined by me or under my direction and control and that this U.S. Public Land Survey Monument Record is correct and complete to the best of my knowledge and belief.


Jordan G. Brost, PLS # 3009

Oct. 11, 2021
Date



PUBLIC LAND SURVEY MONUMENT RECORD

TYPE OF MONUMENT: CALCULATED POSITION

ADAMS COUNTY COORDINATES, NAD 83 (2007)

N. 148746.216

E. 573081.257

ELEVATION- _____ DATUM _____

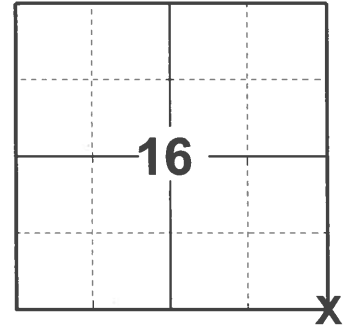
FIELD WORK DATE: 03/11/2021

BASIS FOR MONUMENT LOCATION

1979 - PLS 878 EXCAVATED AREA WITH BACKHOE. FOUND 8" X 13" X 10" BLACK GRANITE DUG IN STONE CALLED FOR BY M.C. SMITH, 2/52, APRIL 1918. LOWERED STONE AND SET HARRISON ON TOP.

2001 - PLS 1741 FOUND HARRISON MONUMENT AND SET 4 TIES PRIOR TO HIGHWAY CONSTRUCTION.

2021 - PLS 2675 FOUND NO MONUMENT DUE TO HIGHWAY CONSTRUCTION BUT FOUND 4 TIES AND 1 WITNESS. CALCULATED POSITION BY DISTANCE - DISTANCE INTERSECTION FROM THE NORTHWEST, NORTHEAST, SOUTHEAST AND SOUTHWEST TIES AND AVERAGED THE SOLUTIONS. AVERAGED SOLUTION AGREES BEST WITH THE EXISTING WITNESS. ACCEPTED THE CALCULATED POSITION AS THE CORNER LOCATION. NO MONUMENT WAS SET AT THE TIME OF SURVEY.



LOCATION

(INDICATE CORNER BY "X")

SEAL:



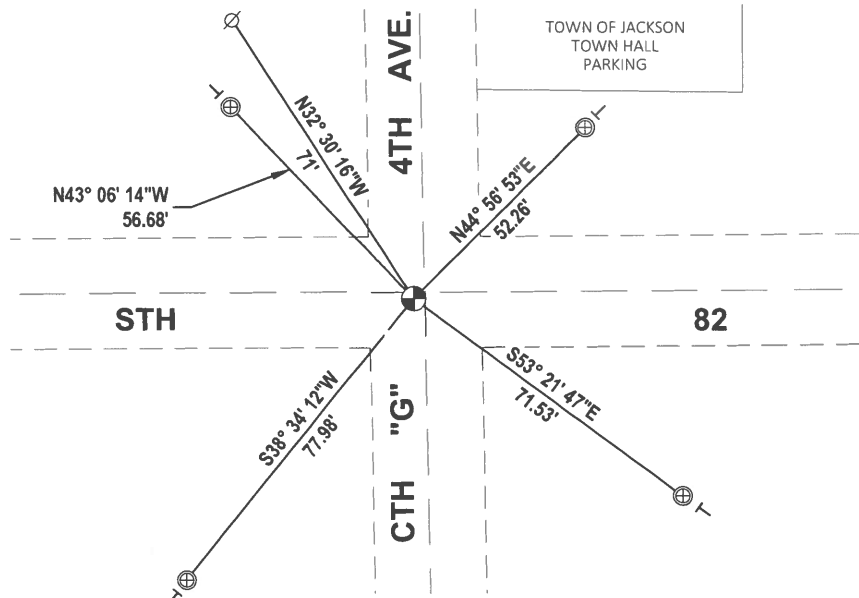
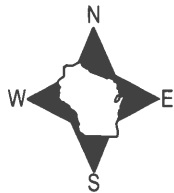
DATA SHOWN HERE ON THIS TIE SHEET IS CORRECT AND COMPLETE TO THE BEST OF MY KNOWLEDGE AND BELIEF.

PROFESSIONAL LAND SURVEYOR

DATE 5/19/21

TIE SKETCH

NOTE: CORNER LANDS 1.4± SOUTH OF THE CENTERLINE OF STH 82 AND 2.4± WEST OF THE CENTERLINE OF 4TH AVE.

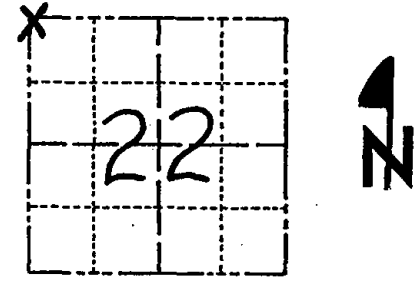


- ⊕ FOUND WISDOT ALUMINUM CAP IN CONCRETE
- ⊕ CALCULATED CORNER POSITION
- ⊕ WITNESS POWER POLE
- ⊖ VINYL "T" POST

Government Land Corner Certificate

ADAMS County
 TYPE OF MONUMENT: **HARRISON**
 STATE PLANE COORDINATES: N _____
 E _____
 ELEVATION — M.S.L. DATUM: _____
 THETA ANGLE: _____
 FIELD BOOK: **(102) 78** PAGE **1** (25)
 DRAWN BY: **B. SULLIVAN**

CORNER NO. **67**
 SECTION **22**
 TOWN **15**
 RANGE **7**



LOCATION
 (Indicated by 'X')

BASIS FOR MONUMENT LOCATION

Show info such as: History of corner, with reference to Vol. and pg., dates, surveyor; exact description of monument replaced; if location computed, by taped or EDM traverse; landowner remarks, etc. (Use reverse side if necessary)

Excavated with backhoe. Found 8 x 13 x 10" deep Black granite, dug in stone. Stone called for by M.C. Smith, 2/52, April, 1918. Lowered stone and set Harrison on top.

SEAL:



DATA SHOWN HERE ON
 CERTIFIED CORRECT:

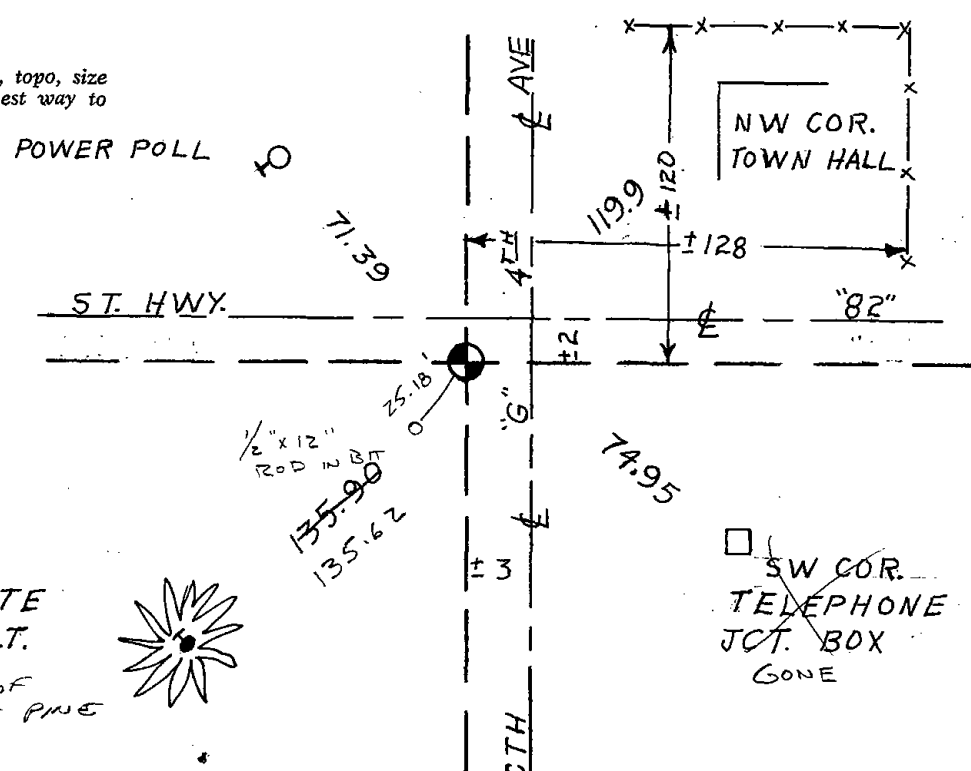
Anthony B. Kiedrowski
 Registered Land Surveyor

DATE: 6/13/79

SEE TIE SHEET WOODSTER 15 NOV. 01

TIE SKETCH

Show at least four ties, also fence lines, roads, topo, size and type of witness trees and if off road - best way to arrive at corner.



No Good MADE
 NEW 12" W. PINE BT
 11-20-91 K2

12" WHITE PINE B.T.
 STAMP
 5' S.E. OF
 10" WHITE PINE



Government Land Corner Certificate

ADAMS County

TYPE OF MONUMENT HARRISON

STATE PLANE COORDINATES: N. _____
E. _____

ELEVATION _____ M.S.L. DATUM: _____

THETA ANGLE: _____

FIELD BOOK: _____ PAGE: _____

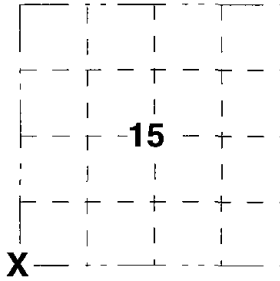
DRAWN BY: E.W.

CORNER NO. _____

SECTION 15

TOWN T15N

RANGE R7E



BASIS FOR MONUMENT LOCATION

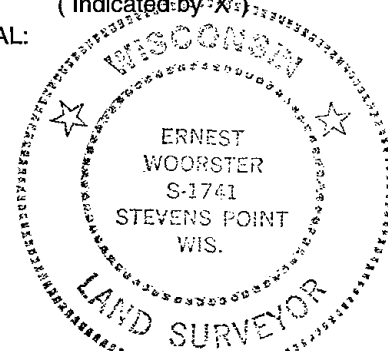
Show info such as; History of corner, with reference to Vol. and pg., dates, surveyor, exact description of monument replaced; if location computed by taped or EDM traverse; landowner remarks, etc. (use reverse side if necessary).

MONUMENT LOCATED AND TIED PRIOR TO RECONSTRUCTION OF THE HIGHWAY. NEW TIES PROVIDED. TIES ARE AL. DISC SET IN CONCRETE. DISC STATES WISCONSIN DEPARTMENT OF TRANSPORTATION DO NOT DISTURB.

ALL OK, 5-11-06 - JG
OK 2-18-11 SS

LOCATION
(Indicated by 'X')

SEAL:



DATA SHOWN HERE ON
CERTIFIED CORRECT:

[Handwritten Signature]

Registered Land Surveyor

DATE 15 Nov 01

TIE SKETCH

Show at least four ties; also fence lines, roads, topo, size and type of witness trees' and if off road- best way to arrive at corner.

