

PUBLIC LAND SURVEY MONUMENT RECORD

TYPE OF MONUMENT: HARRISON
 ADAMS COUNTY COORDINATES, NAD 83 (2007)

N. 148790.363

E. 578304.502

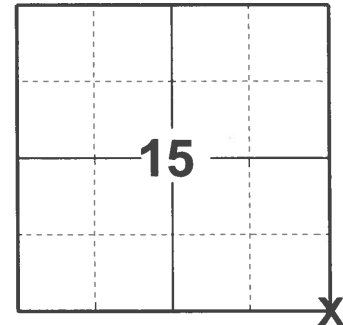
ELEVATION- _____ DATUM _____

FIELD WORK DATE: 03/11/2021

BASIS FOR MONUMENT LOCATION

1975 - PLS 1101 FOUND 2" FLANGED PIPE ESTABLISHED IN 1966 BY PLS 742 REFERENCING CHUCK CONNELL SURVEY. PROJECT NUMBER 1871, F.B. 336, PAGE 23 FILE NUMBER 22-68-5.

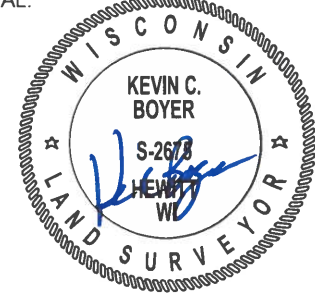
2021 - PLS 2675 FOUND HARRISON MONUMENT 6" BELOW GROUND SURFACE. DID NOT RECOVER ANY EXISTING TIES. ACCEPTED HARRISON MONUMENT AS CORNER LOCATION AND SET 4 NEW TIES.



LOCATION

(INDICATE CORNER BY "X")

SEAL:



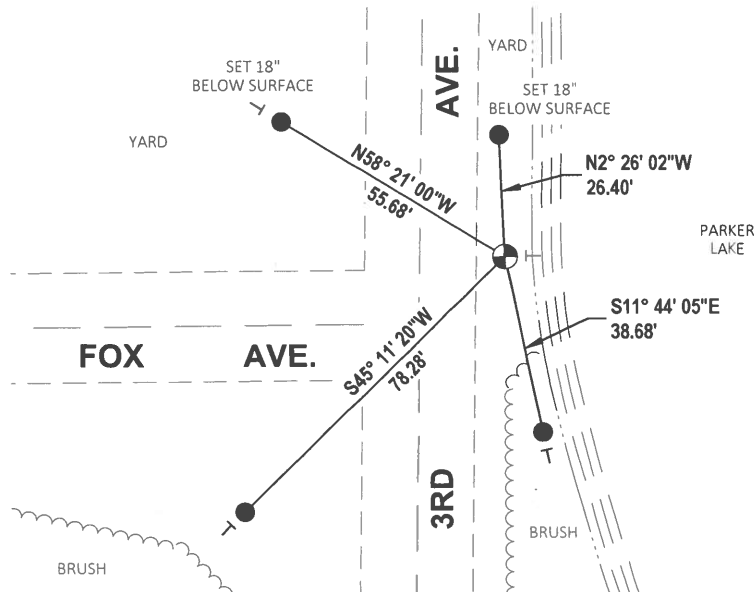
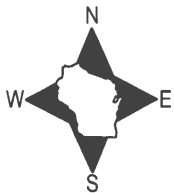
DATA SHOWN HERE ON THIS TIE SHEET IS CORRECT AND COMPLETE TO THE BEST OF MY KNOWLEDGE AND BELIEF.

PROFESSIONAL LAND SURVEYOR

DATE 5/19/21

TIE SKETCH

NOTE: CORNER LANDS 18± EAST OF 3RD AVE. CENTERLINE AND NORTH 14± OF FOX AVE. CENTERLINE.



- SET 3/4" x 18" IRON REBAR, 1.50#/FT
- ⊕ FOUND HARRISON MONUMENT
- VINYL "T" POST

ADAMS COUNTY

Survey Monument Record *Set Harrison 5-7-75*

TYPE OF MONUMENT: 2" DIA. FLANGED PIPE

STATE PLANE COORDINATES: N _____

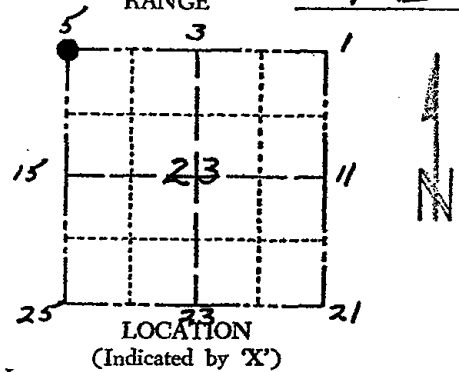
E _____

ELEVATION — M.S.L. DATUM: _____

THETA ANGLE: _____

FIELD BOOK: 454 PAGE 70

CORNER NO. 599
SECTION 23
TOWN 15 N
RANGE 7 E



BASIS FOR MONUMENT LOCATION

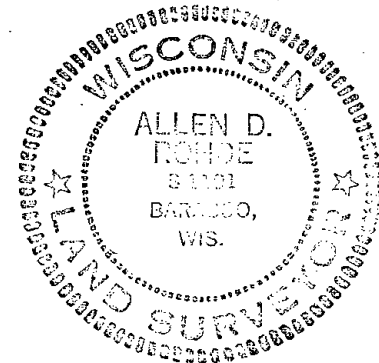
(Use reverse side if necessary)

Show info such as: History of corner, with reference to Vol. and pg, dates, surveyor; exact description of monument replaced; if location computed, by taped or EDM traverse; landowner remarks, etc.

*Fd EXISTING 2" Dia Flanged Pipe
Corner Establish Feb 11, 1966
by Ken Carlson 500742
REF. Chuck Connell Survey
PROJ. No. 1871, F.B. 336, P. 23
File No. 22-68-5
All distances Taped*

Corner ties O.K. 10-22-75 RN-SS

SEAL:



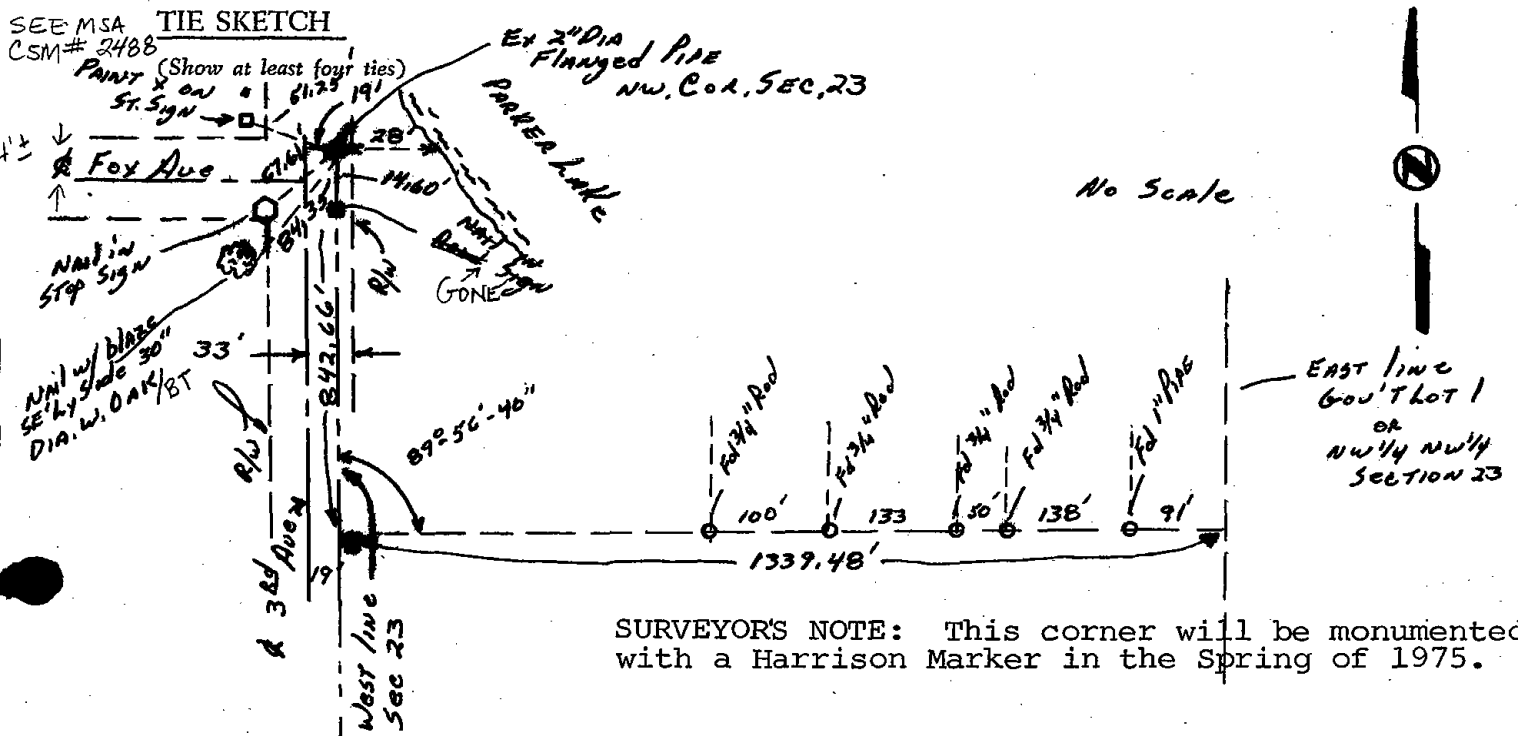
CERTIFIED CORRECT:

Allen Rohde

Registered Land Surveyor

DATE: 1-6-75

TIE SKETCH



SURVEYOR'S NOTE: This corner will be monumented with a Harrison Marker in the Spring of 1975.

MAINTENANCE RECORD

Date	Init	Remarks
12-28-81	TH-MJ	HARRISON IN PLACE
2-3-86	GR-SS	" "
3-26-91	EG	1-GONE CORNER OK
2-26-01	JG	OK, CHECK FOR SURVEYS

U.S. PUBLIC LAND SURVEY MONUMENT RECORD

ADAMS COUNTY

TYPE OF MONUMENT: HARRISON MONUMENT

STATE PLANE COORDINATES: N _____

E _____

ELEVATION — M.S.L. DATUM: _____

THETA ANGLE: _____

FIELD BOOK: _____ PAGE _____

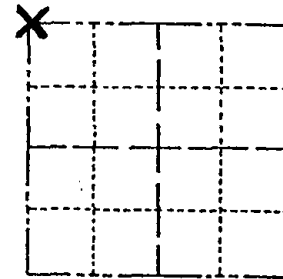
DRAWN BY: _____

CORNER NO. _____

SECTION 23

TOWN 15

RANGE 7



LOCATION
(Indicated by 'X')

BASIS FOR MONUMENT LOCATION

Show info such as: History of corner, with reference to Vol. and pg., dates, surveyor; exact description of monument replaced; if location computed, by taped or EDM traverse; landowner remarks, etc. (Use reverse side if necessary) (in conformance with Section A-E 502 of the Wisconsin Administrative Code)

SEAL: _____

This tie sheet updates tie sheet of 01-06-75 by Allen Rhode

DATA SHOWN HERE ON CERTIFIED CORRECT:

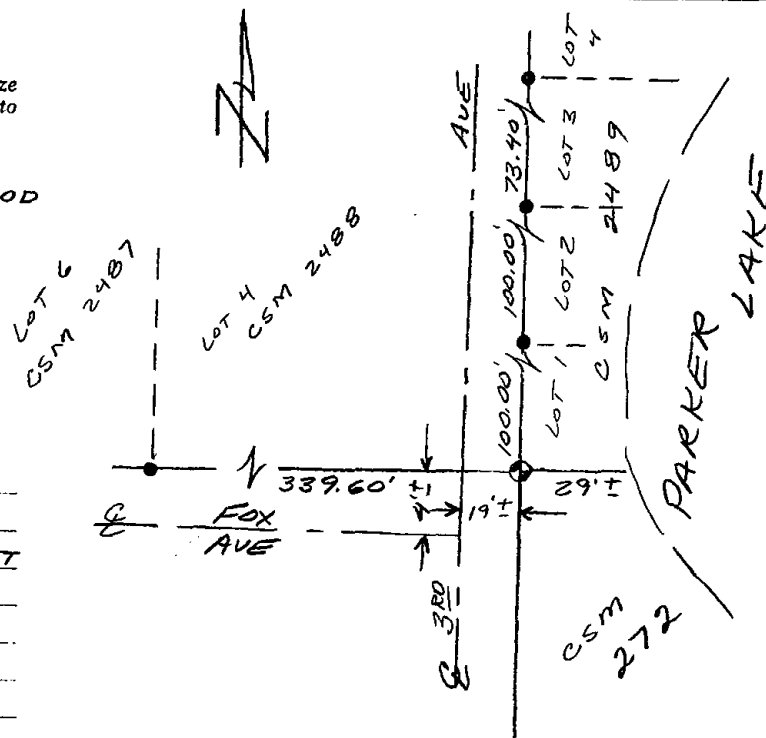
Registered Land Surveyor

DATE: _____

TIE SKETCH

Show at least four ties, also fence lines, roads, topo, size and type of witness trees and if off road - best way to arrive at corner.

● = 3/4" IRON ROD



MAINTENANCE RECORD

Date	Init.	Remarks
3-27-06	SS	UPDATED TIE SHEET
2-18-11	SS	OK