

14  
SECTION

15  
TOWN

07  
RANGE

# ADAMS COUNTY

COUNTY CORNER NO.: 71

ROMPORTOL ID: 41507140000

## PUBLIC LAND SURVEY MONUMENT RECORD

TYPE OF MONUMENT: HARRISON  
ADAMS COUNTY COORDINATES, NAD 83 (2007)

N. 148797.745

E. 583648.846

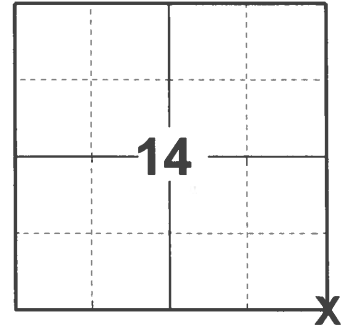
ELEVATION- - - - - DATUM - - - - -

FIELD WORK DATE: 03/10/2021

### BASIS FOR MONUMENT LOCATION

1974 - PLS 417 USED EAST WEST FENCE LINES AND RAN TRAVERSE OF SECTIONS 12 AND 13 TO DETERMINE SEARCH AREA. FOUND RAILROAD SPIKE IN THE CENTER OF 2ND AVE AND REPLACED WITH HARRISON MONUMENT.

2021 - PLS 2675 FOUND HARRISON MONUMENT 6" BELOW THE ROAD SURFACE AND 2 TIES. THE MONUMENT AGREES WITH BOTH TIES. ACCEPTED THE HARRISON MONUMENT AS THE CORNER LOCATION. SET 3 NEW TIES AND MEASURED TO THE EXISTING TIES.



LOCATION

(INDICATE CORNER BY "X")

SEAL:



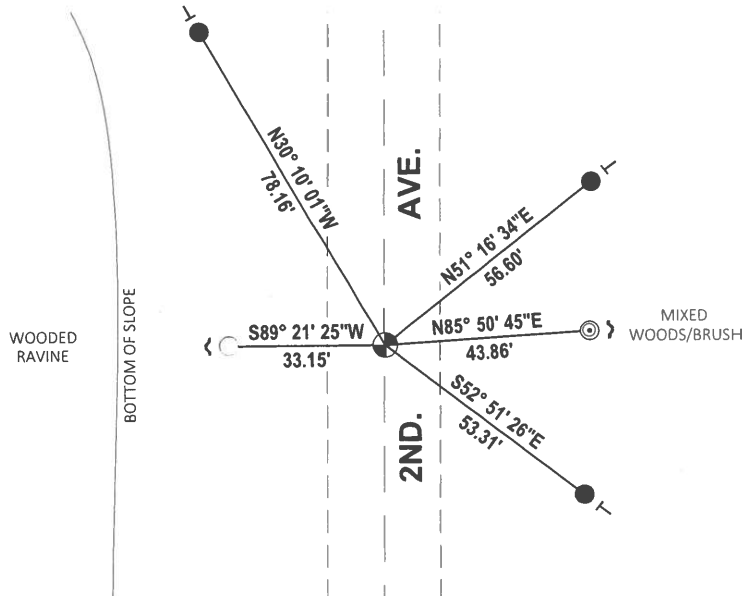
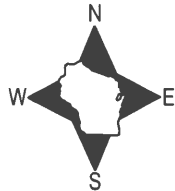
DATA SHOWN HERE ON THIS TIE SHEET IS CORRECT AND COMPLETE TO THE BEST OF MY KNOWLEDGE AND BELIEF.

PROFESSIONAL LAND SURVEYOR

DATE 5/19/21

### - TIE SKETCH

NOTE: CORNER LANDS ON THE CENTERLINE OF 2ND AVE.



- SET 3/4" x 18" IRON REBAR, 1.50#/FT
- FOUND 3/4" IRON ROD
- ◎ FOUND 2-3/8" O.D. IRON PIPE
- ⊕ FOUND HARRISON MONUMENT
- ↘ STEEL FENCE POST
- ┊ VINYL "T" POST

ADAMS COUNTY

Survey Monument Record

TYPE OF MONUMENT: HARRISON

STATE PLANE COORDINATES: N \_\_\_\_\_  
E \_\_\_\_\_

ELEVATION — M.S.L. DATUM: \_\_\_\_\_

THETA ANGLE: \_\_\_\_\_

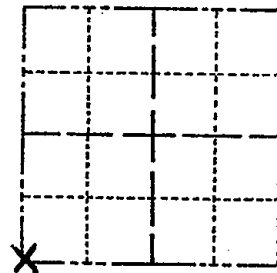
FIELD BOOK: Clip sheets PAGE \_\_\_\_\_

CORNER NO. 353 <sup>(71)</sup>

SECTION 13

TOWN 15N

RANGE 7E



LOCATION  
(Indicated by 'X')

SEAL:

BASIS FOR MONUMENT LOCATION

(Use reverse side if necessary)

Show info such as: History of corner, with reference to Vol. and pg, dates, surveyor; exact description of monument replaced; if location computed, by taped or EDM traverse; landowner remarks, etc.

Location determined by computed coordinates from an extensive traverse connecting all of Sections 12-13. Existing East-West fence lines. R.R. Spike found in center of 2nd Ave. - replaced with Harrison Monument. No probing due to large amount of fill in road.

CORNER O.K. 10-28-76 PN-SS



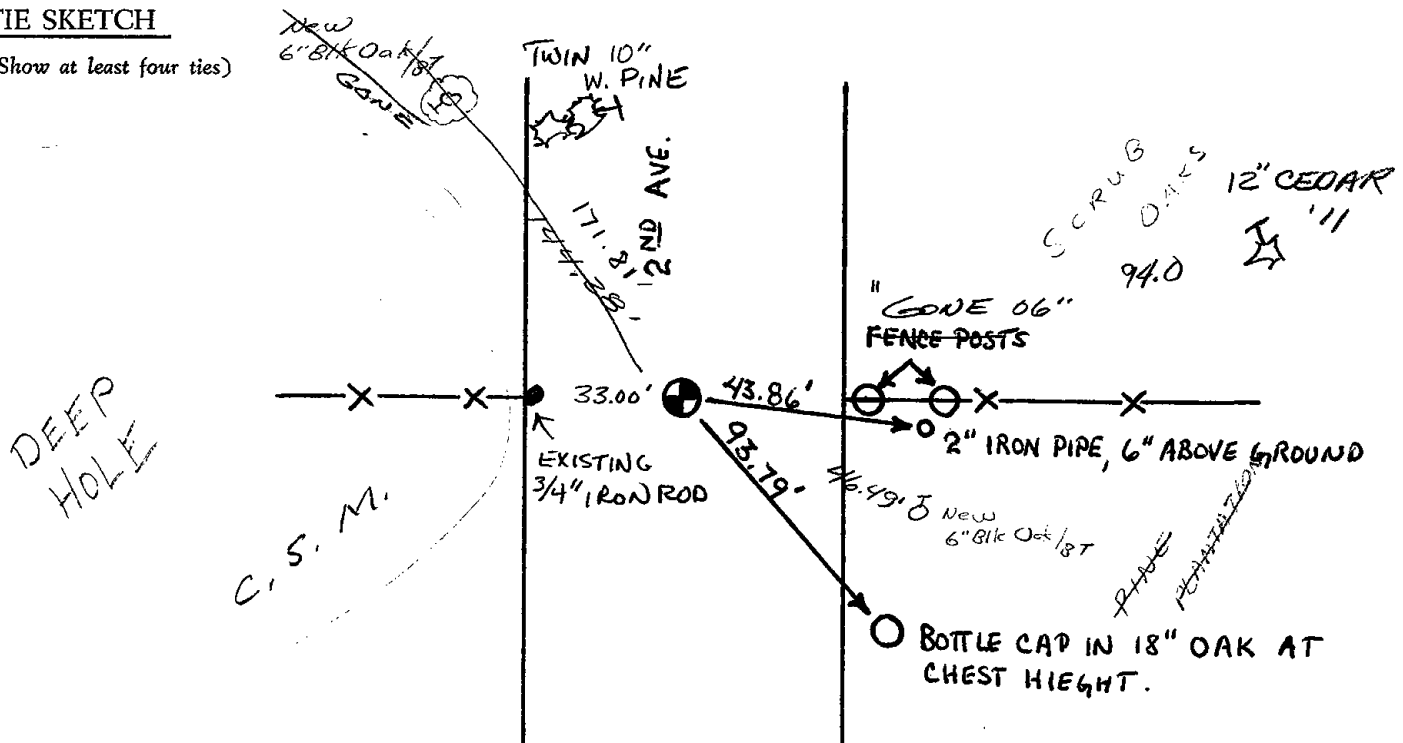
CERTIFIED CORRECT:

R. K. Saylor  
Registered Land Surveyor

DATE: 1/15/74

TIE SKETCH

(Show at least four ties)



MAINTENANCE RECORD

Date	init.	Remarks
12-30-81	TH-NJ	MON + TIES O.K
2-3-86	GR-SS	" " "
5-8-91	JG-SS	" " "
2-12-96	SS	OK
2-28-01	JG	OK
3-29-06	KPR	2-NEW TIES
2-18-11	SS	1 " "